



Chipsmall Limited consists of a professional team with an average of over 10 year of expertise in the distribution of electronic components. Based in Hongkong, we have already established firm and mutual-benefit business relationships with customers from,Europe,America and south Asia,supplying obsolete and hard-to-find components to meet their specific needs.

With the principle of "Quality Parts,Customers Priority,Honest Operation,and Considerate Service",our business mainly focus on the distribution of electronic components. Line cards we deal with include Microchip,ALPS,ROHM,Xilinx,Pulse,ON,Everlight and Freescale. Main products comprise IC,Modules,Potentiometer,IC Socket,Relay,Connector.Our parts cover such applications as commercial,industrial, and automotives areas.

We are looking forward to setting up business relationship with you and hope to provide you with the best service and solution. Let us make a better world for our industry!



Contact us

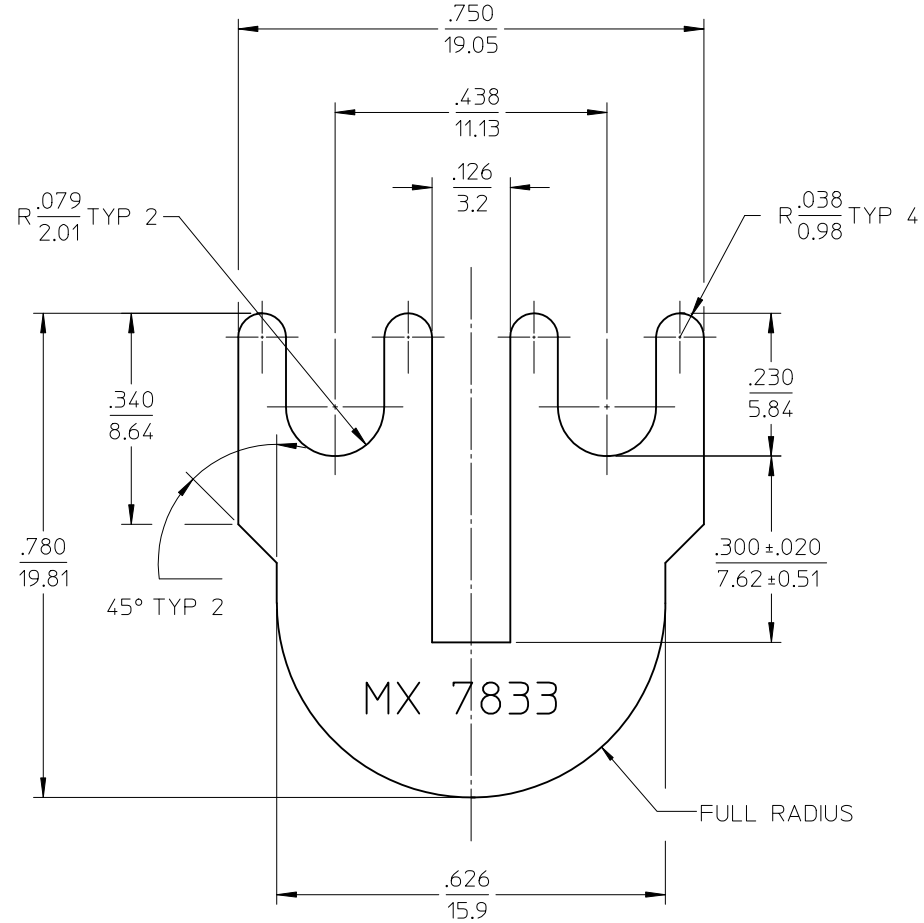
Tel: +86-755-8981 8866 Fax: +86-755-8427 6832

Email & Skype: info@chipsmall.com Web: www.chipsmall.com

Address: A1208, Overseas Decoration Building, #122 Zhenhua RD., Futian, Shenzhen, China



MATERIAL NO.	ENGINEERING NO.
380021478	7833



NOTE:

1. MATERIAL: 70/30 BRASS (.032/.81 THICK)
2. FINISH: NICKEL PLATING
3. IMPRINT CHARACTERS .050 HIGH LOCATED APPROXIMATELY AS SHOWN



MX TEXT WAS BEAU EC NO: WNA2012-0105 DRWN:RSTONE 2011/08/17 CHKDB:RUPERT 2011/08/18 APPR:JFURPHY 2012/01/12 REV B	QUALITY SYMBOLS	GENERAL TOLERANCES (UNLESS SPECIFIED)	DIMENSION STYLE	SCALE	DESIGN UNITS	THIRD ANGLE PROJECTION	
	▼=0 ▽=0	mm INCH 4 PLACES ± --- ± --- 3 PLACES ± --- ± .005 2 PLACES ± 0.13 ± .01 1 PLACE ± 0.25 ± --- ANGULAR ± 2°	IN/MM	1:1	INCH		
			DRAWN BY	DATE	TITLE		
			CYORK	06/02/15	TERMINAL JUMPER, EDGE ON		
			CHECKED BY	DATE			
			ASAYDEH	06/02/16			
			APPROVED BY	DATE			
			RDEROSS	06/02/16			
			MATERIAL NO.	DOCUMENT NO.			
			SEE CHART	SD-38002-041			
			SIZE B	THIS DRAWING CONTAINS INFORMATION THAT IS PROPRIETARY TO MOLEX INCORPORATED AND SHOULD NOT BE USED WITHOUT WRITTEN PERMISSION			