



Chipsmall Limited consists of a professional team with an average of over 10 year of expertise in the distribution of electronic components. Based in Hongkong, we have already established firm and mutual-benefit business relationships with customers from,Europe,America and south Asia,supplying obsolete and hard-to-find components to meet their specific needs.

With the principle of “Quality Parts,Customers Priority,Honest Operation,and Considerate Service”,our business mainly focus on the distribution of electronic components. Line cards we deal with include Microchip,ALPS,ROHM,Xilinx,Pulse,ON,Everlight and Freescale. Main products comprise IC,Modules,Potentiometer,IC Socket,Relay,Connector.Our parts cover such applications as commercial,industrial, and automotives areas.

We are looking forward to setting up business relationship with you and hope to provide you with the best service and solution. Let us make a better world for our industry!



## Contact us

Tel: +86-755-8981 8866 Fax: +86-755-8427 6832

Email & Skype: info@chipsmall.com Web: www.chipsmall.com

Address: A1208, Overseas Decoration Building, #122 Zhenhua RD., Futian, Shenzhen, China



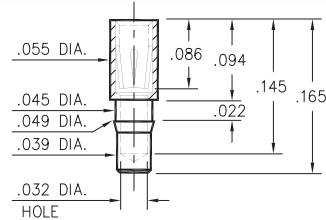
# PIN RECEPTACLES

FOR .015" - .025" DIAMETER PINS

## 0385

0385-0-15-XX-43-XX-10-0

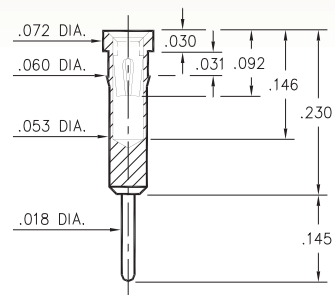
Press-fit in .046 mounting hole



## 4001

4001-0-15-XX-43-XX-04-0

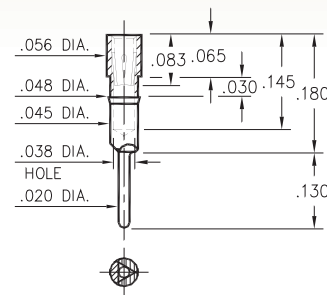
Press-fit in .057 mounting hole



## 1782

1782-0-15-XX-43-XX-04-0

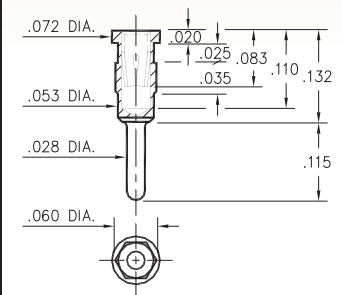
Press-fit in .045 mounting hole



## 5960

5960-0-15-XX-43-XX-04-0

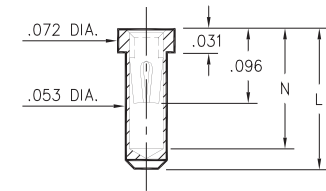
Hex press-fit in .057 plated through-hole



## 1401/3185

XXXX-0-15-XX-30-XX-10-0

Solder mount in .055 min. mounting hole  
Also available on 16mm wide carrier tape:  
1,700 parts per 13" reel  
Order as: XXXX-0-57-XX-30-XX-10-0

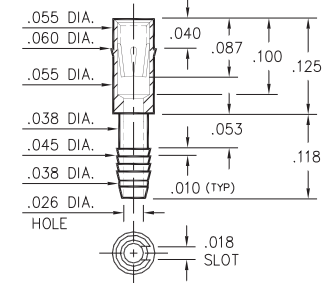


Basic Part Number	Length L	Depth N
1401-0	.165	.145
3185-0	.130	.109

## 4310

4310-0-31-XX-43-XX-04-0

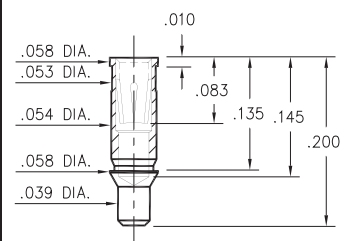
Compliant press-fit in .040 ± .003 plated through-hole. For .090" → .130" thick board



## 1385

1385-0-15-XX-43-XX-10-0

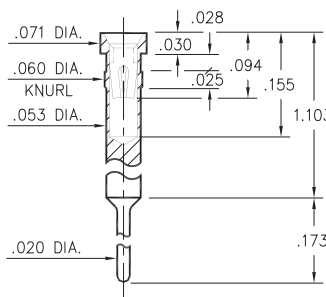
Surface mount



## 3018

3018-0-15-XX-30-XX-04-0

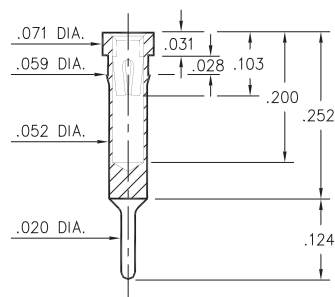
Press-fit in .057 mounting hole



## 8852

8852-0-15-XX-30-XX-04-0

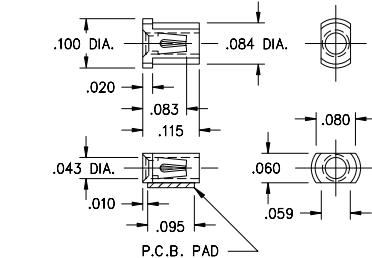
Press-fit in .056 mounting hole



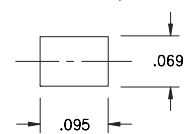
## 3907

3907-0-18-XX-30-XX-10-0

Surface mount  
Also available on 12mm wide carrier tape:  
4,000 parts per 13" reel  
Order as: 3907-0-58-XX-30-XX-10-0



P.C.B. Layout



### SPECIFICATIONS:

Shell Material: Brass Alloy 360, 1/2 Hard

Contact Material: Beryllium Copper Alloy 172, HT

Dimensions: Inches

Tolerances On: Lengths: ±.005

Diameters: ±.002

Angles: ± 2°



ORDER CODE: XXXX - X - XX - XX - XX - XX - XX - 0

BASIC PART #

SPECIFY SHELL FINISH:

- 01 200 μ" TIN/LEAD OVER NICKEL
- ◆ 80 200 μ" TIN OVER NICKEL (RoHS)
- ◆ 15 10 μ" GOLD OVER NICKEL (RoHS)

SPECIFY CONTACT FINISH:

- 02 100 μ" TIN/LEAD OVER NICKEL
- ◆ 84 100 μ" TIN OVER NICKEL (RoHS)
- ◆ 27 30 μ" GOLD OVER NICKEL (RoHS)

SELECT CONTACT:

#30, #35 or #43 CONTACT (DATA ON PAGE 253 & 254)  
(For alternate contact choices, see groups B and C on page 248)

