



Chipsmall Limited consists of a professional team with an average of over 10 year of expertise in the distribution of electronic components. Based in Hongkong, we have already established firm and mutual-benefit business relationships with customers from,Europe,America and south Asia,supplying obsolete and hard-to-find components to meet their specific needs.

With the principle of "Quality Parts,Customers Priority,Honest Operation,and Considerate Service",our business mainly focus on the distribution of electronic components. Line cards we deal with include Microchip,ALPS,ROHM,Xilinx,Pulse,ON,Everlight and Freescale. Main products comprise IC,Modules,Potentiometer,IC Socket,Relay,Connector.Our parts cover such applications as commercial,industrial, and automotives areas.

We are looking forward to setting up business relationship with you and hope to provide you with the best service and solution. Let us make a better world for our industry!



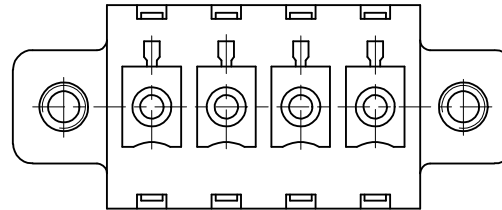
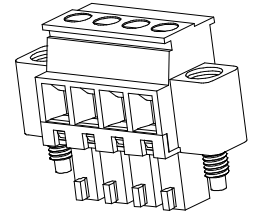
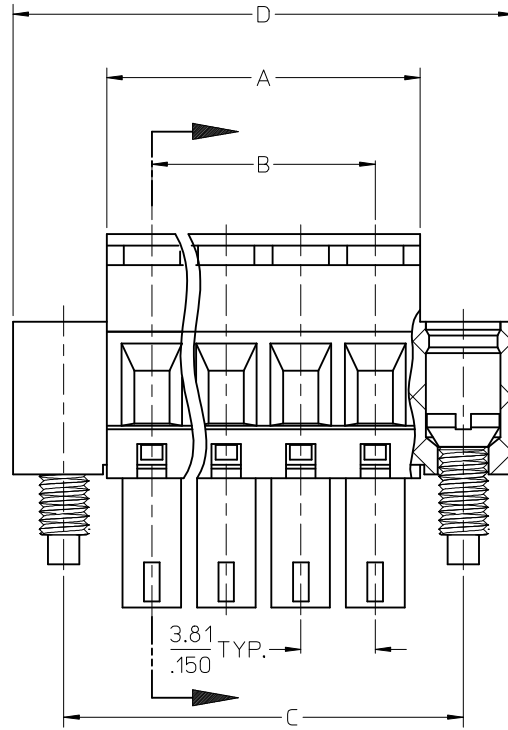
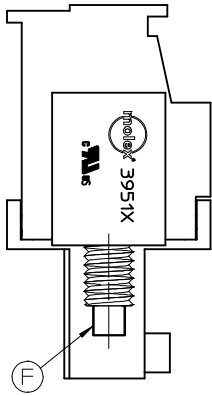
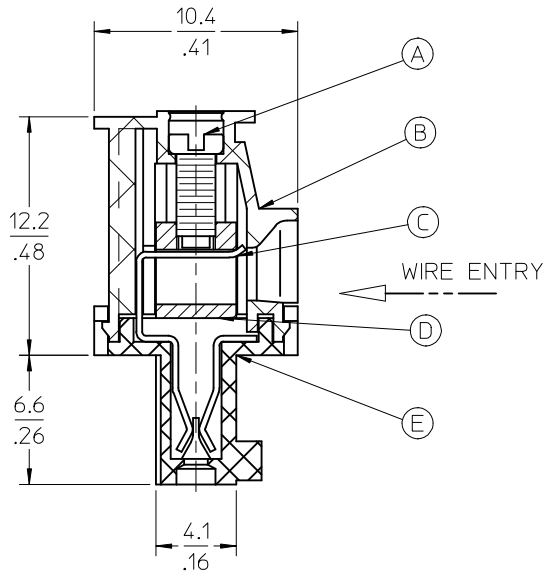
Contact us

Tel: +86-755-8981 8866 Fax: +86-755-8427 6832

Email & Skype: info@chipsmall.com Web: www.chipsmall.com

Address: A1208, Overseas Decoration Building, #122 Zhenhua RD., Futian, Shenzhen, China





SPECIFICATIONS:

1. MATERIAL:
 - A. SCREW: STEEL.
 - B. BODY: NYLON 66 (PA 66)
 - C. TERMINAL: PHOSPHOR BRONZE
 - D. CAGE (*): BRASS
 - E. COVER: NYLON 66 (PA 66)
 - F. SCREW: STEEL

2. PRODUCT SPECIFICATION: PS-39500-001
3. WIRE RANGE: 30 - 16AWG
4. TORQUE: 2 in-lbs
5. WIRE STRIP LENGTH: 6.50/.256
6. NUMBER OF CIRCUIT POSITIONS AVAILABLE = 2 THROUGH 20
7. ASSEMBLY IS ROHS COMPLIANT

TOLERANCES			
MM	TOL	INCH	TOL
0-6	±0.25	0-.24	±.010
>6-30	±0.40	.24-1.18	±.016
>30-120	±0.50	1.18-4.76	±.020
>120	±0.80	>4.76	±.031

REVISED DOC TOL EC NO: IFC2017-0881 DRW: ANAGATH 2017/03/23 CHKD: APPR: BRUPERT 2017/04/18 REV	QUALITY SYMBOLS	GENERAL TOLERANCES (UNLESS SPECIFIED)	DIMENSION STYLE	SCALE	DESIGN UNITS	THIRD ANGLE PROJECTION
	▼=0 ▽=0	mm INCH 4 PLACES ± --- ± --- 3 PLACES ± --- ± --- 2 PLACES ± --- ± --- 1 PLACE ± --- ± --- 0 PLACE ± --- ± ---	MM/IN	1:1	METRIC	☉ THIRD ANGLE PROJECTION
		ANGULAR ± --- ° DRAFT WHERE APPLICABLE MUST REMAIN WITHIN DIMENSIONS	DRAWN BY DATE RSTONE 2015/01/12 CHECKED BY DATE B ARDEN 2015/01/14 APPROVED BY DATE JFMURPHY 2015/02/02	TITLE	3.81MM EURO TERM BLOCK VERT. PLUG FRONT WIRE ENTRY, MOUNTING ENDS	
	D3		MATERIAL NO. SEE SHEET 2 SIZE B	DOCUMENT NO.	SD-39517-001 SHEET NO. 1 OF 2	

THIS DRAWING CONTAINS INFORMATION THAT IS PROPRIETARY TO MOLEX INCORPORATED AND SHOULD NOT BE USED WITHOUT WRITTEN PERMISSION

Circuit Size	Material Numbers												Dimensional Information							
	Black						Green						Dim. A		Dim B		Dim C		Dim D	
	100% Tin			30 u" Gold			100% Tin			30 u" Gold			mm	inch	mm	inch	mm	inch	mm	inch
	Printing Options			Printing Options			Printing Options			Printing Options										
	None	10AV	11AV	None	10AV	11AV	None	10AV	11AV	None	10AV	11AV	mm	inch	mm	inch	mm	inch	mm	inch
2	395173002	395173302	395173402	395173502	395173002	395173902	395178002	395178302	395178402	395178502	395178902	395178902	8.4	0.33	3.91	0.150	12.0	0.50	18.0	0.71
3	395173003	395173303	395173403	395173503	395173903	395173903	395178003	395178303	395178403	395178503	395178903	395178903	12.2	0.48	7.62	0.300	16.6	0.65	21.8	0.86
4	395173004	395173304	395173404	395173504	395173804	395173904	395178004	395178304	395178404	395178504	395178904	395178904	16.0	0.63	11.43	0.450	20.4	0.80	25.6	1.01
5	395173005	395173305	395173405	395173505	395173805	395173905	395178005	395178305	395178405	395178505	395178905	395178905	19.8	0.78	15.21	0.600	24.2	0.95	29.1	1.16
6	395173006	395173306	395173406	395173506	395173806	395173906	395178006	395178306	395178406	395178506	395178906	395178906	23.7	0.93	19.05	0.750	28.1	1.11	33.3	1.31
7	395173007	395173307	395173407	395173507	395173807	395173907	395178007	395178307	395178407	395178507	395178907	395178907	27.5	1.08	22.86	0.900	31.9	1.26	37.1	1.48
8	395173008	395173308	395173408	395173508	395173808	395173908	395178008	395178308	395178408	395178508	395178908	395178908	31.3	1.23	26.67	1.050	35.7	1.41	40.9	1.61
9	395173009	395173309	395173409	395173509	395173809	395173909	395178009	395178309	395178409	395178509	395178909	395178909	35.1	1.38	30.48	1.200	39.5	1.56	44.7	1.76
10	395173010	395173310	395173410	395173510	395173810	395173910	395178010	395178310	395178410	395178510	395178910	395178910	38.9	1.53	34.29	1.350	43.3	1.70	48.5	1.91
11	395173011	395173311	395173411	395173511	395173811	395173911	395178011	395178311	395178411	395178511	395178911	395178911	42.7	1.68	38.10	1.500	47.1	1.85	52.3	2.06
12	395173012	395173312	395173412	395173512	395173812	395173912	395178012	395178312	395178412	395178512	395178912	395178912	46.5	1.83	41.91	1.650	50.9	2.00	56.1	2.21
13	395173013	395173313	395173413	395173513	395173813	395173913	395178013	395178313	395178413	395178513	395178913	395178913	50.3	1.98	45.72	1.800	54.7	2.16	59.9	2.36
14	395173014	395173314	395173414	395173514	395173814	395173914	395178014	395178314	395178414	395178514	395178914	395178914	54.1	2.13	49.53	1.950	58.5	2.30	63.7	2.51
15	395173015	395173315	395173415	395173515	395173815	395173915	395178015	395178315	395178415	395178515	395178915	395178915	57.9	2.28	53.34	2.100	62.3	2.45	67.5	2.66
16	395173016	395173316	395173416	395173516	395173816	395173916	395178016	395178316	395178416	395178516	395178916	395178916	61.8	2.43	57.15	2.250	66.2	2.61	71.4	2.81
17	395173017	395173317	395173417	395173517	395173817	395173917	395178017	395178317	395178417	395178517	395178917	395178917	65.6	2.58	60.96	2.400	70.0	2.76	75.2	2.96
18	395173018	395173318	395173418	395173518	395173818	395173918	395178018	395178318	395178418	395178518	395178918	395178918	69.4	2.73	64.77	2.550	73.8	2.91	79.0	3.11
19	395173019	395173319	395173419	395173519	395173819	395173919	395178019	395178319	395178419	395178519	395178919	395178919	73.2	2.88	68.58	2.700	77.6	3.06	82.8	3.26
20	395173020	395173320	395173420	395173520	395173820	395173920	395178020	395178320	395178420	395178520	395178920	395178920	77.0	3.03	72.39	2.850	81.4	3.20	86.6	3.41



NOTE: DIMS GREATER THAN 30mm (1.181in.) HAVE A TOLERANCE OF ±0.5mm (.02in.)

TOLERANCES			
MM	TOL	INCH	TOL
0-6	±0.25	0-.24	±.010
>6-30	±0.40	.24-1.18	±.016
>30-120	±0.50	1.18-4.76	±.020
>120	±0.80	>4.76	±.031

REVISED DOC TOL
 EC NO: IFC2017-0861
 DRAWN: ANAGATH 2017/03/23
 CHKD:
 APPR: BRUPERT 2017/04/18
 REV DESCRIPTION

QUALITY SYMBOLS
 ▽=0
 ▽=0

GENERAL TOLERANCES (UNLESS SPECIFIED)
 mm INCH
 4 PLACES ± --- ± ---
 3 PLACES ± --- ± ---
 2 PLACES ± --- ± ---
 1 PLACE ± --- ± ---
 0 PLACE ± --- ± ---
 ANGULAR ± ---°
 DRAFT WHERE APPLICABLE
 MUST REMAIN WITHIN DIMENSIONS

DIMENSION STYLE
MM/IN
 DRAWN BY DATE
 RSTONE 2015/01/12
 CHECKED BY DATE
 B ARDEN 2015/01/14
 APPROVED BY DATE
 JFMURPHY 2015/02/02
 MATERIAL NO.
SEE TABLE
 SIZE B

SCALE
1:1
 DESIGN UNITS
METRIC
 THIRD ANGLE PROJECTION
3.81MM EURO TERM BLOCK VERT. PLUG FRONT WIRE ENTRY, MOUNTING ENDS

 DOCUMENT NO.
SD-39517-001
 SHEET NO.
2 OF 2
 THIS DRAWING CONTAINS INFORMATION THAT IS PROPRIETARY TO MOLEX INCORPORATED AND SHOULD NOT BE USED WITHOUT WRITTEN PERMISSION