



Chipsmall Limited consists of a professional team with an average of over 10 year of expertise in the distribution of electronic components. Based in Hongkong, we have already established firm and mutual-benefit business relationships with customers from,Europe,America and south Asia,supplying obsolete and hard-to-find components to meet their specific needs.

With the principle of "Quality Parts,Customers Priority,Honest Operation,and Considerate Service",our business mainly focus on the distribution of electronic components. Line cards we deal with include Microchip,ALPS,ROHM,Xilinx,Pulse,ON,Everlight and Freescale. Main products comprise IC,Modules,Potentiometer,IC Socket,Relay,Connector.Our parts cover such applications as commercial,industrial, and automotives areas.

We are looking forward to setting up business relationship with you and hope to provide you with the best service and solution. Let us make a better world for our industry!



Contact us

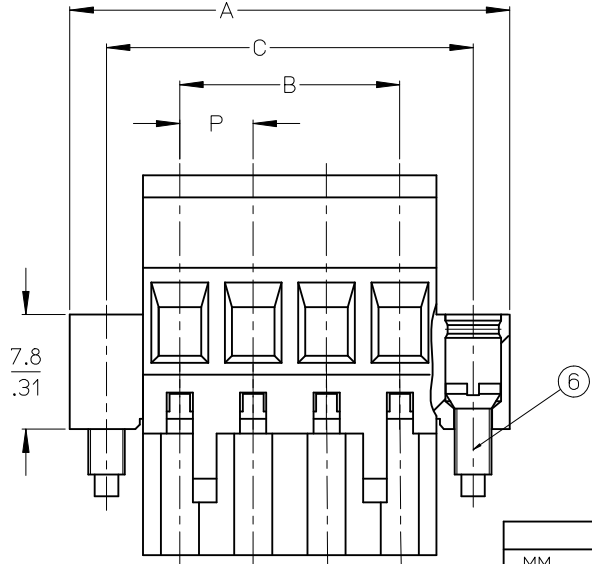
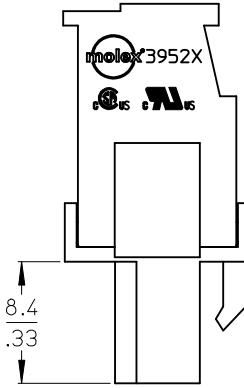
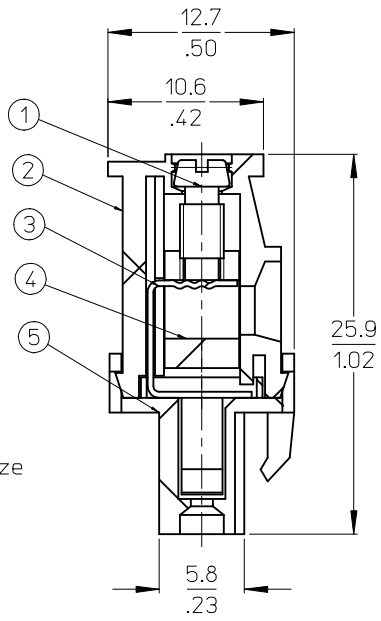
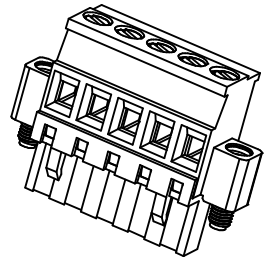
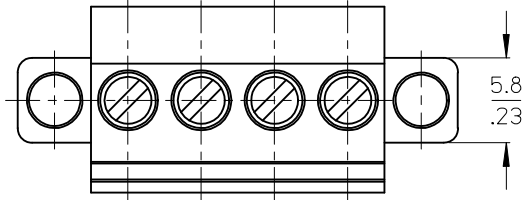
Tel: +86-755-8981 8866 Fax: +86-755-8427 6832

Email & Skype: info@chipsmall.com Web: www.chipsmall.com

Address: A1208, Overseas Decoration Building, #122 Zhenhua RD., Futian, Shenzhen, China



10 9 8 7 6 5 4 3 2 1



SPECIFICATIONS

1. Material:
 - (1). Screw: Steel
 - (2). Body: PA66
 - (3). Terminal: Phosphor Bronze
 - (4). Cage: Brass
 - (5). Cover: PA66
 - (6). Screw: Steel
2. Wire range: 12 - 26AWG
3. Electrical rating: 300V, 10A.
4. Wire strip length: 5.0mm.
5. Operating temperature: -40°C to +105°C.
6. Max torque: 3 in-lbs.
7. Insulation resistance: DC 500V, 500 Megohms.
8. Dielectric withstand: AC 2500V for 1 minute
9. Breakdown voltage: 4000V
10. Contact resistance: <10 milliohms
11. DIM. A = (N + 2)X P
12. DIM. B = (N - 1)X P
13. DIM. C = (N + 1)X P
14. DIM. P (PITCH) = 5.00mm (.197")
15. N = Number of positions available 2 through 24.
16. ALL COMPONENTS ARE ROHS COMPLIANT.

TOLERANCES			
MM	TOL	INCH	TOL
0-6	±0.25	0-.24	±.010
>6-30	±0.40	.24-1.18	±.016
>30-120	±0.50	1.18-4.76	±.020
>120	±0.80	>4.76	±.031

REVISED DOC TOL EC NO: IFC2017-0881 DRAWN: CRADDOREMS 2017/03/22 CHKD: APPR: BRUPERT 2017/04/18 REV: A1	QUALITY SYMBOLS ▽=0 ▽=0	GENERAL TOLERANCES (UNLESS SPECIFIED) mm INCH 4 PLACES ±--- ±--- 3 PLACES ±--- ±--- 2 PLACES ±--- ±--- 1 PLACE ±--- ±--- ANGULAR ±---°	DIMENSION STYLE MM/IN DRAWN BY DATE C. YORK 2006/03/16 CHECKED BY DATE R. DEROSS 2006/03/16 APPROVED BY DATE R. DEROSS 2006/03/16 MATERIAL NO.	SCALE DESIGN UNITS INCH THIRD ANGLE PROJECTION	TITLE 5.0MM, EURO PLUG, VERTICAL, REAR WIRE ENTRY WITH MOUNTING ENDS MOLEX INCORPORATED DOCUMENT NO. SD-39527-001 SHEET NO. 1 OF 2	
	DRAFT WHERE APPLICABLE MUST REMAIN WITHIN DIMENSIONS		SEE SHT. 2	THIS DRAWING CONTAINS INFORMATION THAT IS PROPRIETARY TO MOLEX INCORPORATED AND SHOULD NOT BE USED WITHOUT WRITTEN PERMISSION		

9 8 7 6 5 4 3 2 1

Description	Circuit size	Material Numbers															Dimensional Information					
		Black									Green						Dim A		Dim B		Dim C	
		100%Tin			30 u" Gold			100%Tin			30 u" Gold			mm	inch	mm	inch	mm	inch			
		Painting Options:			Painting Options:			Painting Options:			Painting Options:											
None	10AV	11AV	None	10AV	11AV	None	10AV	11AV	None	10AV	11AV	None	10AV	11AV								
5.0mm. Euro Plug, Vertical RWE, Mounting Ends	2	395273002	395273302	395273402	395273502	395273602	395273902	395279002	395279302	395279402	395279502	395279902	395278902	395278902	20.0	0.79	5.0	0.20	15.0	0.59		
5.0mm. Euro Plug, Vertical RWE, Mounting Ends	3	395273003	395273303	395273403	395273503	395273603	395273903	395279003	395279303	395279403	395279503	395279903	395278903	395278903	25.0	0.98	10.0	0.39	20.0	0.79		
5.0mm. Euro Plug, Vertical RWE, Mounting Ends	4	395273004	395273304	395273404	395273504	395273604	395273904	395279004	395279304	395279404	395279504	395279904	395278904	395278904	30.0	1.18	15.0	0.59	25.0	0.98		
5.0mm. Euro Plug, Vertical RWE, Mounting Ends	5	395273005	395273305	395273405	395273505	395273605	395273905	395279005	395279305	395279405	395279505	395279905	395278905	395278905	35.0	1.38	20.0	0.79	30.0	1.18		
5.0mm. Euro Plug, Vertical RWE, Mounting Ends	6	395273006	395273306	395273406	395273506	395273606	395273906	395279006	395279306	395279406	395279506	395279906	395278906	395278906	40.0	1.58	25.0	0.98	35.0	1.38		
5.0mm. Euro Plug, Vertical RWE, Mounting Ends	7	395273007	395273307	395273407	395273507	395273607	395273907	395279007	395279307	395279407	395279507	395279907	395278907	395278907	45.0	1.77	30.0	1.18	40.0	1.58		
5.0mm. Euro Plug, Vertical RWE, Mounting Ends	8	395273008	395273308	395273408	395273508	395273608	395273908	395279008	395279308	395279408	395279508	395279908	395278908	395278908	50.0	1.97	35.0	1.38	45.0	1.77		
5.0mm. Euro Plug, Vertical RWE, Mounting Ends	9	395273009	395273309	395273409	395273509	395273609	395273909	395279009	395279309	395279409	395279509	395279909	395278909	395278909	55.0	2.17	40.0	1.58	50.0	1.97		
5.0mm. Euro Plug, Vertical RWE, Mounting Ends	10	395273010	395273310	395273410	395273510	395273610	395273910	395279010	395279310	395279410	395279510	395279910	395278910	395278910	60.0	2.36	45.0	1.77	55.0	2.17		
5.0mm. Euro Plug, Vertical RWE, Mounting Ends	11	395273011	395273311	395273411	395273511	395273611	395273911	395279011	395279311	395279411	395279511	395279911	395278911	395278911	65.0	2.56	50.0	1.97	60.0	2.36		
5.0mm. Euro Plug, Vertical RWE, Mounting Ends	12	395273012	395273312	395273412	395273512	395273612	395273912	395279012	395279312	395279412	395279512	395279912	395278912	395278912	70.0	2.76	55.0	2.17	65.0	2.56		
5.0mm. Euro Plug, Vertical RWE, Mounting Ends	13	395273013	395273313	395273413	395273513	395273613	395273913	395279013	395279313	395279413	395279513	395279913	395278913	395278913	75.0	2.95	60.0	2.36	70.0	2.76		
5.0mm. Euro Plug, Vertical RWE, Mounting Ends	14	395273014	395273314	395273414	395273514	395273614	395273914	395279014	395279314	395279414	395279514	395279914	395278914	395278914	80.0	3.15	65.0	2.56	75.0	2.95		
5.0mm. Euro Plug, Vertical RWE, Mounting Ends	15	395273015	395273315	395273415	395273515	395273615	395273915	395279015	395279315	395279415	395279515	395279915	395278915	395278915	85.0	3.35	70.0	2.76	80.0	3.15		
5.0mm. Euro Plug, Vertical RWE, Mounting Ends	16	395273016	395273316	395273416	395273516	395273616	395273916	395279016	395279316	395279416	395279516	395279916	395278916	395278916	90.0	3.54	75.0	2.95	85.0	3.35		
5.0mm. Euro Plug, Vertical RWE, Mounting Ends	17	395273017	395273317	395273417	395273517	395273617	395273917	395279017	395279317	395279417	395279517	395279917	395278917	395278917	95.0	3.74	80.0	3.15	90.0	3.54		
5.0mm. Euro Plug, Vertical RWE, Mounting Ends	18	395273018	395273318	395273418	395273518	395273618	395273918	395279018	395279318	395279418	395279518	395279918	395278918	395278918	100.0	3.94	85.0	3.35	95.0	3.74		
5.0mm. Euro Plug, Vertical RWE, Mounting Ends	19	395273019	395273319	395273419	395273519	395273619	395273919	395279019	395279319	395279419	395279519	395279919	395278919	395278919	105.0	4.13	90.0	3.54	100.0	3.94		
5.0mm. Euro Plug, Vertical RWE, Mounting Ends	20	395273020	395273320	395273420	395273520	395273620	395273920	395279020	395279320	395279420	395279520	395279920	395278920	395278920	110.0	4.33	95.0	3.74	105.0	4.13		
5.0mm. Euro Plug, Vertical RWE, Mounting Ends	21	395273021	395273321	395273421	395273521	395273621	395273921	395279021	395279321	395279421	395279521	395279921	395278921	395278921	115.0	4.53	100.0	3.94	110.0	4.33		
5.0mm. Euro Plug, Vertical RWE, Mounting Ends	22	395273022	395273322	395273422	395273522	395273622	395273922	395279022	395279322	395279422	395279522	395279922	395278922	395278922	120.0	4.72	105.0	4.13	115.0	4.53		
5.0mm. Euro Plug, Vertical RWE, Mounting Ends	23	395273023	395273323	395273423	395273523	395273623	395273923	395279023	395279323	395279423	395279523	395279923	395278923	395278923	125.0	4.92	110.0	4.33	120.0	4.72		
5.0mm. Euro Plug, Vertical RWE, Mounting Ends	24	395273024	395273324	395273424	395273524	395273624	395273924	395279024	395279324	395279424	395279524	395279924	395278924	395278924	130.0	5.12	115.0	4.53	125.0	4.92		

TOLERANCES			
MM	TOL	INCH	TOL
0-6	±0.25	0-.24	±.010
>6-30	±0.40	.24-1.18	±.016
>30-120	±0.50	1.18-4.76	±.020
>120	±0.80	>4.76	±.031

REVISED DOC TOL EC NO: IFC2017-0861 DRAWN: CRADDREWS 2017/03/22 CHKD: APPR: BRUPERT 2017/04/18 REV	QUALITY SYMBOLS ▽=0 ▽=0	GENERAL TOLERANCES (UNLESS SPECIFIED) mm INCH 4 PLACES ± --- ± --- 3 PLACES ± --- ± --- 2 PLACES ± --- ± --- 1 PLACE ± --- ± --- ANGULAR ± ---°	DIMENSION STYLE MM/IN DRAWN BY DATE C. YORK 2006/03/16 CHECKED BY DATE R. DEROSS 2006/03/16 APPROVED BY DATE R. DEROSS 2006/03/16	SCALE DESIGN UNITS INCH THIRD ANGLE PROJECTION
	DRAFT WHERE APPLICABLE MUST REMAIN WITHIN DIMENSIONS		MATERIAL NO. SEE CHART	TITLE 5.0MM, EURO PLUG, VERTICAL, REAR WIRE ENTRY WITH MOUNTING ENDS MOLEX INCORPORATED
	SHEET NO. 2 OF 2		DOCUMENT NO. SD-39527-001	
	THIS DRAWING CONTAINS INFORMATION THAT IS PROPRIETARY TO MOLEX INCORPORATED AND SHOULD NOT BE USED WITHOUT WRITTEN PERMISSION			