



Chipsmall Limited consists of a professional team with an average of over 10 year of expertise in the distribution of electronic components. Based in Hongkong, we have already established firm and mutual-benefit business relationships with customers from,Europe,America and south Asia,supplying obsolete and hard-to-find components to meet their specific needs.

With the principle of "Quality Parts,Customers Priority,Honest Operation,and Considerate Service",our business mainly focus on the distribution of electronic components. Line cards we deal with include Microchip,ALPS,ROHM,Xilinx,Pulse,ON,Everlight and Freescale. Main products comprise IC,Modules,Potentiometer,IC Socket,Relay,Connector.Our parts cover such applications as commercial,industrial, and automotives areas.

We are looking forward to setting up business relationship with you and hope to provide you with the best service and solution. Let us make a better world for our industry!



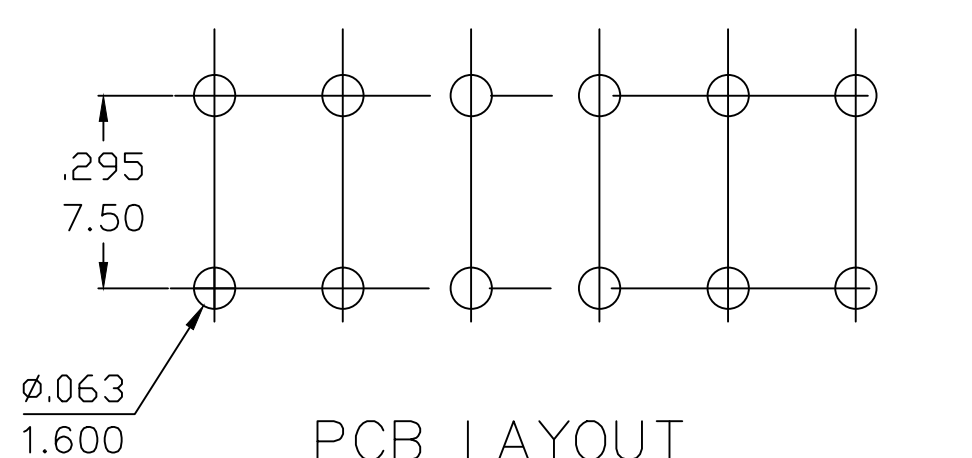
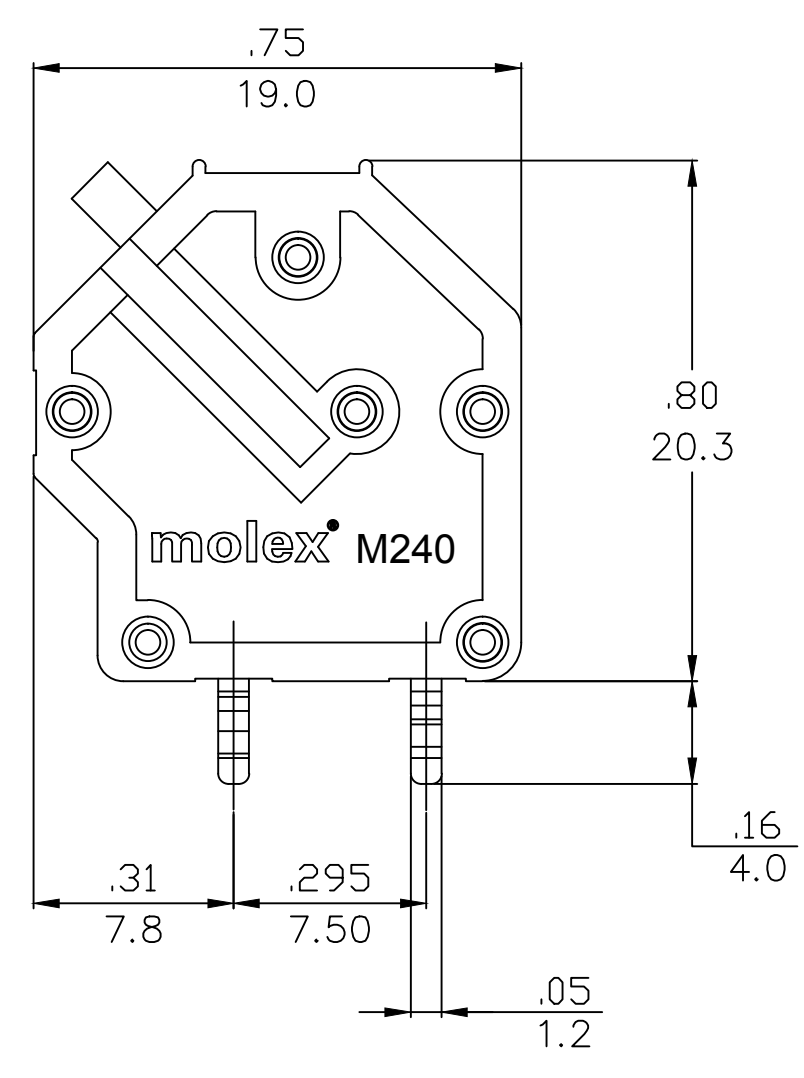
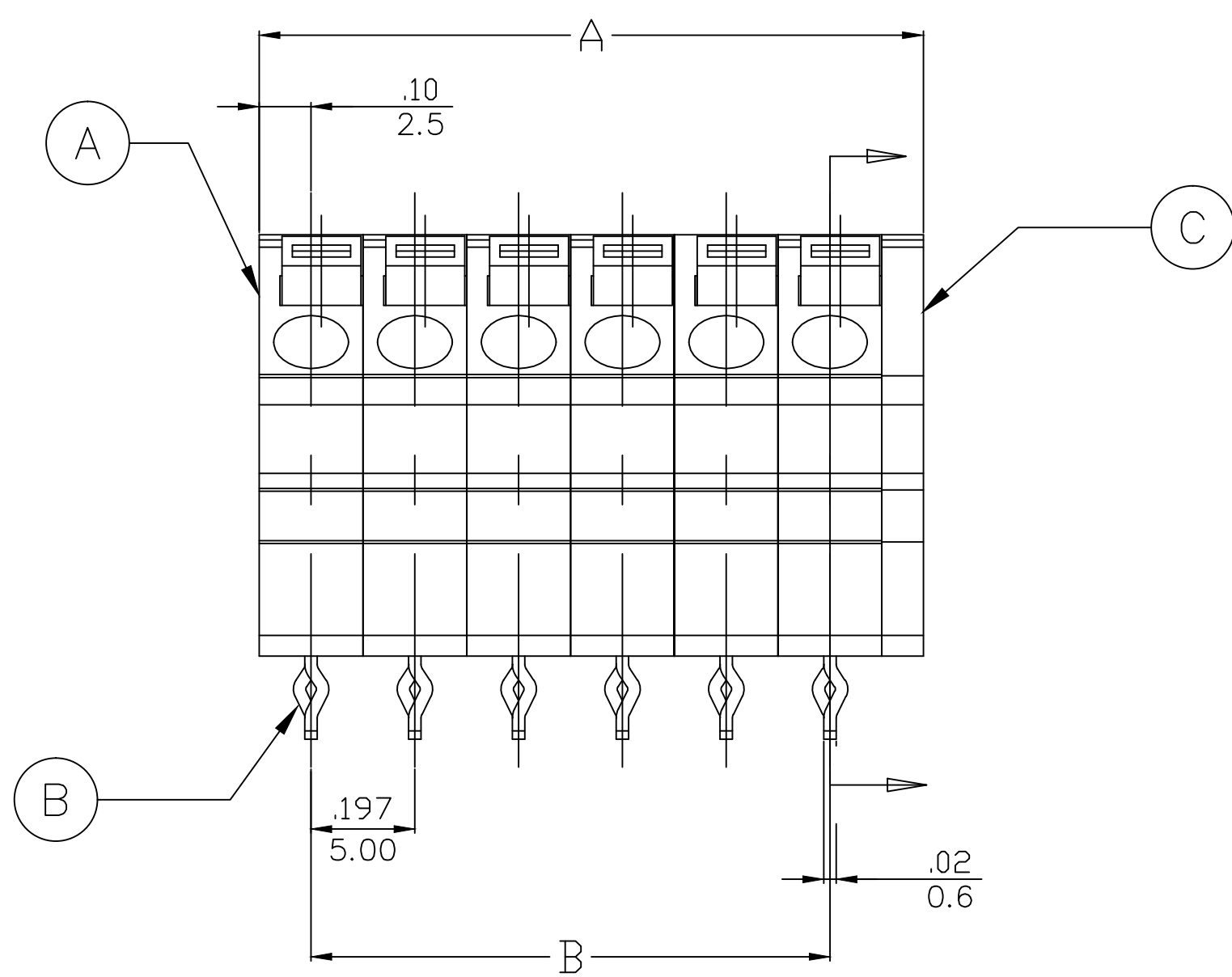
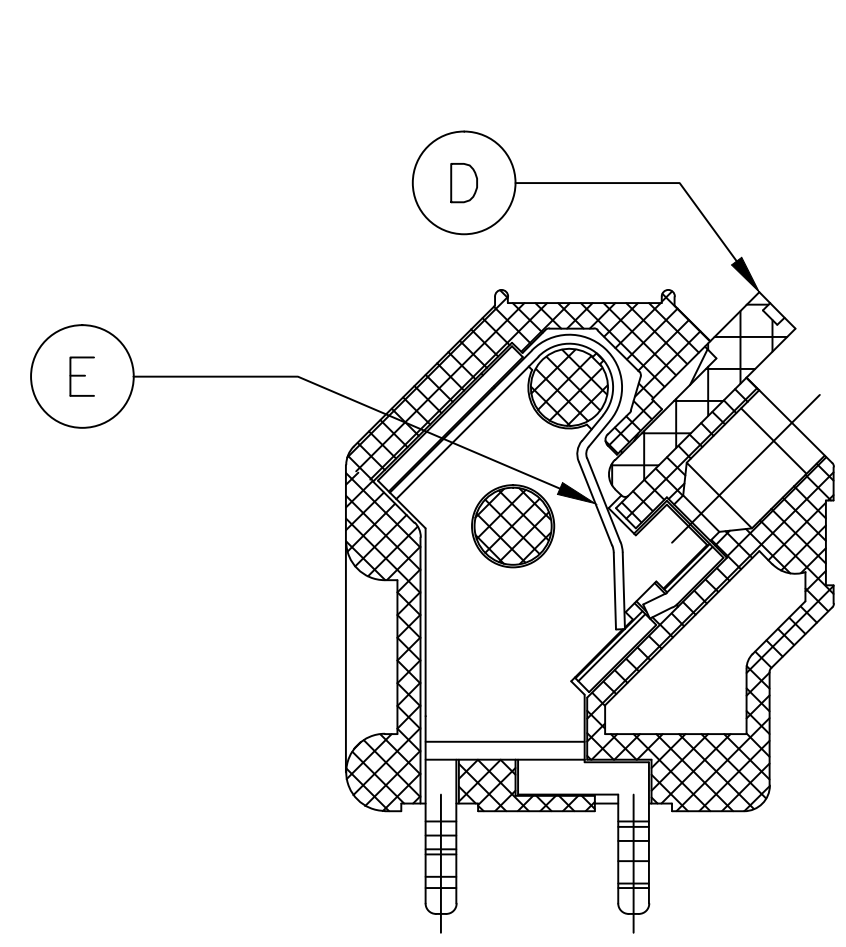
Contact us

Tel: +86-755-8981 8866 Fax: +86-755-8427 6832

Email & Skype: info@chipsmall.com Web: www.chipsmall.com

Address: A1208, Overseas Decoration Building, #122 Zhenhua RD., Futian, Shenzhen, China





ENGINEERING LEGEND
 M240-00-1-XX-M3
 SERIES STYLE | POLES COLOR
 PITCH

SPECIFICATIONS:

1. Material:
 - A Single Body: PA66 UL94 V-0
 - B Single Terminal: Brass Tin plated
 - C Cover: PA66 UL94 V-0
 - D Button: PA66 UL94 V-0
 - E Spring: Stainless Steel
2. Wire Size: 26 to 14AWG
3. Rating: 300V, 10A
4. Wire strip length: 11.00mm
5. Power Frequency withstand: AC 2500V for 1 minute
6. Insulation resistance: DC 500V, 500MΩ
7. Rated Impulse Voltage: 4000V ±5 times each.
8. Operating Temperature: -40 to +105°
9. Pitch: 5.00mm (.197 in.)
10. Dims shown are for reference only

| TOLERANCES | | | |
|------------|-------|-----------|--------|
| MM | TOL | INCH | TOL |
| 0-6 | ±0.25 | 0-24 | ±0.010 |
| >6-30 | ±0.40 | 0.24-1.18 | ±0.016 |
| >30-120 | ±0.50 | 1.18-4.76 | ±0.020 |
| >120 | ±0.80 | >4.76 | ±0.031 |

| PART NUMBER DATA | | | | | | | |
|------------------|-------------|--------------------|------------|------|------|------|-------|
| CIRCUITS | PART NUMBER | ENGINEERING NUMBER | COLOR | A IN | mm | B IN | mm |
| 2 | 397000402 | M240-00-1-02-M3 | LIGHT GRAY | .47 | 12.0 | .197 | 5.00 |
| 3 | 397000403 | M240-00-1-03-M3 | | .67 | 17.0 | .394 | 10.00 |
| 4 | 397000404 | M240-00-1-04-M3 | | .87 | 22.0 | .591 | 15.00 |
| 5 | 397000405 | M240-00-1-05-M3 | | 1.06 | 27.0 | .787 | 20.00 |
| 6 | 397000406 | M240-00-1-06-M3 | | 1.26 | 32.0 | .984 | 25.00 |

| | | | | | | | |
|--|---|----------------------------------|-------------------------------------|---|------------------------|------------------------|--|
| EC DESCRIPTION EC NO.: PG2014-0570 DRWN: RSTONE 2013/10/16 CHKD: --- APPR: --- | DESCRIPTION --- --- --- --- | QUALITY SYMBOL ▽=0 □=0 | DIMENSION STYLE IN/MM | SCALE --- | DESIGN UNITS METRIC | THIRD ANGLE PROJECTION | |
| | | DRAWN BY RSTONE | DATE 2013/10/16 | TITLE SPRING TERMINAL BLOCK 5.0MM, 45 DEG-MODULAR | | | |
| | | CHECKED BY --- | DATE --- | --- | | | |
| | | APPROVED BY --- | DATE --- | MOLEX INCORPORATED | | | |
| | | MATERIAL NO. SEE TABLE | DOCUMENT NO. SD-39700-004 | SHEET NO. 1 OF 1 | | | |

THIS DRAWING CONTAINS INFORMATION THAT IS PROPRIETARY TO MOLEX INCORPORATED AND SHOULD NOT BE USED WITHOUT WRITTEN PERMISSION