



Chipsmall Limited consists of a professional team with an average of over 10 year of expertise in the distribution of electronic components. Based in Hongkong, we have already established firm and mutual-benefit business relationships with customers from,Europe,America and south Asia,supplying obsolete and hard-to-find components to meet their specific needs.

With the principle of “Quality Parts,Customers Priority,Honest Operation,and Considerate Service”,our business mainly focus on the distribution of electronic components. Line cards we deal with include Microchip,ALPS,ROHM,Xilinx,Pulse,ON,Everlight and Freescale. Main products comprise IC,Modules,Potentiometer,IC Socket,Relay,Connector.Our parts cover such applications as commercial,industrial, and automotives areas.

We are looking forward to setting up business relationship with you and hope to provide you with the best service and solution. Let us make a better world for our industry!



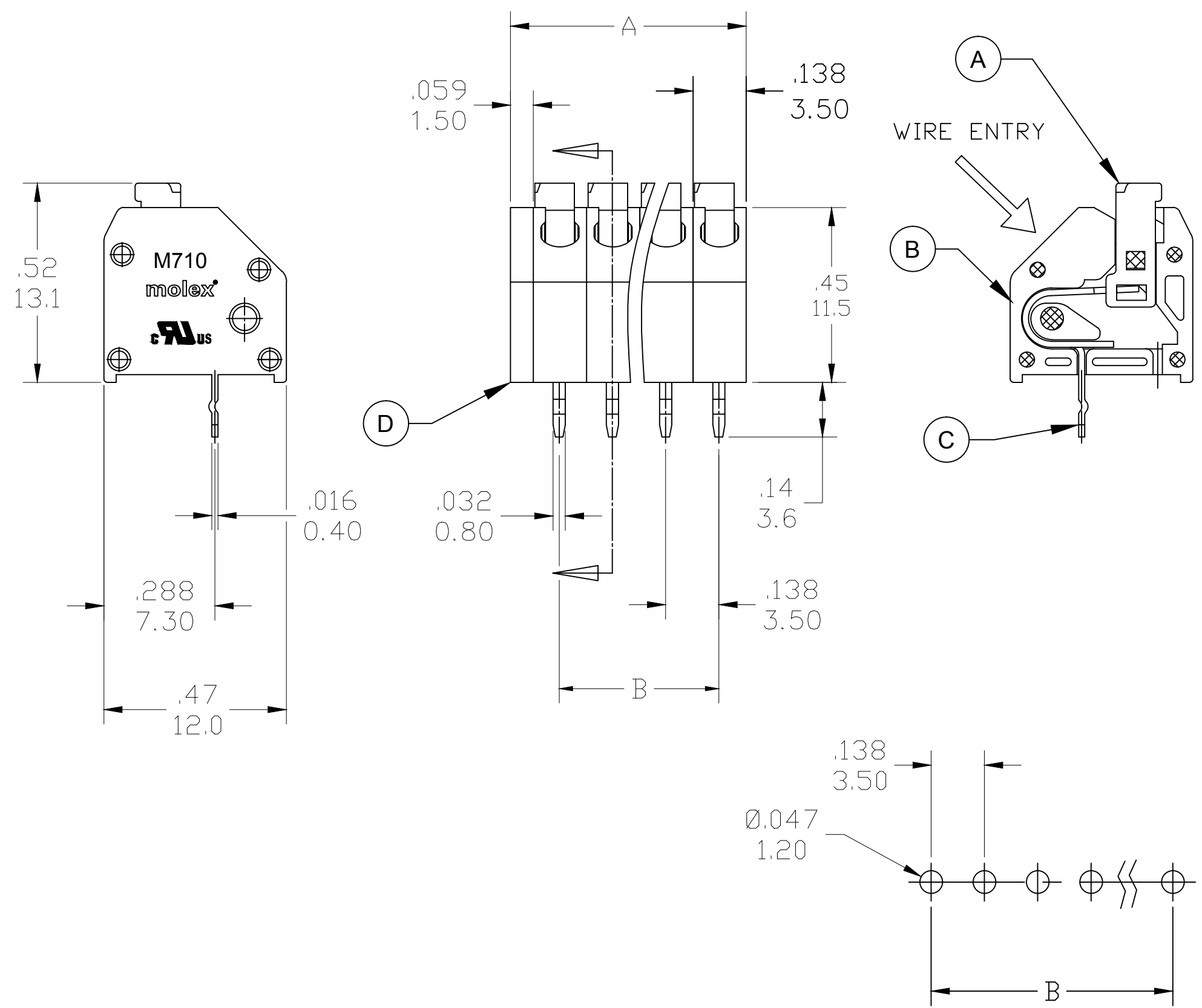
## Contact us

Tel: +86-755-8981 8866 Fax: +86-755-8427 6832

Email & Skype: info@chipsmall.com Web: www.chipsmall.com

Address: A1208, Overseas Decoration Building, #122 Zhenhua RD., Futian, Shenzhen, China





PART NUMBER DATA								
CIRCUITS	PART NUMBER	ENGINEERING NUMBER	COLOR	A IN mm		B IN mm		
2	397000702	M710-02-02-9	LT GRAY	.33	8.5	.138	3.50	
3	397000703	M710-02-03-9	LT GRAY	.47	12.0	.276	7.00	
4	397000704	M710-02-04-9	LT GRAY	.61	15.5	.413	10.50	
5	397000705	M710-02-05-9	LT GRAY	.75	19.0	.551	14.00	
6	397000706	M710-02-06-9	LT GRAY	.89	22.5	.689	17.50	
7	397000707	M710-02-07-9	LT GRAY	1.02	26.0	.827	21.00	
8	397000708	M710-02-08-9	LT GRAY	1.16	29.5	.965	24.50	
9	397000709	M710-02-09-9	LT GRAY	1.30	33.0	1.102	28.00	
10	397000710	M710-02-10-9	LT GRAY	1.44	36.5	1.240	31.50	
11	397000711	M710-02-11-9	LT GRAY	1.57	40.0	1.378	35.00	
12	397000712	M710-02-12-9	LT GRAY	1.71	43.5	1.516	38.50	
13	397000713	M710-02-13-9	LT GRAY	1.85	47.0	1.654	42.00	
14	397000714	M710-02-14-9	LT GRAY	1.99	50.5	1.791	45.50	
15	397000715	M710-02-15-9	LT GRAY	2.13	54.0	1.929	49.00	
16	397000716	M710-02-16-9	LT GRAY	2.26	57.5	2.067	52.50	
17	397000717	M710-02-17-9	LT GRAY	2.40	61.0	2.205	56.00	
18	397000718	M710-02-18-9	LT GRAY	2.54	64.5	2.343	59.50	
19	397000719	M710-02-19-9	LT GRAY	2.68	68.0	2.480	63.00	
20	397000720	M710-02-20-9	LT GRAY	2.82	71.5	2.618	66.50	
21	397000721	M710-02-21-9	LT GRAY	2.95	75.0	2.756	70.00	
22	397000722	M710-02-22-9	LT GRAY	3.09	78.5	2.894	73.50	
23	397000723	M710-02-23-9	LT GRAY	3.23	82.0	3.032	77.00	
24	397000724	M710-02-24-9	LT GRAY	3.37	85.5	3.169	80.50	

REF. LAST 2 DIGITS OF PART NUMBER EQUALS CIRCUIT COUNT

**SPECIFICATIONS:**

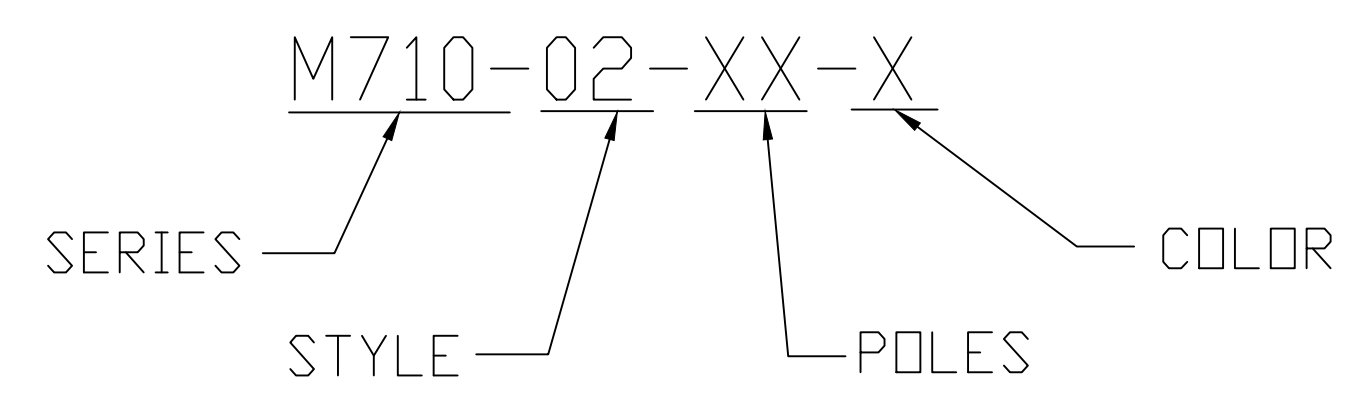
- MATERIAL:
  - A. BUTTON: PA66 UL94 V-0
  - B. BODY : PA66 UL94 V-0
  - C. TERMINAL: PHOS-BRONZE, TIN PLATED
  - D. COVER: PA66 UL94 V-0
- WIRE SIZE: 20 - 16AWG
- ELECTRICAL RATING (UL): 300V, 5A
- WIRE STRIP LENGTH: .31 (8.0mm)
- POWER FREQUENCY WITHSTAND: AC 2000V FOR 1 MINUTE
- INSULATION RESISTANCE: DC 500V, 500MΩ
- RATED IMPULSE VOLTAGE: 2500V PLUS AND MINUS 5 TIMES EACH
- OPERATING TEMPERATURE: -40°C TO +105°C
- MAX. SOLDERING TEMP: 260°C (500°F) FOR 5 SECONDS
- DIMS SHOWN ARE FOR REFERENCE ONLY

**PCB LAYOUT**

TOLERANCES			
MM	TOL	INCH	TOL
0-6	±0.25	0-24	±0.010
>6-30	±0.40	0.24-1.18	±0.016
>30-120	±0.50	1.18-4.76	±0.020
>120	±0.80	>4.76	±0.031

**CONTACT FACTORY FOR OPTIONAL COLORS**

**ENGINEERING NUMBER LEGEND**



EC DESCRIPTION EC NO.: PG2014-1520 DRWN: RSTONE 2/25/14 CHKD: G FARNSW APPR: ---	QUALITY SYMBOL ▽=0 □=0	DIMENSION STYLE IN/MM	SCALE ---	DESIGN UNITS METRIC	THIRD ANGLE PROJECTION	
	DRAWN BY RSTONE	DATE 2013/10/02	TITLE <b>SPRING TERMINAL BLOCK          .138 (3.50) PITCH 45 DEG          MODULAR</b>			
	CHECKED BY G FARNSW	DATE 2013/12/20	MOLEX INCORPORATED			
	APPROVED BY JFMURPHY	DATE 2013/12/26	MATERIAL NO. <b>SEE TABLE</b>	DOCUMENT NO. <b>SD-39700-008</b>	SHEET NO. <b>1 OF 1</b>	
	SIZE <b>C</b>	THIS DRAWING CONTAINS INFORMATION THAT IS PROPRIETARY TO MOLEX INCORPORATED AND SHOULD NOT BE USED WITHOUT WRITTEN PERMISSION				