



Chipsmall Limited consists of a professional team with an average of over 10 year of expertise in the distribution of electronic components. Based in Hongkong, we have already established firm and mutual-benefit business relationships with customers from,Europe,America and south Asia,supplying obsolete and hard-to-find components to meet their specific needs.

With the principle of “Quality Parts,Customers Priority,Honest Operation,and Considerate Service”,our business mainly focus on the distribution of electronic components. Line cards we deal with include Microchip,ALPS,ROHM,Xilinx,Pulse,ON,Everlight and Freescale. Main products comprise IC,Modules,Potentiometer,IC Socket,Relay,Connector.Our parts cover such applications as commercial,industrial, and automotives areas.

We are looking forward to setting up business relationship with you and hope to provide you with the best service and solution. Let us make a better world for our industry!



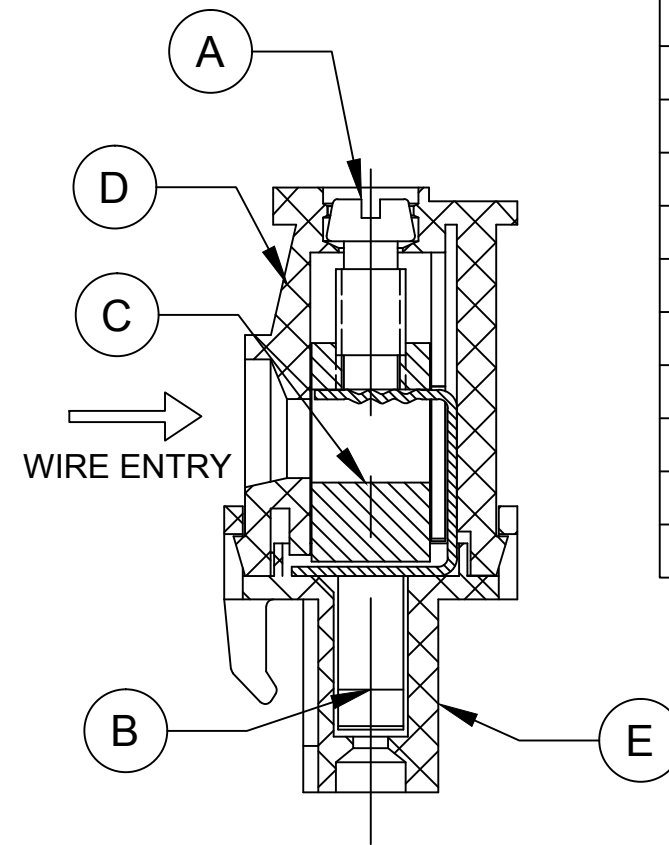
Contact us

Tel: +86-755-8981 8866 Fax: +86-755-8427 6832

Email & Skype: info@chipsmall.com Web: www.chipsmall.com

Address: A1208, Overseas Decoration Building, #122 Zhenhua RD., Futian, Shenzhen, China





PART NUMBER DATA							
CIRCUITS	PART NUMBER	ENGINEERING NUMBER	COLOR	A IN mm		B IN mm	
2	397060002	M750B-05-5-02-3	GREEN	.52	13.2	.300	7.62
3	397060003	M750B-05-5-03-3	GREEN	.82	20.8	.600	15.24
4	397060004	M750B-05-5-04-3	GREEN	1.12	28.4	.900	22.86
5	397060005	M750B-05-5-05-3	GREEN	1.42	36.1	1.200	30.48
6	397060006	M750B-05-5-06-3	GREEN	1.72	43.7	1.500	38.10
7	397060007	M750B-05-5-07-3	GREEN	2.02	51.3	1.800	45.72
8	397060008	M750B-05-5-08-3	GREEN	2.32	58.9	2.100	53.34
9	397060009	M750B-05-5-09-3	GREEN	2.62	66.5	2.400	60.96
10	397060010	M750B-05-5-10-3	GREEN	2.92	74.2	2.700	68.58
11	397060011	M750B-05-5-11-3	GREEN	3.22	81.8	3.000	76.20
12	397060012	M750B-05-5-12-3	GREEN	3.52	89.4	3.300	83.82

CONTACT FACTORY FOR OPTIONAL COLORS

SPECIFICATIONS

1. MATERIAL:
 - A. SCREW: STEEL, M3, ZINC PLATED
 - B. CONTACT : BRONZE, TIN PLATED
 - C. CAGE: BRASS, NICKEL PLATED
 - D. BODY : PA66, UL94 V-0
 - E. COVER: PA66, UL94 V-0
2. WIRE SIZE: 30-12AWG
3. ELECTRICAL RATING: 15A AT 51-150V, 10A AT 151-300V
4. POWER-FREQUENCY WITHSTAND: AC 2500V/1MIN.
5. INSULATION RESISTANCE: DC500V 500MΩ OR ABOVE
6. RATED IMPULSE VOLTAGE: 4000V/MINUS AND PLUS 5 TIMES EACH
7. WIRE STRIP LENGTH: .28 IN. (7.0mm)
8. SCREW TORQUE: 5.0 IN LBS. (0.56 N.M)
9. OPERATING TEMPERATURE: -40°C TO +105°C
10. DIMS SHOWN ARE FOR REFERENCE ONLY

TOLERANCES			
MM	TOL	INCH	TOL
0-6	±0.25	0-.24	±.010
>6-30	±0.40	.24-1.18	±.016
>30-120	±0.50	1.18-4.76	±.020
>120	±0.80	>4.76	±.031

REVISED DOC TOL EC NO: IPG2017-0881 DRWN: ABENJAMI CH'KD: ---- APPR: BRUPERT		4/5/17 2014/10/16	----- -----	DESCRIPTION	REV	QUALITY SYMBOL	GENERAL TOLERANCES (UNLESS SPECIFIED)			DIMENSION STYLE MM ONLY		SCALE ---	DESIGN UNITS METRIC	THIRD ANGLE PROJECTION			
								mm	INCH	DRAWN BY	DATE	TITLE					
A1						<div>▽=0</div> <div>⋄C=0</div>	4 PLACES	±---	±---	RSTONE	2014/02/27	PLUGABLE TERMINAL BLOCK 7.62MM (.300) PITCH VERTICAL, FRONT FACING					
							3 PLACES	±---	±---	CHECKED BY	DATE						
							2 PLACES	±---	±---	G. FARNS	----						
							1 PLACE	±---	±---	APPROVED BY	DATE	<div><div>molex</div>MOLEX INCORPORATED</div>					
							ANGULAR ±---°			JFMURPHY	2014/10/16						MATERIAL NO.
							DRAFT WHERE APPLICABLE MUST REMAIN WITHIN DIMENSIONS			SEE CHART		THIS DRAWING CONTAINS INFORMATION THAT IS PROPRIETARY TO MOLEX INCORPORATED AND SHOULD NOT BE USED WITHOUT WRITTEN PERMISSION					