



Chipsmall Limited consists of a professional team with an average of over 10 year of expertise in the distribution of electronic components. Based in Hongkong, we have already established firm and mutual-benefit business relationships with customers from,Europe,America and south Asia,supplying obsolete and hard-to-find components to meet their specific needs.

With the principle of “Quality Parts,Customers Priority,Honest Operation,and Considerate Service”,our business mainly focus on the distribution of electronic components. Line cards we deal with include Microchip,ALPS,ROHM,Xilinx,Pulse,ON,Everlight and Freescale. Main products comprise IC,Modules,Potentiometer,IC Socket,Relay,Connector.Our parts cover such applications as commercial,industrial, and automotives areas.

We are looking forward to setting up business relationship with you and hope to provide you with the best service and solution. Let us make a better world for our industry!



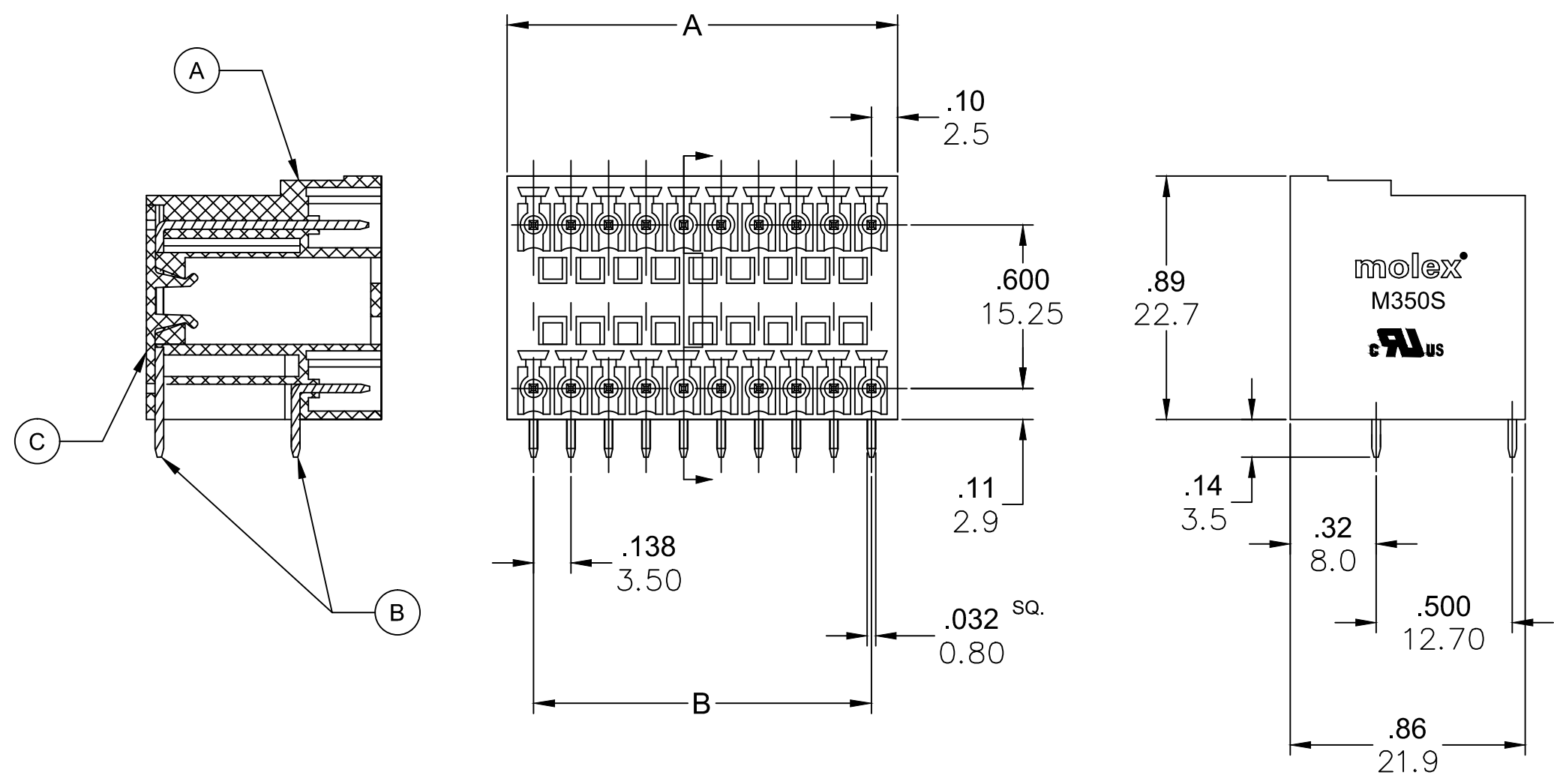
## Contact us

Tel: +86-755-8981 8866 Fax: +86-755-8427 6832

Email & Skype: info@chipsmall.com Web: www.chipsmall.com

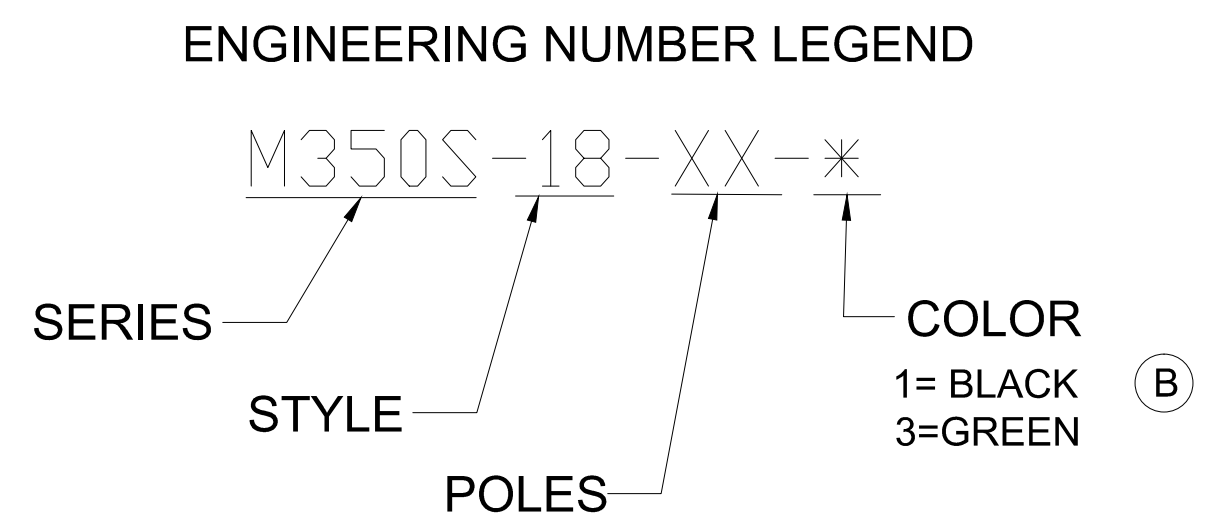
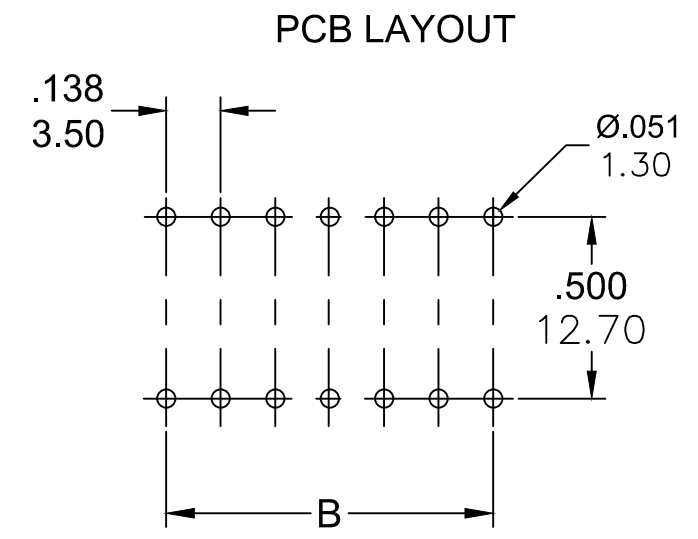
Address: A1208, Overseas Decoration Building, #122 Zhenhua RD., Futian, Shenzhen, China





PART NUMBER DATA								
CIRCUITS	PART NO. GREEN	ENGINEERING NUMBER	PART NO. BLACK (B)		A IN mm		B IN mm	
			PART NO. BLACK	ENGINEERING NUMBER				
2	397220002	M350S-18-02-3			.33	8.4	.138	3.50
3	397220003	M350S-18-03-3			.47	11.9	.276	7.00
4	397220004	M350S-18-04-3			.61	15.4	.413	10.50
5	397220005	M350S-18-05-3			.74	18.9	.551	14.00
6	397220006	M350S-18-06-3			.88	22.4	.689	17.50
7	397220007	M350S-18-07-3			1.02	25.9	.827	21.00
8	397220008	M350S-18-08-3			1.16	29.4	.965	24.50
9	397220009	M350S-18-09-3			1.30	32.9	1.102	28.00
10	397220010	M350S-18-10-3	397220110	M350S-18-10-1	1.43	36.4	1.240	31.50
11	397220011	M350S-18-11-3			1.57	39.9	1.378	35.00
12	397220012	M350S-18-12-3	397220112	M350S-18-12-1	1.71	43.4	1.516	38.50
13	**	M350S-18-13-3			1.85	46.9	1.654	42.00
14	**	M350S-18-14-3			1.98	50.4	1.791	45.50
15	**	M350S-18-15-3			2.12	53.9	1.929	49.00
16	**	M350S-18-16-3			2.26	57.4	2.067	52.50
17	**	M350S-18-17-3			2.40	60.9	2.205	56.00
18	**	M350S-18-18-3			2.54	64.4	2.343	59.50
19	**	M350S-18-19-3			2.67	67.9	2.480	63.00
20	**	M350S-18-20-3			2.81	71.4	2.618	66.50

REF. LAST 2 DIGITS OF PART NUMBER EQUALS NUMBER OF POLES



\*\* CONTACT FACTORY FOR ADDITIONAL LENGTHS AND COLORS

SPECIFICATIONS

- MATERIAL:
  - A BODY: PA66, UL 94V-0
  - B TERMINALS: BRASS, TIN PLATED
  - C COVER: PA66, UL 94V-0
- RATING: 300V, 8A
- INSULATION RESISTANCE: DC 500V, 500MΩ
- DIELECTRIC WITHSTAND: AC 2000V / 1 MINUTE
- OPERATING TEMPERATURE: -40°C TO +105°C
- MAX SOLDERING TEMPERATURE: +260°C FOR 5 SEC.
- MATES WITH TERMINAL PLUG SERIES: 39500, 39503
- DIMS SHOWN ARE FOR REFERENCE ONLY

TOLERANCES			
MM	TOL	INCH	TOL
0-6	±0.25	0-.24	±.010
>6-30	±0.40	.24-1.18	±.016
>30-120	±0.50	1.18-4.76	±.020
>120	±0.80	>4.76	±.031

REVISED DOC TOL EC NO.: ICG2017-0881 DRWN: ABENJAMI CHKD: --- APPR: BRUPERT 4/6/17 2014/10/16 DESCRIPTION REV	QUALITY SYMBOL ▽=0 ▽C=0	GENERAL TOLERANCES (UNLESS SPECIFIED) mm INCH 4 PLACES ±--- ±--- 3 PLACES ±--- ±--- 2 PLACES ±--- ±--- 1 PLACE ±--- ±--- ANGULAR ±---°	DIMENSION STYLE IN/MM DRAWN BY DATE RSTONE 2014/01/21 CHECKED BY DATE G. FARNS APPROVED BY DATE JFMURPHY 2014/10/16	SCALE --- DESIGN UNITS METRIC THIRD ANGLE PROJECTION	TITLE 3.50MM EURO HEADER RIGHT ANGLE DUAL ROW
	DRAFT WHERE APPLICABLE MUST REMAIN WITHIN DIMENSIONS		MATERIAL NO. SEE CHART SIZE C	MOLEX INCORPORATED DOCUMENT NO. SD-39722-001 SHEET NO. 1 OF 1	
	THIS DRAWING CONTAINS INFORMATION THAT IS PROPRIETARY TO MOLEX INCORPORATED AND SHOULD NOT BE USED WITHOUT WRITTEN PERMISSION				