



Chipsmall Limited consists of a professional team with an average of over 10 year of expertise in the distribution of electronic components. Based in Hongkong, we have already established firm and mutual-benefit business relationships with customers from,Europe,America and south Asia,supplying obsolete and hard-to-find components to meet their specific needs.

With the principle of "Quality Parts,Customers Priority,Honest Operation,and Considerate Service",our business mainly focus on the distribution of electronic components. Line cards we deal with include Microchip,ALPS,ROHM,Xilinx,Pulse,ON,Everlight and Freescale. Main products comprise IC,Modules,Potentiometer,IC Socket,Relay,Connector.Our parts cover such applications as commercial,industrial, and automotives areas.

We are looking forward to setting up business relationship with you and hope to provide you with the best service and solution. Let us make a better world for our industry!



Contact us

Tel: +86-755-8981 8866 Fax: +86-755-8427 6832

Email & Skype: info@chipsmall.com Web: www.chipsmall.com

Address: A1208, Overseas Decoration Building, #122 Zhenhua RD., Futian, Shenzhen, China



F

E

D

C

B

A

F

E

D

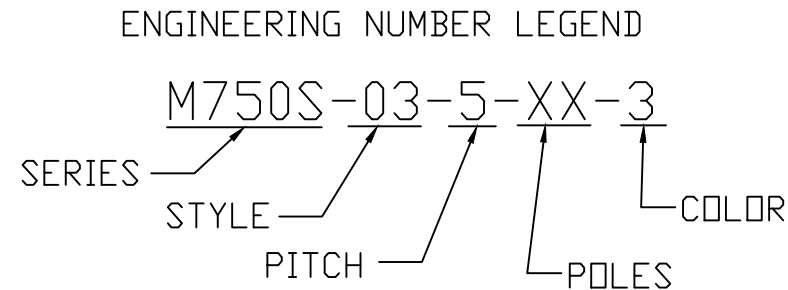
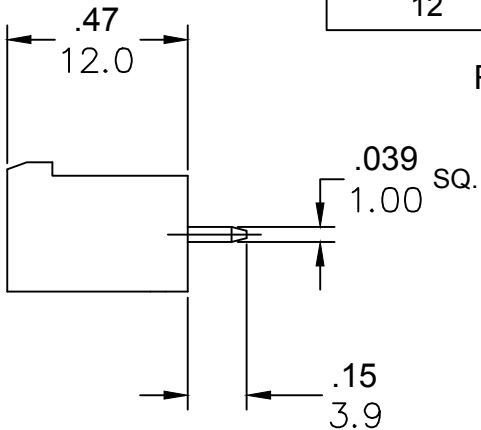
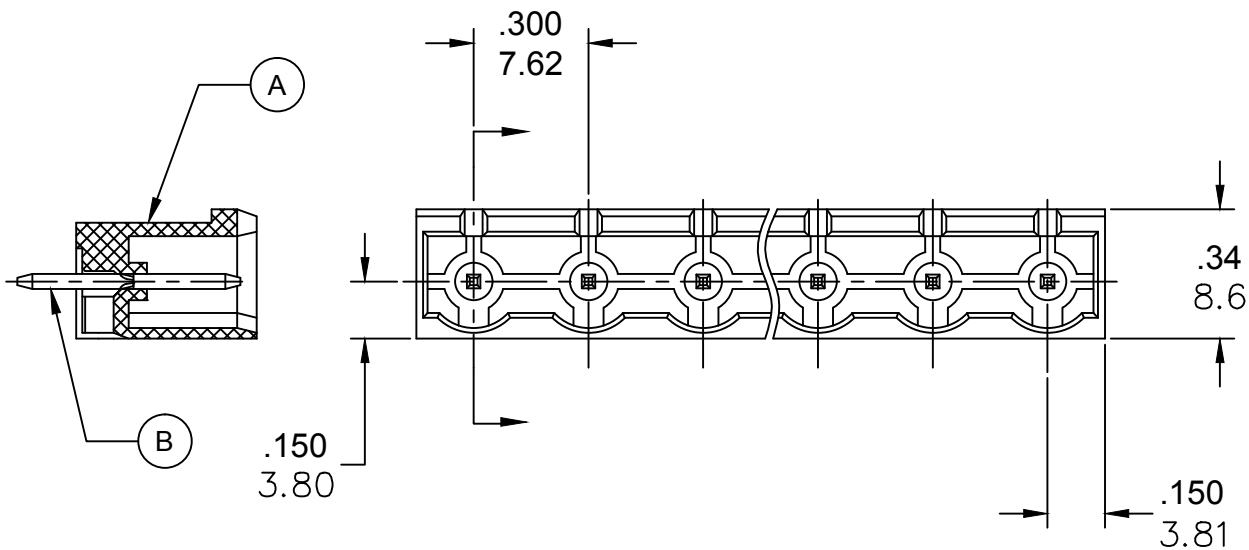
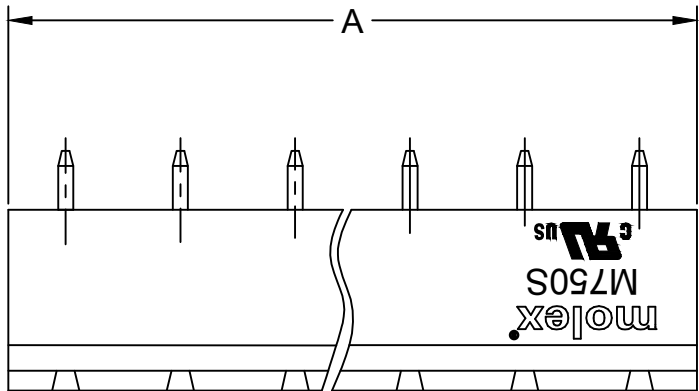
C

B

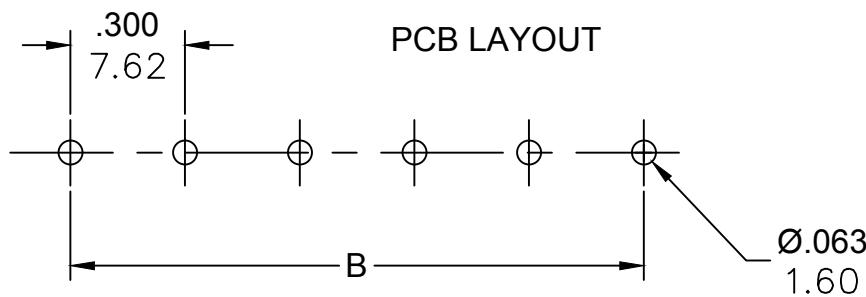
A

SPECIFICATIONS:

1. MATERIAL:
- A. BODY: PA66, UL94 V-0
 - B. TERMINAL: BRASS, TIN PLATED
2. RATING: 15A AT 51-150V, 10A AT 151 TO 300V
3. OPERATING TEMPERATURE: -40°C + 105°C
4. DIELECTRIC VOLTAGE WITHSTAND: AC 2500V FOR 1 MINUTE.
5. INSULATION RESISTANCE: DC 500V, 500MΩ.
6. RATED IMPULSE VOLTAGE: 4000V, PLUS AND MINUS 5 TIMES EACH.
7. MAX. SOLDERING TEMPERATURE: +260°C FOR 5 SEC.
8. MATES WITH TERMINAL PLUG SERIES: 39704
9. DIMS SHOWN ARE FOR REFERENCE ONLY



CONTACT FACTORY FOR OPTIONAL COLORS



TOLERANCES			
MM	TOL	INCH	TOL
0-6	±0.25	0-.24	±.010
>6-30	±0.40	.24-1.18	±.016
>30-120	±0.50	1.18-4.76	±.020
>120	±0.80	>4.76	±.031

REVISED DOC TOL EC NO: IPG2017-0881 DRWN: ABENJAMI CHKD: --- APPR: BRUPERT 2014/10/16	DESCRIPTION REV	QUALITY SYMBOLS <div>▽=0</div> <div>▽C=0</div>	GENERAL TOLERANCES (UNLESS SPECIFIED)			DIMENSION STYLE IN/MM		SCALE ---	DESIGN UNITS METRIC	THIRD ANGLE PROJECTION			
				mm	INCH	DRAWN BY RSTONE	DATE 2014/01/23	TITLE 7.62MM EURO HEADER VERTICAL, CLOSED END ----					
			4 PLACES	±---	±---	CHECKED BY G. FARNS	DATE ----						
			3 PLACES	±---	±---	APPROVED BY JFMURPHY		DATE 2014/10/16	molex MOLEX INCORPORATED				
			2 PLACES	±---	±---								
			1 PLACE	±---	±---	MATERIAL NO. SEE CHART		DOCUMENT NO. SD-39724-001		SHEET NO. 1 OF 1			
			ANGULAR ±---°			DRAFT WHERE APPLICABLE MUST REMAIN WITHIN DIMENSIONS		THIS DRAWING CONTAINS INFORMATION THAT IS PROPRIETARY TO MOLEX INCORPORATED AND SHOULD NOT BE USED WITHOUT WRITTEN PERMISSION					

PART NUMBER DATA							
CIRCUITS	PART NUMBER	ENGINEERING NUMBER	COLOR	A IN mm		B IN mm	
2	397240002	M750S-03-5-02-3	GREEN	.60	15.2	.300	7.62
3	397240003	M750S-03-5-03-3	GREEN	.90	22.9	.600	15.24
4	397240004	M750S-03-5-04-3	GREEN	1.20	30.5	.900	22.86
5	397240005	M750S-03-5-05-3	GREEN	1.50	38.1	1.200	30.48
6	397240006	M750S-03-5-06-3	GREEN	1.80	45.7	1.500	38.10
7	397240007	M750S-03-5-07-3	GREEN	2.10	53.3	1.800	45.72
8	397240008	M750S-03-5-08-3	GREEN	2.40	61.0	2.100	53.34
9	397240009	M750S-03-5-09-3	GREEN	2.70	68.6	2.400	60.96
10	397240010	M750S-03-5-10-3	GREEN	3.00	76.2	2.700	68.58
11	397240011	M750S-03-5-11-3	GREEN	3.30	83.8	3.000	76.20
12	397240012	M750S-03-5-12-3	GREEN	3.60	91.4	3.300	83.82

REF. LAST 2 DIGITS OF PART NUMBER EQUALS NUMBER OF POLES