



Chipsmall Limited consists of a professional team with an average of over 10 year of expertise in the distribution of electronic components. Based in Hongkong, we have already established firm and mutual-benefit business relationships with customers from,Europe,America and south Asia,supplying obsolete and hard-to-find components to meet their specific needs.

With the principle of “Quality Parts,Customers Priority,Honest Operation,and Considerate Service”,our business mainly focus on the distribution of electronic components. Line cards we deal with include Microchip,ALPS,ROHM,Xilinx,Pulse,ON,Everlight and Freescale. Main products comprise IC,Modules,Potentiometer,IC Socket,Relay,Connector.Our parts cover such applications as commercial,industrial, and automotives areas.

We are looking forward to setting up business relationship with you and hope to provide you with the best service and solution. Let us make a better world for our industry!



Contact us

Tel: +86-755-8981 8866 Fax: +86-755-8427 6832

Email & Skype: info@chipsmall.com Web: www.chipsmall.com

Address: A1208, Overseas Decoration Building, #122 Zhenhua RD., Futian, Shenzhen, China



J

I

H

G

F

E

D

C

B

A

13

12

11

10

9

8

7

6

5

4

3

2

1

J

I

H

G

F

E

D

C

B

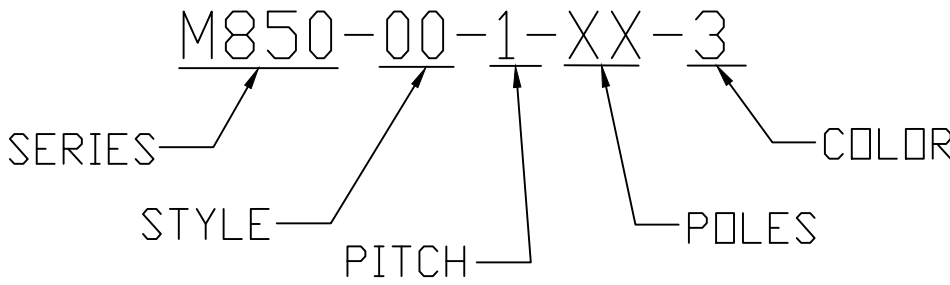
A

PART NUMBER DATA

CIRCUITS	PART NUMBER	ENGINEERING NUMBER	COLOR	A IN mm		B IN mm	
1	397430001	M850-00-1-01-3	GREEN	.20	5.0	.000	.00
2	397430002	M850-00-1-02-3	GREEN	.39	10.0	.197	5.00
3	397430003	M850-00-1-03-3	GREEN	.59	15.0	.394	10.00
4	397430004	M850-00-1-04-3	GREEN	.79	20.0	.591	15.00
5	397430005	M850-00-1-05-3	GREEN	.98	25.0	.787	20.00
6	397430006	M850-00-1-06-3	GREEN	1.18	30.0	.984	25.00
7	397430007	M850-00-1-07-3	GREEN	1.38	35.0	1.181	30.00
8	397430008	M850-00-1-08-3	GREEN	1.57	40.0	1.378	35.00
9	397430009	M850-00-1-09-3	GREEN	1.77	45.0	1.575	40.00
10	397430010	M850-00-1-10-3	GREEN	1.97	50.0	1.772	45.00
11	397430011	M850-00-1-11-3	GREEN	2.17	55.0	1.969	50.00
12	397430012	M850-00-1-12-3	GREEN	2.36	60.0	2.165	55.00
13		M850-00-1-13-3	GREEN	2.56	65.0	2.362	60.00
14		M850-00-1-14-3	GREEN	2.76	70.0	2.559	65.00
15		M850-00-1-15-3	GREEN	2.95	75.0	2.756	70.00
16		M850-00-1-16-3	GREEN	3.15	80.0	2.953	75.00
17		M850-00-1-17-3	GREEN	3.35	85.0	3.150	80.00
18		M850-00-1-18-3	GREEN	3.54	90.0	3.346	85.00
19		M850-00-1-19-3	GREEN	3.74	95.0	3.543	90.00
20		M850-00-1-20-3	GREEN	3.94	100.0	3.740	95.00
21		M850-00-1-21-3	GREEN	4.13	105.0	3.937	100.00
22		M850-00-1-22-3	GREEN	4.33	110.0	4.134	105.00
23		M850-00-1-23-3	GREEN	4.53	115.0	4.331	110.00
24		M850-00-1-24-3	GREEN	4.72	120.0	4.528	115.00

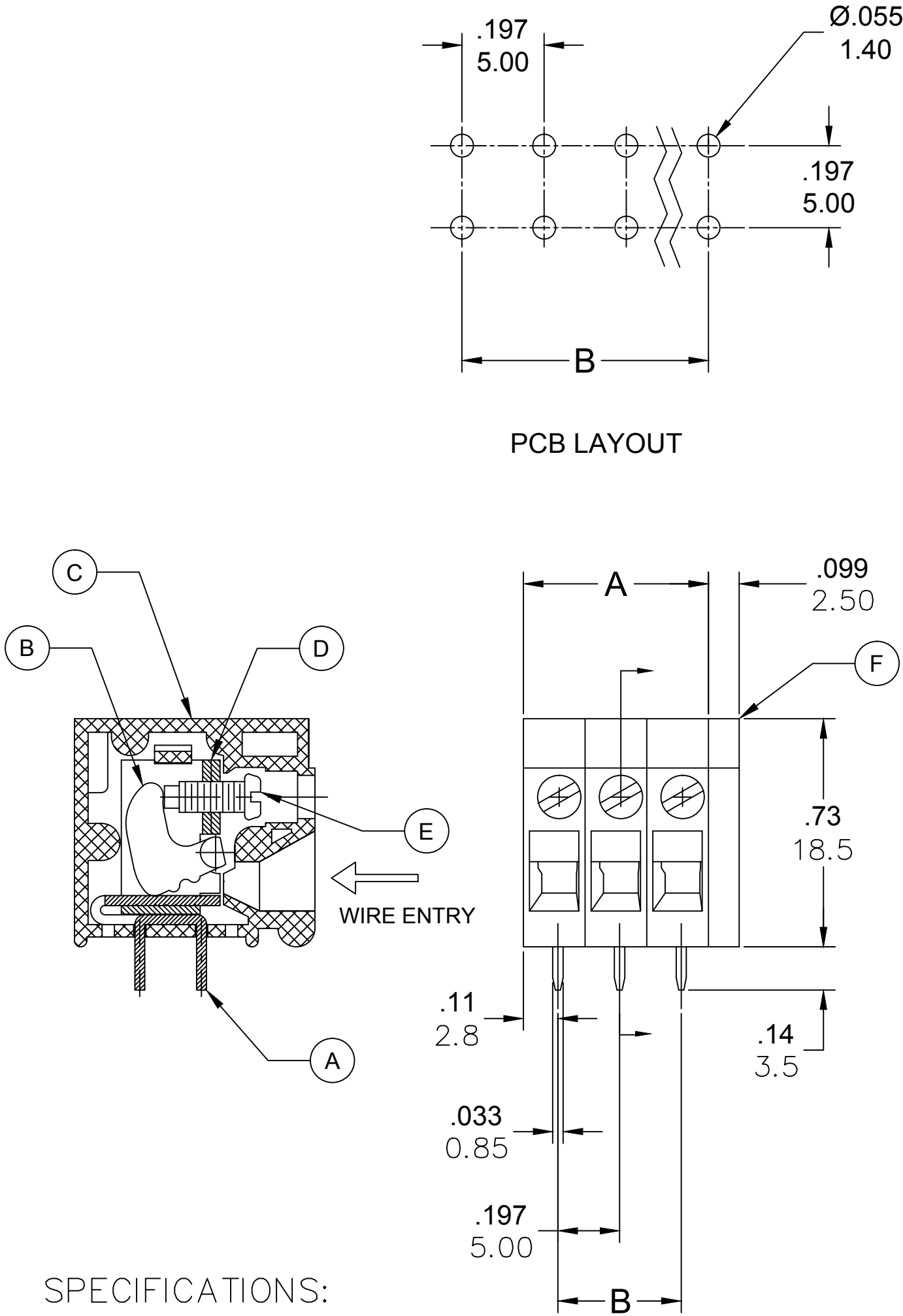
REF. LAST 2 DIGITS OF PART NUMBER EQUAL CIRCUIT COUNT

ENGINEERING NUMBER LEGEND



CONTACT FACTORY FOR OPTIONAL COLORS

PCB LAYOUT



SPECIFICATIONS:

- MATERIAL:
 - A. TERMINAL: BRASS, TIN PLATED
 - B. CAM: STEEL, ZINC PLATED
 - C. BODY: PA66, UL94 V-0
 - D. CAGE: STEEL, ZINC PLATED
 - E. SCREW: M2.5, STEEL, ZINC PLATED
 - F. COVER: PA66, UL94 V-0
- RATING: 300V, 20A
- MAX TORQUE: 4.5 LBF.IN
- WIRE RANGE: 30-12 AWG
- WIRE STRIP: .39 (10.0MM)
- DIELECTRIC VOLTAGE WITHSTAND: AC 2500V FOR 1 MINUTE
- INSULATION RESISTANCE: DC 500V, 500MΩ
- RATED IMPULSE VOLTAGE: 4000V PLUS AND MINUS 5 TIMES EACH
- OPERATING TEMPERATURE: -40°C TO +105°C
- MAX SOLDERING TEMP: +260°C (500°F) FOR 5 SECONDS
- DIMS SHOWN ARE FOR REFERENCE ONLY

TOLERANCES			
MM	TOL	INCH	TOL
0-6	±0.25	0-.24	±.010
>6-30	±0.40	.24-1.18	±.016
>30-120	±0.50	1.18-4.76	±.020
>120	±0.80	>4.76	±.031

REVISED DOC TOL EC NO: IPG2017-0881 DRWN: ABENUJAMI CHK'D: APPR: BRUPERT 2014/10/16	DESCRIPTION REV	QUALITY SYMBOL <div>▽=0</div> <div>▽C=0</div>	GENERAL TOLERANCES (UNLESS SPECIFIED)		DIMENSION STYLE IN/MM		SCALE ---	DESIGN UNITS METRIC	THIRD ANGLE PROJECTION		
				mm	INCH	DRAWN BY RSTONE		DATE 2014/06/30	TITLE TERM BLOCK, HORIZONTAL MODULAR, BOX 5.0MM ----- <div>molex</div> MOLEX INCORPORATED		
			4 PLACES	±---	±---	CHECKED BY G FARNSW		DATE ----			
			3 PLACES	±---	±---	APPROVED BY JFMURPHY		DATE 2014/10/16			
			2 PLACES	±---	±---						
			1 PLACE	±---	±---				DOCUMENT NO. SD-39743-001		SHEET NO. 1 OF 1
			ANGULAR ±---°			DRAFT WHERE APPLICABLE MUST REMAIN WITHIN DIMENSIONS		MATERIAL NO. SEE CHART			
SIZE C		THIS DRAWING CONTAINS INFORMATION THAT IS PROPRIETARY TO MOLEX INCORPORATED AND SHOULD NOT BE USED WITHOUT WRITTEN PERMISSION									