



Chipsmall Limited consists of a professional team with an average of over 10 year of expertise in the distribution of electronic components. Based in Hongkong, we have already established firm and mutual-benefit business relationships with customers from,Europe,America and south Asia,supplying obsolete and hard-to-find components to meet their specific needs.

With the principle of “Quality Parts,Customers Priority,Honest Operation,and Considerate Service”,our business mainly focus on the distribution of electronic components. Line cards we deal with include Microchip,ALPS,ROHM,Xilinx,Pulse,ON,Everlight and Freescale. Main products comprise IC,Modules,Potentiometer,IC Socket,Relay,Connector.Our parts cover such applications as commercial,industrial, and automotives areas.

We are looking forward to setting up business relationship with you and hope to provide you with the best service and solution. Let us make a better world for our industry!



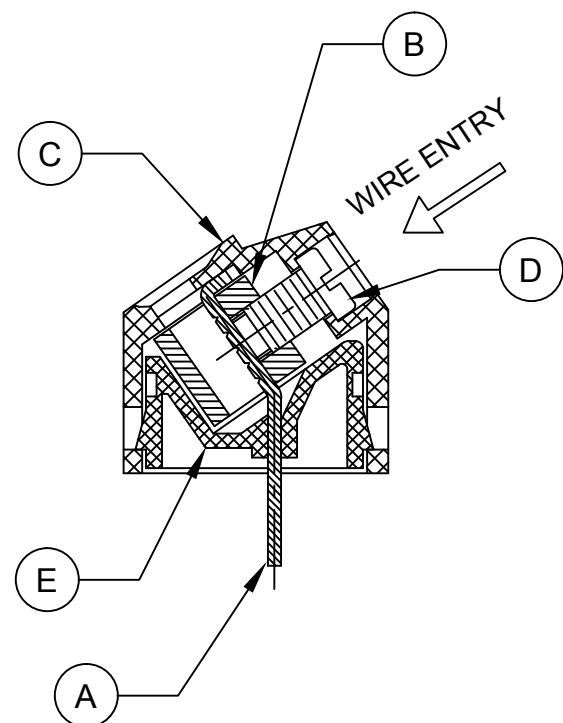
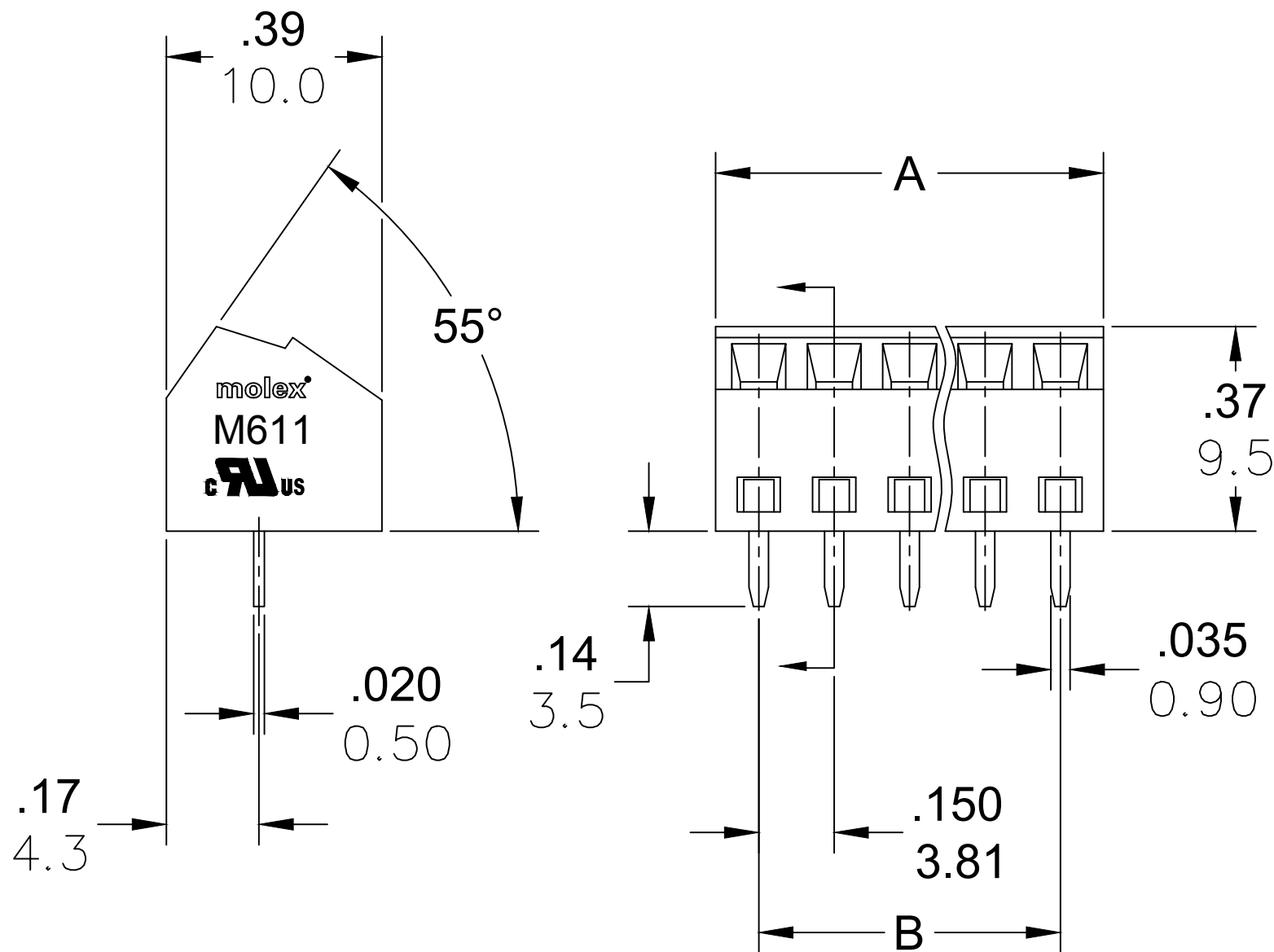
Contact us

Tel: +86-755-8981 8866 Fax: +86-755-8427 6832

Email & Skype: info@chipsmall.com Web: www.chipsmall.com

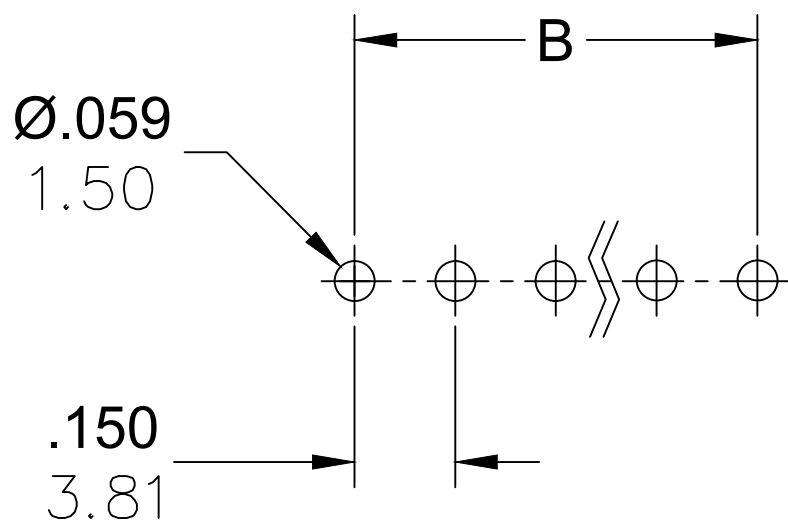
Address: A1208, Overseas Decoration Building, #122 Zhenhua RD., Futian, Shenzhen, China





PART NUMBER DATA							
CIRCUITS	PART NUMBER	ENGINEERING NUMBER	COLOR	A IN mm		B IN mm	
2	397480002	M611-02-02-3	GREEN	.30	7.6	.150	3.81
3	397480003	M611-02-03-3	GREEN	.45	11.4	.300	7.62
4	397480004	M611-02-04-3	GREEN	.60	15.2	.450	11.43
5	397480005	M611-02-05-3	GREEN	.75	19.0	.600	15.24
6	397480006	M611-02-06-3	GREEN	.90	22.9	.750	19.05
7	397480007	M611-02-07-3	GREEN	1.05	26.7	.900	22.86
8	397480008	M611-02-08-3	GREEN	1.20	30.5	1.050	26.67
9	397480009	M611-02-09-3	GREEN	1.35	34.3	1.200	30.48
10	397480010	M611-02-10-3	GREEN	1.50	38.1	1.350	34.29
11	397480011	M611-02-11-3	GREEN	1.65	41.9	1.500	38.10
12	397480012	M611-02-12-3	GREEN	1.80	45.7	1.650	41.91
13		M611-02-13-3	GREEN	1.95	49.5	1.800	45.72
14		M611-02-14-3	GREEN	2.10	53.3	1.950	49.53
15		M611-02-15-3	GREEN	2.25	57.1	2.100	53.34
16		M611-02-16-3	GREEN	2.40	61.0	2.250	57.15

REF. LAST 2 DIGITS OF PART NUMBER EQUAL CIRCUIT COUNT

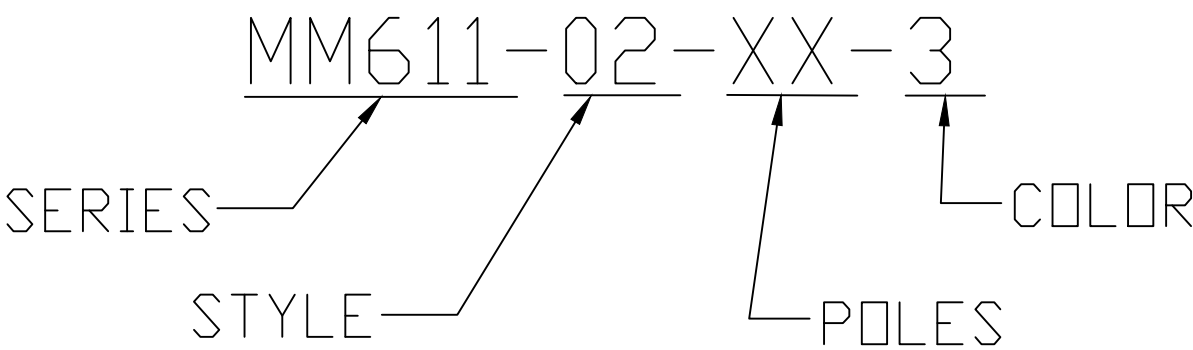


PCB LAYOUT

SPECIFICATIONS:

- MATERIAL:
 - A. TERMINAL: BRASS TIN PLATED
 - B. CAGE: BRASS NICKEL PLATED
 - C. BODY: PA66 UL94 V-0
 - D. SCREW: M2 STEEL ZINC PLATED
 - E. COVER: PA66 UL94 V-0
- RATING: 300V, 10A
- MAX TORQUE: 2.0 LB-IN.
- WIRE RANGE: 30-16 AWG
- WIRE STRIP: .20 IN (5.0mm)
- DIELECTRIC VOLTAGE WITHSTAND: AC 2000V FOR 1 MINUTE
- INSULATION RESISTANCE: DC 500V, 500MΩ
- RATED IMPULSE VOLTAGE: 4000V PLUS AND MINUS 5 TIMES EACH
- OPERATING TEMPERATURE: -40°C TO +105°C
- MAX. SOLDERING TEMP: 260°C (500°F) FOR 5 SECONDS
- DIMS SHOWN ARE FOR REFERENCE ONLY

ENGINEERING NUMBER LEGEND



CONTACT FACTORY FOR OPTIONAL COLORS

TOLERANCES				GENERAL TOLERANCES (UNLESS SPECIFIED)		DIMENSION STYLE	SCALE	DESIGN UNITS	THIRD ANGLE PROJECTION	
MM	TOL	INCH	TOL			IN/MM	---	METRIC		
0-6	±0.25	0-.24	±.010			DRAWN BY DATE				
>6-30	±0.40	.24-1.18	±.016			RSTONE 2014/05/08				
>30-120	±0.50	1.18-4.76	±.020			CHECKED BY DATE				
>120	±0.80	>4.76	±.031			G FARNSW				
						APPROVED BY DATE				
						JFMURPHY 2014/10/16				
						MATERIAL NO.				
						SEE CHART				
						SIZE				
						C				

REVISED DOC TOL		4/6/17		1		2014/10/16		DESCRIPTION		REV	
EC NO: IPG2017-0881		DRWN: ABENJAMI		CH'KD: ---		APPR: BRUPERT					
A1											

QUALITY SYMBOL		=0		=0	

DRAFT WHERE APPLICABLE MUST REMAIN WITHIN DIMENSIONS		MATERIAL NO.		DOCUMENT NO.		SHEET NO.	
		SEE CHART		SD-39748-001		1 OF 1	

EURO TERMINAL BLOCK		55 DEGREE 3.81MM		MOLEX INCORPORATED		THIS DRAWING CONTAINS INFORMATION THAT IS PROPRIETARY TO MOLEX INCORPORATED AND SHOULD NOT BE USED WITHOUT WRITTEN PERMISSION	
---------------------	--	------------------	--	--------------------	--	---	--