



Chipsmall Limited consists of a professional team with an average of over 10 year of expertise in the distribution of electronic components. Based in Hongkong, we have already established firm and mutual-benefit business relationships with customers from,Europe,America and south Asia,supplying obsolete and hard-to-find components to meet their specific needs.

With the principle of "Quality Parts,Customers Priority,Honest Operation,and Considerate Service",our business mainly focus on the distribution of electronic components. Line cards we deal with include Microchip,ALPS,ROHM,Xilinx,Pulse,ON,Everlight and Freescale. Main products comprise IC,Modules,Potentiometer,IC Socket,Relay,Connector.Our parts cover such applications as commercial,industrial, and automotives areas.

We are looking forward to setting up business relationship with you and hope to provide you with the best service and solution. Let us make a better world for our industry!



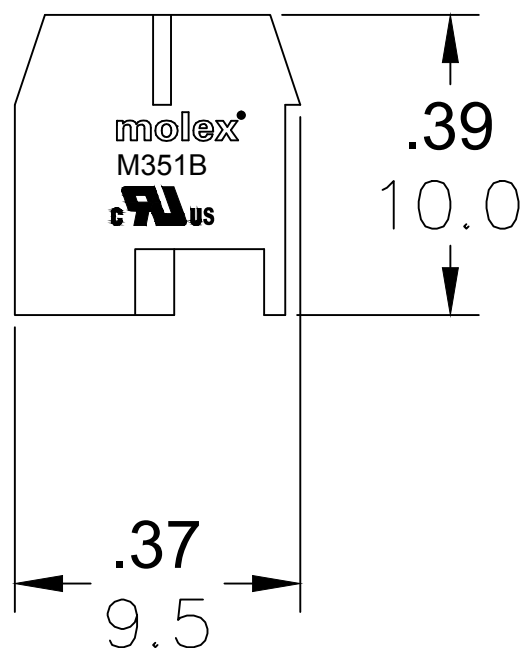
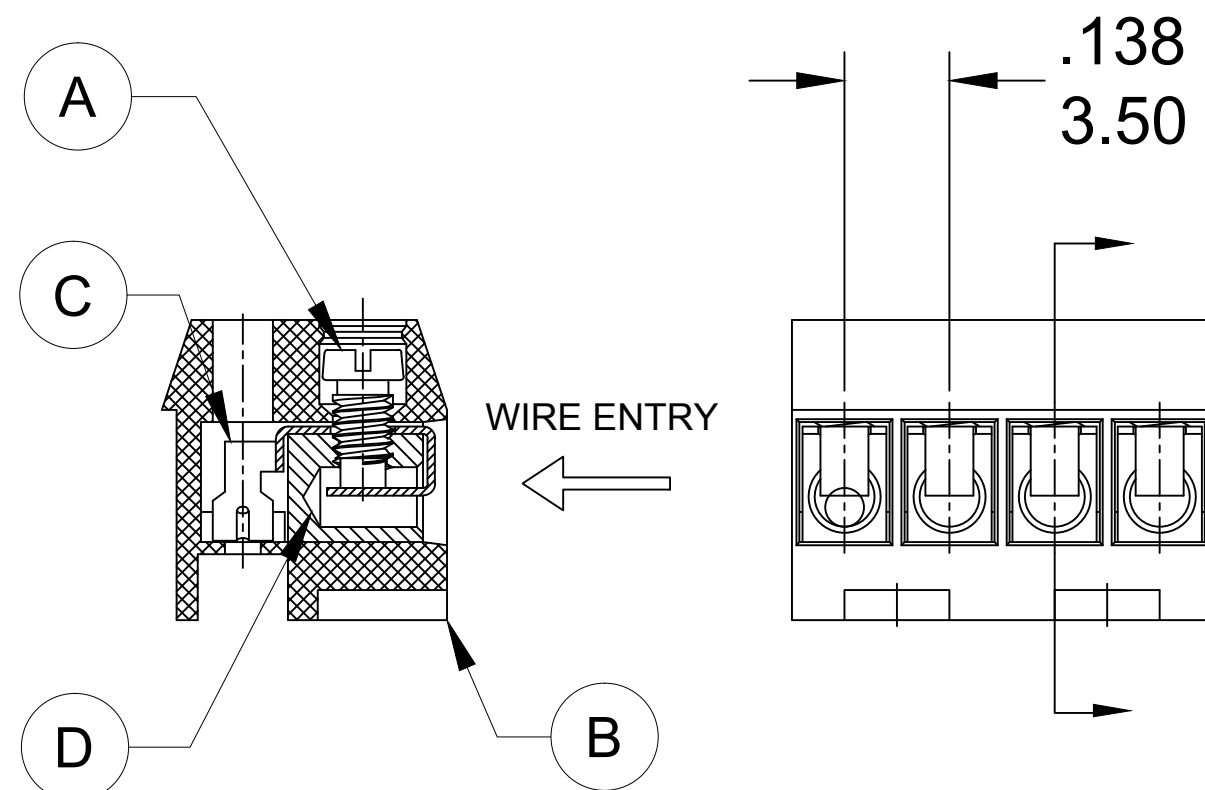
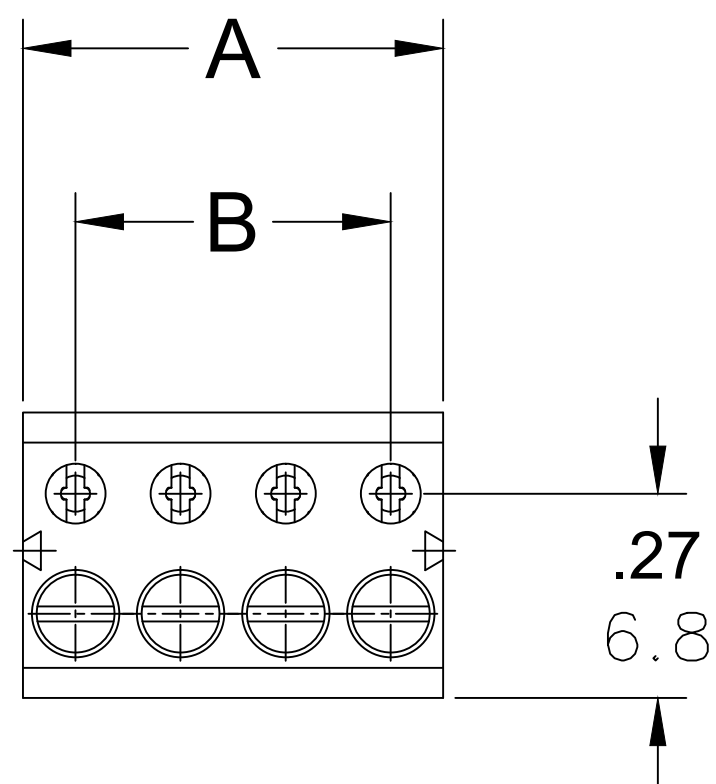
Contact us

Tel: +86-755-8981 8866 Fax: +86-755-8427 6832

Email & Skype: info@chipsmall.com Web: www.chipsmall.com

Address: A1208, Overseas Decoration Building, #122 Zhenhua RD., Futian, Shenzhen, China

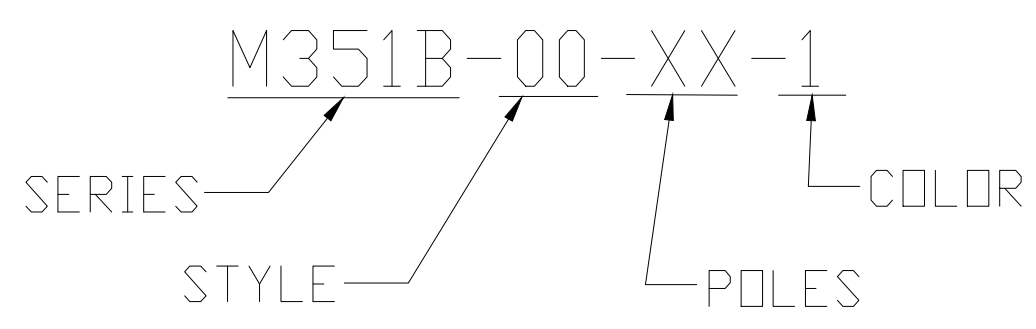




PART NUMBER DATA							
CIRCUITS	PART NUMBER	ENGINEERING NUMBER	COLOR	A IN mm		B IN mm	
2	397500002	M351B-00-02-1	BLACK	.28	7.0	.138	3.50
3	397500003	M351B-00-03-1	BLACK	.41	10.5	.276	7.00
4	397500004	M351B-00-04-1	BLACK	.55	14.0	.413	10.50
5	397500005	M351B-00-05-1	BLACK	.69	17.5	.551	14.00
6	397500006	M351B-00-06-1	BLACK	.83	21.0	.689	17.50
7	397500007	M351B-00-07-1	BLACK	.96	24.5	.827	21.00
8	397500008	M351B-00-08-1	BLACK	1.10	28.0	.965	24.50
9	397500009	M351B-00-09-1	BLACK	1.24	31.5	1.102	28.00
10	397500010	M351B-00-10-1	BLACK	1.38	35.0	1.240	31.50
11	397500011	M351B-00-11-1	BLACK	1.52	38.5	1.378	35.00
12	397500012	M351B-00-12-1	BLACK	1.65	42.0	1.516	38.50
13		M351B-00-13-1	BLACK	1.79	45.5	1.654	42.00
14		M351B-00-14-1	BLACK	1.93	49.0	1.791	45.50
15		M351B-00-15-1	BLACK	2.07	52.5	1.929	49.00
16		M351B-00-16-1	BLACK	2.20	56.0	2.067	52.50
17		M351B-00-17-1	BLACK	2.34	59.5	2.205	56.00
18		M351B-00-18-1	BLACK	2.48	63.0	2.343	59.50

REF. THE LAST 2 DIGITS OF THE PART NUMBER EQUAL CIRCUIT COUNT

ENGINEERING NUMBER LEGEND



CONTACT FACTORY FOR OPTIONAL COLORS

SPECIFICATIONS

- MATERIAL:
 - A. SCREW: M2 STEEL, NI PLATED
 - B. BODY: PA66, UL94V-0
 - C. CONTACT: PHOS-BRONZE
 - D. CAGE: BRASS, NI PLATED
- WIRE SIZE: 16 TO 28AWG
- RATING: 125V, 8A
- MAX TORQUE: 2.5 IN. LBS.
- WIRE STRIP LENGTH: .16 IN. (4.0mm)
- OPERATING TEMPERATURE: -40° C TO +105° C
- DIMS SHOWN ARE FOR REFERENCE ONLY

TOLERANCES			
MM	TOL	INCH	TOL
0-6	±0.25	0-.24	±.010
>6-30	±0.40	.24-1.18	±.016
>30-120	±0.50	1.18-4.76	±.020
>120	±0.80	>4.76	±.031

REVISED DOC TOL EC NO.: ICG2017-0881 DRWN: ABENJAMI CHKD: --- APPR: BRUPERT 2014/10/16 4/6/17	QUALITY SYMBOL	GENERAL TOLERANCES (UNLESS SPECIFIED)	DIMENSION STYLE IN/MM	SCALE	DESIGN UNITS METRIC	THIRD ANGLE PROJECTION
	▽=0	4 PLACES ±--- ±---	DRAWN BY RSTONE DATE 2014/07/14	---		
	∇=0	3 PLACES ±--- ±---	CHECKED BY G FARNSW DATE ---	TITLE TERMINAL BLOCK PLUGGABLE HORIZ. 3.5MM		
		2 PLACES ±--- ±---	APPROVED BY JFMURPHY DATE 2014/10/16	MOLEX INCORPORATED		
		1 PLACE ±--- ±---	MATERIAL NO. SEE CHART	DOCUMENT NO. SD-39750-001		SHEET NO. 1 OF 1
A1		DRAFT WHERE APPLICABLE MUST REMAIN WITHIN DIMENSIONS	THIS DRAWING CONTAINS INFORMATION THAT IS PROPRIETARY TO MOLEX INCORPORATED AND SHOULD NOT BE USED WITHOUT WRITTEN PERMISSION			