



Chipsmall Limited consists of a professional team with an average of over 10 year of expertise in the distribution of electronic components. Based in Hongkong, we have already established firm and mutual-benefit business relationships with customers from,Europe,America and south Asia,supplying obsolete and hard-to-find components to meet their specific needs.

With the principle of "Quality Parts,Customers Priority,Honest Operation,and Considerate Service",our business mainly focus on the distribution of electronic components. Line cards we deal with include Microchip,ALPS,ROHM,Xilinx,Pulse,ON,Everlight and Freescale. Main products comprise IC,Modules,Potentiometer,IC Socket,Relay,Connector.Our parts cover such applications as commercial,industrial, and automotives areas.

We are looking forward to setting up business relationship with you and hope to provide you with the best service and solution. Let us make a better world for our industry!



## Contact us

Tel: +86-755-8981 8866 Fax: +86-755-8427 6832

Email & Skype: info@chipsmall.com Web: www.chipsmall.com

Address: A1208, Overseas Decoration Building, #122 Zhenhua RD., Futian, Shenzhen, China



10

9

8

7

6

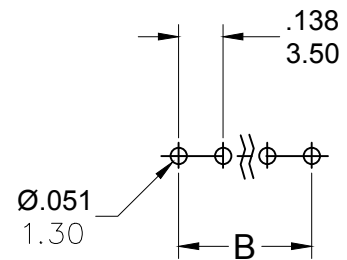
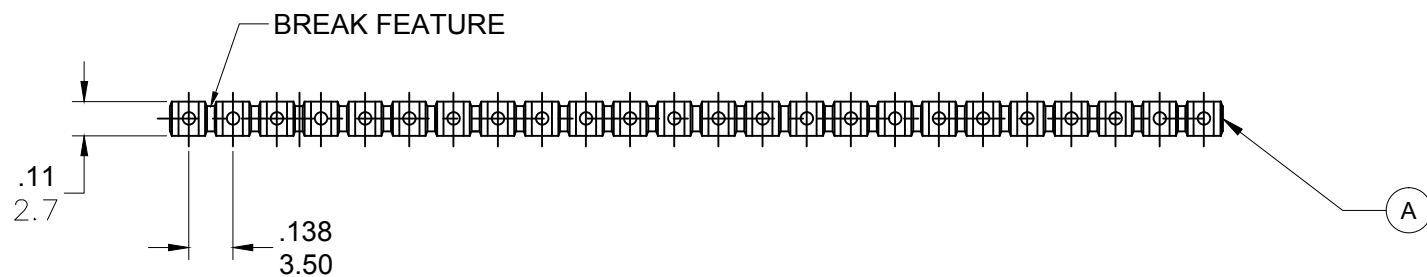
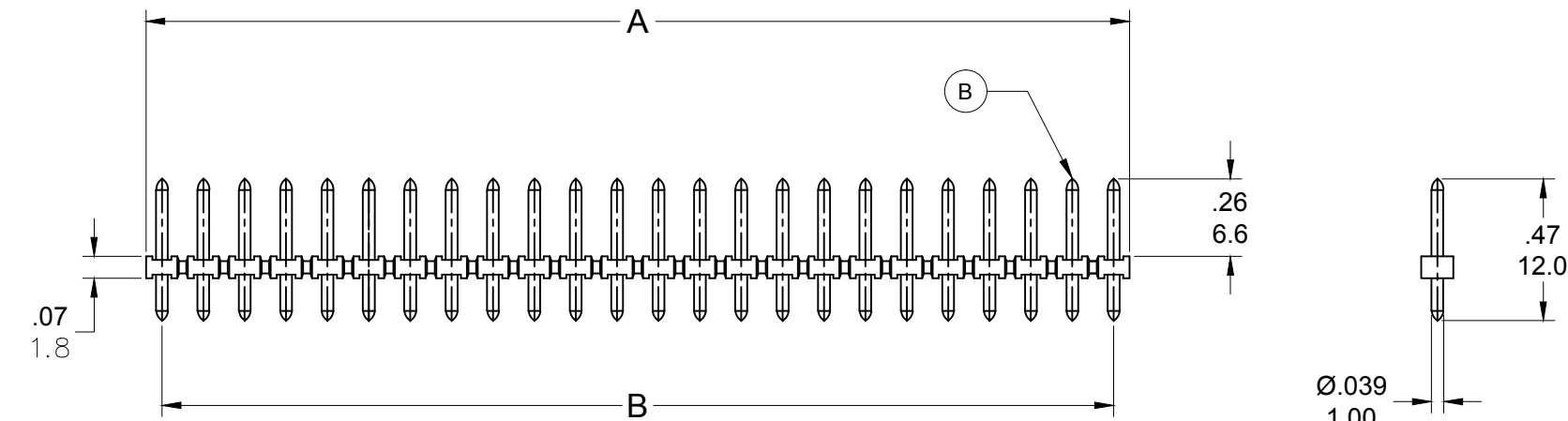
5

4

3

2

1

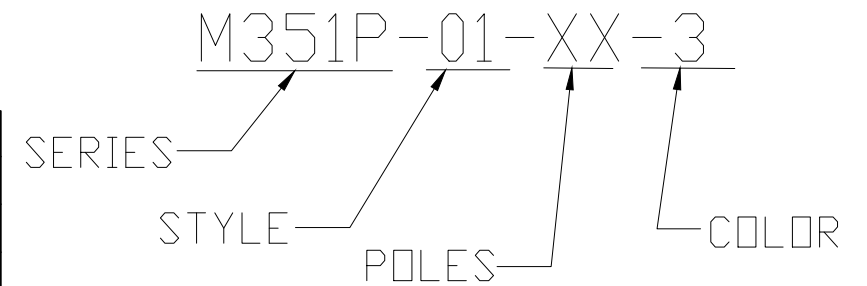


PCB LAYOUT

PART NUMBER DATA							
CIRCUITS	PART NUMBER	ENGINEERING NUMBER	COLOR	A IN mm		B IN mm	
2	397520002	M351P-01-02-3	GREEN	.26	6.5	.138	3.50
3	397520003	M351P-01-03-3	GREEN	.39	10.0	.276	7.00
4	397520004	M351P-01-04-3	GREEN	.53	13.5	.413	10.50
5	397520005	M351P-01-05-3	GREEN	.67	17.0	.551	14.00
6	397520006	M351P-01-06-3	GREEN	.81	20.5	.689	17.50
7	397520007	M351P-01-07-3	GREEN	.94	24.0	.827	21.00
8	397520008	M351P-01-08-3	GREEN	1.08	27.5	.965	24.50
9	397520009	M351P-01-09-3	GREEN	1.22	31.0	1.102	28.00
10	397520010	M351P-01-10-3	GREEN	1.36	34.5	1.240	31.50
11	397520011	M351P-01-11-3	GREEN	1.50	38.0	1.378	35.00
12	397520012	M351P-01-12-3	GREEN	1.63	41.5	1.516	38.50
13		M351P-01-13-3	GREEN	1.77	45.0	1.654	42.00
14		M351P-01-14-3	GREEN	1.91	48.5	1.791	45.50
15		M351P-01-15-3	GREEN	2.05	52.0	1.929	49.00
16		M351P-01-16-3	GREEN	2.18	55.5	2.067	52.50
17		M351P-01-17-3	GREEN	2.32	59.0	2.205	56.00
18		M351P-01-18-3	GREEN	2.46	62.5	2.343	59.50
19		M351P-01-19-3	GREEN	2.60	66.0	2.480	63.00
20		M351P-01-20-3	GREEN	2.74	69.5	2.618	66.50
21		M351P-01-21-3	GREEN	2.87	73.0	2.756	70.00
22		M351P-01-22-3	GREEN	3.01	76.5	2.894	73.50
23		M351P-01-23-3	GREEN	3.15	80.0	3.031	77.00
24		M351P-01-24-3	GREEN	3.29	83.5	3.169	80.50

REF. THE LAST 2 DIGITS OF THE PART NUMBER EQUAL CIRCUIT COUNT

ENGINEERING NUMBER LEGEND



CONTACT FACTORY FOR OPTIONAL COLORS

SPECIFICATIONS

1. MATERIAL:

- A. BODY: PA66, UL94V-0
- B. TERMINAL: BRASS. TIN PLATED

2. RATING: 125V, 8A

3. OPERATING TEMPERATURE: -40°C TO +105° C

4. MAX SOLDERING: 260° C (+500° F) FOR 5 SECONDS

5. DIMS SHOWN ARE FOR REFERENCE ONLY

TOLERANCES			
MM	TOL	INCH	TOL
0-6	±0.25	0-.24	±.010
>6-30	±0.40	.24-1.18	±.016
>30-120	±0.50	1.18-4.76	±.020
>120	±0.80	>4.76	±.031

REVISED DOC TOL EC NO: IPG2017-0881 DRWN: ABENJAMI CHKD: --- APPR: BRUPERT 4/6/17 2014/10/16	QUALITY SYMBOLS ▽=0 ▽C=0	GENERAL TOLERANCES (UNLESS SPECIFIED)		DIMENSION STYLE	SCALE	DESIGN UNITS	THIRD ANGLE PROJECTION	
		mm	INCH	IN/MM	---	METRIC		
		4 PLACES	±---	±---	DRAWN BY	DATE	TITLE	
		3 PLACES	±---	±---	RSTONE	2014/07/25	PIN HEADER-BREAKABLE 3.50MM, VERTICAL	
		2 PLACES	±---	±---	CHECKED BY	DATE		
		1 PLACE	±---	±---	G FARNSW	---		
		ANGULAR ±---°		APPROVED BY	DATE	MOLEX INCORPORATED		
		DRAFT WHERE APPLICABLE MUST REMAIN WITHIN DIMENSIONS		JFMURPHY	2014/10/16	DOCUMENT NO.	SHEET NO.	
2	REV			SEE CHART		SD-39752-001	1 OF 1	
				SIZE	THIS DRAWING CONTAINS INFORMATION THAT IS PROPRIETARY TO MOLEX INCORPORATED AND SHOULD NOT BE USED WITHOUT WRITTEN PERMISSION			
				B				

10

9

8

7

6

5

4

3

2

1