



Chipsmall Limited consists of a professional team with an average of over 10 year of expertise in the distribution of electronic components. Based in Hongkong, we have already established firm and mutual-benefit business relationships with customers from,Europe,America and south Asia,supplying obsolete and hard-to-find components to meet their specific needs.

With the principle of “Quality Parts,Customers Priority,Honest Operation,and Considerate Service”,our business mainly focus on the distribution of electronic components. Line cards we deal with include Microchip,ALPS,ROHM,Xilinx,Pulse,ON,Everlight and Freescale. Main products comprise IC,Modules,Potentiometer,IC Socket,Relay,Connector.Our parts cover such applications as commercial,industrial, and automotives areas.

We are looking forward to setting up business relationship with you and hope to provide you with the best service and solution. Let us make a better world for our industry!



Contact us

Tel: +86-755-8981 8866 Fax: +86-755-8427 6832

Email & Skype: info@chipsmall.com Web: www.chipsmall.com

Address: A1208, Overseas Decoration Building, #122 Zhenhua RD., Futian, Shenzhen, China



10

9

8

7

6

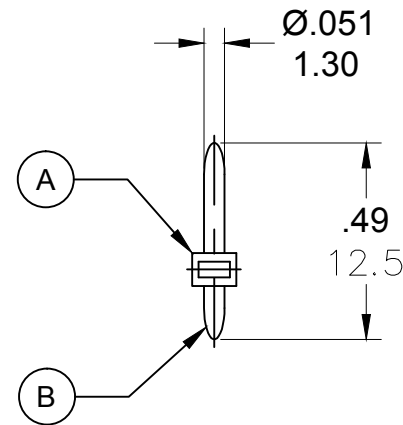
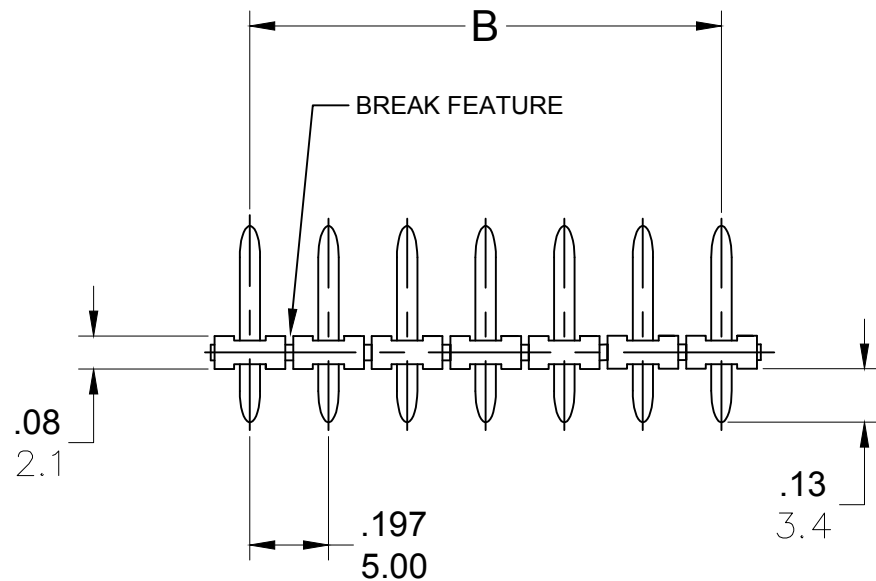
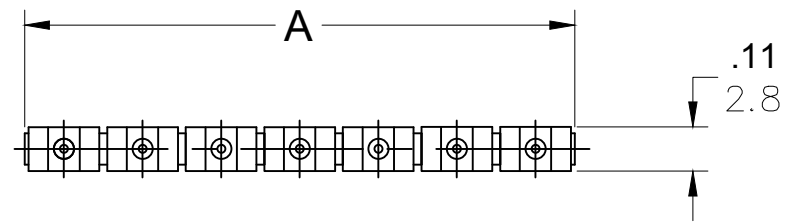
5

4

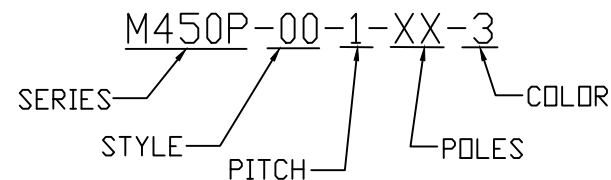
3

2

1

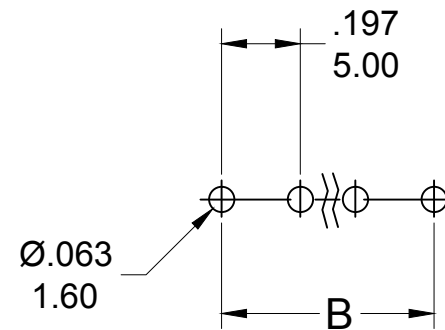


ENGINEERING NUMBER LEGEND



CONTACT FACTORY FOR OPTIONAL COLORS

TOLERANCES			
MM	TOL	INCH	TOL
0-6	±0.25	0-.24	±.010
>6-30	±0.40	.24-1.18	±.016
>30-120	±0.50	1.18-4.76	±.020
>120	±0.80	>4.76	±.031



PCB LAYOUT

SPECIFICATIONS

1. MATERIAL:

A. BODY: PA66, UL94V-0

B. TERMINAL: BRASS. TIN PLATED

2. RATING: 300V, 10A

3. OPERATING TEMPERATURE: -40°C TO +105° C

4. MAX SOLDERING: 260° C (+500° F) FOR 5 SECONDS

5. DIMS SHOWN ARE FOR REFERENCE ONLY

PART NUMBER DATA

CIRCUITS	PART NUMBER	ENGINEERING NUMBER	COLOR	A IN mm		B IN mm	
2	397560002	M450P-00-1-02-3	GREEN	.39	10.0	.197	5.00
3	397560003	M450P-00-1-03-3	GREEN	.59	15.0	.394	10.00
4	397560004	M450P-00-1-04-3	GREEN	.79	20.0	.591	15.00
5	397560005	M450P-00-1-05-3	GREEN	.98	25.0	.787	20.00
6	397560006	M450P-00-1-06-3	GREEN	1.18	30.0	.984	25.00
7	397560007	M450P-00-1-07-3	GREEN	1.38	35.0	1.181	30.00
8	397560008	M450P-00-1-08-3	GREEN	1.57	40.0	1.378	35.00
9	397560009	M450P-00-1-09-3	GREEN	1.77	45.0	1.575	40.00
10	397560010	M450P-00-1-10-3	GREEN	1.97	50.0	1.772	45.00
11	397560011	M450P-00-1-11-3	GREEN	2.17	55.0	1.969	50.00
12	397560012	M450P-00-1-12-3	GREEN	2.36	60.0	2.165	55.00
13		M450P-00-1-13-3	GREEN	2.56	65.0	2.362	60.00
14		M450P-00-1-14-3	GREEN	2.76	70.0	2.559	65.00
15		M450P-00-1-15-3	GREEN	2.95	75.0	2.756	70.00
16		M450P-00-1-16-3	GREEN	3.15	80.0	2.953	75.00
17		M450P-00-1-17-3	GREEN	3.35	85.0	3.150	80.00
18		M450P-00-1-18-3	GREEN	3.54	90.0	3.346	85.00
19		M450P-00-1-19-3	GREEN	3.74	95.0	3.543	90.00
20		M450P-00-1-20-3	GREEN	3.94	100.0	3.740	95.00
21		M450P-00-1-21-3	GREEN	4.13	105.0	3.937	100.00
22		M450P-00-1-22-3	GREEN	4.33	110.0	4.134	105.00
23		M450P-00-1-23-3	GREEN	4.53	115.0	4.331	110.00
24		M450P-00-1-24-3	GREEN	4.72	120.0	4.528	115.00
25		M450P-00-1-25-3	GREEN	4.92	125.0	4.724	120.00
26		M450P-00-1-26-3	GREEN	5.12	130.0	4.921	125.00
27		M450P-00-1-27-3	GREEN	5.31	135.0	5.118	130.00
28		M450P-00-1-28-3	GREEN	5.51	140.0	5.315	135.00
29		M450P-00-1-29-3	GREEN	5.71	145.0	5.512	140.00
30		M450P-00-1-30-3	GREEN	5.91	150.0	5.709	145.00

REF. THE LAST 2 DIGITS OF THE PART NUMBER EQUAL CIRCUIT COUNT

REVISED DOC TOL EC NO: IPG2017-0881 DRWN: ABENJAMI CHKD: -- APPR: BRUPERT 2014/10/16	QUALITY SYMBOLS ▽=0 ▽C=0	GENERAL TOLERANCES (UNLESS SPECIFIED)		DIMENSION STYLE		SCALE	DESIGN UNITS	THIRD ANGLE PROJECTION	
		mm	INCH	IN/MM		---	METRIC		
		4 PLACES	±---	±---	DRAWN BY	DATE	TITLE PIN HEADER BREAKABLE 5.00MM, VERTICAL 1.30MM PIN DIA		
		3 PLACES	±---	±---	RSTONE	2014/07/28			
2 PLACES	±---	±---	CHECKED BY	DATE	MOLEX INCORPORATED				
1 PLACE	±---	±---	G FARNSW	---					
ANGULAR ±---°		DRAFT WHERE APPLICABLE MUST REMAIN WITHIN DIMENSIONS		APPROVED BY		DATE	DOCUMENT NO.		
				JFMURPHY		2014/10/16	SD-39756-001		
				MATERIAL NO.		SEE CHART		SHEET NO.	
				SIZE		THIS DRAWING CONTAINS INFORMATION THAT IS PROPRIETARY TO MOLEX INCORPORATED AND SHOULD NOT BE USED WITHOUT WRITTEN PERMISSION		1 OF 1	
A1				B					

10

9

8

7

6

5

4

3

2

1