



Chipsmall Limited consists of a professional team with an average of over 10 year of expertise in the distribution of electronic components. Based in Hongkong, we have already established firm and mutual-benefit business relationships with customers from,Europe,America and south Asia,supplying obsolete and hard-to-find components to meet their specific needs.

With the principle of “Quality Parts,Customers Priority,Honest Operation,and Considerate Service”,our business mainly focus on the distribution of electronic components. Line cards we deal with include Microchip,ALPS,ROHM,Xilinx,Pulse,ON,Everlight and Freescale. Main products comprise IC,Modules,Potentiometer,IC Socket,Relay,Connector.Our parts cover such applications as commercial,industrial, and automotives areas.

We are looking forward to setting up business relationship with you and hope to provide you with the best service and solution. Let us make a better world for our industry!



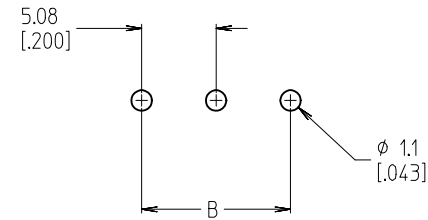
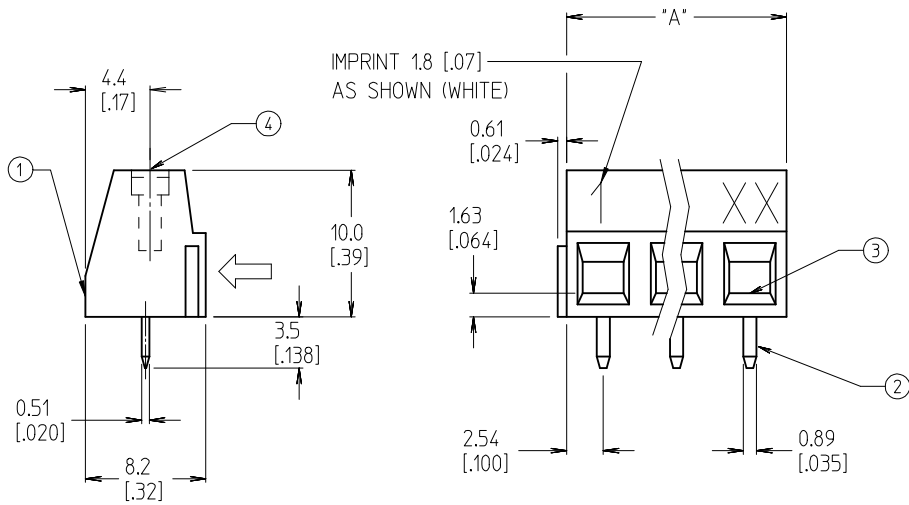
Contact us

Tel: +86-755-8981 8866 Fax: +86-755-8427 6832

Email & Skype: info@chipsmall.com Web: www.chipsmall.com

Address: A1208, Overseas Decoration Building, #122 Zhenhua RD., Futian, Shenzhen, China

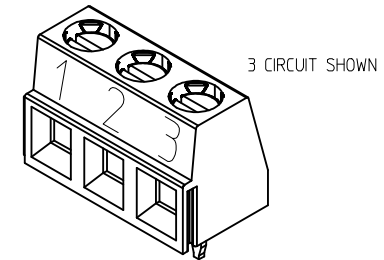




NOTES:

1. MATERIAL: SEE TABLE
2. FINISHES: SEE TABLE
3. ELECTRICAL SPECS
VOLTAGE: 300V
CURRENT: 13.5A
4. UL FILE: E48521
5. ASSEMBLY IS ROHS COMPLIANT
6. INCH DIMS ARE SHOWN IN BRACKETS [XXX].

NO. OF CIRCUITS "XX"	MATERIAL NO. 10A PRINTING GREEN	MATERIAL NO. 10A PRINTING BLACK	MATERIAL NO. NO PRINTING (GREEN)	MATERIAL NO. NO PRINTING (BLACK)	DIM. "A"	DIM. "B"
02		398820302	398804302	398800302	10.2 [0.40]	5.08 [0.200]
03		398820303	398804303	398800303	15.2 [0.60]	10.16 [0.400]
04		398820304	398804304	398800304	20.3 [0.80]	15.24 [0.600]
05			398804305	398800305	25.4 [1.00]	20.32 [0.800]
06			398804306	398800306	30.5 [1.20]	25.40 [1.000]
07			398804307	398800307	35.6 [1.40]	30.48 [1.200]
08	398890045		398804308	398800308	40.6 [1.60]	35.56 [1.400]
09			398804309	398800309	45.7 [1.80]	40.64 [1.600]
10			398804310	398800310	50.8 [2.00]	45.72 [1.800]
11			398804311	398800311	55.9 [2.20]	50.80 [2.000]
12			398804312	398800312	61.0 [2.40]	55.88 [2.200]
13			398804313	398800313	66.0 [2.60]	60.96 [2.400]
14			398804314	398800314	71.1 [2.80]	66.04 [2.600]
15			398804315	398800315	76.2 [3.00]	71.12 [2.800]
16			398804316	398800316	81.3 [3.20]	76.20 [3.000]
17			398804317	398800317	86.4 [3.40]	81.28 [3.200]
18			398804318	398800318	91.4 [3.60]	86.36 [3.400]
19			398804319	398800319	96.5 [3.80]	91.44 [3.600]
20			398804320	398800320	101.6 [4.00]	96.52 [3.800]
21			398804321	398800321	106.7 [4.20]	101.60 [4.000]
22			398804322	398800322	111.8 [4.40]	106.68 [4.200]
23			398804323	398800323	116.8 [4.60]	111.76 [4.400]
24			398804324	398800324	121.9 [4.80]	116.84 [4.600]
25			398804325	398800325	127.0 [5.00]	121.92 [4.800]



ITEM	QTY.	DESCRIPTION	MATERIAL	FINISH
4	XX	SCREW, M3	COPPER ALLOY	NICKEL PLATED
3	XX	CAGE CLAMP	COPPER ALLOY	NICKEL PLATED
2	XX	TERMINAL, PC	COPPER ALLOY	TIN PLATED
1	1	INSULATOR	POLYAMIDE	BLACK

P/N WAS 398890028 EC NO: IPG2015-0984 TIDRWARSTONE 2014/11/21 CHKDB ARDEN 2014/11/25 APPR: J MURPHY 2015/04/22	QUALITY SYMBOLS ▽=0 ▽=0	GENERAL TOLERANCES (UNLESS SPECIFIED) mm INCH 4 PLACES ± --- ± --- 3 PLACES ± --- ± .005 2 PLACES ± 0.13 ± .010 1 PLACE ± 0.3 ± --- ANGULAR ± 2 °	DIMENSION STYLE MM/IN DRAWN BY DATE CLYORK 2010/01/26 CHECKED BY DATE DTITUS 2010/01/26 APPROVED BY DATE DTITUS 2010/02/01	SCALE DESIGN UNITS INCH THIRD ANGLE PROJECTION
	DRAFT WHERE APPLICABLE MUST REMAIN WITHIN DIMENSIONS			
	MATERIAL NO.		SEE CHART	
	DOCUMENT NO.		SD-39880-003	

5.08/.200 EUROSTYLE LOW, SINGLE ROW FIXED BLOCK

MOLEX INCORPORATED

SD-39880-003

THIS DRAWING CONTAINS INFORMATION THAT IS PROPRIETARY TO MOLEX INCORPORATED AND SHOULD NOT BE USED WITHOUT WRITTEN PERMISSION