



Chipsmall Limited consists of a professional team with an average of over 10 year of expertise in the distribution of electronic components. Based in Hongkong, we have already established firm and mutual-benefit business relationships with customers from,Europe,America and south Asia,supplying obsolete and hard-to-find components to meet their specific needs.

With the principle of “Quality Parts,Customers Priority,Honest Operation,and Considerate Service”,our business mainly focus on the distribution of electronic components. Line cards we deal with include Microchip,ALPS,ROHM,Xilinx,Pulse,ON,Everlight and Freescale. Main products comprise IC,Modules,Potentiometer,IC Socket,Relay,Connector.Our parts cover such applications as commercial,industrial, and automotives areas.

We are looking forward to setting up business relationship with you and hope to provide you with the best service and solution. Let us make a better world for our industry!



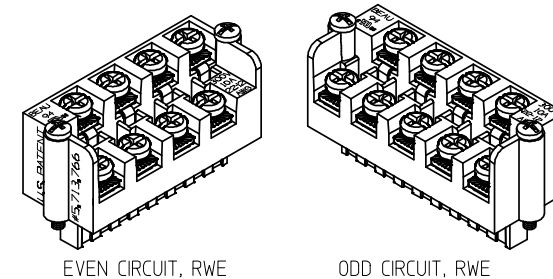
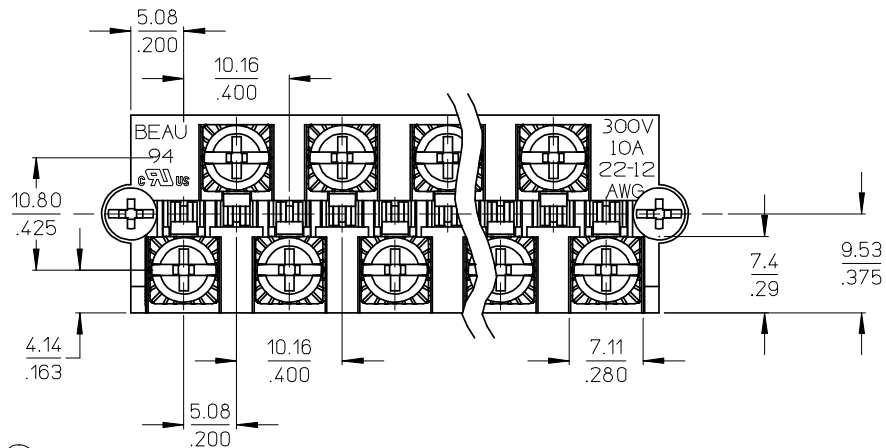
## Contact us

Tel: +86-755-8981 8866 Fax: +86-755-8427 6832

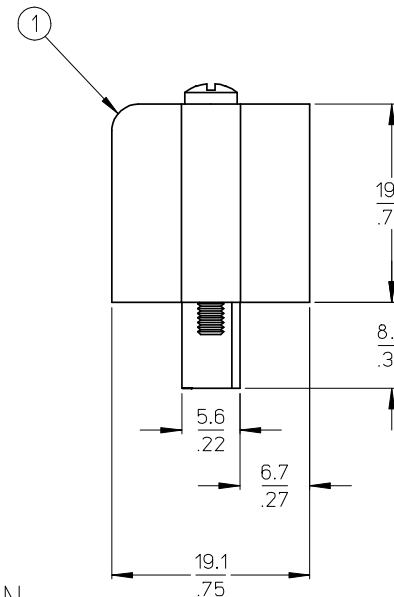
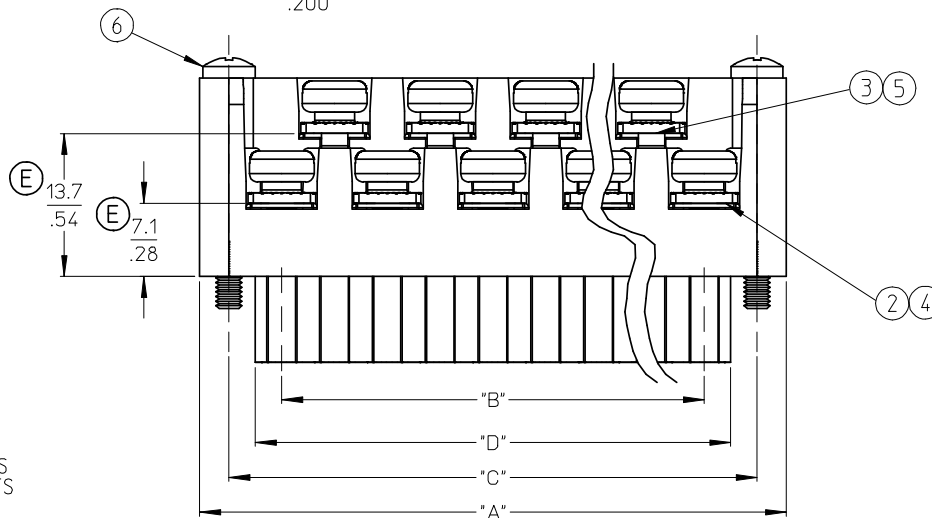
Email & Skype: info@chipsmall.com Web: www.chipsmall.com

Address: A1208, Overseas Decoration Building, #122 Zhenhua RD., Futian, Shenzhen, China





AUXILIARY VIEWS  
SCALE 1:1



NOTES:

1. MATERIAL: SEE TABLE
2. FINISHES: SEE TABLE
3. PRODUCT SPECIFICATION: NOT REQUIRED
4. PACKAGING: NOT REQUIRED
5. MATES WITH: MOST 5.08 (.200) PIN HEADERS
6. "XX" REFERS TO THE QUANTITY OF CIRCUITS
7. ROHS COMPLIANT



ODD CIRCUIT CONFIGURATION SHOWN

|      |                                   |                                  |                                |               |                |
|------|-----------------------------------|----------------------------------|--------------------------------|---------------|----------------|
| 8    | 2                                 | 2                                | SCREW, MOUNTING, M2.5 X .450   | STEEL         | ZINC CHROMATE  |
| 7    | XX                                | XX                               | SCREW, M3.5 X .280             | STEEL         | ZINC CHROMATE  |
| 6    | XX                                | XX                               | NUT, M3.5, HEX                 | STEEL         | ZINC CHROMATE  |
| 5    | XX/2                              | (XX-1/2)                         | REAR ROW TERMINAL (-G30 OPT.)  | PHOS. BRONZE  | SELECTIVE GOLD |
| 4    | XX/2                              | (XX+1/2)                         | FRONT ROW TERMINAL (-G30 OPT.) | PHOS. BRONZE  | SELECTIVE GOLD |
| 3    | XX/2                              | (XX-1/2)                         | REAR ROW TERMINAL              | PHOS. BRONZE  | HOT TIN DIP    |
| 2    | XX/2                              | (XX+1/2)                         | FRONT ROW TERMINAL             | PHOS. BRONZE  | HOT TIN DIP    |
| 1    | 1                                 | 1                                | BARRIER                        | THERMOPLASTIC | BLACK          |
| ITEM | QTY.<br>(EVEN NO. OF<br>CIRCUITS) | QTY.<br>(ODD NO. OF<br>CIRCUITS) | DESCRIPTION                    | MATERIAL      | FINISH         |

REVISED & REDRAWN  
EC NO: WNA2008-0391  
DRWN: JENC INAS 2008/07/01  
CHKD: CYORK 2008/07/02  
APPR: JMACNEIL 2008/07/07

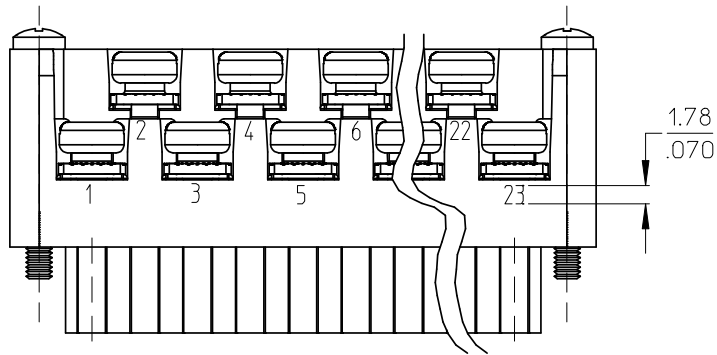
QUALITY SYMBOLS  
▽=0  
▽=0

| GENERAL TOLERANCES (UNLESS SPECIFIED)                |        |
|--|--------|
| 4 PLACES   | ± .005 |
| 3 PLACES   | ± .005 |
| 2 PLACES   | ± 0.13 |
| 1 PLACE  | ± 0.3  |
| ANGULAR ± 2 °  |        |
| DRAFT WHERE APPLICABLE MUST REMAIN WITHIN DIMENSIONS |        |

| DIMENSION STYLE |            |
|-----------------|------------|
| MM/IN           |            |
| DRAWN BY        | DATE       |
| C. YORK         | 2004/03/18 |
| CHECKED BY      | DATE       |
| R. STONE        | 2004/03/18 |
| APPROVED BY     | DATE       |
| G. ROBERTSON    | 2004/03/18 |
| MATERIAL NO.    |            |
| SEE SHEET 2     |            |

|   |              |                        |
|---|--------------|------------------------|
| SCALE   | DESIGN UNITS | THIRD ANGLE PROJECTION |
| 2:1   | INCH         |                        |
| TITLE   |              |                        |
| 5.08/.200 PLUG ASSY, FWE WITH STD. MOUNTING ENDS (9469XX)   |              |                        |
| MOLEX MOLEX INCORPORATED  |              | SHEET NO.              |
| DOCUMENT NO.  |              | 1 OF 2                 |
| SD-39940-003  |              |                        |
| THIS DRAWING CONTAINS INFORMATION THAT IS PROPRIETARY TO MOLEX INCORPORATED AND SHOULD NOT BE USED WITHOUT WRITTEN PERMISSION |              |                        |

| NO. OF CIRC. "XX" | "A"          | "B"           | "C"           | "D" <sup>+0.00</sup> <sub>-0.25</sub> [ <sup>+0.000</sup> <sub>-0.010</sub> ] | MATERIAL NO. (STANDARD) | MATERIAL NO. (-G30 OPT.) | MATERIAL NO. (-10A OPT.) |
|-------------------|--------------|---------------|---------------|---|-------------------------|--------------------------|--------------------------|
| 03                | 25.9 [1.02]  | 40.16 [1.60]  | 20.32 [0.80]  | 15.2 [0.60]   | 399400503               | 399410503                |                          |
| 04                | 31.0 [1.22]  | 45.24 [1.80]  | 25.40 [1.00]  | 20.3 [0.80]   | 399400504               | 399410504                |                          |
| 05                | 36.1 [1.42]  | 50.32 [1.98]  | 30.48 [1.20]  | 25.4 [1.00]   | 399400505               | 399410505                |                          |
| 06                | 41.1 [1.62]  | 55.40 [2.18]  | 35.56 [1.40]  | 30.5 [1.20]   | 399400506               | 399410506                |                          |
| 07                | 46.2 [1.82]  | 60.48 [2.38]  | 40.64 [1.60]  | 35.6 [1.40]   | 399400507               | 399410507                |                          |
| 08                | 51.3 [2.02]  | 65.56 [2.58]  | 45.72 [1.80]  | 40.6 [1.60]   | 399400508               | 399410508                |                          |
| 09                | 56.4 [2.22]  | 70.64 [2.78]  | 50.80 [2.00]  | 45.7 [1.80]   | 399400509               | 399410509                |                          |
| 10                | 61.5 [2.42]  | 75.72 [2.98]  | 55.88 [2.20]  | 50.8 [2.00]   | 399400510               | 399410510                |                          |
| 11                | 66.5 [2.62]  | 80.80 [3.18]  | 60.96 [2.40]  | 55.9 [2.20]   | 399400511               | 399410511                |                          |
| 12                | 71.6 [2.82]  | 85.88 [3.38]  | 66.04 [2.60]  | 61.0 [2.40]   | 399400512               | 399410512                |                          |
| 13                | 76.7 [3.02]  | 90.96 [3.58]  | 71.12 [2.80]  | 66.0 [2.60]   | 399400513               | 399410513                |                          |
| 14                | 81.8 [3.22]  | 96.04 [3.78]  | 76.20 [3.00]  | 71.1 [2.80]   | 399400514               | 399410514                | 399490015                |
| 15                | 86.9 [3.42]  | 101.12 [3.98] | 81.28 [3.20]  | 76.2 [3.00]   | 399400515               | 399410515                |                          |
| 16                | 91.9 [3.62]  | 106.20 [4.18] | 86.36 [3.40]  | 81.3 [3.20]   | 399400516               | 399410516                |                          |
| 17                | 97.0 [3.82]  | 111.28 [4.38] | 91.44 [3.60]  | 86.4 [3.40]   | 399400517               | 399410517                |                          |
| 18                | 102.1 [4.02] | 116.36 [4.58] | 96.52 [3.80]  | 91.4 [3.60]   | 399400518               | 399410518                |                          |
| 19                | 107.2 [4.22] | 121.44 [4.78] | 101.60 [4.00] | 96.5 [3.80]   | 399400519               | 399410519                |                          |
| 20                | 112.3 [4.42] | 126.52 [4.98] | 106.68 [4.20] | 101.6 [4.00]  | 399400520               | 399410520                |                          |
| 21                | 117.3 [4.62] | 131.60 [5.18] | 111.76 [4.40] | 106.7 [4.20]  | 399400521               | 399410521                |                          |
| 22                | 122.4 [4.82] | 136.68 [5.38] | 116.84 [4.60] | 111.8 [4.40]  | 399400522               | 399410522                |                          |
| 23                | 127.5 [5.02] | 141.76 [5.58] | 121.92 [4.80] | 116.8 [4.60]  | 399400523               | 399410523                |                          |
| 24                | 132.6 [5.22] | 146.84 [5.78] | 127.00 [5.00] | 121.9 [4.80]  | 399400524               | 399410524                |                          |



OPTIONAL  
10A IMPRINTING  
(ODD CIRCUIT CONFIGURATION SHOWN)

|  |                 |   |   |   |   |                        |
|--|-----------------|---|---|---|---|------------------------|
| SEE SHEET 1<br>EEC NO: WNA2008-0391<br>DRWN: JENCINAS 2008/07/01<br>CHKD: CYORK 2008/07/02<br>APPR: JMACNEIL 2008/07/02<br>REV DESCRIPTION | QUALITY SYMBOLS | GENERAL TOLERANCES (UNLESS SPECIFIED)   | DIMENSION STYLE   | SCALE   | DESIGN UNITS  | THIRD ANGLE PROJECTION |
|  | ▽=0<br>∇=0      | mm INCH<br>4 PLACES ± --- ± ---<br>3 PLACES ± --- ± .005<br>2 PLACES ± 0.13 ± .01<br>1 PLACE ± 0.3 ± ---<br>ANGULAR ± 2 ° | MM/IN   | 2:1   | INCH  |                        |
|  |                 | DRAFT WHERE APPLICABLE MUST REMAIN WITHIN DIMENSIONS  | DRAWN BY DATE<br>C. YORK 2004/03/18<br>CHECKED BY DATE<br>R. STONE 2004/03/18<br>APPROVED BY DATE<br>G. ROBERTSON 2004/03/18                                      | TITLE   | 5.08/.200 PLUG ASSY, FWE WITH STD. MOUNTING ENDS (9469XX) |                        |
|  |                 |   | MATERIAL NO.<br>SEE CHART<br>SIZE B THIS DRAWING CONTAINS INFORMATION THAT IS PROPRIETARY TO MOLEX INCORPORATED AND SHOULD NOT BE USED WITHOUT WRITTEN PERMISSION | MOLEX MOLEX INCORPORATED<br>DOCUMENT NO.<br>SD-39940-003<br>SHEET NO.<br>2 OF 2 |   |                        |