



Chipsmall Limited consists of a professional team with an average of over 10 year of expertise in the distribution of electronic components. Based in Hongkong, we have already established firm and mutual-benefit business relationships with customers from,Europe,America and south Asia,supplying obsolete and hard-to-find components to meet their specific needs.

With the principle of “Quality Parts,Customers Priority,Honest Operation,and Considerate Service”,our business mainly focus on the distribution of electronic components. Line cards we deal with include Microchip,ALPS,ROHM,Xilinx,Pulse,ON,Everlight and Freescale. Main products comprise IC,Modules,Potentiometer,IC Socket,Relay,Connector.Our parts cover such applications as commercial,industrial, and automotives areas.

We are looking forward to setting up business relationship with you and hope to provide you with the best service and solution. Let us make a better world for our industry!



## Contact us

Tel: +86-755-8981 8866 Fax: +86-755-8427 6832

Email & Skype: info@chipsmall.com Web: www.chipsmall.com

Address: A1208, Overseas Decoration Building, #122 Zhenhua RD., Futian, Shenzhen, China



## INTRODUCTIONS

Two-stage filters are for susceptibility use when equipment impedance at radiation frequency is low.

## COMPONENTS

PART NO.	C1(uF)	C2(uF)	L1(mH)	L2( uH)	Cy(pF)	R(KΩ)
03DVCG5	0.22	0.22	1.0	30	5500	330K
06DVCG5			1.7	70		
10DVCG5			1.2	40		
20DVGG5			1.73	30		

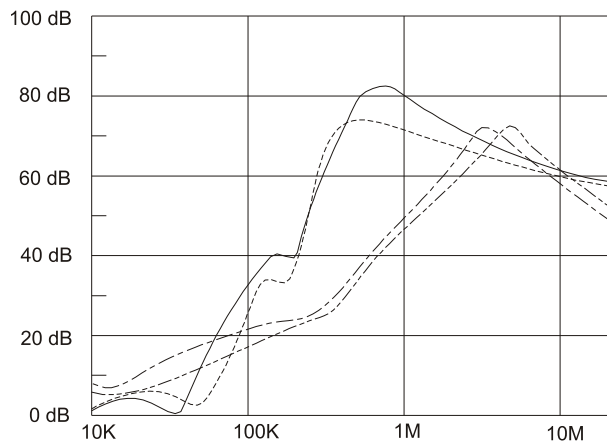
## MINIMUM INSERTION LOSS IN dB

COMMONMODE (L-G) IN 50 OHM SYSTEM							
CURRENT RATING	FREQUENCY-MHz						
	.15	.50	1.0	5.0	10	30	
3A	12	25	35	50	45	40	
6A	23	40	50	55	55	40	
• 10A	10	20	30	50	45	35	
** 20A	20	20	35	45	45	30	
DIFFERENTIALMODE (L-L) IN 50 OHM SYSTEM							
3A	30	50	60	60	70	50	
6A	25	35	50	55	55	50	
• 10A	25	55	60	60	55	55	
** 20A	25	50	50	50	45	45	

• VDE approved in 8A  
 \*\* VDE approved in 16A

## INSERTION LOSS (TYPICAL)

03DVCG5 ----- COMMON MODE ----- DIFF. MODE  
 06DVCG5 ----- COMMON MODE ----- DIFF. MODE



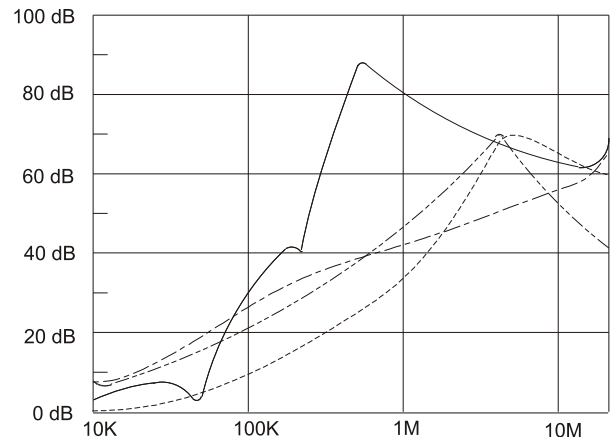
## SPECIFICATIONS

- Maximum leakage current each line-to-ground: @115VAC 60Hz: 0.45mA  
 @250VAC 50Hz: 0.90mA
- Hipot rating (one minute)  
 line-to-ground: 2250VDC  
 line-to-line: 1450VDC
- Operating frequency: 50/60Hz
- Rated voltage: 115/250VAC

## SERIES DIMENSIONS

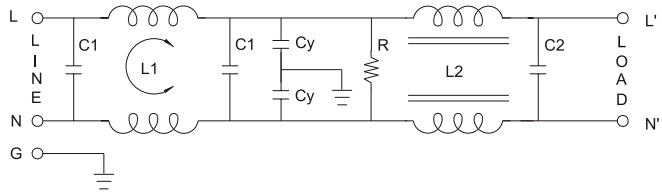
PART NO.	DIMENSIONS IN INCHES/mm				
	A	B	C	D	E
03DVCG5	3.25 82.5	1.90 48.3	1.15 29.2	2.38 60.5	2.77 70.4
06DVCG5	3.75 95.2	2.06 52.3	1.54 39.1	2.94 74.7	3.34 84.8
10DVCG5					
20DVGG5	5.25 130.5	3.40 86.4		3.75 95.3	4.14 105.1

10DVCG5 ----- COMMON MODE ----- DIFF. MODE  
 20DVGG5 ----- COMMON MODE ----- DIFF. MODE

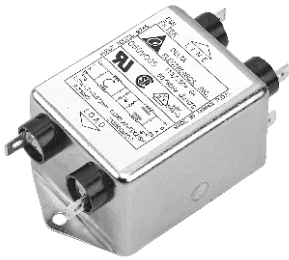


GENERAL PURPOSE TWO-STAGE FILTERS

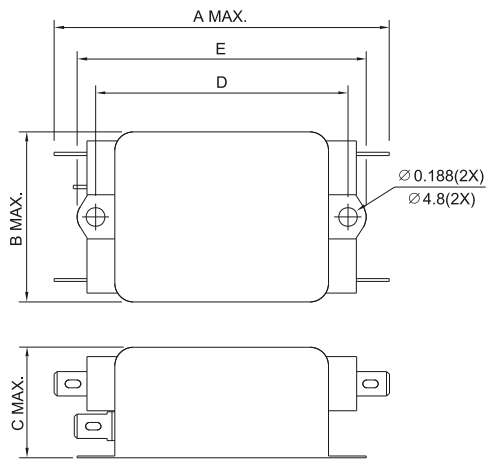
**ELECTRICAL SCHEMATIC**



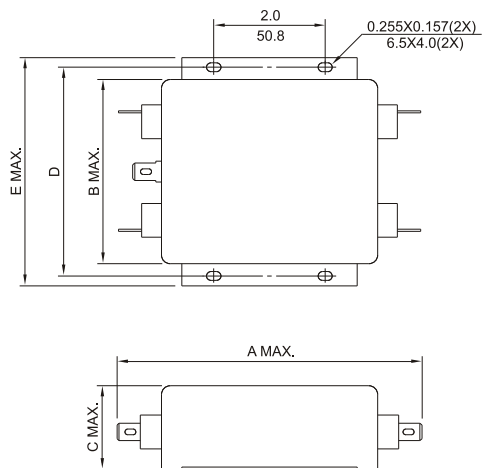
**MECHANICAL CONSTRUCTION**



CG5



GG5



UNIT: INCH  
mm