



Chipsmall Limited consists of a professional team with an average of over 10 year of expertise in the distribution of electronic components. Based in Hongkong, we have already established firm and mutual-benefit business relationships with customers from,Europe,America and south Asia,supplying obsolete and hard-to-find components to meet their specific needs.

With the principle of "Quality Parts,Customers Priority,Honest Operation,and Considerate Service",our business mainly focus on the distribution of electronic components. Line cards we deal with include Microchip,ALPS,ROHM,Xilinx,Pulse,ON,Everlight and Freescale. Main products comprise IC,Modules,Potentiometer,IC Socket,Relay,Connector.Our parts cover such applications as commercial,industrial, and automotives areas.

We are looking forward to setting up business relationship with you and hope to provide you with the best service and solution. Let us make a better world for our industry!



Contact us

Tel: +86-755-8981 8866 Fax: +86-755-8427 6832

Email & Skype: info@chipsmall.com Web: www.chipsmall.com

Address: A1208, Overseas Decoration Building, #122 Zhenhua RD., Futian, Shenzhen, China



INTRODUCTION

Two-stage filters providing excellent suppression at high frequency.

COMPONENTS

PART NO.	C1(uF)	C2(uF)	L1(mH)	L2(uH)	Cy(pF)	R(KΩ)
03DWCG5	0.22	0.22	1.0	30	5500	330K
06DWCG5			1.7	70		
10DWCG5			1.2	40		
20DWGG5			1.73	30		

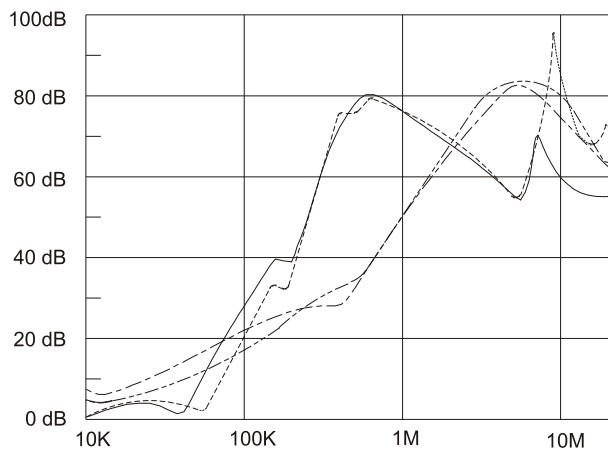
MINIMUM INSERTION LOSS IN dB

COMMONMODE (L-G) IN 50 OHM SYSTEM							
CURRENT RATING	FREQUENCY-MHz						
	.15	.50	1.0	5.0	10	30	
3A	12	20	30	60	60	45	
6A	25	30	45	55	55	45	
• 10A	15	20	30	60	55	45	
* 20A	20	25	30	55	55	45	
DIFFERENTIALMODE (L-L) IN 50 OHM SYSTEM							
3A	25	50	60	45	50	50	
6A	25	35	50	50	50	45	
• 10A	25	50	50	45	45	45	
* 20A	25	55	55	55	50	45	

• VDE approved in 8A
* VDE approved in 16A

INSERTION LOSS (TYPICAL)

03DWCG5 ----- COMMON MODE ----- DIFF. MODE
06DWCG5 ----- COMMON MODE ----- DIFF. MODE



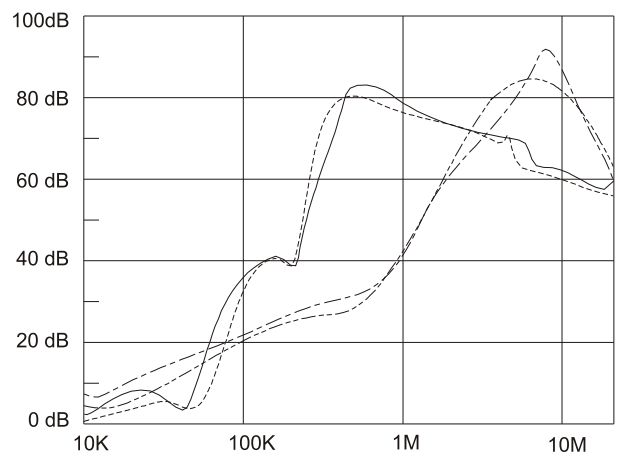
SPECIFICATIONS

- Maximum leakage current each line-to-ground: @ 115VAC 60Hz: 0.50mA
@ 250VAC 50Hz: 1.00mA
- Hipot rating (one minute)
line-to-ground: 2250VDC
line-to-line: 1450VDC
- Operating frequency: 50/60Hz
- Rated voltage: 115/250VAC

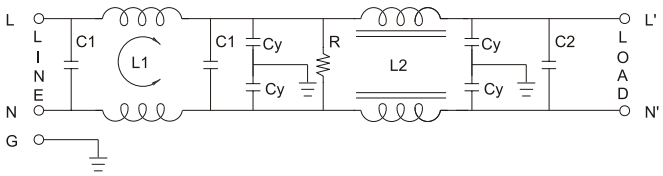
SERIES DIMENSIONS

PART NO.	DIMENSIONS IN INCHES/mm				
	A	B	C	D	E
03DWCG5	3.25 82.5	1.90 48.3	1.15 29.2	2.38 60.5	2.77 70.4
06DWCG5	3.75 95.2	2.06 52.3	1.54 39.1	2.94 74.7	3.34 84.8
10DWCG5					
20DWGG5	5.25 130.5	3.40 86.4		3.75 95.3	4.14 105.1

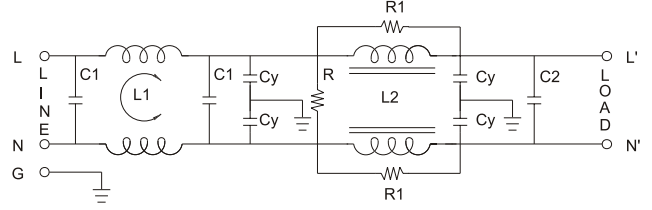
10DWCG5 ----- COMMON MODE ----- DIFF. MODE
20DWGG5 ----- COMMON MODE ----- DIFF. MODE



ELECTRICAL SCHEMATIC



3A. 6A. 10A.

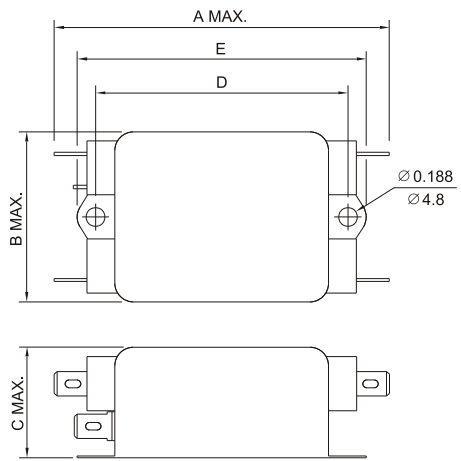


20A. R1=330(Ohm)

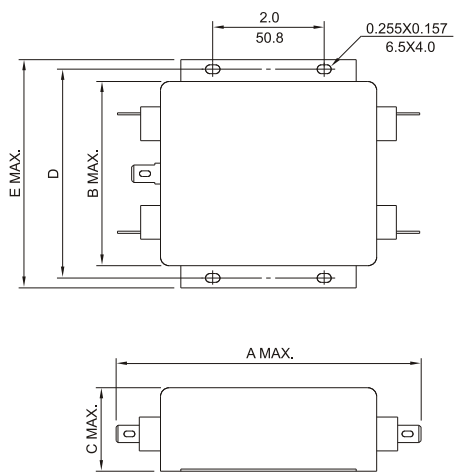
MECHANICAL CONSTRUCTION



CG5



GG5



UNIT: INCH
mm