



Chipsmall Limited consists of a professional team with an average of over 10 year of expertise in the distribution of electronic components. Based in Hongkong, we have already established firm and mutual-benefit business relationships with customers from,Europe,America and south Asia,supplying obsolete and hard-to-find components to meet their specific needs.

With the principle of "Quality Parts,Customers Priority,Honest Operation,and Considerate Service",our business mainly focus on the distribution of electronic components. Line cards we deal with include Microchip,ALPS,ROHM,Xilinx,Pulse,ON,Everlight and Freescale. Main products comprise IC,Modules,Potentiometer,IC Socket,Relay,Connector.Our parts cover such applications as commercial,industrial, and automotives areas.

We are looking forward to setting up business relationship with you and hope to provide you with the best service and solution. Let us make a better world for our industry!



## Contact us

Tel: +86-755-8981 8866 Fax: +86-755-8427 6832

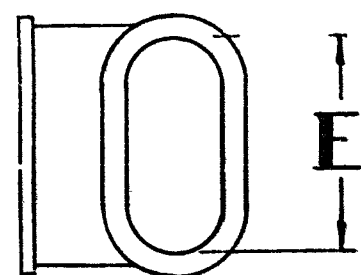
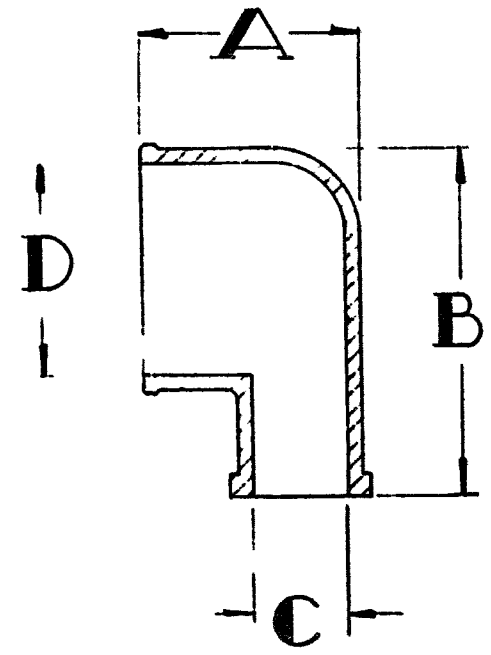
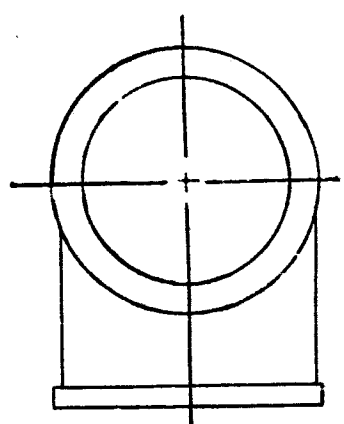
Email & Skype: info@chipsmall.com Web: www.chipsmall.com

Address: A1208, Overseas Decoration Building, #122 Zhenhua RD., Futian, Shenzhen, China



B	DWG No. 040-0000-001	CHG F	CHG. D.C.R.	REVISIONS	BY	DATE	CHK.
			A -	REDRAWN FOR CLARITY	H	8-25-59	LJS
			B -	"PART NO" COLUMN ADDED	H	11-20-59	LJS
			C -	TITLE WAS "CUP, CA3108ER&AR etc."	W H	11-24-59	RM
			D RC	ADDED KPT. SIZES 10 THRU 24 & TITLE	E. T.	11-24-59	LJS
			E R/C	MATL. WAS ZYTEL 101 NC-10 NATURAL	MH	11-25-59	K
			F	REVISED PER DCN M005529	KN	11-15-61	1/1991

INSERTS WITH CA-E  
 "16 & 12 CONTACTS  
 20 & 16 & 12 CONTACTS  
 INSERTS WITH CA-E  
 "24 & 4 CONTACTS



MATL MOLDED ZYTEL 101 NC-10 NATURAL  
 FINISH NONE

KPT SIZE	ER&AR SIZE	A ±.020	A ±.020	B ±.005	C ±.020	D ±.005	E ±.010	PART NO
10	10SL	.625	—	1.000	.272	.617	.616	040-0054-000
12	12S-12	.812	—	1.000	.272	.778	.772	-0095
14	14S-14	.812	—	1.000	.303	.852	.850	-0057
—	—	—	1.500	—	—	—	—	-0090
16	16S-16	.812	—	1.250	.375	.984	.915	-0039
—	—	—	1.750	—	—	—	—	-0092
18	18	1.000	—	1.250	.550	1.116	1.110	-0060
—	—	—	1.750	—	—	—	—	-0094
20	20	1.000	—	1.500	.582	1.245	1.235	-0061
—	—	—	1.750	—	—	—	—	-0095
22	22	1.000	—	1.500	.582	1.357	1.360	-0062
—	—	—	1.750	—	—	—	—	-0096
24	24	1.187	—	1.750	.630	1.490	1.485	-0063
—	—	—	1.875	—	—	—	—	-0097
28	28	1.375	—	2.000	.825	1.735	1.735	-0064
—	—	—	1.875	—	—	—	—	-0098
32	32	1.375	—	2.250	.825	2.021	2.021	-0065
—	—	—	1.875	—	—	—	—	-0099
36	36	1.375	—	2.500	.825	2.240	2.240	-0066
—	—	—	1.875	—	—	—	—	040-0100-000

Unless otherwise specified  
 all dimensions are in inches.  
**TOLERANCES**  
 Fractional dimensions ± .010  
 Decimal dimensions ± .002  
 Angular tolerances ± 1/2°  
 Remove all burrs and sharp edges

REF HUGHES  
 CODE 05081  
 CUSTOMER DRAWING  
 CUPPOTTING KPT 08P 10-24  
 CUPPOTTING, CA3108ER&AR 10SL-36

**CANNON ELECTRIC COMPANY**  
 666 East Dyer Road Santa Ana, California  
 This document and drawings, sketches and  
 schematic plans are the property of Cannon  
 Electric Co., and no parts thereof may be  
 reproduced and used without the written  
 consent of the owner.

DWN. W.D.H.	CHK. LJS	APP. [Signature]	SIZE B	WT. ACT. CALC.	SCALE NONE	DWG. No. 040-0000-001	CHG. F
-------------	----------	------------------	--------	----------------	------------	-----------------------	--------