



Chipsmall Limited consists of a professional team with an average of over 10 year of expertise in the distribution of electronic components. Based in Hongkong, we have already established firm and mutual-benefit business relationships with customers from,Europe,America and south Asia,supplying obsolete and hard-to-find components to meet their specific needs.

With the principle of “Quality Parts,Customers Priority,Honest Operation,and Considerate Service”,our business mainly focus on the distribution of electronic components. Line cards we deal with include Microchip,ALPS,ROHM,Xilinx,Pulse,ON,Everlight and Freescale. Main products comprise IC,Modules,Potentiometer,IC Socket,Relay,Connector.Our parts cover such applications as commercial,industrial, and automotives areas.

We are looking forward to setting up business relationship with you and hope to provide you with the best service and solution. Let us make a better world for our industry!



Contact us

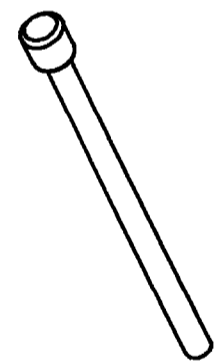
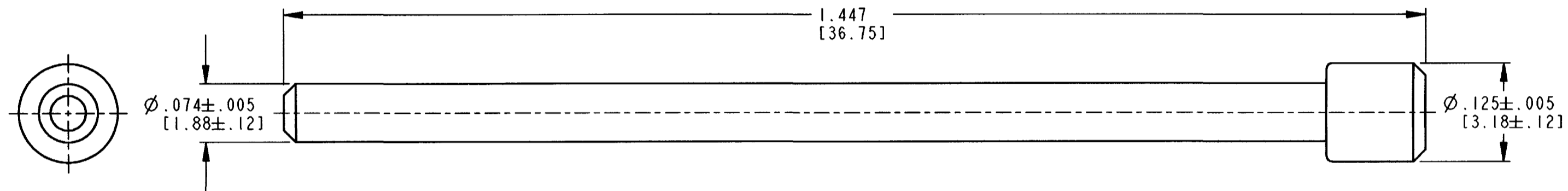
Tel: +86-755-8981 8866 Fax: +86-755-8427 6832

Email & Skype: info@chipsmall.com Web: www.chipsmall.com

Address: A1208, Overseas Decoration Building, #122 Zhenhua RD., Futian, Shenzhen, China



REV	NC	0413-003-1605	REVISIONS		
			SYM	DESCRIPTION	DATE
			NC	NEW RELEASE PER E.O. P20220	6-8-09 RDR



SCALE 2:1

- 3. MATERIAL: PLASTIC (BLUE). RoHS COMPLIANT.
 - 2. DIMENSION TOLERANCE: ±.025 [.64]
 - 1. DIMENSIONS ARE IN INCHES [MM].
- NOTES: UNLESS OTHERWISE SPECIFIED

SIGNATURE & DATE		PLUG, SEALING SIZE 16 HD SERIES	EP	MATL. CODE
DR	D. MEYER 05-04-09		3850 INDUSTRIAL AVE. HEMET, CA 92545	
CHK	<i>[Signature]</i> 6/5/09		DEUTSCH INDUSTRIAL	
PE	<i>[Signature]</i> 6/5/09		B 0413-003-1605	
APPD	R. Rado 8-09	ENVELOPE	DWG SIZE	CODE 11139
SCALE	8:1	WT	SHEET	OF