



Chipsmall Limited consists of a professional team with an average of over 10 year of expertise in the distribution of electronic components. Based in Hongkong, we have already established firm and mutual-benefit business relationships with customers from,Europe,America and south Asia,supplying obsolete and hard-to-find components to meet their specific needs.

With the principle of “Quality Parts,Customers Priority,Honest Operation,and Considerate Service”,our business mainly focus on the distribution of electronic components. Line cards we deal with include Microchip,ALPS,ROHM,Xilinx,Pulse,ON,Everlight and Freescale. Main products comprise IC,Modules,Potentiometer,IC Socket,Relay,Connector.Our parts cover such applications as commercial,industrial, and automotives areas.

We are looking forward to setting up business relationship with you and hope to provide you with the best service and solution. Let us make a better world for our industry!



Contact us

Tel: +86-755-8981 8866 Fax: +86-755-8427 6832

Email & Skype: info@chipsmall.com Web: www.chipsmall.com

Address: A1208, Overseas Decoration Building, #122 Zhenhua RD., Futian, Shenzhen, China



10

9

8

7

6

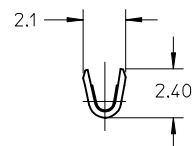
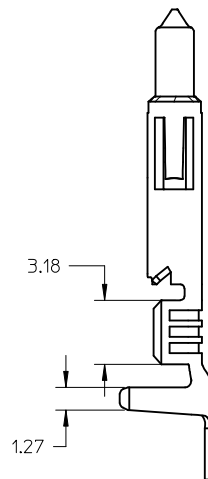
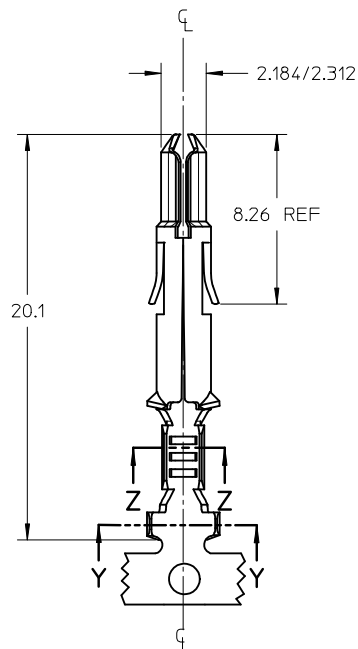
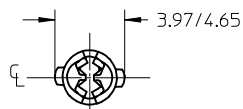
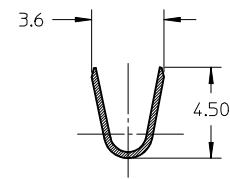
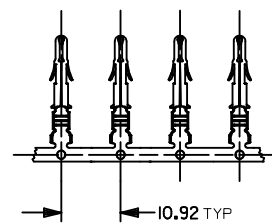
5

4

3

2

1

SECTION Z-Z
CONDUCTOR CRIMP AREASECTION Y-Y
INSULATION CRIMP AREA

TERMINALS IN CHAIN FORM



SPLIT PIN TERMINAL

NOTES:

- PIN TERMINALS FOR USE WITH 2.13 DIA SERIES HOUSINGS:
PLUG(42021-**))
CAP (42022-**))
- PIN TERMINALS MATE WITH 42024 SOCKET TERMIANLS 2.13 DIA SERIES
- TERMINALS FINISHED IN CHAIN FORM
- MATERIAL: 0.30 THICK STRIP:
A= BRASS, #C26000 PER SMES-124-E7
B= PHOSPHOR BRONZE, #C51000 PER SMES-124-E7
- FINISH:
HOT TIN DIP 20 m.l/0.51 microns MIN PER SDES-88-P901
- WIRE RANGE: 18-20AWG COVERS UL 1015, UL 1007, & UL 1569.
- PRODUCT SPECIFICATION: PS-42022-0001

PART NO	FINISH	MATERIAL	WIRE SIZE	INSULATION DIA RANGE
42023-2013	ES-88-P901	C26000	18-20 AWG	1.65-2.95 MM
42023-2014	ES-88-P901	C51000	18-20 AWG	1.65-2.95 MM

NOTES UPDATED EC NO: 12014-0044 DRWN:SS06 CHKD: APPR: I SHWARG 2013/11/08 2013/12/02	QUALITY SYMBOLS $\overline{F_A}=0$ $\overline{F_G}=0$ $\overline{F_P}=0$	GENERAL TOLERANCES (UNLESS SPECIFIED)		DIMENSION STYLE MM ONLY		SCALE 4:1	DESIGN UNITS METRIC	THIRD ANGLE PROJECTION MLX TERMINAL SPLIT PIN, 18-20 AWG, 2.13 DIA SERIES molex SD-42023-001 1 OF 1
NOTES UPDATED EC NO: 12014-0044 DRWN:SS06 CHKD: APPR: I SHWARG 2013/11/08 2013/12/02	QUALITY SYMBOLS $\overline{F_A}=0$ $\overline{F_G}=0$ $\overline{F_P}=0$	GENERAL TOLERANCES (UNLESS SPECIFIED)		DIMENSION STYLE MM ONLY		SCALE 4:1	DESIGN UNITS METRIC	THIRD ANGLE PROJECTION MLX TERMINAL SPLIT PIN, 18-20 AWG, 2.13 DIA SERIES molex SD-42023-001 1 OF 1
NOTES UPDATED EC NO: 12014-0044 DRWN:SS06 CHKD: APPR: I SHWARG 2013/11/08 2013/12/02	QUALITY SYMBOLS $\overline{F_A}=0$ $\overline{F_G}=0$ $\overline{F_P}=0$	GENERAL TOLERANCES (UNLESS SPECIFIED)		DIMENSION STYLE MM ONLY		SCALE 4:1	DESIGN UNITS METRIC	THIRD ANGLE PROJECTION MLX TERMINAL SPLIT PIN, 18-20 AWG, 2.13 DIA SERIES molex SD-42023-001 1 OF 1
NOTES UPDATED EC NO: 12014-0044 DRWN:SS06 CHKD: APPR: I SHWARG 2013/11/08 2013/12/02	QUALITY SYMBOLS $\overline{F_A}=0$ $\overline{F_G}=0$ $\overline{F_P}=0$	GENERAL TOLERANCES (UNLESS SPECIFIED)		DIMENSION STYLE MM ONLY		SCALE 4:1	DESIGN UNITS METRIC	THIRD ANGLE PROJECTION MLX TERMINAL SPLIT PIN, 18-20 AWG, 2.13 DIA SERIES molex SD-42023-001 1 OF 1

9

8

7

6

5

4

3

2

1