



Chipsmall Limited consists of a professional team with an average of over 10 year of expertise in the distribution of electronic components. Based in Hongkong, we have already established firm and mutual-benefit business relationships with customers from,Europe,America and south Asia,supplying obsolete and hard-to-find components to meet their specific needs.

With the principle of “Quality Parts,Customers Priority,Honest Operation,and Considerate Service”,our business mainly focus on the distribution of electronic components. Line cards we deal with include Microchip,ALPS,ROHM,Xilinx,Pulse,ON,Everlight and Freescale. Main products comprise IC,Modules,Potentiometer,IC Socket,Relay,Connector.Our parts cover such applications as commercial,industrial, and automotives areas.

We are looking forward to setting up business relationship with you and hope to provide you with the best service and solution. Let us make a better world for our industry!



Contact us

Tel: +86-755-8981 8866 Fax: +86-755-8427 6832

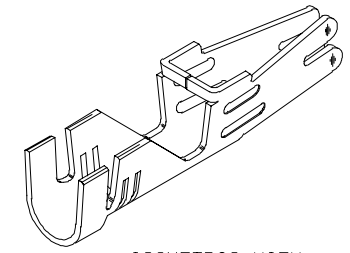
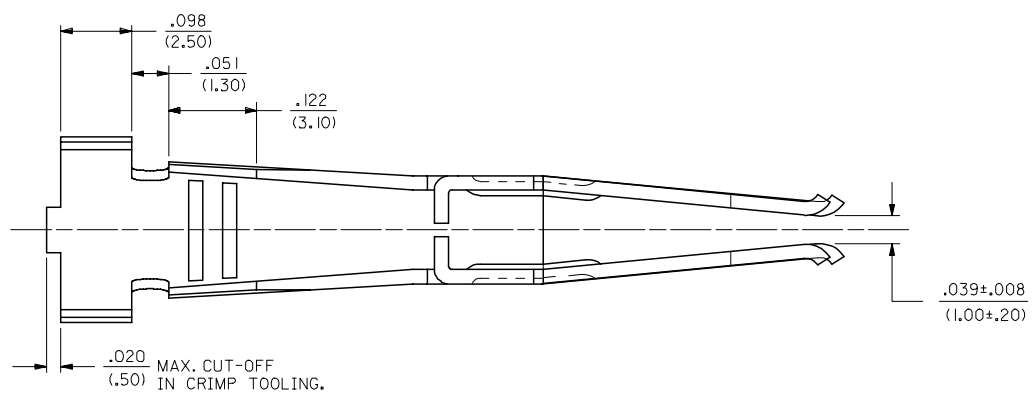
Email & Skype: info@chipsmall.com Web: www.chipsmall.com

Address: A1208, Overseas Decoration Building, #122 Zhenhua RD., Futian, Shenzhen, China

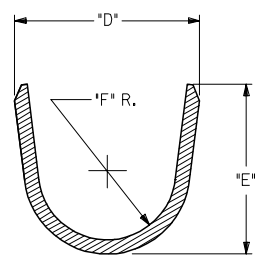
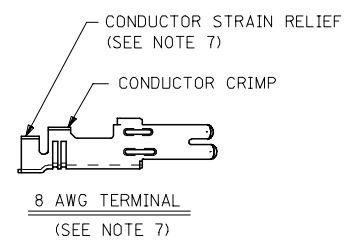
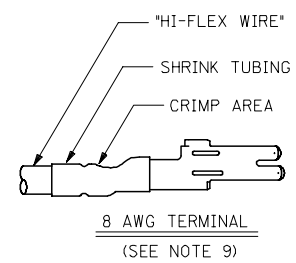
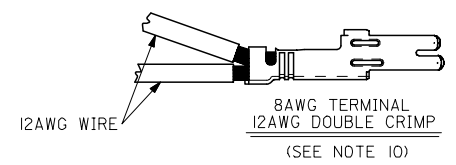
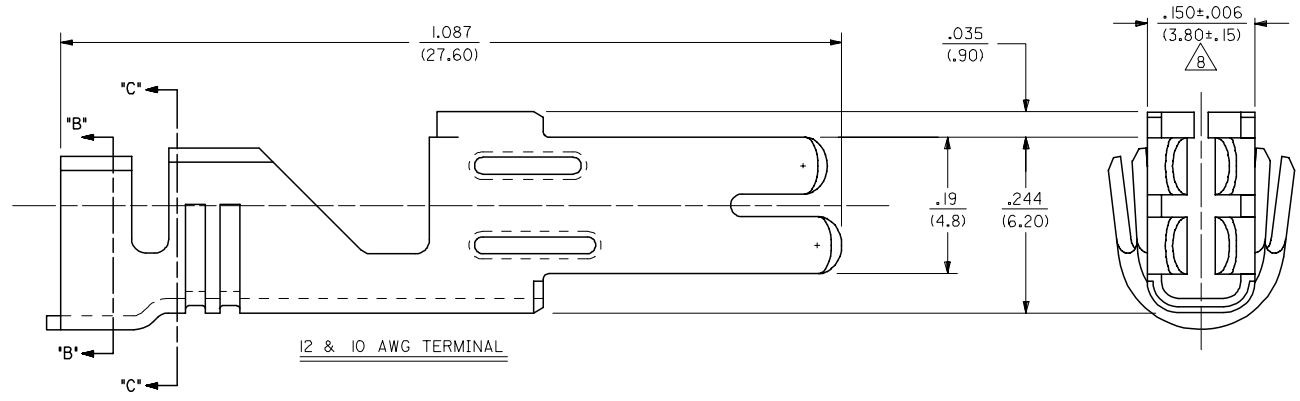


13 12 11 10 9 8 7 6 5 4 3 2 1

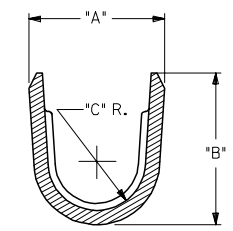
J
I
H
G
F
E
D
C
B
A



ISOMETRIC VIEW
(SCALE 4:1)

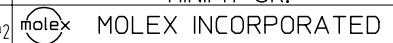


SECTION B-B



SECTION C-C
(BACKGROUND OMITTED)

REDRAWN IN ME10 EC NO: UCP2005-2769 DRAWN: JCOMERC 2005/06/17 CHKD: 2005/06/17 APPR: JCOMERC 2005/06/17	QUALITY SYMBOLS	GENERAL TOLERANCES (UNLESS SPECIFIED)	DIMENSION STYLE IN/MM	SCALE 8:1	DESIGN UNITS METRIC	THIRD ANGLE PROJECTION
	▽=0 ▽=0	4 PLACES ± --- ± --- 3 PLACES ± --- ± .010 2 PLACES ± 0.25 ± .016 1 PLACE ± 0.40 ± --- ANGULAR ±1/2°	DRAWN BY DATE R J F 1/6/92 CHECKED BY DATE R J F 1/6/92 APPROVED BY DATE R A S 1/6/92	TITLE	FEMALE CRIMP TERMINAL, 12, 10 & 8AWG MINIFIT SR.	
	DESCRIPTION	DRAFT WHERE APPLICABLE MUST REMAIN WITHIN DIMENSIONS	SEE CHART	MATERIAL NO.	DOCUMENT NO.	SHEET NO.
	H1			SD-42815-*		1 OF 2



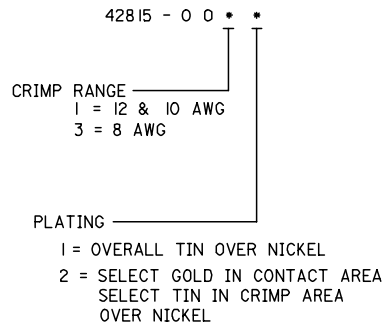
12 11 10 9 8 7 6 5 4 3 2 1

ITEM NUMBER	WIRE RANGE	DIM. A	DIM. B	DIM. C	DIM. D	DIM. E	DIM. F	MAX. INSULATION DIAMETER	PLATING
42815-0011	12 & 10 AWG	.213±.024 (5.40±.60)	.240±.016 (6.10±.40)	.067 R. (1.70)	.232±.024 (5.90±.60)	.260±.016 (6.60±.40)	.087 R. (2.20)	.209 DIA. (5.30)	OVERALL TIN
42815-0031	8 AWG	.229±.024 (5.83±.60)	.292±.016 (7.42±.40)	.067 R. (1.70)	.236±.024 (6.00±.60)	.216±.016 (5.50±.40)	.087 R. (2.20)	.260 DIA. (6.60)	
42815-0012	12 & 10 AWG	.213±.024 (5.40±.60)	.240±.016 (6.10±.40)	.067 R. (1.70)	.232±.024 (5.90±.60)	.260±.016 (6.60±.40)	.087 R. (2.20)	.209 DIA. (5.30)	SELECT GOLD
42815-0032	8 AWG	.229±.024 (5.83±.60)	.292±.016 (7.42±.40)	.067 R. (1.70)	.236±.024 (6.00±.60)	.216±.016 (5.50±.40)	.087 R. (2.20)	.260 DIA. (6.60)	

NOTES:

- 1) MATERIAL: COPPER ALLOY 151, .020/(.50) THICK.
- 2) PLATING:
 - 1 = .000100/(.00254) MIN. *TIN OVER .000050/(.00127) MIN. NICKEL.
 - 2 = .000030/(.00076) MIN. SELECT GOLD IN CONTACT AREA. .000100/(.00254) MIN. SELECT *TIN ON SOLDER TAILS OVER .000050/(.00127) MIN. NICKEL.
- * THE PRIMARY SHIPPING CARTON WILL BE LABELED COMPLIANT TO RoHS DIRECTIVE 2002/95/EC AND ELV ANNEX II OF DIRECTIVE 2000/53/EC. CARTONS WITHOUT THIS LABEL MAY CONTAIN PRODUCT WITH TIN-LEAD.
- 3) PRODUCT SPEC.: PS-42815-001
- 4) PART IS DESIGNED IN METRIC.
- 5) TERMINALS FOR USE WITH STRANDED WIRE ONLY.
- 6) ITEM NUMBERS PRECEDED BY AN 'X' IN THE CHART ARE NOT AVAILABLE.
- 7) THE 8 AWG TERMINAL HAS NO INSULATION CRIMP. THE SECONDARY CRIMP SECTION ACTS AS A STRAIN RELIEF ON THE BARE CONDUCTOR ONLY. SEE MOLEX CRIMP SPECIFICATION FOR DETAILS.
- 8) AFTER CRIMPING, THIS DIMENSION IS .140/(3.55) MINIMUM.
- 9) WHEN USING THE 8 AWG TERMINAL WITH "SUPERFLEX WIRE", MOLEX STRONGLY RECOMMENDS THAT THE APPROPRIATELY RATED HEAT SHRINK INSULATION BE APPLIED OVER THE WIRE INSULATION AND CRIMP AREA, AS SHOWN, TO MINIMIZE WIRE INSULATION CREEPAGE OUTSIDE OF HOUSING.
- 10) THE 8AWG TERMINAL WILL ALSO ACCOMODATE 2 I2AWG WIRES SEE CRIMP SPEC FOR DETAILS.
- 11) CRIMP SPECS.:
 - 638210000 FOR 10AWG & 12AWG
 - 638300000 FOR 8AWG, 8AWG HI-FLEX & DOUBLE 12AWG

LEGEND:



SEE SHEET 1 EC NO: UCP2005-2769 DRAWN: JCOMERC CHKD: JCOMERC APPR: JCOMERC H1	2005/06/17 2005/06/17 2005/06/17	QUALITY SYMBOLS ▽=0 ▽=0	GENERAL TOLERANCES (UNLESS SPECIFIED)		DIMENSION STYLE IN/MM		SCALE 8:1	DESIGN UNITS METRIC	THIRD ANGLE PROJECTION		
			4 PLACES ± --- ± ---	3 PLACES ± --- ± .010	2 PLACES ± 0.25 ± .016	1 PLACE ± 0.40 ± ---	mm	INCH	DRAWN BY RJF	DATE 1/6/92	TITLE FEMALE CRIMP TERMINAL 10-12 AWG & 8 AWG MINIFIT SR. SERIES
			ANGULAR ±1/2°				DRAWN BY RJF		CHECKED BY RJF	DATE 1/6/92	MOLEX INCORPORATED
			DRAFT WHERE APPLICABLE MUST REMAIN WITHIN DIMENSIONS				APPROVED BY RAS		DATE 1/6/92	MATERIAL NO. SD-42815-*	