



Chipsmall Limited consists of a professional team with an average of over 10 year of expertise in the distribution of electronic components. Based in Hongkong, we have already established firm and mutual-benefit business relationships with customers from,Europe,America and south Asia,supplying obsolete and hard-to-find components to meet their specific needs.

With the principle of “Quality Parts,Customers Priority,Honest Operation,and Considerate Service”,our business mainly focus on the distribution of electronic components. Line cards we deal with include Microchip,ALPS,ROHM,Xilinx,Pulse,ON,Everlight and Freescale. Main products comprise IC,Modules,Potentiometer,IC Socket,Relay,Connector.Our parts cover such applications as commercial,industrial, and automotives areas.

We are looking forward to setting up business relationship with you and hope to provide you with the best service and solution. Let us make a better world for our industry!



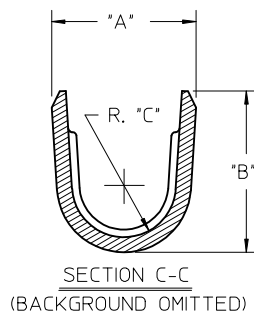
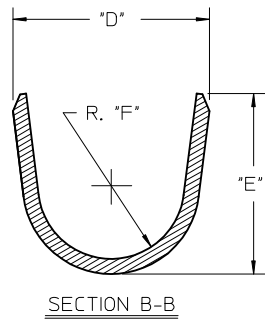
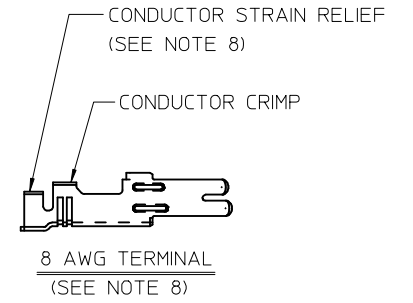
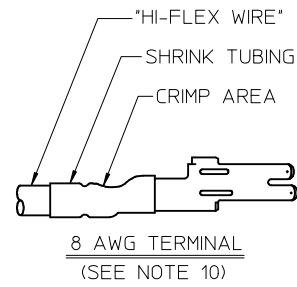
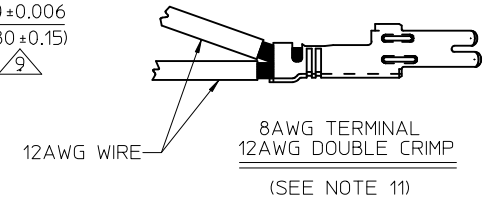
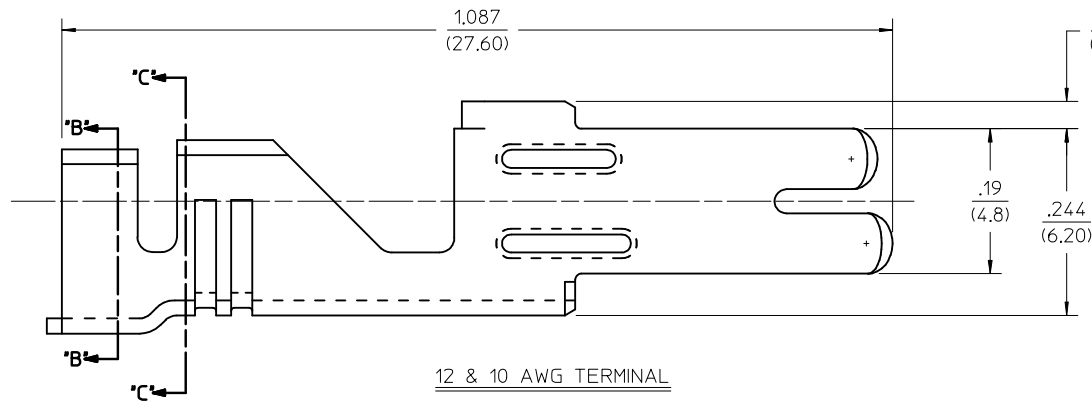
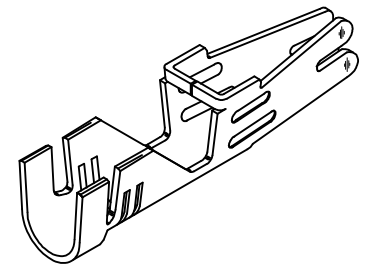
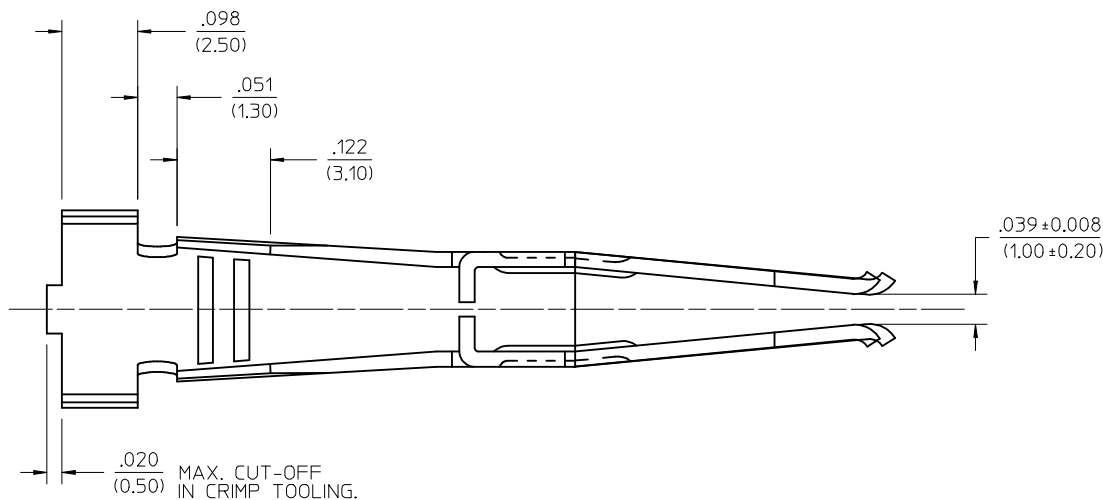
## Contact us

Tel: +86-755-8981 8866 Fax: +86-755-8427 6832

Email & Skype: [info@chipsmall.com](mailto:info@chipsmall.com) Web: [www.chipsmall.com](http://www.chipsmall.com)

Address: A1208, Overseas Decoration Building, #122 Zhenhua RD., Futian, Shenzhen, China





METRIC WIRE EC NO: UCP2015-5009 2015/05/28 DRWN: JMON11 CHKD: ANDERSON 2015/05/28 APPR: FSM1TH 2015/06/04	DESCRIPTION REV H4	QUALITY SYMBOLS <div>▽=0</div> <div>▽=0</div> <div>▽=0</div>	GENERAL TOLERANCES (UNLESS SPECIFIED)		DIMENSION STYLE IN/MM		SCALE 8:1	DESIGN UNITS METRIC	THIRD ANGLE PROJECTION			
				mm	INCH	DRAWN BY RJF	DATE 1/6/92	TITLE FEMALE CRIMP TERMINAL, 12, 10 & 8AWG MINIFIT SR. <b>molex</b>				
			4 PLACES ± --- ± ---			CHECKED BY RJF	DATE 1/6/92					
			3 PLACES ± --- ± .010			APPROVED BY RAS	DATE 1/6/92					
			2 PLACES ± 0.25 ± .016			MATERIAL NO.	DOCUMENT NO.				SHEET NO.	
			1 PLACE ± 0.40 ± ---			SEE CHART					SD-42815-*	1 OF 2
			0 PLACE ± --- ± ---			SIZE C	THIS DRAWING CONTAINS INFORMATION THAT IS PROPRIETARY TO MOLEX INCORPORATED AND SHOULD NOT BE USED WITHOUT WRITTEN PERMISSION					
			ANGULAR ±1/2°									
			DRAFT WHERE APPLICABLE MUST REMAIN WITHIN DIMENSIONS									

