



Chipsmall Limited consists of a professional team with an average of over 10 year of expertise in the distribution of electronic components. Based in Hongkong, we have already established firm and mutual-benefit business relationships with customers from,Europe,America and south Asia,supplying obsolete and hard-to-find components to meet their specific needs.

With the principle of “Quality Parts,Customers Priority,Honest Operation,and Considerate Service”,our business mainly focus on the distribution of electronic components. Line cards we deal with include Microchip,ALPS,ROHM,Xilinx,Pulse,ON,Everlight and Freescale. Main products comprise IC,Modules,Potentiometer,IC Socket,Relay,Connector.Our parts cover such applications as commercial,industrial, and automotives areas.

We are looking forward to setting up business relationship with you and hope to provide you with the best service and solution. Let us make a better world for our industry!



## Contact us

Tel: +86-755-8981 8866 Fax: +86-755-8427 6832

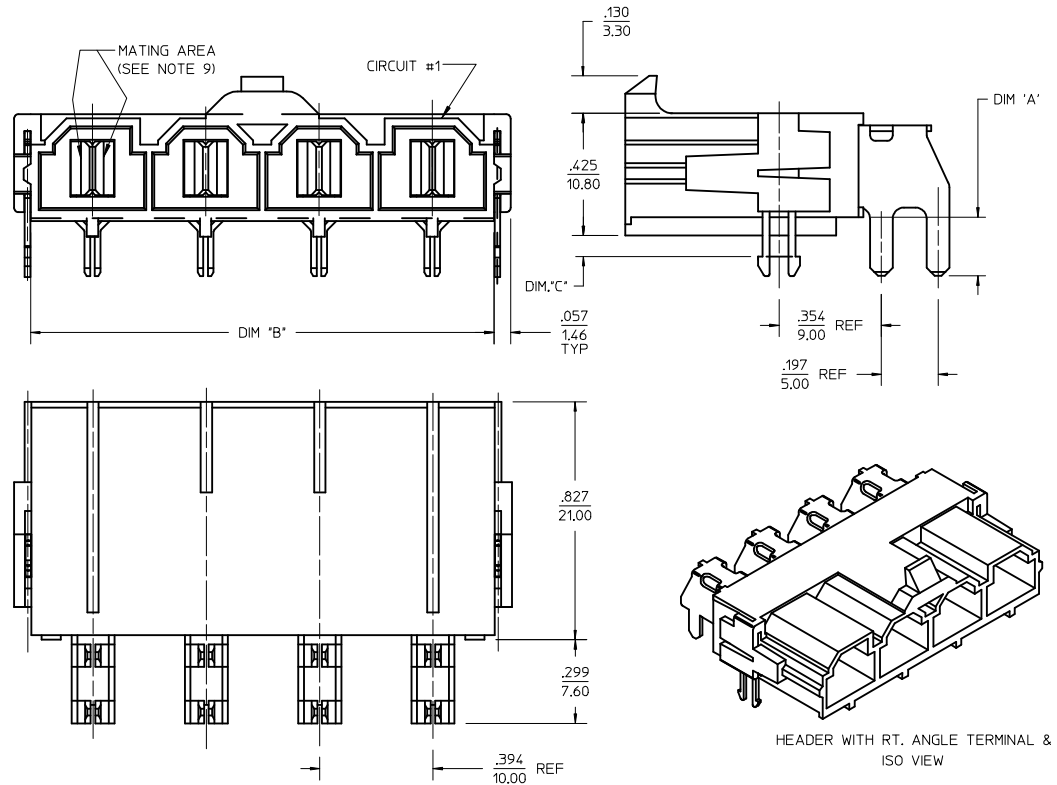
Email & Skype: info@chipsmall.com Web: www.chipsmall.com

Address: A1208, Overseas Decoration Building, #122 Zhenhua RD., Futian, Shenzhen, China



ITEM NUMBER	OKT. SIZE	DIM.'A'	DIM.'B'	DIM.'C'	TERMINAL PLATING	CLIP PLATING	STATUS			
J 42820-2213	2	.138/(3.50)	.823/(20.90)	.071/(1.80)	SELECT GOLD IN CONTACT AREA (SEE LEGEND)	NONE	ACTIVE			
42820-2313	2	.138/(3.50)	.823/(20.90)	N/A						
42820-2223	2	.201/(5.10)	.823/(20.90)	.102/(2.60)						
42820-2233	2	.201/(5.10)	.823/(20.90)	.134/(3.40)						
42820-2243	2	.327/(8.30)	.823/(20.90)	.259/(6.58)						
42820-3213	3	.138/(3.50)	1.217/(30.90)	.071/(1.80)						
42820-3228	3	.138/(3.50)	1.217/(30.90)	.102/(2.60)						
42820-3223	3	.201/(5.10)	1.217/(30.90)	.102/(2.60)						
42820-3233	3	.201/(5.10)	1.217/(30.90)	.134/(3.40)						
42820-3243	3	.327/(8.30)	1.217/(30.90)	.259/(6.58)						
I 42820-4213	4	.138/(3.50)	1.610/(40.90)	.071/(1.80)	SELECT MATTE TIN ON SOLDER TAILS	NONE	ACTIVE			
42820-4223	4	.201/(5.10)	1.610/(40.90)	.102/(2.60)						
42820-4233	4	.201/(5.10)	1.610/(40.90)	.134/(3.40)						
42820-4243	4	.327/(8.30)	1.610/(40.90)	.259/(6.58)						
42820-5213	5	.138/(3.50)	2.004/(50.90)	.071/(1.80)						
42820-5223	5	.201/(5.10)	2.004/(50.90)	.102/(2.60)						
42820-5233	5	.201/(5.10)	2.004/(50.90)	.134/(3.40)						
42820-5243	5	.327/(8.30)	2.004/(50.90)	.259/(6.58)						
42820-6213	6	.138/(3.50)	2.398/(60.90)	.071/(1.80)						
42820-6223	6	.201/(5.10)	2.398/(60.90)	.102/(2.60)						
H 42820-6233	6	.201/(5.10)	2.398/(60.90)	.134/(3.40)	SELECT SILVER IN CONTACT AREA (SEE LEGEND)	NONE	ACTIVE			
42820-6243	6	.327/(8.30)	2.398/(60.90)	.259/(6.58)						
G 42820-2214	2	.138/(3.50)	.823/(20.90)	.071/(1.80)				SELECT MATTE TIN ON SOLDER TAILS	NONE	ACTIVE
42820-2224	2	.201/(5.10)	.823/(20.90)	.102/(2.60)						
42820-2234	2	.201/(5.10)	.823/(20.90)	.134/(3.40)						
42820-2244	2	.327/(8.30)	.823/(20.90)	.259/(6.58)						
42820-2314	2	.138/(3.50)	.823/(20.90)	N/A						
42820-3214	3	.138/(3.50)	1.217/(30.90)	.071/(1.80)						
42820-3224	3	.201/(5.10)	1.217/(30.90)	.102/(2.60)						
42820-3234	3	.201/(5.10)	1.217/(30.90)	.134/(3.40)						
42820-3244	3	.327/(8.30)	1.217/(30.90)	.259/(6.58)						
42820-3314	3	.138/(3.50)	1.217/(30.90)	N/A						
F 42820-4214	4	.138/(3.50)	1.610/(40.90)	.071/(1.80)	SELECT MATTE TIN ON SOLDER TAILS	NONE	ACTIVE			
42820-4224	4	.201/(5.10)	1.610/(40.90)	.102/(2.60)						
42820-4234	4	.201/(5.10)	1.610/(40.90)	.134/(3.40)						
42820-4244	4	.327/(8.30)	1.610/(40.90)	.259/(6.58)						
E 42820-5214	5	.138/(3.50)	2.004/(50.90)	.071/(1.80)				SELECT MATTE TIN ON SOLDER TAILS	NONE	ACTIVE
42820-5224	5	.201/(5.10)	2.004/(50.90)	.102/(2.60)						
42820-5234	5	.201/(5.10)	2.004/(50.90)	.134/(3.40)						
42820-5244	5	.327/(8.30)	2.004/(50.90)	.259/(6.58)						
42820-5314	5	.138/(3.50)	2.004/(50.90)	N/A						
42820-6214	6	.138/(3.50)	2.398/(60.90)	.071/(1.80)						
42820-6224	6	.201/(5.10)	2.398/(60.90)	.102/(2.60)						
42820-6234	6	.201/(5.10)	2.398/(60.90)	.134/(3.40)						
D 42820-6244	6	.327/(8.30)	2.398/(60.90)	.259/(6.58)						

NOTE:  
 1) MATERIAL:  
 HOUSING MATERIAL:30% GLASS-FILLED NYLON 4/6, UL94V-0, COLOR: BLACK.  
 TERMINAL MATERIAL ALLOY 151.  
 2) FINISH:  
 2= .000100/(.00254) MIN. TIN OVER .000050/(.00127) MIN. NICKEL.  
 3= .000030/(.00076) MIN. SELECT GOLD IN CONTACT AREA.  
 OVER .000050/(.00127) MIN NICKEL.  
 4= .000100/(.00254) MIN SELECT SILVER IN CONTACT AREA  
 .000100/(.00254) MIN. SELECT TIN ON SOLDER TAILS  
 OVER .000050/(.00127) MIN NICKEL.  
 3) PRODUCT SPECIFICATION: PS-42815-001.  
 4) PACKAGING INFORMATION SEE MOLEX PACKING SPEC. PK-42820-910  
 5) PART MATES WITH MOLEX RECEPTACLE \*42816-\*\*\*2 WITH TPA.  
 6) PART IS DESIGNED IN METRIC.  
 7) AN "X" IN FRONT OF THE ITEM NUMBER INDICATES THE PART IS NOT TOOLED.  
 8) PARTS ARE NOT TO BE MATED OR UNMATED WHILE CIRCUITS ARE LIVE  
 9) WHEN USING OVERALL TIN PLATED TERMINALS:  
 FOR APPLICATIONS INVOLVING VIBRATION AND/OR TERMINAL CYCLING, MOLEX STRONGLY RECOMMENDS THE USE OF NYE LUBRICANT (NYOGEL 760G) ON THE MATING SURFACES OF THE TERMINAL.  
 10) PARTS CONFORMS TO CLASS 'B' REQUIREMENTS OF COSMETIC SPECIFICATIONS PS-45499-002  
 11) FOR TAPE AND REEL PACKAGING REFER TO PK-45986-004  
 12) BOARD CLIP HOLE MAY OR MAY NOT BE PLATED, REFER TO CHART FOR PLATED / UNPLATED CLIPS.  
 13) REFER AS-42815-001 FOR TIN PLATED TERMINALS RECOMMENDED LUBRICATION PROCEDURE.

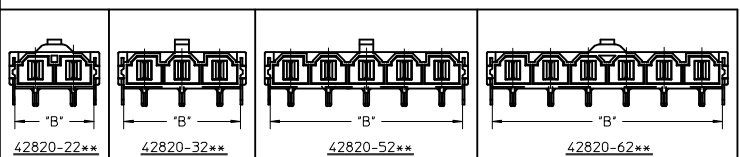


LEGEND :

A-42820 - \* \* \* \*  
 CIRCUIT SIZE (2-6)  
 PLATING  
 2 OR 9 = OVERALL BRIGHT TIN OVER NICKEL  
 3 OR 8 = SELECT GOLD IN CONTACT AREA  
 SELECT MATTE TIN ON SOLDER TAILS OVER NICKEL  
 4 = SELECT SILVER IN CONTACT AREA  
 SELECT MATTE TIN ON SOLDER TAILS OVER NICKEL

MOUNTING OPTION  
 1 = FLANGES (SEE DWG SDA-42820-x1\*\*)  
 2 = RETENTION CLIP  
 3 = NO RETENTION CLIP

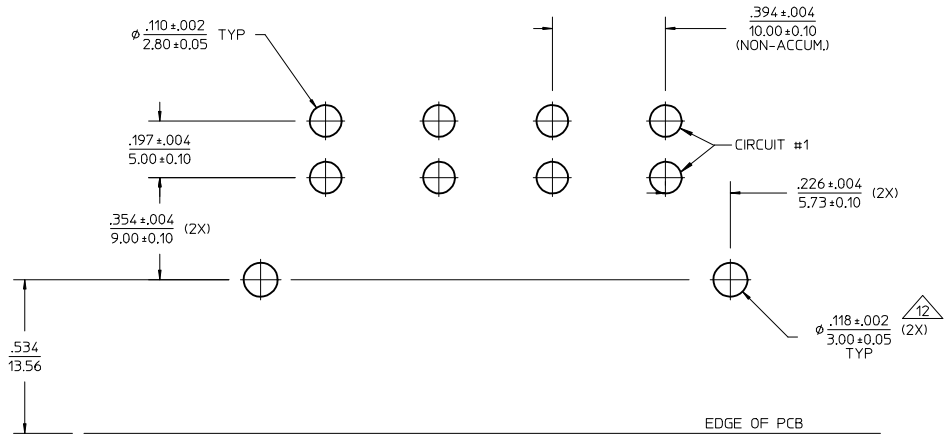
P.C. BOARD THICKNESS  
 1 = .062/(1.57) NOMINAL  
 2 = .093/(2.36) NOMINAL  
 3 = .125/(3.18) NOMINAL  
 4 = .250/(6.35) NOMINAL



ADD - 2314 & -3314 EC NO: UCP2016-2636 DRAWN: COLE CHKD: APPR: BPI/SZCZOR 2016/01/29	DESCRIPTION	QUALITY SYMBOLS	GENERAL TOLERANCES (UNLESS SPECIFIED)	DIMENSION STYLE	SCALE	DESIGN UNITS	THIRD ANGLE PROJECTION
		<input type="checkbox"/> = 0 <input type="checkbox"/> = 0 <input type="checkbox"/> = 0	mm    INCH 4 PLACES ± --- ± --- 3 PLACES ± --- ± .005 2 PLACES ± 0.13 ± .010 1 PLACE ± 0.25 ± --- 0 PLACE ± --- ± ---	IN/MM DRAWN BY    DATE KSM    1/4/96 CHECKED BY    DATE SF    1/4/96 APPROVED BY    DATE SF    1/4/96	TITLE MINI-FIT SR, RIGHT ANGLE HEADER ASSEMBLY <b>molex</b>	SHEET NO. 1 OF 2	
DRAFT WHERE APPLICABLE MUST REMAIN WITHIN DIMENSIONS		MATERIAL NO. <b>SEE CHART</b>	DOCUMENT NO. <b>SDA-42820-0002</b>				
THIS DRAWING CONTAINS INFORMATION THAT IS PROPRIETARY TO MOLEX INCORPORATED AND SHOULD NOT BE USED WITHOUT WRITTEN PERMISSION							

ITEM NUMBER	QKT. SIZE	DIM.'A'	DIM.'B'	DIM.'C'	TERMINAL PLATING	CLIP PLATING	STATUS
42820-2212	2	.138/(3,50)	.823/(20,90)	.071/(1,80)	OVERALL BRIGHT TIN	NONE	PLANNED FOR OBSOLESCENCE
42820-2219	2	.138/(3,50)	.823/(20,90)	.071/(1,80)			
42820-2222	2	.201/(5,10)	.823/(20,90)	.102/(2,60)			
42820-2232	2	.201/(5,10)	.823/(20,90)	.134/(3,40)			
42820-2239	2	.201/(5,10)	.823/(20,90)	.134/(3,40)			
42820-2242	2	.327/(8,30)	.823/(20,90)	.259/(6,58)			
42820-3212	3	.138/(3,50)	1.217/(30,90)	.071/(1,80)			
42820-3222	3	.201/(5,10)	1.217/(30,90)	.102/(2,60)			
42820-3229	3	.201/(5,10)	1.217/(30,90)	.102/(2,60)			
42820-3232	3	.201/(5,10)	1.217/(30,90)	.134/(3,40)			
42820-3242	3	.327/(8,30)	1.217/(30,90)	.259/(6,58)			
42820-4212	4	.138/(3,50)	1.610/(40,90)	.071/(1,80)			
42820-4312	4	.138/(3,50)	1.610/(40,90)	N/A			
42820-4222	4	.201/(5,10)	1.610/(40,90)	.102/(2,60)			
42820-4232	4	.201/(5,10)	1.610/(40,90)	.134/(3,40)			
42820-4242	4	.327/(8,30)	1.610/(40,90)	.259/(6,58)			
42820-5212	5	.138/(3,50)	2.004/(50,90)	.071/(1,80)			
42820-5222	5	.201/(5,10)	2.004/(50,90)	.102/(2,60)			
42820-5232	5	.201/(5,10)	2.004/(50,90)	.134/(3,40)			
42820-5242	5	.327/(8,30)	2.004/(50,90)	.259/(6,58)			
42820-6212	6	.138/(3,50)	2.398/(60,90)	.071/(1,80)			
42820-6222	6	.201/(5,10)	2.398/(60,90)	.102/(2,60)			
42820-6229	6	.201/(5,10)	2.398/(60,90)	.102/(2,60)			
42820-6232	6	.201/(5,10)	2.398/(60,90)	.134/(3,40)			
42820-6242	6	.327/(8,30)	2.398/(60,90)	.259/(6,58)			
42820-2332	2	.201/(5,10)	.823/(20,90)	N/A			
42820-2342	2	.327/(8,30)	.823/(20,90)	N/A			

SEE NOTE 11



RECOMMENDED P.C. BOARD PLATED -THRU HOLE LAYOUT  
(4 CKT. SHOWN FOR REF.)

<b>SEE SHEET 1</b> EC NO: UCP2016-2636 DRWN:MCOLE 2016/01/04 CHKD: APPR:BP1/SZCZOR 2016/01/29	QUALITY SYMBOLS	GENERAL TOLERANCES (UNLESS SPECIFIED)	DIMENSION STYLE	SCALE	DESIGN UNITS	THIRD ANGLE PROJECTION
	▽=0	mm INCH	IN/MM	3:1	METRIC	
	▽=0	4 PLACES ± --- ± ---	DRAWN BY DATE	MINI-FIT SR. RIGHT ANGLE HEADER ASSEMBLY		
	▽=0	3 PLACES ± --- ±.005	KSM 1/4/96	molex		
		2 PLACES ± 0.13 ±.010	CHECKED BY DATE	SDA-42820-0002		
		1 PLACE ± 0.25 ± ---	SF 1/4/96	2 OF 2		
		0 PLACE ± --- ± ---	APPROVED BY DATE	THIS DRAWING CONTAINS INFORMATION THAT IS PROPRIETARY TO MOLEX. INCORPORATED AND SHOULD NOT BE USED WITHOUT WRITTEN PERMISSION		
		ANGULAR ±1/2°	SF 1/4/96			
		DRAFT WHERE APPLICABLE MUST REMAIN WITHIN DIMENSIONS	MATERIAL NO.			
			SEE CHART			