



Chipsmall Limited consists of a professional team with an average of over 10 year of expertise in the distribution of electronic components. Based in Hongkong, we have already established firm and mutual-benefit business relationships with customers from,Europe,America and south Asia,supplying obsolete and hard-to-find components to meet their specific needs.

With the principle of “Quality Parts,Customers Priority,Honest Operation,and Considerate Service”,our business mainly focus on the distribution of electronic components. Line cards we deal with include Microchip,ALPS,ROHM,Xilinx,Pulse,ON,Everlight and Freescale. Main products comprise IC,Modules,Potentiometer,IC Socket,Relay,Connector.Our parts cover such applications as commercial,industrial, and automotives areas.

We are looking forward to setting up business relationship with you and hope to provide you with the best service and solution. Let us make a better world for our industry!



## Contact us

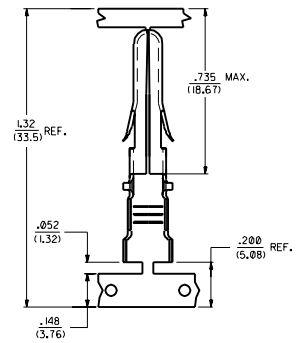
Tel: +86-755-8981 8866 Fax: +86-755-8427 6832

Email & Skype: info@chipsmall.com Web: www.chipsmall.com

Address: A1208, Overseas Decoration Building, #122 Zhenhua RD., Futian, Shenzhen, China

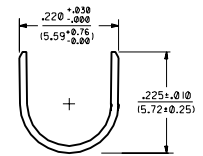
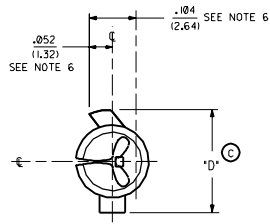
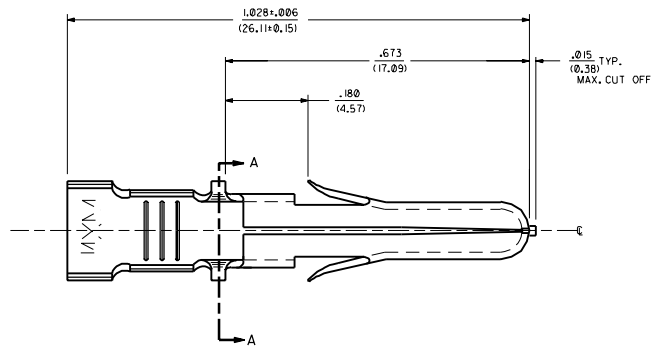


ITEM NO.	CRIMP SIZE	MATERIAL	PLATING	PACKAGING	'D'
42824-4001	18 AWG	.0160±.0005/(0.406/0.013) THICK BRASS ALLOY *C23000	PRE-TINNED .000202/ (0.00051) MIN. TIN	SUPPLIED ON REEL	.225 (5.72)
42824-4002	12 AWG			SUPPLIED LOOSE	
42824-4003	12 AWG			SUPPLIED ON REEL	.238 (6.05)
42824-4004	18 AWG			SUPPLIED LOOSE	
42824-4005	12 AWG				
42824-4006	12 AWG				

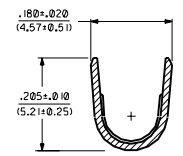


STRIP AND CARRIER LAYOUT  
SCALE 4:1

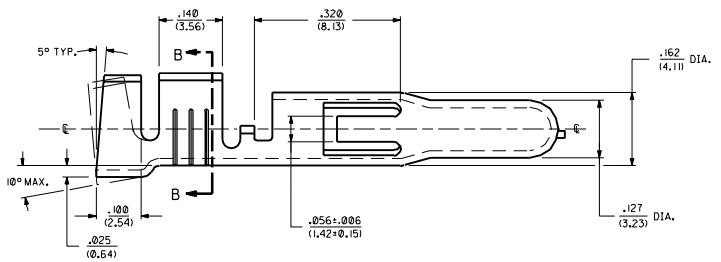
- NOTES:
1. THIS TERMINAL FOR USE IN HOUSING NO'S. 40585-1-5, 40585-3000, 43032-3300, 43032-3400, AND 43032-3500.
  2. TERMINALS FOR USE WITH SOLID OR STRANDED WIRE.
  3. TERMINALS TO BE SUPPLIED IN CHAIN FORM.
  4. PRODUCT CONFORMS TO PS-40585.
  5. REELS OF THESE TERMINALS CANNOT HAVE MECHANICAL SPLICES.
  6. USING SEAM LINE AS VERTICAL CENTERLINE INDICATOR- MAXIMUM EXCURSION FROM HORIZONTAL CENTERLINE IS INDICATED FOR BOTH LOCK AND STOP TABS.



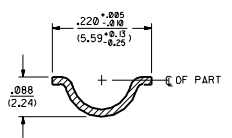
INSULATION CRIMP DETAIL



SECTION B-B



12 AWG TERMINAL SHOWN



SECTION A-A

C	ADD P/MS - 04 TH - 06 ECU USE 2000-0116 MINILEAK 88-02-22
B1	REV'D TAB & DIMS. ECU 86114 MRW 86-03-21
B	UPDATE PICTORIAL ECU 86087 C.E.S. 86-01-31
A4	ADD .003 ECU 86114 C.E.S. 86-01-0
A3	ADD 249 DIM ECU 86114 DMS
A2	UPDATE TO I.R. ECU 86114 DMS
A1	UPDATE TO I.R. ECU 86114 DMS
2	REMOVE X ECU 102137
1	92/09/30 DMS

MOLEX INCORPORATED

CONNECTIONS SHOWN METRIC INCH

SCALE: 1:1

DATE: 30/03/08

REVISE ONLY ON CAD SYSTEM

PIN TERMINAL .125 (3,18) DIA.

SEE CHART SD-42824-40

MOLEX INCORPORATED

1 OF 2

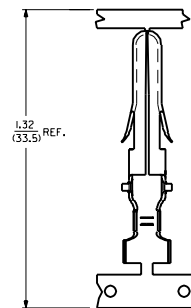
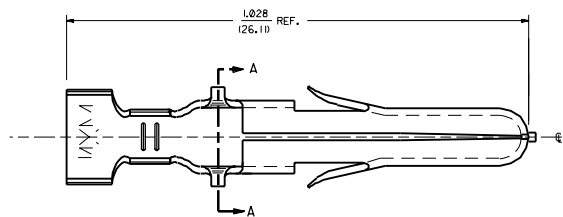
30/03/08

FOR ORDERING CONSULT REP/SALES/REP/125 TO PROPRIETARY

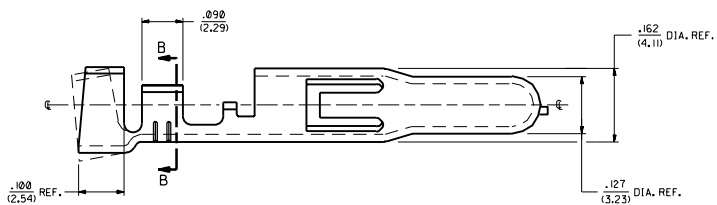
SCALE: 1:1

DATE: 30/03/08

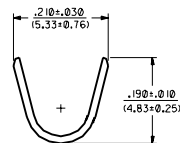
REVISE ONLY ON CAD SYSTEM



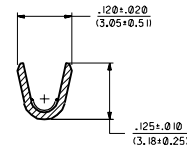
STRIP AND CARRIER LAYOUT  
SCALE 4:1



18 AWG TERMINAL SHOWN



INSULATION CRIMP DETAIL



SECTION B-B

B1	SEE SHEET 1
B	SEE SHEET 1
A4	SEE SHEET 1
A3	SEE SHEET 1
A2	SEE SHEET 1
A1	SEE SHEET 1
A	SEE SHEET 1

DRAWING SHEET NUMBER: 42824-40		REVISE ONLY ON CAD SYSTEM	
TITLE: PIN TERMINAL .125 (3.18) DIA.		DATE: 12/20/29	
MATERIALS:		MATERIALS:	
1 NAME: 1.028	2 NAME: 1.01	3 NAME: 1.013	4 NAME: 1.025
MATERIAL: TRM		MATERIAL: SBB	
SCALE: 8:1		SCALE: 8:1	
DRAWN: RWD		CHECKED: SBB	
DATE: 12/20/29		DATE: 12/20/29	
MATERIALS: TRM		MATERIALS: SBB	
SCALE: 8:1		SCALE: 8:1	
DRAWN: RWD		CHECKED: SBB	
DATE: 12/20/29		DATE: 12/20/29	

**MOLEX INCORPORATED** SHEET NO. 2 OF 2  
**SEE CHART SD-42824-40**  
 ALL DIMENSIONS UNLESS OTHERWISE SPECIFIED ARE IN INCHES  
 UNLESS NOTED OTHERWISE