



Chipsmall Limited consists of a professional team with an average of over 10 year of expertise in the distribution of electronic components. Based in Hongkong, we have already established firm and mutual-benefit business relationships with customers from,Europe,America and south Asia,supplying obsolete and hard-to-find components to meet their specific needs.

With the principle of “Quality Parts,Customers Priority,Honest Operation,and Considerate Service”,our business mainly focus on the distribution of electronic components. Line cards we deal with include Microchip,ALPS,ROHM,Xilinx,Pulse,ON,Everlight and Freescale. Main products comprise IC,Modules,Potentiometer,IC Socket,Relay,Connector.Our parts cover such applications as commercial,industrial, and automotives areas.

We are looking forward to setting up business relationship with you and hope to provide you with the best service and solution. Let us make a better world for our industry!



Contact us

Tel: +86-755-8981 8866 Fax: +86-755-8427 6832

Email & Skype: info@chipsmall.com Web: www.chipsmall.com

Address: A1208, Overseas Decoration Building, #122 Zhenhua RD., Futian, Shenzhen, China

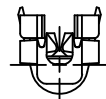
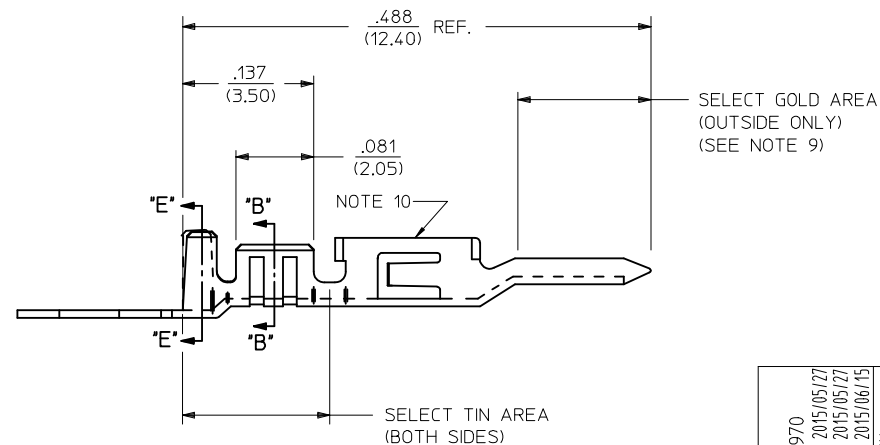
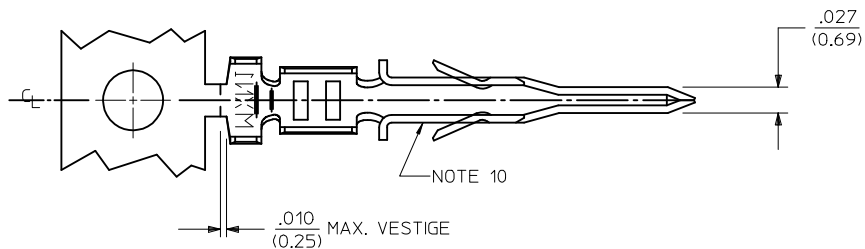




SECTION "B"-"B"


SECTION "E"-"E"

AWG:	MAX. INSULATION
20-24	.073/(1.85)
26-30	.050/(1.27)



NOTES:

- 1) MATERIAL: PHOSPHOR BRONZE ALLOY.
- 2) TERMINAL PLATING:
 - A = .000015/(0.00038) MIN. SELECT GOLD
.000100/(0.002543) MIN. SELECT TIN
OVER .000050/(0.00127) MIN. NICKEL
 - B = .000030/(0.00076) MIN. SELECT GOLD
.000100/(0.002543) MIN. SELECT TIN
OVER .000050/(0.00127) MIN. NICKEL
 - C = HOT TIN DIP: .000040/(0.00102) MIN
- *MATERIAL NUMBERS WITH SELECT PLATING ARE POST-PLATED AFTER FORMING.
- 3) PRODUCT SPECIFICATION: PS-43045, PS-43650, PS-44300-001.
- 4) PACKAGING SPECIFICATION: PK-43031-002 (REEL), PK-43030-003 (LOOSE).
- 5) TERMINAL FOR USE IN MICROFIT PLUG 43020-****, 43640-****, AND 44300-****.
- 6) FOR TERMINAL ORIENTATION IN PLUG SEE DRAWING SDA-43020-**** OR SD-43640-****.
- 7) THIS TERMINAL IS DESIGNED IN METRIC.
- 8) THE PRIMARY SHIPPING CARTON WILL BE LABELED: "COMPLIANT TO RoHS DIRECTIVE 2002/95/EC AND ELV ANNEX ii OF DIRECTIVE 2000/53/EC." ASSEMBLIES WILL BE COMPLIANT TO THE RoHS AND ELV (LED-FREE) DIRECTIVES.
- 9) SOME GOLD MAY BE PRESENT ON INSIDE SURFACE.
- 10) TERMINAL MAY HAVE AN INWARD OR OUTWARD FORMED SHAPE IN THIS AREA.

ADD NOTE 10 EC NO: UCP2015-4970 DRWN: JDFOX 2015/05/27 CHKD: SSOUSEK 2015/05/27 APPR: FSMITH 2015/06/15	DESCRIPTION	QUALITY SYMBOLS	GENERAL TOLERANCES (UNLESS SPECIFIED)		DIMENSION STYLE IN/MM		SCALE ---	DESIGN UNITS METRIC	 THIRD ANGLE PROJECTION	
				mm	INCH	DRAWN BY RHOLTS	DATE 2004/07/25	TITLE MICRO-FIT (3.0) MALE TERMINAL LEAD-FREE molex		
			4 PLACES	± ---	± ---	CHECKED BY LSCHMIDT	DATE 2004/07/25			
			3 PLACES	± ---	± .014	APPROVED BY	DATE			
			2 PLACES	± 0.25	± .010	FSMITH	2004/07/25			
			1 PLACE	± 0.35	± ---	MATERIAL NO.	DOCUMENT NO.			
			0 PLACE	±	±	SEE CHART		SD-43031-001		SHEET NO. 1 OF 1
			ANGULAR ±1/2°							
			DRAFT WHERE APPLICABLE MUST REMAIN WITHIN DIMENSIONS							
			REV	B5		THIS DRAWING CONTAINS INFORMATION THAT IS PROPRIETARY TO MOLEX INCORPORATED AND SHOULD NOT BE USED WITHOUT WRITTEN PERMISSION				