



Chipsmall Limited consists of a professional team with an average of over 10 year of expertise in the distribution of electronic components. Based in Hongkong, we have already established firm and mutual-benefit business relationships with customers from,Europe,America and south Asia,supplying obsolete and hard-to-find components to meet their specific needs.

With the principle of “Quality Parts,Customers Priority,Honest Operation,and Considerate Service”,our business mainly focus on the distribution of electronic components. Line cards we deal with include Microchip,ALPS,ROHM,Xilinx,Pulse,ON,Everlight and Freescale. Main products comprise IC,Modules,Potentiometer,IC Socket,Relay,Connector.Our parts cover such applications as commercial,industrial, and automotives areas.

We are looking forward to setting up business relationship with you and hope to provide you with the best service and solution. Let us make a better world for our industry!



Contact us

Tel: +86-755-8981 8866 Fax: +86-755-8427 6832

Email & Skype: info@chipsmall.com Web: www.chipsmall.com

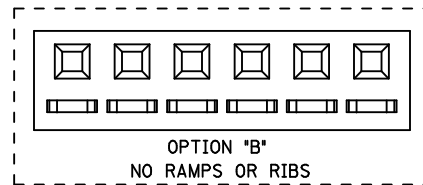
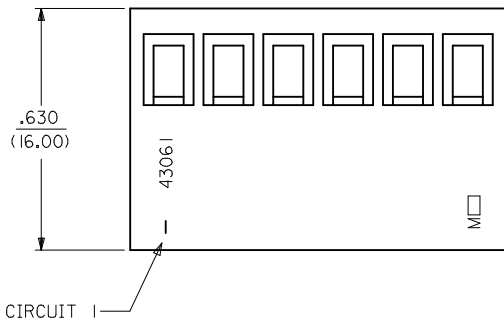
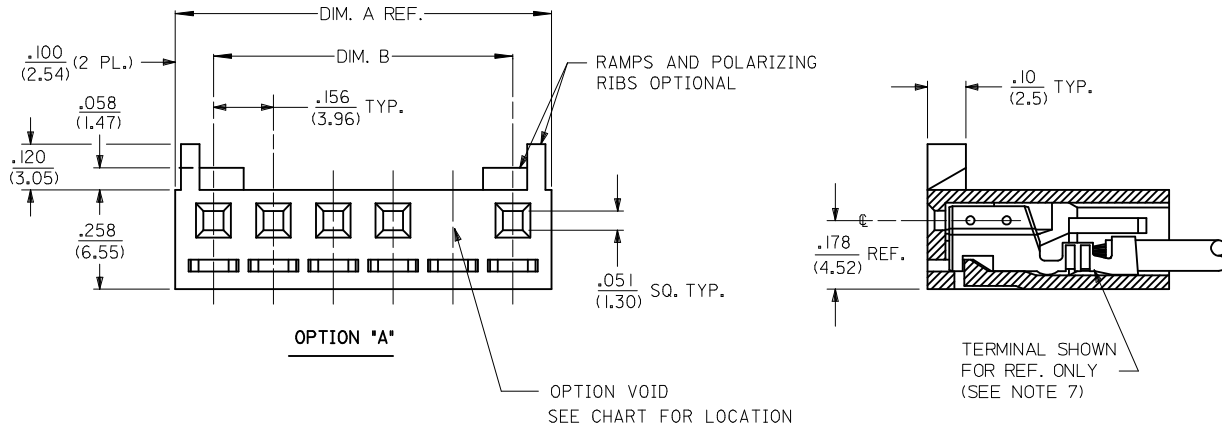
Address: A1208, Overseas Decoration Building, #122 Zhenhua RD., Futian, Shenzhen, China



NOTES:

- 1) MATERIAL: GLASS FILLED POLYESTER, 94V-0
MATERIAL NUMBERS 43061-0*** : COLOR - NATURAL
MATERIAL NUMBERS 43061-1*** : COLOR - BLACK
- 2) FINISH: SEE TERMINAL DWGS.
- 3) FOR ADDITIONAL HOUSING INFORMATION REFER TO DWG. NO. 5195 OR P.S. 5195.
FOR ADDITIONAL TERMINAL INFORMATION REFER TO DWG. NO. 5194 OR 5225, OR P.S. 5194 OR 5225.
- 4) PACKAGING SPECIFICATION: PK-43061-001
- 5) MATES WITH .156/(3.96) CENTER HEADERS AND .045/(1.14) SQUARE PINS.
- 6) CONNECTOR IS DESIGNED FOR USE WITH 18-28 AWG WIRE.
- 7) HOUSING IS DESIGNED FOR USE WITH 5194 (18-22 AWG) AND 5225 (24-28 AWG) TERMINALS.
- 8) THIS PART CONFORMS TO CLASS B REQUIREMENTS OF COSMETIC SPECIFICATION PS-45499-002.

NO. OF CKTS.	DIM. A	DIM. B
2	.357 (9.06)	.156 (3.96)
3	.513 (13.02)	.312 (7.92)
4	.669 (16.98)	.468 (11.88)
5	.824 (20.94)	.624 (15.84)
6	.980 (24.90)	.780 (19.80)
7	1.136 (28.86)	.935 (23.76)
8	1.292 (32.82)	1.091 (27.72)
9	1.448 (36.78)	1.247 (31.68)
10	1.604 (40.74)	1.403 (35.64)
11	1.760 (44.70)	1.560 (39.60)
12	1.916 (48.66)	1.715 (43.56)



2	F5
1	F5
SHT. REV.	

ADD 43061-0040 EC NO: UCP2013-2764 DRWN:MKIPPER 2013/01/08 CHKD:NGUYEN 2013/01/08 APPR:FSMLTH 2013/05/21	QUALITY SYMBOLS	GENERAL TOLERANCES (UNLESS SPECIFIED)		DIMENSION STYLE	SCALE	DESIGN UNITS	THIRD ANGLE PROJECTION
	▽=0	mm	INCH	IN/MM	4:1	INCH	
	▽=0	4 PLACES ± ---	± ---	DRAWN BY	DATE	TITLE	
	▽=0	3 PLACES ± ---	± .010	ROBERTS	1991/10/17	SPOX .156/(3.96) RECEPTACLE HOUSING	
	2 PLACES ± 0.25	± .014	CHECKED BY	DATE	molex		
	1 PLACE ± 0.35	± ---	PATEL	1991/10/17	SD-43061		SHEET NO. 1 OF 2
	0 PLACE ±	±	APPROVED BY	DATE	DOCUMENT NO.		
			LENZ	1991/10/17	SEE CHART		
			ANGULAR ±1/2°		MATERIAL NO.		
			DRAFT WHERE APPLICABLE MUST REMAIN WITHIN DIMENSIONS		SIZE		
					C THIS DRAWING CONTAINS INFORMATION THAT IS PROPRIETARY TO MOLEX INCORPORATED AND SHOULD NOT BE USED WITHOUT WRITTEN PERMISSION		

13			12			11			10			9			8			7			6			5			4			3			2			1		
HOUSING OPTION: A						HOUSING OPTION: A						HOUSING OPTION: B						HOUSING OPTION: B																				
COLOR WHITE						COLOR BLACK						COLOR WHITE						COLOR BLACK																				
NO. OF CKTS	MATERIAL NO	VOID LOC	NO. OF CKTS	MATERIAL NO	VOID LOC	NO. OF CKTS	MATERIAL NO	VOID LOC	NO. OF CKTS	MATERIAL NO	VOID LOC	NO. OF CKTS	MATERIAL NO	VOID LOC	NO. OF CKTS	MATERIAL NO	VOID LOC	NO. OF CKTS	MATERIAL NO	VOID LOC	NO. OF CKTS	MATERIAL NO	VOID LOC	NO. OF CKTS	MATERIAL NO	VOID LOC	NO. OF CKTS	MATERIAL NO	VOID LOC	NO. OF CKTS	MATERIAL NO	VOID LOC						
2	43061-0002		2	43061-1002		2	43061-0013		2	43061-1013		2	43061-1013		2	43061-1013																						
3	43061-0003		3	43061-1003		3	43061-0014		3	43061-1014		3	43061-1014		3	43061-1014																						
4	43061-0004		4	43061-1004		4	43061-0015		4	43061-1015		4	43061-1015		4	43061-1015																						
5	43061-0005		5	43061-1005		5	43061-0016		5	43061-1016		5	43061-1016		5	43061-1016																						
6	43061-0006		6	43061-1006		6	43061-0017		6	43061-1017		6	43061-1017		6	43061-1017																						
7	43061-0007		7	43061-1007		7	43061-0018		7	43061-1018		7	43061-1018		7	43061-1018																						
8	43061-0008		8	43061-1008		8	43061-0019		8	43061-1019		8	43061-1019		8	43061-1019																						
9	43061-0009		9	43061-1009		9	43061-0020		9	43061-1020		9	43061-1020		9	43061-1020																						
10	43061-0010		10	43061-1010		10	43061-0021		10	43061-1021		10	43061-1021		10	43061-1021																						
11	43061-0011		11	43061-1011		11	43061-0022		11	43061-1022		11	43061-1022		11	43061-1022																						
12	43061-0012		12	43061-1012		12	43061-0023		12	43061-1023		12	43061-1023		12	43061-1023																						
5	43061-0030	3	5	43061-1030	3																																	
7	43061-0031	4	7	43061-1031	4																																	
9	43061-0032	5	9	43061-1032	5																																	
8	43061-0033	7	8	43061-1033	7																																	
9	43061-0034	7	9	43061-1034	7																																	
5	43061-0035	4	5	43061-1035	4																																	
8	43061-0036	2																																				
7	43061-0037	2, 5, 6																																				
7	43061-0038	1, 3, 5																																				
7	43061-0039	3, 5, 7																																				
7	43061-0040	3, 6																																				

SEE SHEET 1 EC NO: UCP2013-2764 DRAWN: KIPPER 2013/01/08 CHKD: NGUYEN 2013/01/08 APPR: F. SMITH 2013/05/21	QUALITY SYMBOLS	GENERAL TOLERANCES (UNLESS SPECIFIED)	DIMENSION STYLE	SCALE	DESIGN UNITS	THIRD ANGLE PROJECTION											
	$\nabla = 0$ $\nabla = 0$ $\nabla = 0$	<table border="1"> <tr><th>mm</th><th>INCH</th></tr> <tr><td>4 PLACES ± ---</td><td>± ---</td></tr> <tr><td>3 PLACES ± ---</td><td>± ---</td></tr> <tr><td>2 PLACES ± ---</td><td>± ---</td></tr> <tr><td>1 PLACE ± ---</td><td>± ---</td></tr> <tr><td>0 PLACE ±</td><td>±</td></tr> </table>	mm	INCH	4 PLACES ± ---		± ---	3 PLACES ± ---	± ---	2 PLACES ± ---	± ---	1 PLACE ± ---	± ---	0 PLACE ±	±	IN/MM	4:1
	mm	INCH															
	4 PLACES ± ---	± ---															
	3 PLACES ± ---	± ---															
2 PLACES ± ---	± ---																
1 PLACE ± ---	± ---																
0 PLACE ±	±																
	DRAWN BY: ROBERTS DATE: 1991/11/06 CHECKED BY: PATEL DATE: 1991/11/06 APPROVED BY: LENZ DATE: 1991/11/06	TITLE		SPOX .156/(3,96) RECEPTACLE HOUSING													
	MATERIAL NO. SEE CHART DRAFT WHERE APPLICABLE MUST REMAIN WITHIN DIMENSIONS	DOCUMENT NO. SD-43061		SHEET NO. 2 OF 2													
	THIS DRAWING CONTAINS INFORMATION THAT IS PROPRIETARY TO MOLEX INCORPORATED AND SHOULD NOT BE USED WITHOUT WRITTEN PERMISSION																