



Chipsmall Limited consists of a professional team with an average of over 10 year of expertise in the distribution of electronic components. Based in Hongkong, we have already established firm and mutual-benefit business relationships with customers from,Europe,America and south Asia,supplying obsolete and hard-to-find components to meet their specific needs.

With the principle of “Quality Parts,Customers Priority,Honest Operation,and Considerate Service”,our business mainly focus on the distribution of electronic components. Line cards we deal with include Microchip,ALPS,ROHM,Xilinx,Pulse,ON,Everlight and Freescale. Main products comprise IC,Modules,Potentiometer,IC Socket,Relay,Connector.Our parts cover such applications as commercial,industrial, and automotives areas.

We are looking forward to setting up business relationship with you and hope to provide you with the best service and solution. Let us make a better world for our industry!



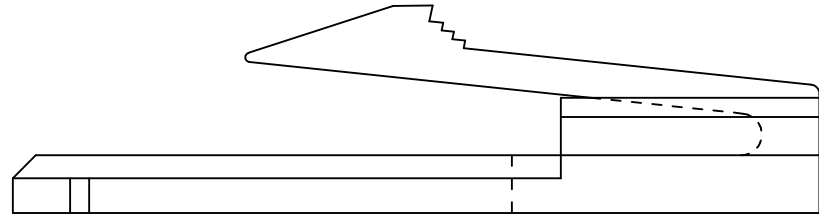
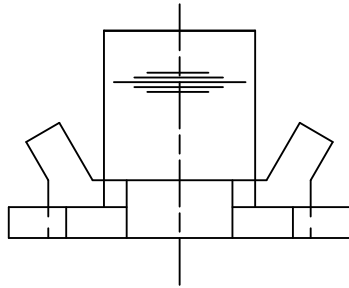
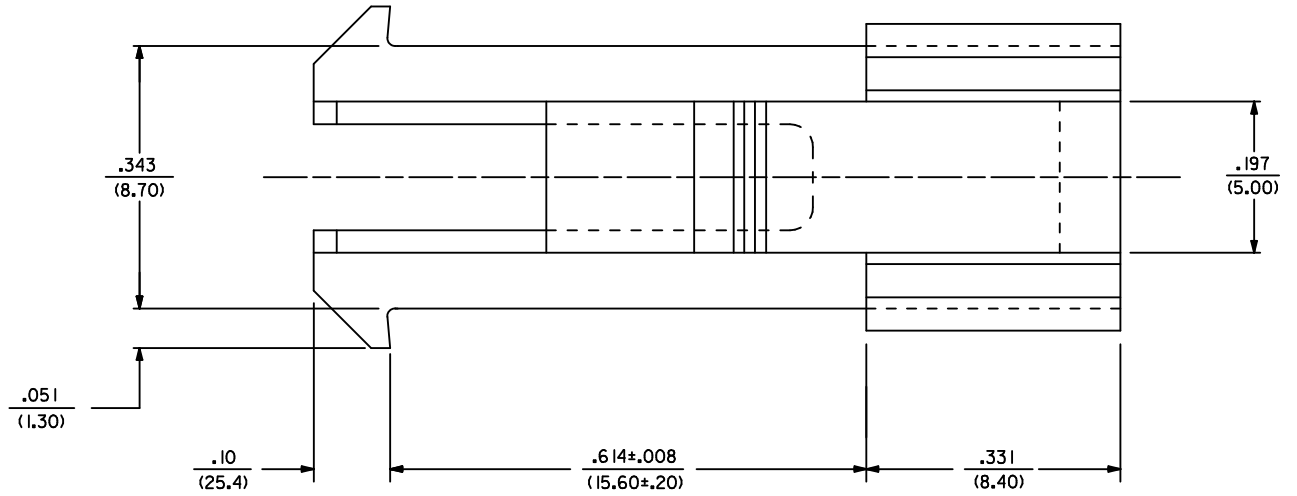
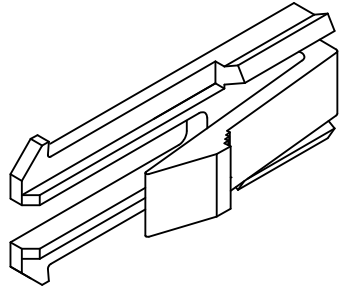
Contact us

Tel: +86-755-8981 8866 Fax: +86-755-8427 6832

Email & Skype: info@chipsmall.com Web: www.chipsmall.com


Address: A1208, Overseas Decoration Building, #122 Zhenhua RD., Futian, Shenzhen, China





NOTES:

- 1) MATERIAL: UNFILLED POLYESTER, U.L. 94V-0, COLOR: BLACK.
- 2) PART IS FOR USE WITH PLUG HOUSING 30068.
- 3) PRODUCT SPECIFICATION: PS-5556-003.
- 4) PACKAGING SPECIFICATION: PK-43130-001.

ADDED PK-43130-001 EC NO: UCP2010-2159 DRWN: JAGUILAR 2010/02/25 CHKD: J.BELL 2010/02/25 APPR: FSMITH 2010/03/08 REV B1	DESCRIPTION	QUALITY SYMBOLS <div>▽=0</div> <div>▽=0</div> <div>▽=0</div>	GENERAL TOLERANCES (UNLESS SPECIFIED)			DIMENSION STYLE IN/MM		SCALE 8:1	DESIGN UNITS INCH	 THIRD ANGLE PROJECTION
						DRAWN BY RJF	DATE 10/13/1992	TITLE MOUNTING EAR FOR PLUG HOUSING. (MINI-FIT T.P.A. SERIES)		
			4 PLACES ± --- ± ---			CHECKED BY RJF	DATE 10/13/1992	MOLEX MOLEX INCORPORATED		
			3 PLACES ± --- ± .010							
			2 PLACES ± 0.25 ± .015			APPROVED BY FSMITH	DATE 10/13/1992			
			1 PLACE ± 0.38 ± ---							
			ANGULAR ± 1/2°			MATERIAL NO. 43130-0001		DOCUMENT NO. SD-43130-0001		SHEET NO. 1 OF 1
			DRAFT WHERE APPLICABLE MUST REMAIN WITHIN DIMENSIONS			THIS DRAWING CONTAINS INFORMATION THAT IS PROPRIETARY TO MOLEX INCORPORATED AND SHOULD NOT BE USED WITHOUT WRITTEN PERMISSION				