



Chipsmall Limited consists of a professional team with an average of over 10 year of expertise in the distribution of electronic components. Based in Hongkong, we have already established firm and mutual-benefit business relationships with customers from,Europe,America and south Asia,supplying obsolete and hard-to-find components to meet their specific needs.

With the principle of “Quality Parts,Customers Priority,Honest Operation,and Considerate Service”,our business mainly focus on the distribution of electronic components. Line cards we deal with include Microchip,ALPS,ROHM,Xilinx,Pulse,ON,Everlight and Freescale. Main products comprise IC,Modules,Potentiometer,IC Socket,Relay,Connector.Our parts cover such applications as commercial,industrial, and automotives areas.

We are looking forward to setting up business relationship with you and hope to provide you with the best service and solution. Let us make a better world for our industry!



Contact us

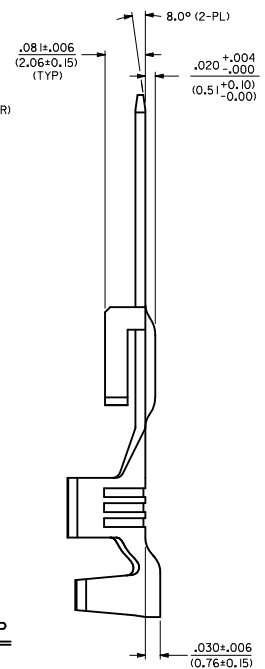
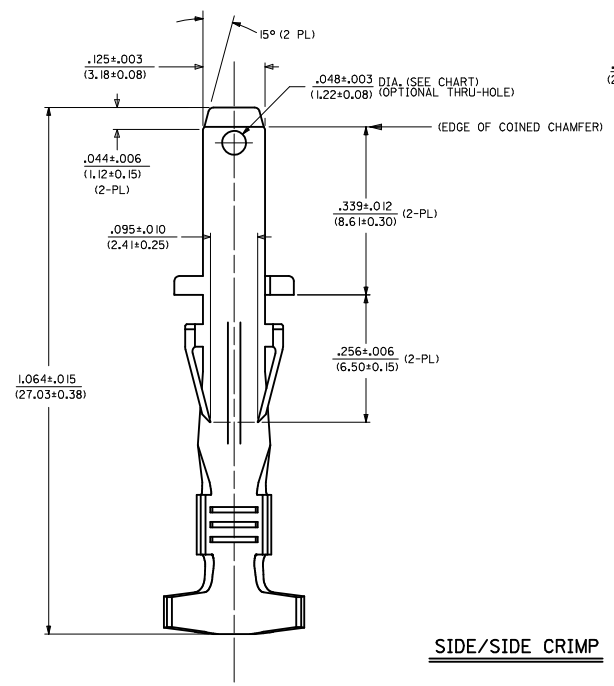
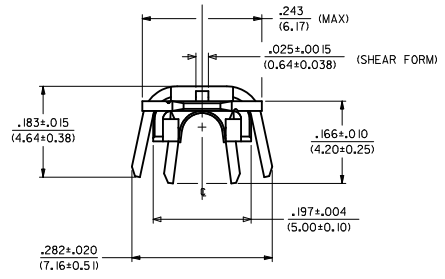
Tel: +86-755-8981 8866 Fax: +86-755-8427 6832

Email & Skype: info@chipsmall.com Web: www.chipsmall.com

Address: A1208, Overseas Decoration Building, #122 Zhenhua RD., Futian, Shenzhen, China



MATERIAL NUMBER	FINISH	HOLE
43178-3001	999	NOT USED
43178-3002	H901	NOT USED
43178-3003	F542	NOT USED



SIDE/SIDE CRIMP

NOTES

- MATERIAL: BRASS
- FINISH:
999 - UNPLATED
H901 - 20 MICROINCH MIN. HOT TIN DIP
F542 - 15 MICROINCH MIN. SELECT GOLD IN CONTACT AREA, 50 MICROINCH TIN-LEAD IN CRIMP AREA, NICKEL UNDERPLATE OVERALL.
- PRODUCT SPECIFICATION: PS-44441-001
- TERMINAL FOR USE WITH:
DOUBLE 18 AWG. UL 1015 STYLE WIRE (CRIMPED SIDE X SIDE)

REVISE NOTE #4 IEC NO. UCP2010-2241 DRAWN: HAH 2010/03/03 CHYD: JRELL 2010/03/03 APPR: FSWITH 2010/03/17	QUALITY SYMBOLS ▽=0 ▽=0 ▽=0	GENERAL TOLERANCES (UNLESS SPECIFIED)		DIMENSION STYLE IN/MM		SCALE 8:1	DESIGN UNITS INCH	THIRD ANGLE PROJECTION	
		4 PLACES ±.010 ±.010 3 PLACES ±.025 ±.014 2 PLACES ±0.35 ±.014 1 PLACE ±0.35 ±.014	mm INCH	DRAWN BY MAB	DATE 1995/06/16	TITLE TERMINAL, CRIMP MALE TAB .125/(3.18)X.020/(0.51) SABRE - F.B.S. - T.P.A.			
		ANGULAR ±1/2°		CHECKED BY KBP	DATE 1995/06/16	APPROVED BY FSMASH			
		DRAFT WHERE APPLICABLE MUST REMAIN WITHIN DIMENSIONS		MATERIAL NO. SEE CHART	DATE 2010/09/16	MOLEX INCORPORATED			
				MATERIAL NO. SD-43178-3***		DOCUMENT NO.		SHEET NO. 1 OF 1	