



Chipsmall Limited consists of a professional team with an average of over 10 year of expertise in the distribution of electronic components. Based in Hongkong, we have already established firm and mutual-benefit business relationships with customers from,Europe,America and south Asia,supplying obsolete and hard-to-find components to meet their specific needs.

With the principle of “Quality Parts,Customers Priority,Honest Operation,and Considerate Service”,our business mainly focus on the distribution of electronic components. Line cards we deal with include Microchip,ALPS,ROHM,Xilinx,Pulse,ON,Everlight and Freescale. Main products comprise IC,Modules,Potentiometer,IC Socket,Relay,Connector.Our parts cover such applications as commercial,industrial, and automotives areas.

We are looking forward to setting up business relationship with you and hope to provide you with the best service and solution. Let us make a better world for our industry!



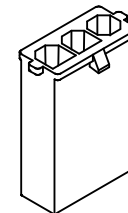
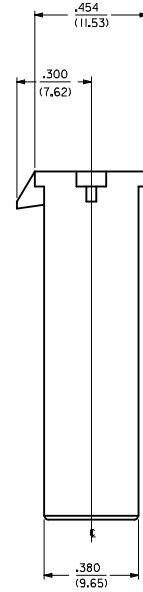
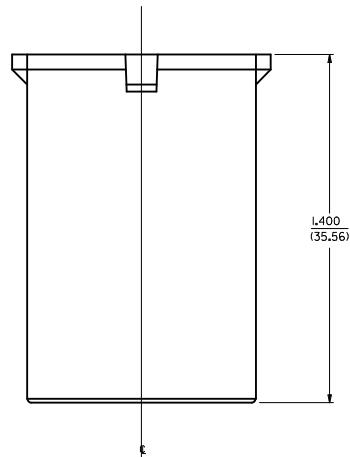
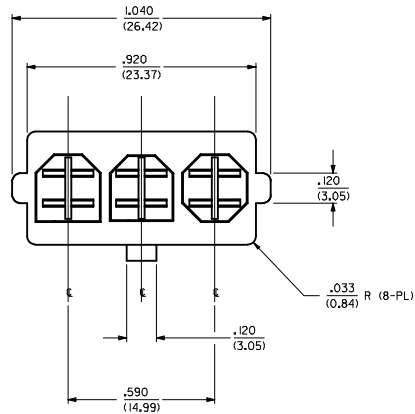
Contact us

Tel: +86-755-8981 8866 Fax: +86-755-8427 6832

Email & Skype: info@chipsmall.com Web: www.chipsmall.com

Address: A1208, Overseas Decoration Building, #122 Zhenhua RD., Futian, Shenzhen, China





NOTES:-

1. MATERIAL: A: NYLON UL 94V-2 , COLOR: NATURAL.
B: NYLON UL 94V-2 , COLOR: RED
2. FINISH: NONE.
3. PRODUCT SPECS: PSX-43335-9999.
4. PACKAGING SPECS: PK-43180-001.
5. ALL DIMENSIONS ARE FOR REFERENCE ONLY.
6. THIS CONNECTOR HOUSING FOR USE WITH 43178-**** TERMINALS.
7. THIS CONNECTOR HOUSING WILL MATE TO 43335-****3, 43179-****3 AND 44441-***3 HOUSINGS.
8. PARTS CONFORM TO CLASS 'B' REQUIREMENTS OF COSMETIC SPECIFICATION PS-45499-002.

PART NO.	MATERIAL	COLOR
43180-0013	UL 94V-2, NYLON	RED
43180-5013	UL 94V-2, NYLON	NATURAL

ADD P/N 43180-5013 IEC NO. UCF2010-0356 DRAWN:ELHAG 2009/08/10 CHKD:JBELL 2009/08/14 APPR:FSMTH 2009/08/14 A1	QUALITY SYMBOLS	GENERAL TOLERANCES (UNLESS SPECIFIED)	DIMENSION STYLE	SCALE	DESIGN UNITS	THIRD ANGLE PROJECTION																													
	$\nabla=0$ $\nabla=0$	<table border="1"> <tr> <th></th> <th>mm</th> <th>INCH</th> </tr> <tr> <td>4 PLACES</td> <td>± .10</td> <td>± .004</td> </tr> <tr> <td>3 PLACES</td> <td>± .15</td> <td>± .006</td> </tr> <tr> <td>2 PLACES</td> <td>± .25</td> <td>± .010</td> </tr> <tr> <td>1 PLACE</td> <td>± .36</td> <td>± .014</td> </tr> </table>		mm	INCH	4 PLACES	± .10	± .004	3 PLACES	± .15	± .006	2 PLACES	± .25	± .010	1 PLACE	± .36	± .014	<table border="1"> <tr> <th colspan="2">IN/MM</th> </tr> <tr> <td>DRAWN BY</td> <td>DATE</td> </tr> <tr> <td>ES</td> <td>09/19/2000</td> </tr> <tr> <td>CHECKED BY</td> <td>DATE</td> </tr> <tr> <td>RE</td> <td>09/19/2000</td> </tr> <tr> <td>APPROVED BY</td> <td>DATE</td> </tr> <tr> <td>RE</td> <td>09/19/2000</td> </tr> </table>	IN/MM		DRAWN BY	DATE	ES	09/19/2000	CHECKED BY	DATE	RE	09/19/2000	APPROVED BY	DATE	RE	09/19/2000	4:1	INCH	
		mm	INCH																																
	4 PLACES	± .10	± .004																																
3 PLACES	± .15	± .006																																	
2 PLACES	± .25	± .010																																	
1 PLACE	± .36	± .014																																	
IN/MM																																			
DRAWN BY	DATE																																		
ES	09/19/2000																																		
CHECKED BY	DATE																																		
RE	09/19/2000																																		
APPROVED BY	DATE																																		
RE	09/19/2000																																		
DRAFT WHERE APPLICABLE MUST REMAIN WITHIN DIMENSIONS	MATERIAL NO. SEE CHART SIZE D	TITLE 3-CIR PLUG HOUSING .125/(3.18)X.020/(0.51) FLAT BLADE SYS. - T.P.A.		MOLEX INCORPORATED DOCUMENT NO. SD-43180-0013	SHEET NO. 1 OF 1																														