



Chipsmall Limited consists of a professional team with an average of over 10 year of expertise in the distribution of electronic components. Based in Hongkong, we have already established firm and mutual-benefit business relationships with customers from,Europe,America and south Asia,supplying obsolete and hard-to-find components to meet their specific needs.

With the principle of “Quality Parts,Customers Priority,Honest Operation,and Considerate Service”,our business mainly focus on the distribution of electronic components. Line cards we deal with include Microchip,ALPS,ROHM,Xilinx,Pulse,ON,Everlight and Freescale. Main products comprise IC,Modules,Potentiometer,IC Socket,Relay,Connector.Our parts cover such applications as commercial,industrial, and automotives areas.

We are looking forward to setting up business relationship with you and hope to provide you with the best service and solution. Let us make a better world for our industry!



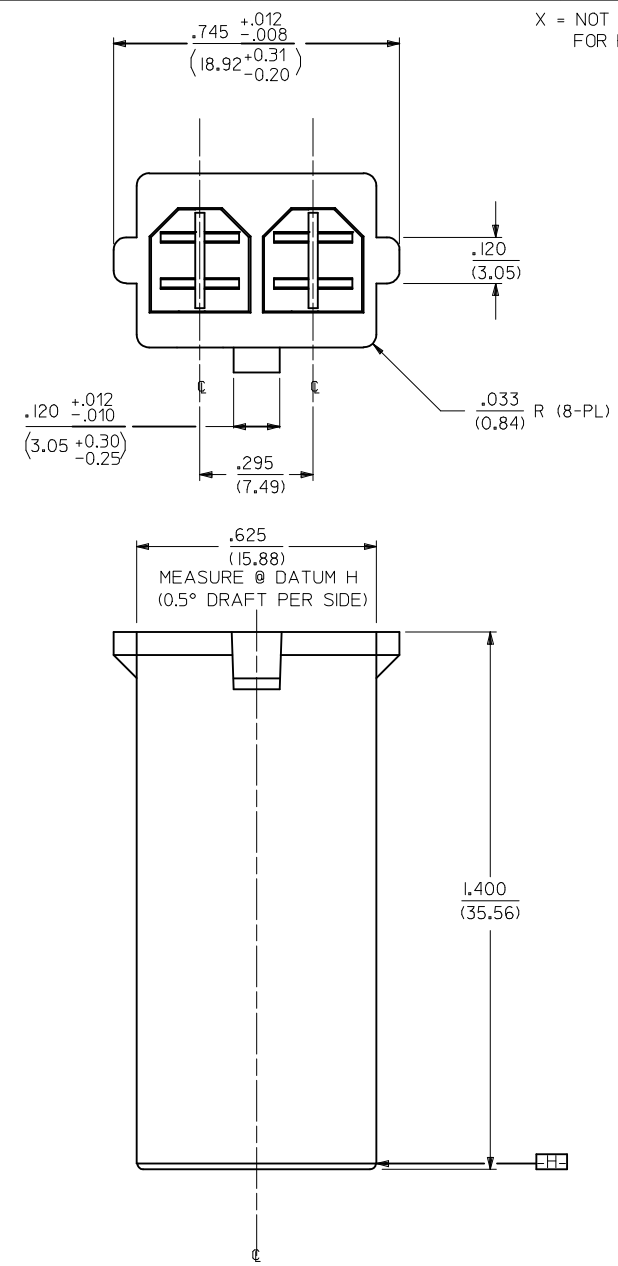
Contact us

Tel: +86-755-8981 8866 Fax: +86-755-8427 6832

Email & Skype: info@chipsmall.com Web: www.chipsmall.com

Address: A1208, Overseas Decoration Building, #122 Zhenhua RD., Futian, Shenzhen, China

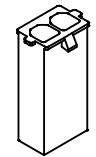
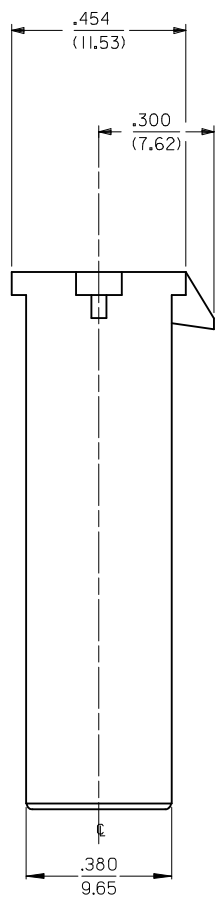




X = NOT RELEASED FOR PRODUCTION

ITEM NUMBER	MATERIAL (SEE NOTE 1)	COLOR
43180-1002	A	NATURAL
X 43180-2002	B	BLACK
OBSOLETE 43180-3002	A	RED
43180-4002	A	BLUE
43180-5002	C	BLACK
43180-6002	D	NATURAL

- NOTES:
- MATERIAL: A: NYLON PA66, 94V-2, COLOR: SEE CHART.
B: NYLON, PA 66/6, 94V-0, COLOR: BLACK
C: UL94V-0, PA6 NYLON, IEC 60335-1, 4TH EDITION GLOW WIRE CAPABLE.
D: NYLON 66, UL94V-0, COLOR: NATURAL.
 - FINISH: NONE
 - PRODUCT SPECIFICATION: PSX-43335-9999.
 - PACKAGING SPECIFICATION: PK-43180-001.
 - THIS CONNECTOR HOUSING FOR USE WITH 43178-**** TERMINALS.
 - THIS CONNECTOR HOUSING WILL MATE TO 43335-****, 43179-***2, AND 44441-***2 HOUSINGS.
 - ALL DIMENSIONS ARE FOR REFERENCE ONLY.
 - PARTS CONFORM TO CLASS B REQUIREMENTS OF COSMETIC SPECIFICATION PS-45499-002 EXCEPT MATERIAL OPTION 'C' MEETS CLASS 'C' REQUIREMENTS FOR SINK AND DISCOLORATION.



SD-43180-002
SCALE 2:1

REVISE TOLERANCES EC NO: UCP2012-4200 DRW: AELHAG CHKD: JBELL APPR: FSMITH	2012/08/30 2012/08/30 2012/09/11	DESCRIPTION QUALITY SYMBOLS ▽=0 ▽=0	GENERAL TOLERANCES (UNLESS SPECIFIED)		DIMENSION STYLE IN/MM		SCALE 1:1	DESIGN UNITS INCH	THIRD ANGLE PROJECTION			
			4 PLACES ± --- ± ---	3 PLACES ± --- ± .010	2 PLACES ± 0.25 ± .015	1 PLACE ± 0.38 ± ---	DRAWN BY MAB	DATE 1995/08/09	TITLE 2-CIR PLUG HOUSING .125/(3.18)X .020/(0.51) FLAT BLADE SYS. - T.P.A.			
			ANGULAR ± 1/2°				CHECKED BY KBP	DATE 1995/08/09	MOLEX INCORPORATED			
			DRAFT WHERE APPLICABLE MUST REMAIN WITHIN DIMENSIONS				APPROVED BY RAS	DATE 1995/08/09	MATERIAL NO. SEE CHART	DOCUMENT NO. SD-43180-002	SHEET NO. 1 OF 1	

THIS DRAWING CONTAINS INFORMATION THAT IS PROPRIETARY TO MOLEX INCORPORATED AND SHOULD NOT BE USED WITHOUT WRITTEN PERMISSION