



Chipsmall Limited consists of a professional team with an average of over 10 year of expertise in the distribution of electronic components. Based in Hongkong, we have already established firm and mutual-benefit business relationships with customers from,Europe,America and south Asia,supplying obsolete and hard-to-find components to meet their specific needs.

With the principle of “Quality Parts,Customers Priority,Honest Operation,and Considerate Service”,our business mainly focus on the distribution of electronic components. Line cards we deal with include Microchip,ALPS,ROHM,Xilinx,Pulse,ON,Everlight and Freescale. Main products comprise IC,Modules,Potentiometer,IC Socket,Relay,Connector.Our parts cover such applications as commercial,industrial, and automotives areas.

We are looking forward to setting up business relationship with you and hope to provide you with the best service and solution. Let us make a better world for our industry!



## Contact us

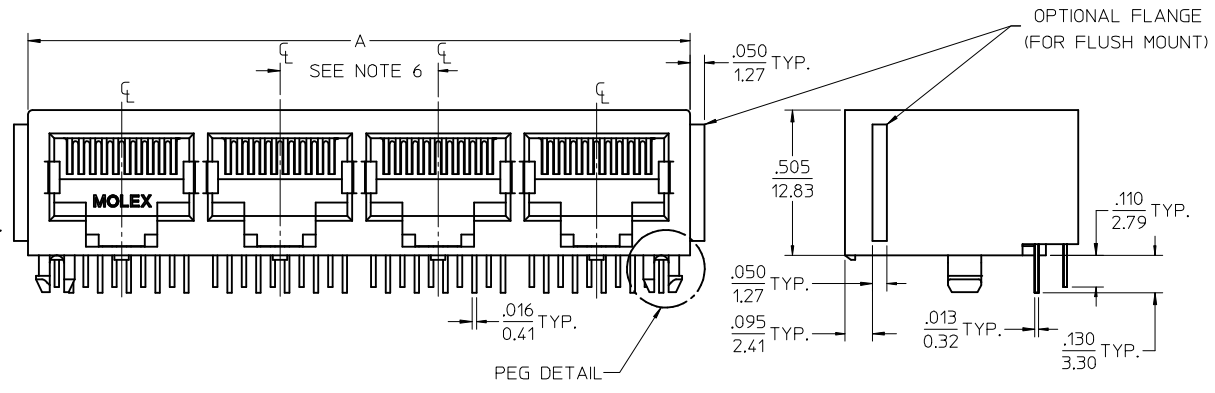
Tel: +86-755-8981 8866 Fax: +86-755-8427 6832

Email & Skype: info@chipsmall.com Web: www.chipsmall.com

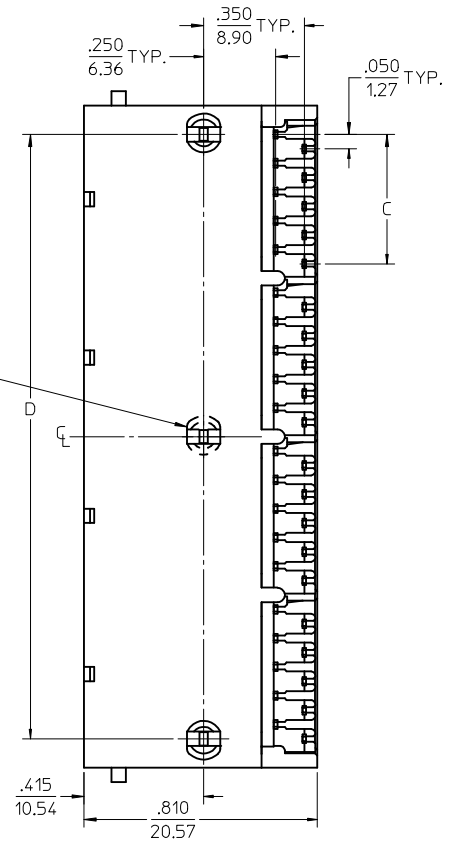
Address: A1208, Overseas Decoration Building, #122 Zhenhua RD., Futian, Shenzhen, China



- NOTES:
- 1) MATERIAL:  
HOUSING: GLASS FILLED NYLON, UL94V-0, COLOR: BLACK  
INSULATOR: GLASS FILLED NYLON, UL94V-0, COLOR: BLACK  
TERMINALS: PHOSPHOR BRONZE: .012/(0.30) THICK
  - 2) FINISH:  
TERMINALS:  
SELECT GOLD IN CONTACT AREA: 50 MICROINCHES (1.27 MICROMETERS) MIN.,  
SELECT TIN IN PC TAIL AREA: 100 MICROINCHES (2.54 MICROMETERS) MIN.,  
WITH OVERALL NICKEL UNDERPLATE: 50 MICROINCHES (1.27 MICROMETERS) MIN.
  - 3) PRODUCT SPECIFICATION AND PROCESSING PARAMETERS: PS-43223-001.
  - 4) PACKAGING SPECIFICATION:  
UNSHIELDED CONNECTOR ASSEMBLIES PACKAGED IN TRAYS PER MOLEX  
PACKAGING SPECIFICATION PK-43249-004.
  - 5) SEE SHEETS 3-4 FOR P.C. BOARD LAYOUTS.
  - 6) FOR 6 CIRCUIT JACKS CENTERLINE TO CENTERLINE SPACING IS .448/(11.38),  
FOR 8 CIRCUIT JACKS CENTERLINE TO CENTERLINE SPACING IS .550/(13.97).
  - 7) ALL UNTOLERANCED DIMENSIONS ARE SHOWN FOR REFERENCE ONLY.
  - 8) THE PRIMARY SHIPPING CARTON WILL BE LABELED, "COMPLIANT TO  
RoHS DIRECTIVE 2002/95/EC AND ELV ANNEX II OF DIRECTIVE 2000/53/EC."  
ASSEMBLIES WILL BE COMPLIANT TO THE RoHS AND ELV (LEAD-FREE) DIRECTIVES.
  - 9) THIS PART CONFORMS TO CLASS B REQUIREMENTS OF COSMETIC SPECIFICATION  
PS-45499-002.

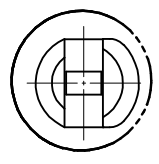
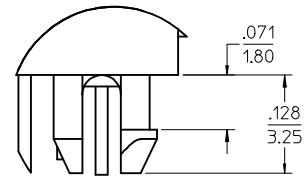


4 PORT 8 LOADED 10 JACK  
W/ SNAP-FIT PEGS SHOWN



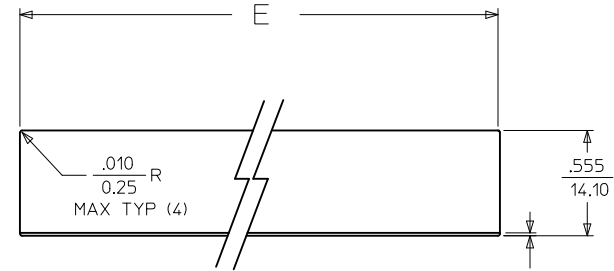
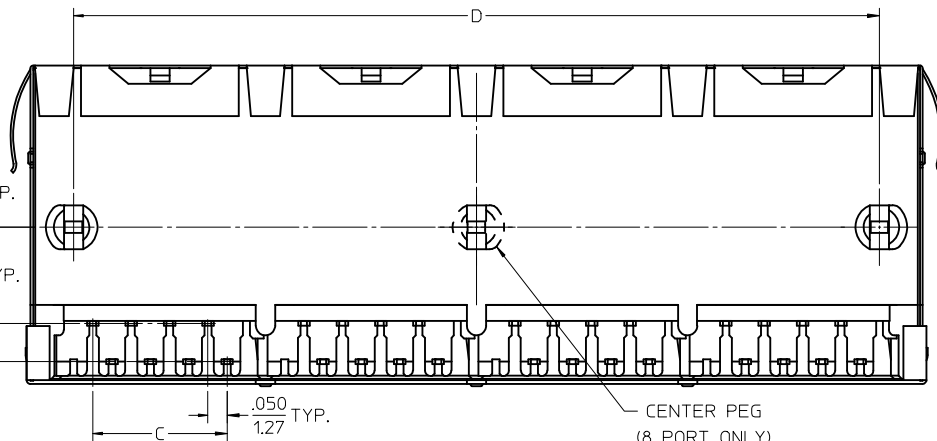
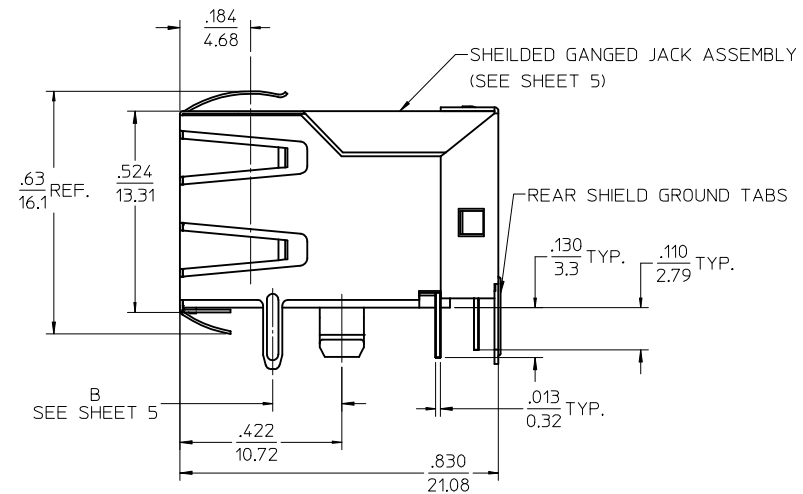
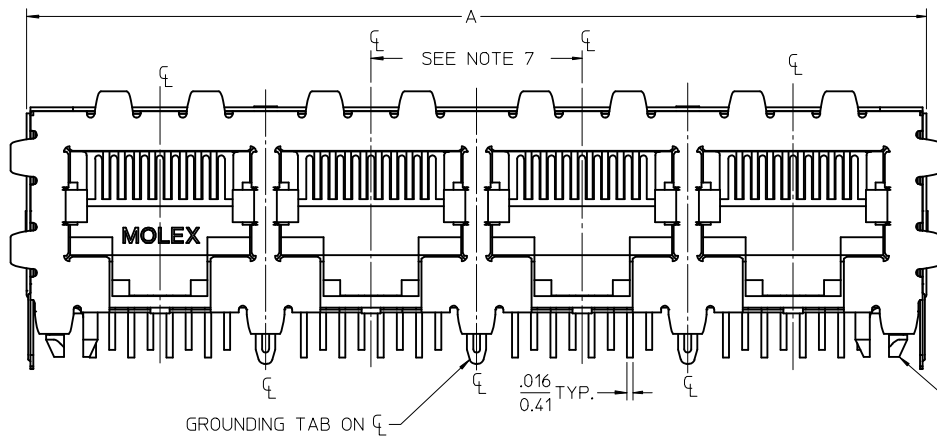
6 CIRCUIT HOUSING					
CIRCUIT SIZE	NO. OF PORTS	DIM. A	DIM. C	DIM. D	
6	2	.985 (25.02)	.250 (6.35)	.848 (21.54)	
4	2	.985 (25.02)	.150 (3.81)	.848 (21.54)	
2	2	.985 (25.02)	.050 (1.27)	.848 (21.54)	
6	3	1.433 (36.40)	.250 (6.35)	1.296 (32.92)	
4	3	1.433 (36.40)	.150 (3.81)	1.296 (32.92)	
2	3	1.433 (36.40)	.050 (1.27)	1.296 (32.92)	
6	4	1.881 (47.78)	.250 (6.35)	1.744 (44.30)	
4	4	1.881 (47.78)	.150 (3.81)	1.744 (44.30)	
2	4	1.881 (47.78)	.050 (1.27)	1.744 (44.30)	
6	5	2.329 (59.16)	.250 (6.35)	2.192 (55.68)	
4	5	2.329 (59.16)	.150 (3.81)	2.192 (55.68)	
2	5	2.329 (59.16)	.050 (1.27)	2.192 (55.68)	
6	6	2.777 (70.54)	.250 (6.35)	2.640 (67.06)	
4	6	2.777 (70.54)	.150 (3.81)	2.640 (67.06)	
2	6	2.777 (70.54)	.050 (1.27)	2.640 (67.06)	
6	8	3.673 (93.29)	.250 (6.35)	3.536 (89.81)	
4	8	3.673 (93.29)	.150 (3.81)	3.536 (89.81)	
2	8	3.673 (93.29)	.050 (1.27)	3.536 (89.81)	

8 CIRCUIT HOUSING					
CIRCUIT SIZE	NO. OF PORTS	DIM. A	DIM. C	DIM. D	
10	2	1.200 (30.48)	.450 (11.43)	1.000 (25.40)	
8	2	1.200 (30.48)	.350 (8.89)	1.000 (25.40)	
6	2	1.200 (30.48)	.250 (6.35)	1.000 (25.40)	
10	3	1.750 (44.45)	.450 (11.43)	1.550 (39.37)	
8	3	1.750 (44.45)	.350 (8.89)	1.550 (39.37)	
6	3	1.750 (44.45)	.250 (6.35)	1.550 (39.37)	
4	3	1.750 (44.45)	.150 (3.81)	1.550 (39.37)	
10	4	2.300 (58.42)	.450 (11.43)	2.100 (53.34)	
8	4	2.300 (58.42)	.350 (8.89)	2.100 (53.34)	
4	4	2.300 (58.42)	.150 (3.81)	2.100 (53.34)	
4	5	2.850 (72.39)	.150 (3.81)	2.650 (67.31)	
10	5	2.850 (72.39)	.450 (11.43)	2.650 (67.31)	
8	5	2.850 (72.39)	.350 (8.89)	2.650 (67.31)	
10	6	3.400 (86.36)	.450 (11.43)	3.200 (81.28)	
8	6	3.400 (86.36)	.350 (8.89)	3.200 (81.28)	
10	8	4.500 (114.30)	.450 (11.43)	4.300 (109.22)	
8	8	4.500 (114.30)	.350 (8.89)	4.300 (109.22)	



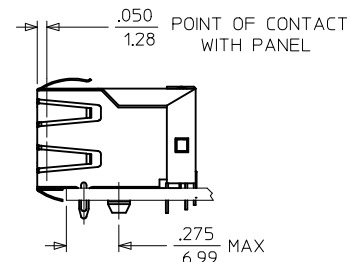
PEG DETAIL  
SCALE 8:1

<b>OBsolete PN</b> EC NO: UCP2017-06/15 DRW:WAFENG02 2016/09/19 CHKD: APPR:KLANG 2016/09/28 REV: A10	QUALITY SYMBOLS 	GENERAL TOLERANCES (UNLESS SPECIFIED) <table border="1"> <tr> <th></th> <th>mm</th> <th>INCH</th> </tr> <tr> <td>4 PLACES</td> <td>± .10</td> <td>± .004</td> </tr> <tr> <td>3 PLACES</td> <td>± .15</td> <td>± .005</td> </tr> <tr> <td>2 PLACES</td> <td>± 0.38</td> <td>± .015</td> </tr> <tr> <td>1 PLACE</td> <td>± .76</td> <td>± .030</td> </tr> </table>		mm	INCH	4 PLACES	± .10	± .004	3 PLACES	± .15	± .005	2 PLACES	± 0.38	± .015	1 PLACE	± .76	± .030	DIMENSION STYLE <b>IN/MM</b>	SCALE <b>3:1</b>	DESIGN UNITS <b>INCH</b>	THIRD ANGLE PROJECTION 
		mm	INCH																		
	4 PLACES	± .10	± .004																		
	3 PLACES	± .15	± .005																		
2 PLACES	± 0.38	± .015																			
1 PLACE	± .76	± .030																			
DRAWN BY RHOLTS	DATE 2004/06/04	CHECKED BY LSCHMIDT	DATE 2004/06/04	<b>LOW PROFILE GANGED, RIGHT ANGLE MODULAR JACK ASSEMBLY, LEAD-FREE</b> <b>MOLEX INCORPORATED</b>																	
APPROVED BY FSMITH	DATE 2004/06/04	MATERIAL NO. <b>SEE SHTS 3&amp;4</b>	DOCUMENT NO. <b>SD-43223-001</b>																		
DRAFT WHERE APPLICABLE MUST REMAIN WITHIN DIMENSIONS						SHEET NO. <b>1 OF 5</b>															
THIS DRAWING CONTAINS INFORMATION THAT IS PROPRIETARY TO MOLEX INCORPORATED AND SHOULD NOT BE USED WITHOUT WRITTEN PERMISSION																					



SUGGESTED PANEL OPENING  
 .015 TO TOP OF PCB  
 .038 TO BOTTOM OF OPENING

SCALE : 2/1

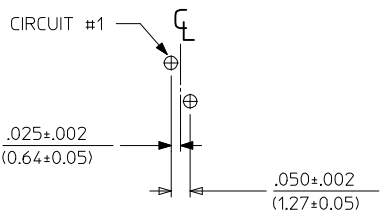


4 PORT 8 LOADED 8 JACK  
 (W/ SNAP-FIT PEGS SHOWN)

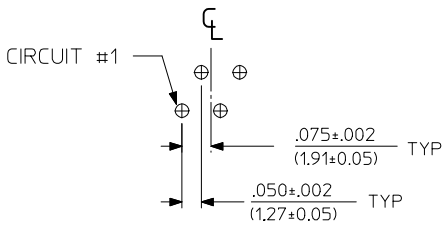
- NOTES:
- 1) MATERIAL:  
 HOUSING: GLASS FILLED NYLON, UL94V-0, COLOR: BLACK  
 INSULATOR: GLASS FILLED NYLON, UL94V-0, COLOR: BLACK  
 TERMINALS: PHOSPHOR BRONZE: .012/(0.30) THICK  
 SHIELD: BRASS, FRONT .007/(0.18) THICK, REAR .010/(0.25) THICK
  - 2) FINISH:  
 TERMINALS:  
 SELECT GOLD IN CONTACT AREA: 50 MICROINCHES (1.27 MICROMETERS) MIN.,  
 SELECT TIN IN PC TAIL AREA: 100 MICROINCHES (2.54 MICROMETERS) MIN.,  
 WITH OVERALL NICKEL UNDERPLATE: 50 MICROINCHES (1.27 MICROMETERS) MIN.  
 SHIELD:  
 100 MICROINCHES (2.54 MICROMETERS) NICKEL OVER 50 MICROINCHES  
 (1.27 MICROMETERS) COPPER UNDERPLATE; PCB GROUND TABS DIPPED IN TIN
  - 3) PRODUCT SPECIFICATION AND PROCESSING PARAMETERS: PS-43223-001.
  - 4) PACKAGING SPECIFICATION:  
 SHIELDED CONNECTOR ASSEMBLIES PACKAGED IN TRAYS PER MOLEX  
 PACKAGING SPECIFICATION PK-44150-004.
  - 5) SEE SHEETS 3-5 FOR P.C. BOARD LAYOUTS.
  - 6) REAR SHIELD IS AVAILABLE WITH (1) CENTERED GROUND TAB ON 4 & 8 PORT VERSIONS.
  - 7) 8 CIRCUIT JACKS CENTERLINE TO CENTERLINE SPACING IS .550/(13.97).
  - 8) ALL UNTOLERANCED DIMENSIONS ARE SHOWN FOR REFERENCE ONLY.
  - 9) THE PRIMARY SHIPPING CARTON WILL BE LABELED "COMPLIANT TO RoHS  
 DIRECTIVE 2002/95/EC AND ELV ANNEX II OF DIRECTIVE 2000/53/EC".  
 ASSEMBLIES WILL BE COMPLIANT TO THE RoHS AND ELV (LEAD-FREE) DIRECTIVES.
  - 10) THIS PART CONFORMS TO CLASS B REQUIREMENTS OF COSMETIC SPECIFICATION  
 PS-45499-002.

HOUSING SIZE	CIRCUIT SIZE	NO. OF PORTS	DIM. A	DIM. C	DIM. D	DIM. E
8	8	2	1.224 (31.09)	.350 (8.89)	1.000 (25.40)	1.255 (31.88)
8	8	4	2.324 (59.03)	.350 (8.89)	2.100 (53.34)	2.355 (59.82)
8	8	6	3.424 (86.97)	.350 (8.89)	3.200 (81.28)	3.455 (87.76)
8	8	8	4.524 (114.91)	.350 (8.89)	4.300 (109.22)	4.555 (115.97)
8	2	8	4.524 (114.91)	.050 (1.27)	4.300 (109.22)	4.555 (115.97)

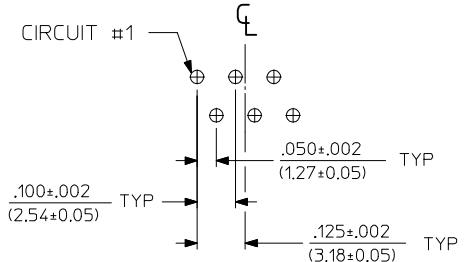
SEE SHEET 1 EC NO: UCP2017-0615 DRW:WAFENG02 CHKD: APPR:KLANG 2016/09/19 2016/09/28	QUALITY SYMBOLS ▽=0 ▽=0	GENERAL TOLERANCES (UNLESS SPECIFIED)		DIMENSION STYLE IN/MM		SCALE 4:1	DESIGN UNITS INCH	THIRD ANGLE PROJECTION	
				DRAWN BY RHOLTS		DATE 2004/06/04	TITLE <b>LOW PROFILE GANGED, RIGHT ANGLE MODULAR JACK ASSEMBLY, LEAD-FREE</b> <b>MOLEX INCORPORATED</b>		
				CHECKED BY LSCHMIDT		DATE 2004/06/04			
				APPROVED BY FSMITH		DATE 2004/06/04	MATERIAL NO. <b>SEE SHEET 5</b> DOCUMENT NO. <b>SD-43223-001</b>		
DRAFT WHERE APPLICABLE MUST REMAIN WITHIN DIMENSIONS		SIZE C		SHEET NO. <b>2 OF 5</b> THIS DRAWING CONTAINS INFORMATION THAT IS PROPRIETARY TO MOLEX INCORPORATED AND SHOULD NOT BE USED WITHOUT WRITTEN PERMISSION					



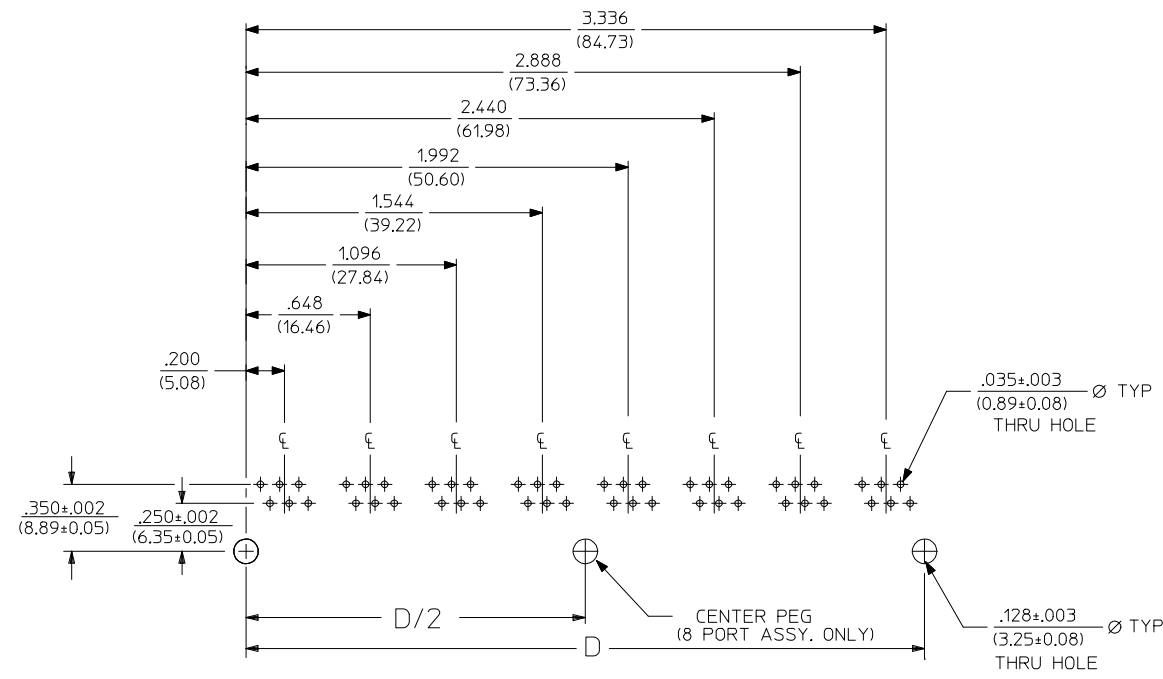
6 LOADED 2 DETAIL  
SCALE: 4/1



6 LOADED 4 DETAIL  
SCALE: 4/1



6 LOADED 6 DETAIL  
SCALE: 4/1



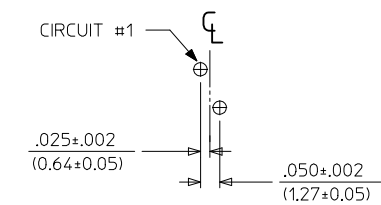
SUGGESTED P.C. BOARD LAYOUT  
COMPONENT SIDE OF BOARD  
8 PORT, 6 LOADED 6, LAYOUT SHOWN  
(SNAP-FIT VERSIONS)

FLANGELESS SNAP-FIT PEGS (UNSHIELDED)

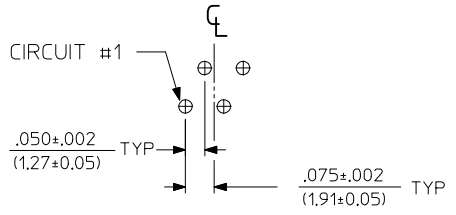
TX=NOT TOOLED	ASSEMBLY NUMBER	CONNECTOR SIZE	NUMBER OF CIRCUITS	NUMBER OF PORTS	DIMENSION "D"	PACKAGING STYLE	PACKAGING SPECIFICATION
X	43223-6613	6	6	6	2.640/(67.06)	TRAY	PK-43249-004
X	43223-6619	6	6	8	3.536/(89.81)	TRAY	PK-43249-004
X	43223-6655	6	2	6	2.640/(67.06)	TRAY	PK-43249-004

NOTES:  
1. RECOMMENDED PCB THICKNESS: .062±.005/(1.57±0.13)

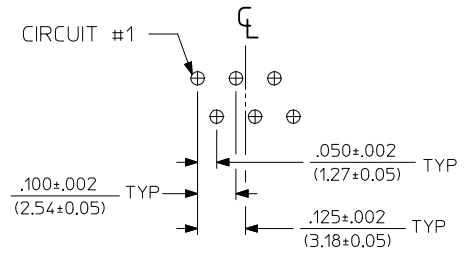
SEE SHEET 1 EC NO: UCP2017-0615 DRWNAFENG02 2016/09/19 CHKD: APPR:KLANG 2016/09/28 A10	QUALITY SYMBOLS ▽=0 ▽=0	GENERAL TOLERANCES (UNLESS SPECIFIED) <table border="1"> <tr> <th></th> <th>mm</th> <th>INCH</th> </tr> <tr> <td>4 PLACES ±</td> <td>---</td> <td>±---</td> </tr> <tr> <td>3 PLACES ±</td> <td>---</td> <td>±.015</td> </tr> <tr> <td>2 PLACES ±</td> <td>0.38</td> <td>±---</td> </tr> <tr> <td>1 PLACE ±</td> <td>---</td> <td>±---</td> </tr> </table>		mm	INCH	4 PLACES ±	---	±---	3 PLACES ±	---	±.015	2 PLACES ±	0.38	±---	1 PLACE ±	---	±---	DIMENSION STYLE IN/MM DRAWN BY: RHOLTS DATE: 2004/06/04 CHECKED BY: LSCHMIDT DATE: 2004/06/04 APPROVED BY: FSMITH DATE: 2004/06/04	SCALE: 2:1 DESIGN UNITS: INCH THIRD ANGLE PROJECTION	LOW PROFILE GANGED, RIGHT ANGLE MODULAR JACK ASSEMBLY, LEAD-FREE <b>MOLEX INCORPORATED</b> MATERIAL NO. SD-43223-001 DOCUMENT NO. SHEET NO. 3 OF 5
		mm	INCH																	
	4 PLACES ±	---	±---																	
	3 PLACES ±	---	±.015																	
2 PLACES ±	0.38	±---																		
1 PLACE ±	---	±---																		
DRAFT WHERE APPLICABLE MUST REMAIN WITHIN DIMENSIONS		SEE CHART	THIS DRAWING CONTAINS INFORMATION THAT IS PROPRIETARY TO MOLEX INCORPORATED AND SHOULD NOT BE USED WITHOUT WRITTEN PERMISSION																	



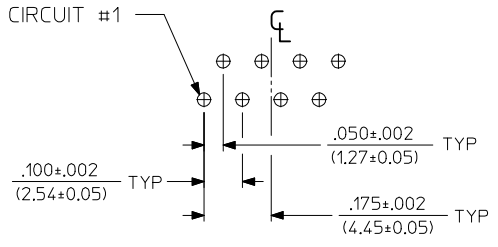
8 LOADED 2 DETAIL  
SCALE: 4/1



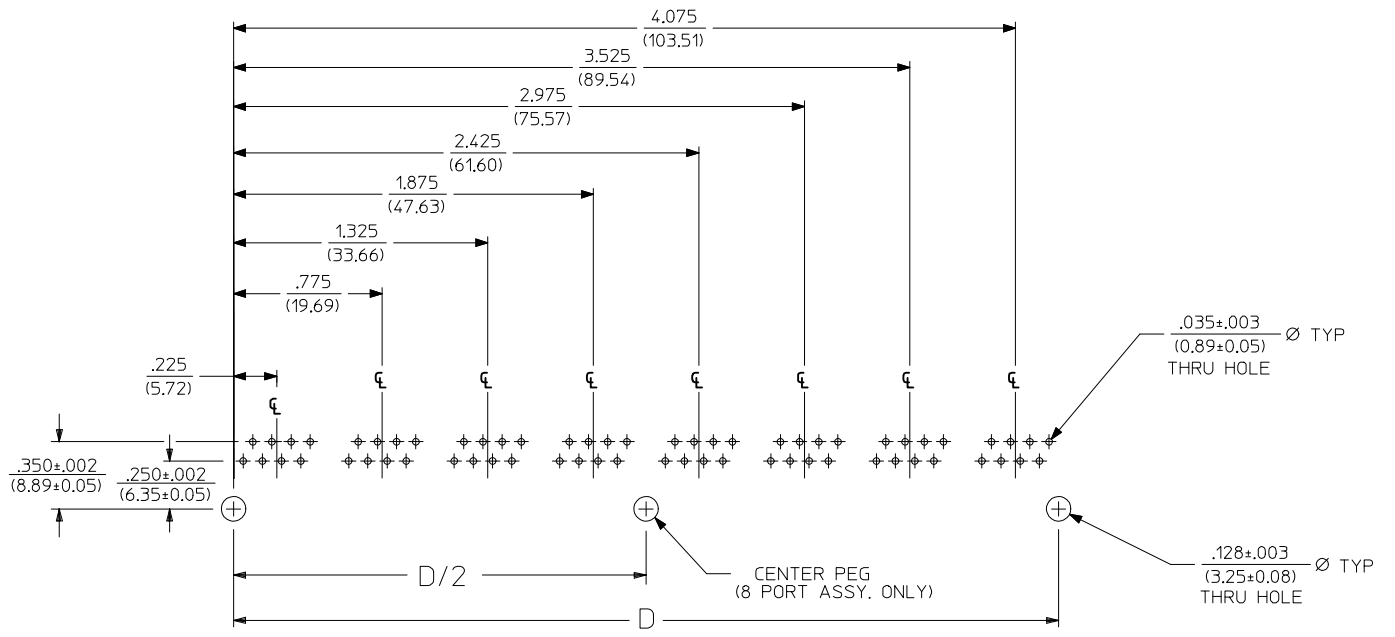
8 LOADED 4 DETAIL  
SCALE: 4/1



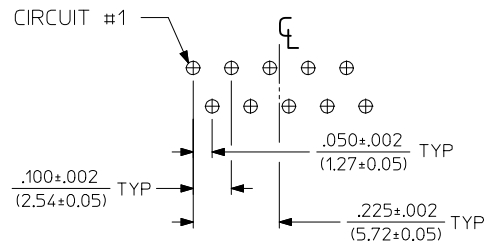
8 LOADED 6 DETAIL  
SCALE: 4/1



8 LOADED 8 DETAIL  
SCALE: 4/1



SUGGESTED P.C. BOARD LAYOUT  
COMPONENT SIDE OF BOARD  
8 PORT, 8 LOADED 8  
(UNSHIELDED) LAYOUT SHOWN  
(SNAP-FIT VERSIONS)



8 LOADED 10 DETAIL  
SCALE: 4/1

FLANGELESS SNAP-FIT PEGS (UNSHIELDED)

X=NOT TOOLED	ASSEMBLY NUMBER	CONNECTOR SIZE	NUMBER OF CIRCUITS	NUMBER OF PORTS	DIMENSION "D"	PACKAGING STYLE	PACKAGING SPECIFICATION
X	43223-8576	8	8	8	4.300/(109.32)	TRAY	PK-43249-004

NOTES:  
1. RECOMMENDED PCB THICKNESS: .062±.005/(1.57±0.13)

SEE SHEET 1	QUALITY SYMBOLS
EC NO: UCP2017-0615	▽=0
DRW:AFENG02 2016/09/19	▽=0
CHKD:	
APPR:KLANG 2016/09/28	
REV	DESCRIPTION
A10	

GENERAL TOLERANCES (UNLESS SPECIFIED)

	mm	INCH
4 PLACES ±	---	±---
3 PLACES ±	---	±.015
2 PLACES ±	0.38	±---
1 PLACE ±	---	±---

ANGULAR ±1/2°

DRAFT WHERE APPLICABLE MUST REMAIN WITHIN DIMENSIONS

DIMENSION STYLE IN/MM

SCALE 2:1

DESIGN UNITS INCH

THIRD ANGLE PROJECTION

DRAWN BY RHOLTS DATE 2004/06/04

CHECKED BY LSCHMIDT DATE 2004/06/04

APPROVED BY FSMITH DATE 2004/06/04

MATERIAL NO. SEE CHART

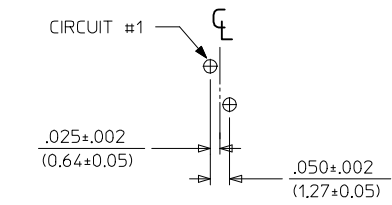
DOCUMENT NO. SD-43223-001

SHEET NO. 4 OF 5

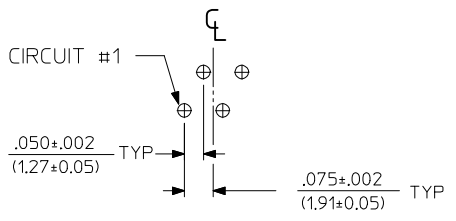
THIS DRAWING CONTAINS INFORMATION THAT IS PROPRIETARY TO MOLEX INCORPORATED AND SHOULD NOT BE USED WITHOUT WRITTEN PERMISSION

LOW PROFILE GANGED, RIGHT ANGLE MODULAR JACK ASSEMBLY, LEAD-FREE

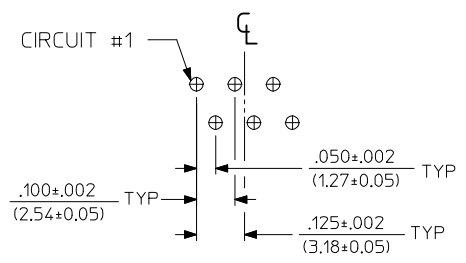
MOLEX MOLEX INCORPORATED



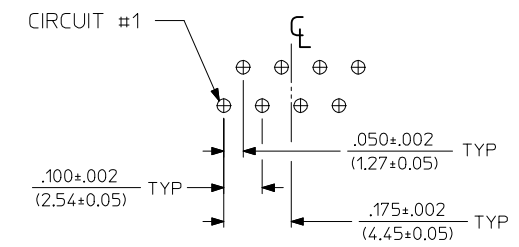
8 LOADED 2 DETAIL  
SCALE: 4/1



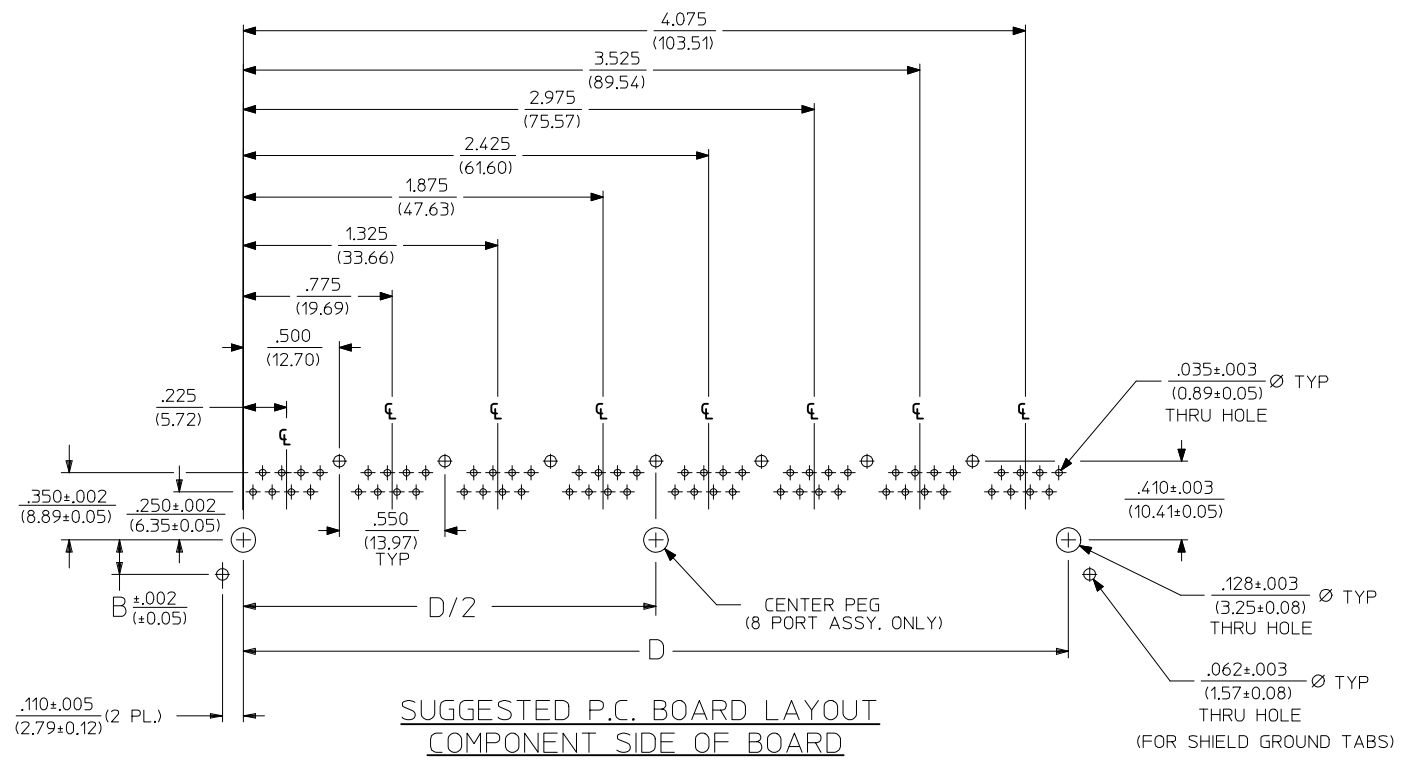
8 LOADED 4 DETAIL  
SCALE: 4/1



8 LOADED 6 DETAIL  
SCALE: 4/1



8 LOADED 8 DETAIL  
SCALE: 4/1



SUGGESTED P.C. BOARD LAYOUT  
COMPONENT SIDE OF BOARD  
8 PORT, 8 LOADED 8  
(SHIELDED) LAYOUT SHOWN  
(SNAP-FIT VERSIONS)

FLANGELESS SNAP-FIT PEGS (SHIELDED)

X=NOT TOOLED	ASSEMBLY NUMBER	CONNECTOR SIZE	NUMBER OF CIRCUITS	NUMBER OF PORTS	DIMENSION "B"	DIMENSION "D"	PACKAGING STYLE	PACKAGING SPECIFICATION
X	43223-8528	8	8	2	.180/(4.57)	1.000/(25.40)	TRAY	PK-44150-004
	43223-8546	8	8	4	.180/(4.57)	2.100/(53.34)	TRAY	PK-44150-004
X	43223-8564	8	8	6	.180/(4.57)	3.200/(81.28)	TRAY	PK-44150-004
	43223-8582	8	8	8	.180/(4.57)	4.300/(109.32)	TRAY	PK-44150-004

NOTES:  
1. RECOMMENDED PCB THICKNESS: .062±.005/(1.57±0.13)

SEE SHEET 1 EC NO: UCP2017-0615 DRWNAFENG02 2016/09/19 CHKD: APPR:KLANG 2016/09/28 A10	QUALITY SYMBOLS ▼=0 ▽=0	GENERAL TOLERANCES (UNLESS SPECIFIED) <table border="1"> <tr> <th></th> <th>mm</th> <th>INCH</th> </tr> <tr> <td>4 PLACES ±</td> <td>---</td> <td>±---</td> </tr> <tr> <td>3 PLACES ±</td> <td>---</td> <td>±.015</td> </tr> <tr> <td>2 PLACES ±</td> <td>0.38</td> <td>±---</td> </tr> <tr> <td>1 PLACE ±</td> <td>---</td> <td>±---</td> </tr> </table>		mm	INCH	4 PLACES ±	---	±---	3 PLACES ±	---	±.015	2 PLACES ±	0.38	±---	1 PLACE ±	---	±---	DIMENSION STYLE <b>IN/MM</b>	SCALE <b>2:1</b>	DESIGN UNITS <b>INCH</b>	THIRD ANGLE PROJECTION
		mm	INCH																		
	4 PLACES ±	---	±---																		
	3 PLACES ±	---	±.015																		
2 PLACES ±	0.38	±---																			
1 PLACE ±	---	±---																			
DRAWN BY RHOLTS 2004/06/04	CHECKED BY LSCHMIDT 2004/06/04	APPROVED BY FSMITH 2004/06/04	<b>LOW PROFILE GANGED, RIGHT ANGLE MODULAR JACK ASSEMBLY, LEAD-FREE</b>																		
DRAFT WHERE APPLICABLE MUST REMAIN WITHIN DIMENSIONS			MATERIAL NO. <b>SEE CHART</b>	DOCUMENT NO. <b>SD-43223-001</b>	SHEET NO. <b>5 OF 5</b>	<b>MOLEX INCORPORATED</b>															
THIS DRAWING CONTAINS INFORMATION THAT IS PROPRIETARY TO MOLEX INCORPORATED AND SHOULD NOT BE USED WITHOUT WRITTEN PERMISSION																					