



Chipsmall Limited consists of a professional team with an average of over 10 year of expertise in the distribution of electronic components. Based in Hongkong, we have already established firm and mutual-benefit business relationships with customers from,Europe,America and south Asia,supplying obsolete and hard-to-find components to meet their specific needs.

With the principle of “Quality Parts,Customers Priority,Honest Operation,and Considerate Service”,our business mainly focus on the distribution of electronic components. Line cards we deal with include Microchip,ALPS,ROHM,Xilinx,Pulse,ON,Everlight and Freescale. Main products comprise IC,Modules,Potentiometer,IC Socket,Relay,Connector.Our parts cover such applications as commercial,industrial, and automotives areas.

We are looking forward to setting up business relationship with you and hope to provide you with the best service and solution. Let us make a better world for our industry!



## Contact us

Tel: +86-755-8981 8866 Fax: +86-755-8427 6832

Email & Skype: info@chipsmall.com Web: www.chipsmall.com

Address: A1208, Overseas Decoration Building, #122 Zhenhua RD., Futian, Shenzhen, China

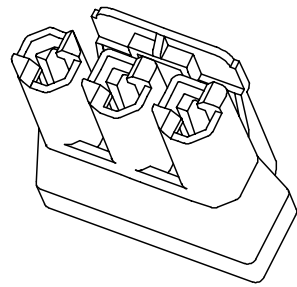
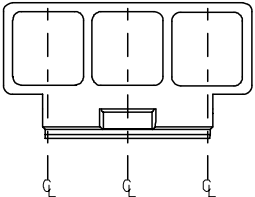


13 12 11 10 9 8 7 6 5 4 3 2 1

J  
I  
H  
G  
F  
E  
D  
C  
B  
A

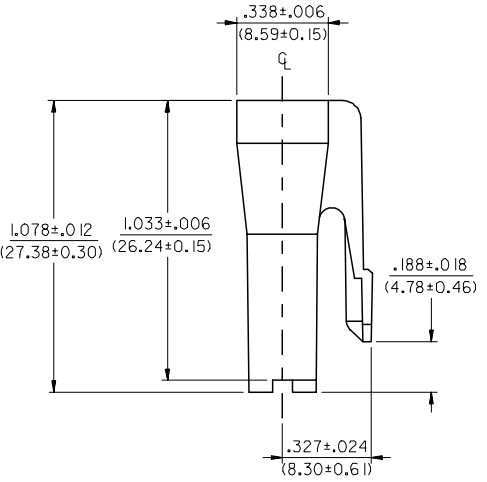
J  
I  
H  
G  
F  
E  
D  
C  
B  
A

.590±.006  
(14.99±0.15)

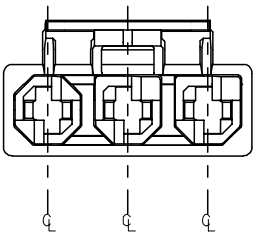
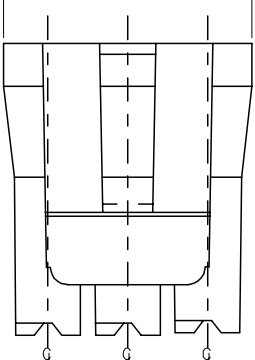


43335-5023  
(POSITIONED TO SHOW THE MATING END)

.338±.006  
(8.59±0.15)



.918±.010  
(23.32±0.25)



NOTES:

1. MATERIAL: 6/6 NYLON, UL 94V-2, COLOR: BLACK.
2. FINISH: NONE
3. SEE PSX-43335-9999 FOR APPLICABLE SPECIFICATIONS.
4. THIS CONNECTOR HOUSING FOR USE WITH 43375-\*\*\*\* TERMINALS.
5. SEE SDES-43335-9002 FOR REQUIREMENTS FOR MATING INTERFACE.

ME10 & CHANGED DIM. EC NO: UCP2005-1536 DRW:ADRA1NOL 2005/01/31 CHK:DWIRKUS 2005/01/31 APPR:BMIRKUS 2005/02/01 A2	QUALITY SYMBOLS	GENERAL TOLERANCES (UNLESS SPECIFIED)		DIMENSION STYLE IN/MM		SCALE 3:1	DESIGN UNITS INCH	THIRD ANGLE PROJECTION
		mm	INCH	DRAWN BY KBP	DATE 12/16/97	TITLE 3 CKT RECEPTACLE HOUSING .125X.020		
		4 PLACES ± --- ± ---	3 PLACES ± --- ± ---	CHECKED BY KBP	DATE 12/16/97	FLAT BLADE SYSTEM W/TPA		
		2 PLACES ± --- ± ---	1 PLACE ± --- ± ---	APPROVED BY JC	DATE 12/16/97	MOLEX INCORPORATED		
		ANGULAR ±1/2°	MATERIAL NO. 43335-5023		DOCUMENT NO. SD-43335-5023		SHEET NO. 1 OF 1	
	DRAFT WHERE APPLICABLE MUST REMAIN WITHIN DIMENSIONS		THIS DRAWING CONTAINS INFORMATION THAT IS PROPRIETARY TO MOLEX INCORPORATED AND SHOULD NOT BE USED WITHOUT WRITTEN PERMISSION					

12 11 10 9 8 7 6 5 4 3 2 1