



Chipsmall Limited consists of a professional team with an average of over 10 year of expertise in the distribution of electronic components. Based in Hongkong, we have already established firm and mutual-benefit business relationships with customers from,Europe,America and south Asia,supplying obsolete and hard-to-find components to meet their specific needs.

With the principle of “Quality Parts,Customers Priority,Honest Operation,and Considerate Service”,our business mainly focus on the distribution of electronic components. Line cards we deal with include Microchip,ALPS,ROHM,Xilinx,Pulse,ON,Everlight and Freescale. Main products comprise IC,Modules,Potentiometer,IC Socket,Relay,Connector.Our parts cover such applications as commercial,industrial, and automotives areas.

We are looking forward to setting up business relationship with you and hope to provide you with the best service and solution. Let us make a better world for our industry!



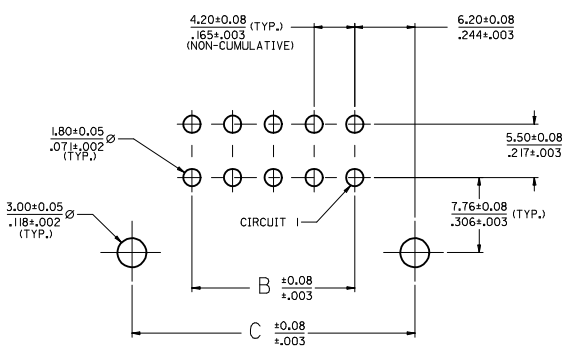
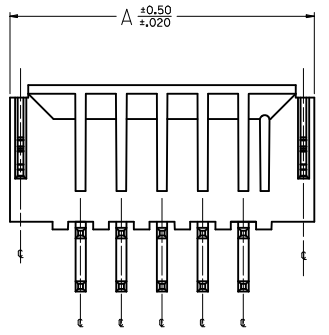
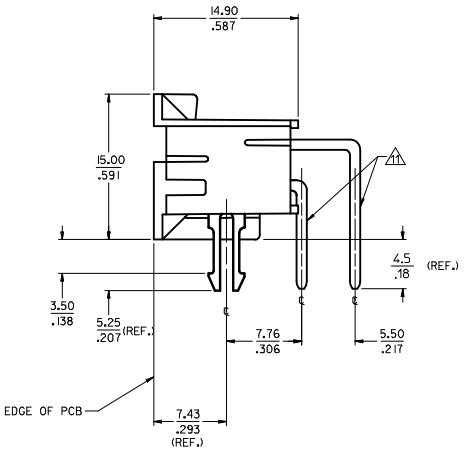
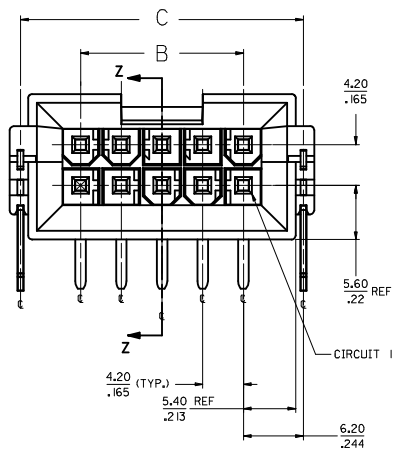
Contact us

Tel: +86-755-8981 8866 Fax: +86-755-8427 6832

Email & Skype: info@chipsmall.com Web: www.chipsmall.com

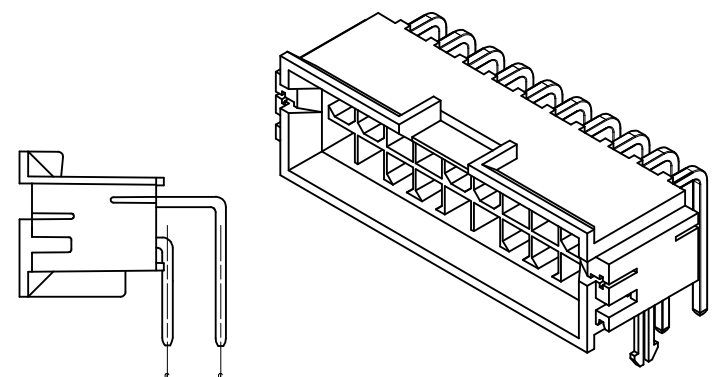
Address: A1208, Overseas Decoration Building, #122 Zhenhua RD., Futian, Shenzhen, China





PCB LAYOUT: COMPONENT SIDE
 RECOMMENDED PCB THICKNESS: 3.175±0.18 ±.125±.007

- NOTES**
- MATERIALS**
 HOUSING: NYLON 4/6 UL 94V-0 GLASS FILLED, COLOR: BLACK
 TERMINAL: BRASS
 BOARD RETENTION CLIP: BRASS
 - FINISHES:**
 TERMINAL:
 1-(0.00254)/.000100 MIN. BRIGHT TIN OVER
 (0.00127)/.000050 MIN. NICKEL
 2-(0.00076)/.000030 MIN. SELECT GOLD AND
 (0.00254)/.000100 MIN. SELECT MATTE TIN
 OVER (0.00127)/.000050 MIN. NICKEL OVERALL
 MOUNTING CLIP:
 (0.00254)/.000100 MIN. MATTE TIN OVER
 (0.00127)/.000050 MIN. NICKEL
 - PRODUCT SPECIFICATION:** PS-43810-001
 - PACKAGING SPECIFICATION:** PK-43810-001
 - PARTS MATES WITH MOLEX RECP TACKLE #5557 AND #42474 AND #42385 HEADER**
 - PART ALLOWS FOR (1.27)/.050 MAX MIS-ALIGNMENT WITH MATING HOUSINGS IN ANY DIRECTION**
 - CONNECTOR ASSEMBLIES ARE NOT TO BE MATED AND UNMATED WHILE CIRCUITS ARE LIVE**
 - PARTS ARE NOT DESIGNED FOR CURRENT SHARING**
 - DISCOLORATION IN THE BANDOLIER CARRIER AREA OF THE PIN IS INHERENT TO THE PLATING PROCESS AND IS DUE TO THE MASKING EFFECT OF THE CARRIER. THIS DISCOLORATION IS IN A NON-FUNCTIONAL AREA OF THE PIN AND WILL NOT AFFECT THE PERFORMANCE OF THE HEADER ASSEMBLY.**
 - PART CONFORMS TO CLASS 'B' REQUIREMENTS OF COSMETIC SPECIFICATION PS-45499-002**
- △ FORMING MARKS ARE ACCEPTABLE



HEADER ASSEMBLY WITH NO CLIP OPTION

20 CKT SHOWN

CORRECT TAIL LENGTH EC NO: UCP2016-0596 DRAWN: MONTI 2015/08/07 CHKD: BELL 2015/08/07 APPROVED: TH 2015/09/23 REV DESCRIPTION	QUALITY SYMBOLS ∇=0 ∇=0 ∇=0		GENERAL TOLERANCES (UNLESS SPECIFIED) DIM INCH 4 PLACES ±.--- ±.--- 3 PLACES ±.--- ±.010 2 PLACES ±0.25 ±.014 1 PLACE ±0.35 ±.--- ANGULAR ±1/2°		DIMENSION STYLE MM/IN		SCALE 4:1 DESIGN UNITS METRIC		THIRD ANGLE PROJECTION	
	DRAWN BY MANLPAZ DATE 01-06-97 CHECKED BY BANDURA DATE 03-26-97 APPROVED BY FSWITH DATE 2012/01/19		MATERIAL NO. SEE CHART DOCUMENT NO. SD-43810-051		TITLE MINI-FIT JR BMI RIGHT ANGLE HEADER ASM FOR 3.175/.125 THK. PCB		MOLEX INCORPORATED		SHEET NO. 1 OF 2	
	DRAFT WHERE APPLICABLE MUST REMAIN WITHIN DIMENSIONS		THIS DRAWING CONTAINS INFORMATION THAT IS PROPRIETARY TO MOLEX INCORPORATED AND SHOULD NOT BE USED WITHOUT WRITTEN PERMISSION							

	20	19	18	17	16	15	14	13	12	11	10	9	8	7	6	5	4	3	2	1
	MATERIAL NO.	CIRCUIT SIZE	CLIP OPTION	DIM. 'A'	DIM. 'B'	DIM. 'C'	FINISH	MATERIAL NO.	CIRCUIT SIZE	CLIP OPTION	DIM. 'A'	DIM. 'B'	DIM. 'C'	FINISH						
M	43810-0089	4	YES	18.81 .740	4.20 .165	16.60 .653	1	43810-0331	4	NO	18.81 .740	4.20 .165	16.60 .653	1						
	43810-0090	6	YES	23.01 .906	8.40 .331	20.80 .819	1	43810-0332	6	NO	23.01 .906	8.40 .331	20.80 .819	1						
N	43810-0091	8	YES	27.21 1.071	12.60 .496	25.00 .984	1	43810-0333	8	NO	27.21 1.071	12.60 .496	25.00 .984	1						
L	43810-0092	10	YES	31.41 1.237	16.80 .661	29.20 1.150	1	43810-0334	10	NO	31.41 1.237	16.80 .661	29.20 1.150	1						
N	43810-0093	12	YES	35.61 1.402	21.00 .828	33.40 1.315	1	43810-0335	12	NO	35.61 1.402	21.00 .828	33.40 1.315	1						
	43810-0094	14	YES	39.81 1.567	25.20 .992	37.60 1.480	1	43810-0336	14	NO	39.81 1.567	25.20 .992	37.60 1.480	1						
K	43810-0095	16	YES	44.01 1.733	29.40 1.157	41.80 1.646	1	43810-0337	16	NO	44.01 1.733	29.40 1.157	41.80 1.646	1						
	43810-0096	18	YES	48.21 1.898	33.60 1.323	46.00 1.811	1	43810-0338	18	NO	48.21 1.898	33.60 1.323	46.00 1.811	1						
N	43810-0097	20	YES	52.41 2.063	37.80 1.488	50.20 1.976	1	43810-0339	20	NO	52.41 2.063	37.80 1.488	50.20 1.976	1						
J	43810-0098	22	YES	56.61 2.229	42.00 1.654	54.40 2.142	1	43810-0340	22	NO	56.61 2.229	42.00 1.654	54.40 2.142	1						
	43810-0099	24	YES	60.81 2.394	46.20 1.819	58.60 2.307	1	43810-0341	24	NO	60.81 2.394	46.20 1.819	58.60 2.307	1						
I	43810-0100	4	YES	18.81 .740	4.20 .165	16.60 .653	2	43810-0342	4	NO	18.81 .740	4.20 .165	16.60 .653	2						
	43810-0101	6	YES	23.01 .906	8.40 .331	20.80 .819	2	43810-0343	6	NO	23.01 .906	8.40 .331	20.80 .819	2						
N	43810-0102	8	YES	27.21 1.071	12.60 .496	25.00 .984	2	43810-0344	8	NO	27.21 1.071	12.60 .496	25.00 .984	2						
	43810-0103	10	YES	31.41 1.237	16.80 .661	29.20 1.150	2	43810-0345	10	NO	31.41 1.237	16.80 .661	29.20 1.150	2						
H	43810-0104	12	YES	35.61 1.402	21.00 .828	33.40 1.315	2	43810-0346	12	NO	35.61 1.402	21.00 .828	33.40 1.315	2						
	43810-0105	14	YES	39.81 1.567	25.20 .992	37.60 1.480	2	43810-0347	14	NO	39.81 1.567	25.20 .992	37.60 1.480	2						
N	43810-0106	16	YES	44.01 1.733	29.40 1.157	41.80 1.646	2	43810-0348	16	NO	44.01 1.733	29.40 1.157	41.80 1.646	2						
G	43810-0107	18	YES	48.21 1.898	33.60 1.323	46.00 1.811	2	43810-0349	18	NO	48.21 1.898	33.60 1.323	46.00 1.811	2						
N	43810-0108	20	YES	52.41 2.063	37.80 1.488	50.20 1.976	2	43810-0350	20	NO	52.41 2.063	37.80 1.488	50.20 1.976	2						
	43810-0109	22	YES	56.61 2.229	42.00 1.654	54.40 2.142	2	43810-0351	22	NO	56.61 2.229	42.00 1.654	54.40 2.142	2						
F	43810-0110	24	YES	60.81 2.394	46.20 1.819	58.60 2.307	2	43810-0352	24	NO	60.81 2.394	46.20 1.819	58.60 2.307	2						

N- NOT TOOLED

N- NOT TOOLED

SEE SHEET 1 IEC NO. UCP2016-0596 DRAWN: MONTI 2015/08/07 CHKD: BEL 2015/08/07 APPR: FSM TH 2015/09/23	QUALITY SYMBOLS ∇=0 ∇=0 ∇=0	GENERAL TOLERANCES (UNLESS SPECIFIED)		DIMENSION STYLE MM/IN	SCALE 1:1	DESIGN UNITS METRIC	THIRD ANGLE PROJECTION		
		4 PLACES ±.010 3 PLACES ±.014 2 PLACES ±.025 1 PLACE ±.035		mm INCH	DRAWN BY MANLPAZ	DATE 01-06-97	TITLE MINI-FIT JR BMI RIGHT ANGLE HEADER ASM FOR 3.175/.125 THK. PCB		
		ANGULAR ±1/2°		DRAFT WHERE APPLICABLE MUST REMAIN WITHIN DIMENSIONS	APPROVED BY FSMITH	DATE 2012/01/19	MATERIAL NO. SEE CHART	DOCUMENT NO. SD-43810-051	SHEET NO. 2 OF 2
		THIS DRAWING CONTAINS INFORMATION THAT IS PROPRIETARY TO MOLEX INCORPORATED AND SHOULD NOT BE USED WITHOUT WRITTEN PERMISSION							