



Chipsmall Limited consists of a professional team with an average of over 10 year of expertise in the distribution of electronic components. Based in Hongkong, we have already established firm and mutual-benefit business relationships with customers from,Europe,America and south Asia,supplying obsolete and hard-to-find components to meet their specific needs.

With the principle of “Quality Parts,Customers Priority,Honest Operation,and Considerate Service”,our business mainly focus on the distribution of electronic components. Line cards we deal with include Microchip,ALPS,ROHM,Xilinx,Pulse,ON,Everlight and Freescale. Main products comprise IC,Modules,Potentiometer,IC Socket,Relay,Connector.Our parts cover such applications as commercial,industrial, and automotives areas.

We are looking forward to setting up business relationship with you and hope to provide you with the best service and solution. Let us make a better world for our industry!



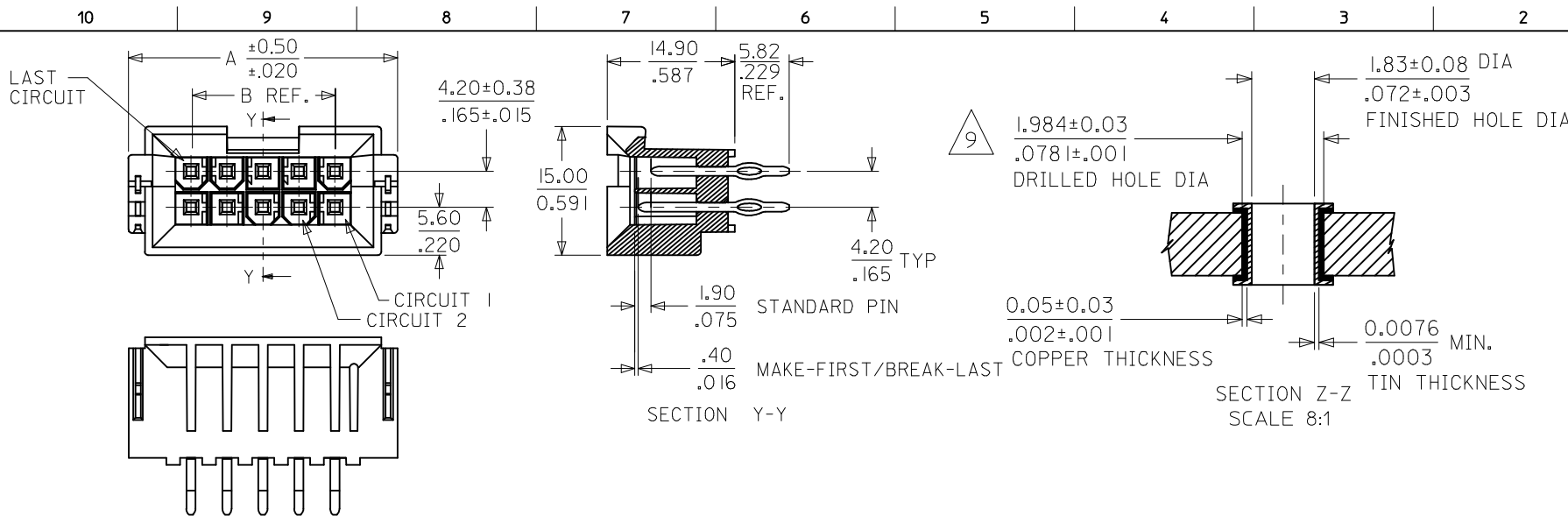
Contact us

Tel: +86-755-8981 8866 Fax: +86-755-8427 6832

Email & Skype: info@chipsmall.com Web: www.chipsmall.com

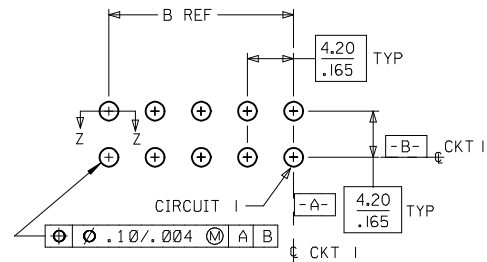
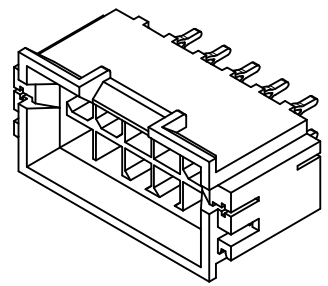
Address: A1208, Overseas Decoration Building, #122 Zhenhua RD., Futian, Shenzhen, China





CKT	A	B
4	18.80 .740	4.20 .165
6	23.00 .906	8.40 .331
8	27.20 1.071	12.60 .496
10	31.40 1.237	16.80 .661
12	35.60 1.402	21.00 .827
14	39.80 1.567	25.20 .992
16	44.00 1.733	29.40 1.157
18	48.20 1.898	33.60 1.323
20	52.40 2.063	37.80 1.488
22	56.60 2.229	42.00 1.654
24	60.80 2.394	46.20 1.819

- NOTES:
- MATERIAL: HOUSING: GLASS FILLED NYLON, UL94 V-0, BLACK
TERMINAL: PHOSPHOR BRONZE
BOARD RETENTION CLIP: BRASS
 - TERMINAL FINISH:
 - 1 = 0.00254/.000100 MIN. BRIGHT TIN OVER 0.00127/.000050 MIN. NICKEL OVERALL
 - 2 = 0.00076/.000030 MIN. GOLD IN CONTACT AREA, 0.00254/.000100 MIN. 90/10 MATTE TIN-LEAD IN TAIL AREA OVER 0.00127/.000050 MIN. NICKEL OVERALL
 - 4 = 0.00076/.000030 MIN. GOLD IN CONTACT AREA, 0.00254/.000100 MIN. MATTE TIN IN TAIL AREA OVER 0.00127/.000050 MIN. NICKEL OVERALL
 - 5 = 0.00254/.000100 MIN. MATTE TIN OVER 0.00127/.000050 MIN. NICKEL OVERALL
 - PRODUCT SPECIFICATION: PS-43879-001
 - PARTS ARE TRAY PACKED PER PK-43879-001
 - THIS PART MATES WITH RECEPTACLE NUMBERS 5557, 42474, 44516 AND HEADER NUMBER 42385.
 - PART ALLOWS FOR 1.27/.050 MAX. MIS-ALIGNMENT WITH MATING HOUSING IN ANY DIRECTION.
 - CONNECTOR ASSEMBLIES ARE NOT DESIGNED TO BE MATED AND UNMATED WHILE CIRCUITS ARE LIVE.
 - PART IS NOT DESIGNED FOR CURRENT SHARING.
 - DRILLED HOLE DIAMETER IS EQUIVALENT TO 5/64 STANDARD DRILL BIT.
 - PART CONFORMS TO CLASS "B" REQUIREMENTS OF COSMETIC SPECIFICATION PS-45499-002.
 - THIS HEADER REQUIRES A MOLEX INSERTION TOOL (62200-9400) TO PROPERLY INSTALL IT TO THE PCB.



SCALE 3:1

3. PRODUCT SPECIFICATION: PS-43879-001
4. PARTS ARE TRAY PACKED PER PK-43879-001
5. THIS PART MATES WITH RECEPTACLE NUMBERS 5557, 42474, 44516 AND HEADER NUMBER 42385.
6. PART ALLOWS FOR 1.27/.050 MAX. MIS-ALIGNMENT WITH MATING HOUSING IN ANY DIRECTION.
7. CONNECTOR ASSEMBLIES ARE NOT DESIGNED TO BE MATED AND UNMATED WHILE CIRCUITS ARE LIVE.
8. PART IS NOT DESIGNED FOR CURRENT SHARING.
- DRILLED HOLE DIAMETER IS EQUIVALENT TO 5/64 STANDARD DRILL BIT.
- PART CONFORMS TO CLASS "B" REQUIREMENTS OF COSMETIC SPECIFICATION PS-45499-002.
- THIS HEADER REQUIRES A MOLEX INSERTION TOOL (62200-9400) TO PROPERLY INSTALL IT TO THE PCB.

ADD -6048 EC NO: UCP2013-0304 DRAWN: NGUYEN 2012/07/23 CHKD: JIBELL 2012/07/23 APPR: FSMITH 2012/07/25 G9	QUALITY SYMBOLS ▽F=0 ▽E=0 ▽D=0	GENERAL TOLERANCES (UNLESS SPECIFIED)		DIMENSION STYLE MM/IN		SCALE 2:1	DESIGN UNITS METRIC	THIRD ANGLE PROJECTION	
		4 PLACES ± --- ± ---	3 PLACES ± --- ± .010	2 PLACES ± 0.25 ± .014	1 PLACE ± 0.35 ± ---	DRAWN BY POLGAR	DATE 2002/12/10	TITLE VERT. HDR. ASSY, BMI/CPI MAKE-FIRST/BREAK-LAST MINI-FIT JR. SERIES	
ANGULAR ±1/2°		DRAFT WHERE APPLICABLE MUST REMAIN WITHIN DIMENSIONS		APPROVED BY FSMITH		DATE 2011/05/02	MATERIAL NO. SEE SHEET 2-4		
				MATERIAL NO. SEE SHEET 2-4		DATE 2011/05/02	DOCUMENT NO. SD-43879-061		
				SIZE B		THIS DRAWING CONTAINS INFORMATION THAT IS PROPRIETARY TO MOLEX INCORPORATED AND SHOULD NOT BE USED WITHOUT WRITTEN PERMISSION			
						SHEET NO. 1 OF 4			

ITEM NO.	CKT. SIZE	TERMINAL VERSION REQUIRED AT EACH CIRCUIT LOCATION: SEE LEGEND BELOW																							
		1	2	3	4	5	6	7	8	9	10	11	12	13	14	15	16	17	18	19	20	21	22	23	24
43879-6001	10	MI	MI	SI	MI	MI	MI	MI	MI	MI	MI	-	-	-	-	-	-	-	-	-	-	-	-	-	-
43879-6004	14	SI	SI	SI	SI	SI	SI	SI	MI	MI	MI	MI	MI	SI	-	-	-	-	-	-	-	-	-	-	-
43879-6005	18	SI	SI	SI	SI	SI	SI	SI	SI	SI	MI	MI	SI	SI	SI	SI	SI	SI	SI	-	-	-	-	-	-
43879-6006	14	SI	SI	MI	SI	MI	SI	MI	SI	SI	SI	SI	SI	SI	-	-	-	-	-	-	-	-	-	-	-
43879-6007	10	S2	S2	S2	S2	M2	S2	M2	S2	S2	M2	-	-	-	-	-	-	-	-	-	-	-	-	-	-
43879-6008	14	SI	SI	MI	MI	SI	MI	SI	SI	SI	MI	MI	SI	SI	SI	-	-	-	-	-	-	-	-	-	-
43879-6009	18	MI	MI	MI	MI	SI	MI	MI	MI	MI	MI	MI	MI	MI	MI	MI	MI	MI	MI	-	-	-	-	-	-
43879-6010	06	SI	MI	MI	SI	MI	MI	-	-	-	-	-	-	-	-	-	-	-	-	-	-	-	-	-	-
43879-6011	10	S2	S2	M2	S2	M2	S2	M2	S2	S2	M2	-	-	-	-	-	-	-	-	-	-	-	-	-	-
43879-6012	18	M4	M4	M4	M4	S4	M4	M4	M4	M4	M4	M4	M4	M4	M4	M4	M4	M4	M4	-	-	-	-	-	-
43879-6013	10	M4	S4	S4	S4	S4	M4	M4	S4	S4	M4	-	-	-	-	-	-	-	-	-	-	-	-	-	-
43879-6014	10	S4	S4	M4	S4	S4	M4	M4	M4	S4	S4	-	-	-	-	-	-	-	-	-	-	-	-	-	-
43879-6015	10	S4	S4	S4	S4	M4	S4	M4	S4	S4	M4	-	-	-	-	-	-	-	-	-	-	-	-	-	-

LEGEND

✱ ✱

M = MAKE-FIRST/BREAK-LAST
S = STANDARD LENGTH

- 1 = BRIGHT TIN OVER NICKEL
- 2 = GOLD & TIN-LEAD OVER NICKEL
- 4 = GOLD & TIN OVER NICKEL

SEE SHEET 1 EC NO: UCP2013-0304 DRAWN: NGUYEN 2012/07/23 CHKD: BELL 2012/07/23 APPR: FSMITH 2012/07/25 G9	QUALITY SYMBOLS	GENERAL TOLERANCES (UNLESS SPECIFIED)	DIMENSION STYLE	SCALE	DESIGN UNITS	THIRD ANGLE PROJECTION
	▽Z=0	mm INCH	MM/IN	1:1	METRIC	
	▽Z=0	4 PLACES ± --- ± ---	DRAWN BY DATE			VERT. HDR. ASSY, BMI/CPI MAKE-FIRST/BREAK-LAST MINI-FIT JR. SERIES
	▽Z=0	3 PLACES ± --- ± .010	POLGAR 2002/12/10			
	2 PLACES ± 0.25 ± .014	CHECKED BY DATE			MOLEX INCORPORATED	
	1 PLACE ± 0.35 ± ---	MARGULIS 2002/12/17				
	ANGULAR ±1/2°	APPROVED BY DATE			DOCUMENT NO.	SHEET NO.
		FSMITH 2011/05/02			SD-43879-061	2 OF 4
		DRAFT WHERE APPLICABLE MUST REMAIN WITHIN DIMENSIONS	SEE CHART	THIS DRAWING CONTAINS INFORMATION THAT IS PROPRIETARY TO MOLEX INCORPORATED AND SHOULD NOT BE USED WITHOUT WRITTEN PERMISSION		

ITEM NO.	CKT. SIZE	TERMINAL VERSION REQUIRED AT EACH CIRCUIT LOCATION: SEE LEGEND BELOW																							
		1	2	3	4	5	6	7	8	9	10	11	12	13	14	15	16	17	18	19	20	21	22	23	24
43879-6016	10	S4	S4	M4	S4	M4	S4	M4	S4	S4	M4	-	-	-	-	-	-	-	-	-	-	-	-	-	-
43879-6018	18	S2	M2	M2	M2	M2	M2	M2	M2	M2	M2	M2	M2	M2	M2	M2	M2	M2	M2	-	-	-	-	-	-
43879-6019	14	S2	S2	M2	M2	S2	M2	S2	S2	S2	M2	M2	S2	S2	S2	-	-	-	-	-	-	-	-	-	-
43879-6020	14	S4	S4	S4	M4	M4	M4	S4	S4	S4	S4	S4	S4	S4	S4	-	-	-	-	-	-	-	-	-	-
43879-6021	10	M2	M2	M2	M2	M2	M2	M2	M2	V	V	-	-	-	-	-	-	-	-	-	-	-	-	-	-
43879-6022	24	M4	M4	M4	S4	S4	S4	M4	S4	S4	S4	S4	S4	M4	M4	M4	S4	S4	S4	S4	S4	S4	S4	S4	S4
43879-6023	TBD																								
43879-6024	TBD																								
43879-6025	18	M4	S4	S4	S4	S4	S4	S4	S4	S4	S4	S4	S4	M4	M4	M4	S4	S4	M4	-	-	-	-	-	-
43879-6026	14	S1	S1	S1	M1	M1	S1	S1	S1	S1	S1	M1	M1	S1	S1	-	-	-	-	-	-	-	-	-	-
43879-6027	14	M1	M1	M1	M1	M1	M1	S1	M1	M1	M1	M1	M1	M1	S1	-	-	-	-	-	-	-	-	-	-
43879-6029	04	M1	M1	M1	M1	-	-	-	-	-	-	-	-	-	-	-	-	-	-	-	-	-	-	-	-
43879-6030	14	M5	M5	M5	M5	M5	M5	M5	M5	M5	M5	M5	M5	M5	M5	-	-	-	-	-	-	-	-	-	-

LEGEND

* *

M = MAKE-FIRST/BREAK-LAST
S = STANDARD LENGTH

- 1 = BRIGHT TIN OVER NICKEL
- 2 = GOLD & TIN-LEAD OVER NICKEL
- 4 = GOLD & TIN OVER NICKEL
- 5 = MATTE TIN OVER NICKEL

SEE SHEET 1 EC NO: UCP2013-0304 DRW: NGUYEN 2012/07/23 CHKD: J.BELL 2012/07/23 APPR: FSMITH 2012/07/25 G9	QUALITY SYMBOLS $\nabla F/0$ $\nabla F/0$ $\nabla F/0$	GENERAL TOLERANCES (UNLESS SPECIFIED) <table border="1"> <tr> <th></th> <th>mm</th> <th>INCH</th> </tr> <tr> <td>4 PLACES</td> <td>± ---</td> <td>± ---</td> </tr> <tr> <td>3 PLACES</td> <td>± ---</td> <td>± .010</td> </tr> <tr> <td>2 PLACES</td> <td>± 0.25</td> <td>± .014</td> </tr> <tr> <td>1 PLACE</td> <td>± 0.35</td> <td>± ---</td> </tr> </table>		mm	INCH	4 PLACES	± ---	± ---	3 PLACES	± ---	± .010	2 PLACES	± 0.25	± .014	1 PLACE	± 0.35	± ---	DIMENSION STYLE MM/IN DRAWN BY: POLGAR DATE: 2002/12/10 CHECKED BY: MARGULIS DATE: 2002/12/17 APPROVED BY: FSMITH DATE: 2011/05/02	SCALE: 1:1 DESIGN UNITS: METRIC THIRD ANGLE PROJECTION	TITLE: VERT. HDR. ASSY, BMI/CPI MAKE-FIRST/BREAK-LAST MINI-FIT JR. SERIES
		mm	INCH																	
	4 PLACES	± ---	± ---																	
	3 PLACES	± ---	± .010																	
2 PLACES	± 0.25	± .014																		
1 PLACE	± 0.35	± ---																		
		ANGULAR ±1/2° DRAFT WHERE APPLICABLE MUST REMAIN WITHIN DIMENSIONS	MATERIAL NO. SEE CHART	DOCUMENT NO. SD-43879-061	SHEET NO. 3 OF 4															
			THIS DRAWING CONTAINS INFORMATION THAT IS PROPRIETARY TO MOLEX INCORPORATED AND SHOULD NOT BE USED WITHOUT WRITTEN PERMISSION																	

ITEM NO.	CKT. SIZE	TERMINAL VERSION REQUIRED AT EACH CIRCUIT LOCATION: SEE LEGEND BELOW																							
		1	2	3	4	5	6	7	8	9	10	11	12	13	14	15	16	17	18	19	20	21	22	23	24
43879-6031	18	M1	M1	M1	M1	M1	M1	M1	M1	M1	M1	M1	M1	M1	M1	M1	M1	M1	M1	-	-	-	-	-	-
43879-6032	24	M5	M5	M5	M5	M5	M5	M5	M5	M5	M5	M5	M5	M5	M5	M5	M5	M5	M5	M5	M5	M5	M5	M5	M5
43879-6033	10	M4	M4	M4	M4	M4	M4	M4	M4	M4	M4	-	-	-	-	-	-	-	-	-	-	-	-	-	
43879-6034	14	S1	S1	S1	S1	S1	S1	S1	M1	M1	M1	S1	S1	S1	S1	-	-	-	-	-	-	-	-	-	
43879-6035	18	S1	S1	M1	S1	S1	S1	M1	S1	S1	S1	S1	M1	S1	S1	S1	M1	S1	S1	-	-	-	-	-	
43879-6036	14	M4	M4	M4	M4	S4	M4	S4	M4	M4	M4	M4	M4	M4	S4	-	-	-	-	-	-	-	-	-	
43879-6037	14	S4	S4	S4	S4	S4	S4	S4	M4	M4	M4	M4	M4	M4	S4	-	-	-	-	-	-	-	-	-	
43879-6038	24	M1	M1	M1	M1	M1	M1	M1	M1	M1	M1	M1	M1	M1	M1	M1	S1	M1	M1	M1	M1	S1	M1	M1	
43879-6039	10	M5	M5	M5	M5	M5	M5	M5	M5	M5	M5														
43879-6041	24	M1	M1	M1	M1	M1	M1	M1	M1	M1	M1	M1	M1	M1	M1	M1	M1	M1	M1	M1	M1	M1	M1	M1	
43879-6042	18	S4	M4	M4	M4	M4	M4	M4	M4	M4	M4	M4	M4	M4	M4	M4	M4	M4	M4	-	-	-	-	-	
43879-6043	14	S4	S4	M4	M4	S4	M4	S4	S4	S4	M4	M4	S4	S4	S4	-	-	-	-	-	-	-	-	-	
43879-6044	10	M4	M4	M4	M4	M4	M4	M4	M4	V	V	-	-	-	-	-	-	-	-	-	-	-	-	-	
43879-6045	24	S4	S4	M4	M4	M4	M4	M4	M4	M4	M4	M4	M4	S4	S4	M4	M4	M4	M4	M4	M4	M4	M4	S4	
43879-6046	06	M4	M4	M4	S4	M4	M4	-	-	-	-	-	-	-	-	-	-	-	-	-	-	-	-	-	
43879-6047	10	M1	S1	S1	M1	S1	M1	S1	S1	S1	S1	-	-	-	-	-	-	-	-	-	-	-	-	-	
43879-6048	14	M1	M1	M1	M1	S1	M1	M1	M1	M1	M1	M1	S1	M1	M1	-	-	-	-	-	-	-	-	-	

LEGEND



M = MAKE-FIRST/BREAK-LAST
S = STANDARD LENGTH

1 = BRIGHT TIN OVER NICKEL
4 = GOLD & TIN OVER NICKEL
5 = MATTE TIN OVER NICKEL

SEE SHEET 1 EC NO: UCP2013-0304 DRAWN: NGUYEN 2012/07/23 CHKD: J.BELL 2012/07/23 APPR: FSMITH 2012/07/23 G9	QUALITY SYMBOLS $\nabla F/0$ $\nabla F/0$ $\nabla F/0$	GENERAL TOLERANCES (UNLESS SPECIFIED) <table border="1"> <tr> <th></th> <th>mm</th> <th>INCH</th> </tr> <tr> <td>4 PLACES</td> <td>\pm---</td> <td>\pm---</td> </tr> <tr> <td>3 PLACES</td> <td>\pm---</td> <td>\pm.010</td> </tr> <tr> <td>2 PLACES</td> <td>\pm0.25</td> <td>\pm.014</td> </tr> <tr> <td>1 PLACE</td> <td>\pm0.35</td> <td>\pm---</td> </tr> </table>		mm	INCH	4 PLACES	\pm ---	\pm ---	3 PLACES	\pm ---	\pm .010	2 PLACES	\pm 0.25	\pm .014	1 PLACE	\pm 0.35	\pm ---	DIMENSION STYLE MM/IN DRAWN BY: POLGAR DATE: 2002/12/10 CHECKED BY: MARGULIS DATE: 2002/12/17 APPROVED BY: FSMITH DATE: 2011/05/02	SCALE: 1:1 DESIGN UNITS: METRIC THIRD ANGLE PROJECTION	TITLE: VERT. HDR. ASSY, BMI/CPI MAKE-FIRST/BREAK-LAST MINI-FIT JR. SERIES
		mm	INCH																	
	4 PLACES	\pm ---	\pm ---																	
	3 PLACES	\pm ---	\pm .010																	
2 PLACES	\pm 0.25	\pm .014																		
1 PLACE	\pm 0.35	\pm ---																		
		DRAFT WHERE APPLICABLE MUST REMAIN WITHIN DIMENSIONS	MATERIAL NO. SEE CHART	DOCUMENT NO. SD-43879-061	SHEET NO. 4 OF 4															
			SIZE: B	THIS DRAWING CONTAINS INFORMATION THAT IS PROPRIETARY TO MOLEX INCORPORATED AND SHOULD NOT BE USED WITHOUT WRITTEN PERMISSION																