



Chipsmall Limited consists of a professional team with an average of over 10 year of expertise in the distribution of electronic components. Based in Hongkong, we have already established firm and mutual-benefit business relationships with customers from,Europe,America and south Asia,supplying obsolete and hard-to-find components to meet their specific needs.

With the principle of “Quality Parts,Customers Priority,Honest Operation,and Considerate Service”,our business mainly focus on the distribution of electronic components. Line cards we deal with include Microchip,ALPS,ROHM,Xilinx,Pulse,ON,Everlight and Freescale. Main products comprise IC,Modules,Potentiometer,IC Socket,Relay,Connector.Our parts cover such applications as commercial,industrial, and automotives areas.

We are looking forward to setting up business relationship with you and hope to provide you with the best service and solution. Let us make a better world for our industry!



Contact us

Tel: +86-755-8981 8866 Fax: +86-755-8427 6832

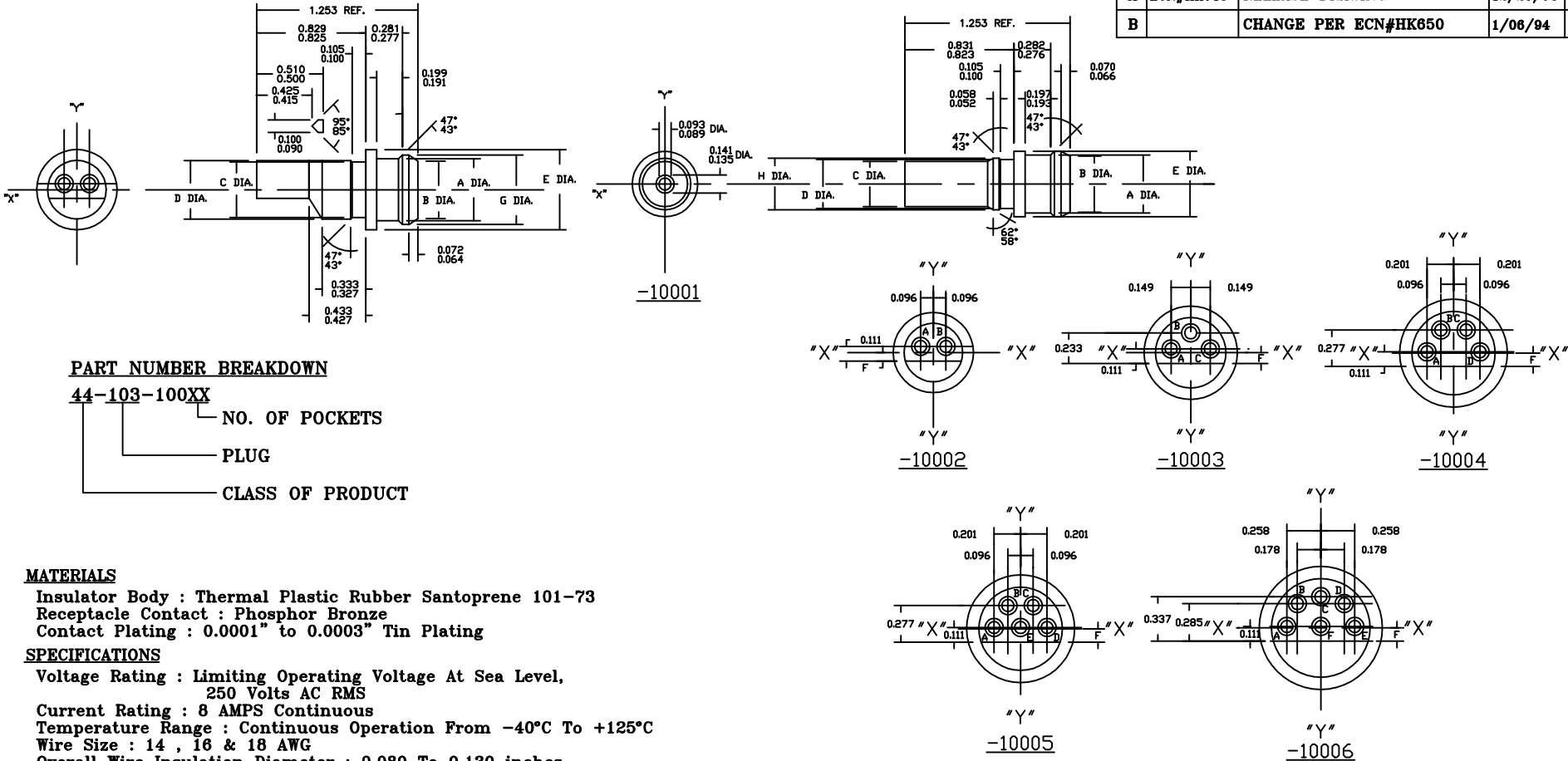
Email & Skype: info@chipsmall.com Web: www.chipsmall.com

Address: A1208, Overseas Decoration Building, #122 Zhenhua RD., Futian, Shenzhen, China

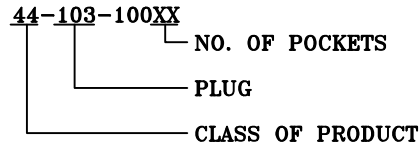


This document is the property of Amphenol Corporation and is delivered on the express condition that it is not to be disclosed, reproduced or used in whole or in part for manufacture or sale by anyone other than Amphenol Corporation without the prior consent - and that no right is granted to disclose or to use any information in this document.

REVISIONS				
SYM	ZONE	DESCRIPTION	DATE	APPROVED
A	ECN#HK643	RELEASE DRAWING	12/29/93	Y.M.LEE
B		CHANGE PER ECN#HK650	1/06/94	Y.M.LEE



PART NUMBER BREAKDOWN



MATERIALS

Insulator Body : Thermal Plastic Rubber Santoprene 101-73
 Receptacle Contact : Phosphor Bronze
 Contact Plating : 0.0001" to 0.0003" Tin Plating

SPECIFICATIONS

Voltage Rating : Limiting Operating Voltage At Sea Level,
 250 Volts AC RMS
 Current Rating : 8 AMPS Continuous
 Temperature Range : Continuous Operation From -40°C To +125°C
 Wire Size : 14 , 16 & 18 AWG
 Overall Wire Insulation Diameter : 0.080 To 0.130 inches.
 (2.03 To 3.30 mm)
 Insulation Resistance : 5,000 Megaohms Min.
 Dielectric Withstanding Voltage : 1000 VRMS

PART NUMBER	NUMBER OF POCKETS (REF)	A DIA.	B DIA.	C DIA.	D DIA.	E DIA.	F DIA.	G DIA.	H DIA.
44-103-10001	1	.443/.437	.428/.422	.346/.340	.375/.369	.500/.494	-	-	.395/.389
44-103-10002	2	.473/.467	.440/.432	.425/.419	.446/.440	.610/.604	.068/.062	.530/.524	-
44-103-10003	3	.574/.568	.541/.533	.517/.511	.538/.532	.711/.705	.085/.079	.631/.625	-
44-103-10004	4	.685/.679	.650/.644	.615/.609	.636/.630	.822/.816	.104/.098	.742/.736	-
44-103-10005	5	.685/.679	.650/.644	.615/.609	.636/.630	.822/.816	.104/.098	.742/.736	-
44-103-10006	6	.799/.793	.764/.758	.729/.723	.750/.744	.936/.930	.102/.099	.856/.850	-

CUSTOMER INFORMATION DRAWING

ITEM NO	PART OR IDENTIFICATION NO	NOMENCLATURE OR DESCRIPTION	QTY REQ'D
PARTS LIST			
UNLESS OTHERWISE SPECIFIED TOLERANCES U.S. METRIC		APPROVAL DATE	Amphenol <small>Amphenol East Asia Limited Manufacturing Operation</small>
X +/-		DRAWN MAN WONG 11/23/93	
XX +/-		CHECKED Y. M. LEE 1/06/94	
XXX +/-		APPR.	
FRACTIONS +/-		APPR.	TITLE PLUG CONNECTOR MINIATURE, 1 THRU 6 CONTACT
ANGLES +/-		APPR.	
FOR MATERIALS AND FINISHES SEE NOTES		APPR.	SIZE DRAWING NO. B C44-103-100XX B
REMOVE SHARP EDGES		ANGLE OF PROJECTION	
DIMENSIONS			SCALE NONE SHEET 1 OF 1
U.S. INCHES			
-(METRIC)- -(MM)-			