



Chipsmall Limited consists of a professional team with an average of over 10 year of expertise in the distribution of electronic components. Based in Hongkong, we have already established firm and mutual-benefit business relationships with customers from,Europe,America and south Asia,supplying obsolete and hard-to-find components to meet their specific needs.

With the principle of “Quality Parts,Customers Priority,Honest Operation,and Considerate Service”,our business mainly focus on the distribution of electronic components. Line cards we deal with include Microchip,ALPS,ROHM,Xilinx,Pulse,ON,Everlight and Freescale. Main products comprise IC,Modules,Potentiometer,IC Socket,Relay,Connector.Our parts cover such applications as commercial,industrial, and automotives areas.

We are looking forward to setting up business relationship with you and hope to provide you with the best service and solution. Let us make a better world for our industry!



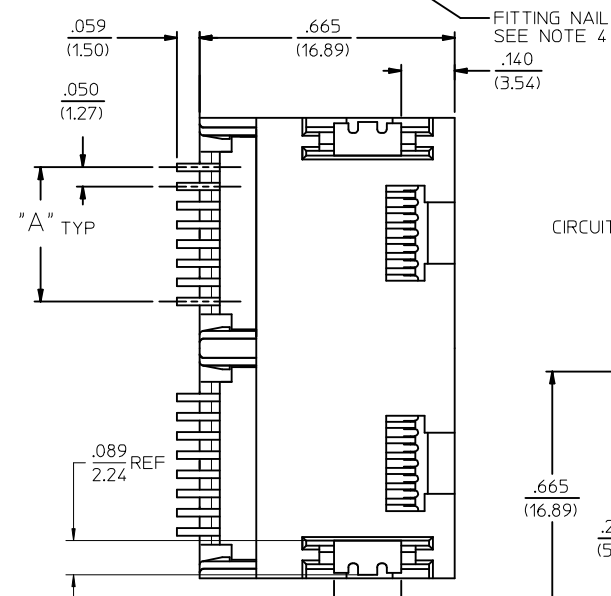
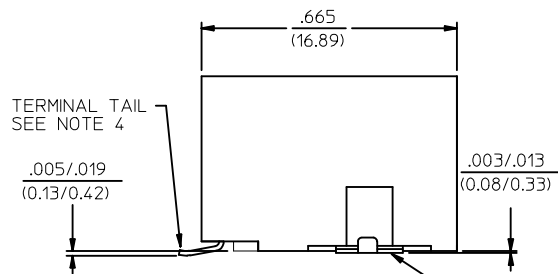
## Contact us

Tel: +86-755-8981 8866 Fax: +86-755-8427 6832

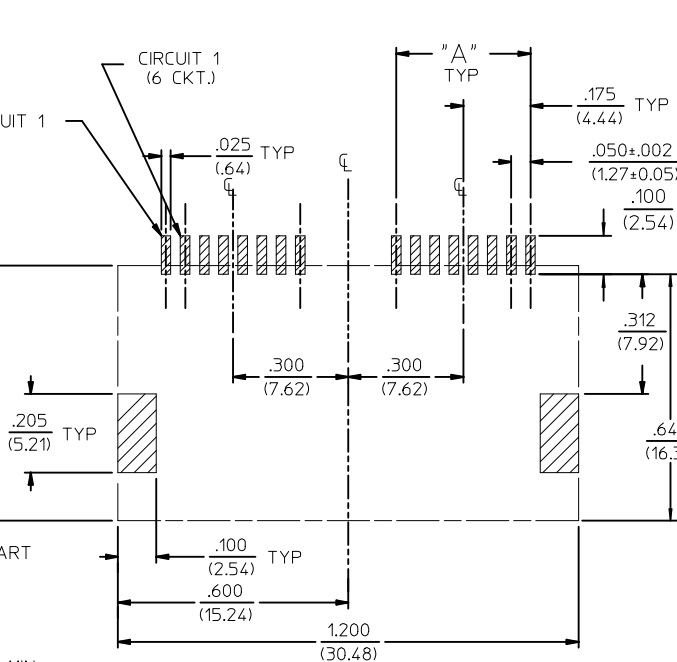
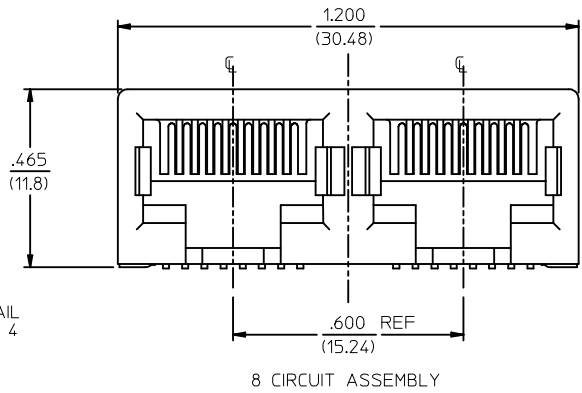
Email & Skype: info@chipsmall.com Web: www.chipsmall.com

Address: A1208, Overseas Decoration Building, #122 Zhenhua RD., Futian, Shenzhen, China

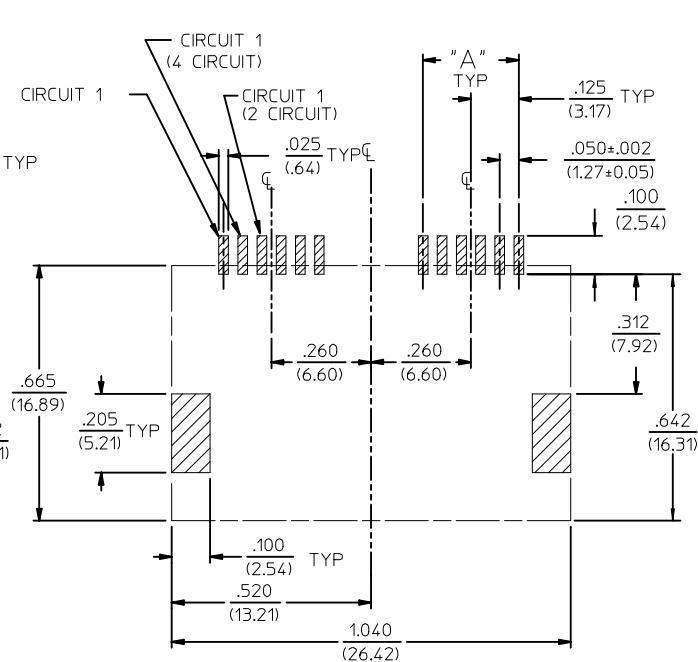
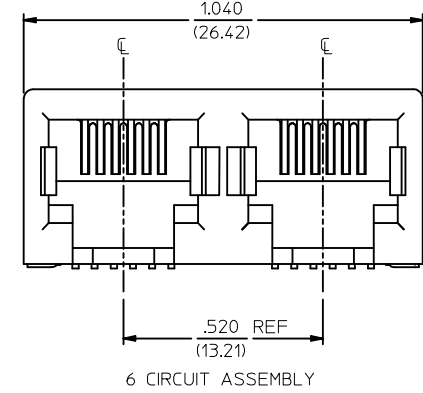




- NOTES :
- MATERIALS :  
HOUSING : NYLON, GLASS-FILLED, UL94V-0, COLOR - SEE CHART  
TERMINALS : PHOSPHOR BRONZE, .012/(0.30)  
FITTING NAILS : BRASS ALLOY, .010/(0.25)
  - FINISH :  
TERMINAL PLATING OPTIONS : (SEE TABLE)  
(A) SELECT GOLD IN CONTACT AREA: .000050/(0.00127) MIN.,  
\*SELECT MATTE TIN IN PC TAIL AREA: .000100/(0.00254) MIN.,  
WITH OVERALL NICKEL UNDERPLATE: .000050/(0.00127) MIN.  
(B) SELECT GOLD IN CONTACT AREA: .000030/(0.00076) MIN.,  
\*SELECT MATTE TIN IN PC TAIL AREA: .000100/(0.00254) MIN.,  
WITH OVERALL NICKEL UNDERPLATE: .000050/(0.00127) MIN.  
(C) SELECT GOLD IN CONTACT AREA: .000015/(0.00038) MIN.,  
\*SELECT MATTE TIN IN PC TAIL AREA: .000100/(0.00254) MIN.,  
WITH OVERALL NICKEL UNDERPLATE: .000050/(0.00127) MIN.
  - FITTING NAILS :  
\*100 MICROINCHES MATTE TIN OVER 50 MICROINCHES NICKEL UNDERPLATE  
\*THE PRIMARY SHIPPING CARTON WILL BE LABELED "ELV AND RoHS COMPLIANT". CARTONS WITHOUT THIS LABEL MAY CONTAIN PRODUCT WITH TIN-LEAD IN THE PC TAIL AREA.
  - PRODUCT SPECIFICATION : PS-43743-001
  - COPLANARITY SPECIFICATIONS:  
WITH THE MODULAR JACK SITTING ON A LEVEL SURFACE, THE MAXIMUM GAP BETWEEN THE LEVEL SURFACE AND ALL TERMINAL TAILS AND BOTH FITTING NAILS IS .006/(0.15).
  - FOR ASSEMBLIES HAVING VOIDED CIRCUITS, THE TAIL PORTION IS CUT AND REMOVED. THE MATING PORTION OF THE TERMINAL REMAINS INTACT. VOIDED CIRCUITS MUST BE THE SAME FOR BOTH PORTS.
  - CONVECTION SOLDERING TECHNOLOGY SHOULD BE USED WHEN GANGING MODULAR JACKS WITH INBOARD NAILS SIDE-BY-SIDE.
  - THIS PART CONFORMS TO CLASS B REQUIREMENTS OF COSMETIC SPECIFICATION PS-45499-002.



PC BOARD LAYOUT FOR 8 POSITION HOUSING  
(COMPONENT SIDE OF BOARD)



PC BOARD LAYOUT FOR 6 POSITION HOUSING  
(COMPONENT SIDE OF BOARD)

2	G1
1	G2
	SHREV

REVISED NOTES	QUALITY SYMBOLS
EC NO: UCP2009-1244	▽=0
DRWNG: KLOSTNER 2008/12/10	▽=0
CHKD: JEBEL 2008/12/10	
APPR: FBMITH 2008/12/10	
DESCRIPTION	
G2	

GENERAL TOLERANCES (UNLESS SPECIFIED)	
mm	INCH
4 PLACES ± ---	± ---
3 PLACES ± ---	± .010
2 PLACES ± .25	± .015
1 PLACE ± 0.38	± ---
ANGULAR ± 1/2°	
DRAFT WHERE APPLICABLE MUST REMAIN WITHIN DIMENSIONS	

DIMENSION STYLE	
IN/MM	
DRAWN BY	DATE
MUELLER	98/06/11
CHECKED BY	DATE
ROBERTS	98/06/16
APPROVED BY	DATE
EDGLEY	98/06/17
MATERIAL NO.	
SEE SHT 2	
SIZE	
C	

SCALE	DESIGN UNITS	THIRD ANGLE PROJECTION
1:1	INCH	
TITLE		
4, 6, & 8 CIRCUIT DUAL PORT SMT MODULAR JACK W/ FLUSH MOUNT NAILS		
MOLEX INCORPORATED		
DOCUMENT NO.	SHEET NO.	
SD-44193-001	1 OF 2	
THIS DRAWING CONTAINS INFORMATION THAT IS PROPRIETARY TO MOLEX INCORPORATED AND SHOULD NOT BE USED WITHOUT WRITTEN PERMISSION		