



Chipsmall Limited consists of a professional team with an average of over 10 year of expertise in the distribution of electronic components. Based in Hongkong, we have already established firm and mutual-benefit business relationships with customers from,Europe,America and south Asia,supplying obsolete and hard-to-find components to meet their specific needs.

With the principle of “Quality Parts,Customers Priority,Honest Operation,and Considerate Service”,our business mainly focus on the distribution of electronic components. Line cards we deal with include Microchip,ALPS,ROHM,Xilinx,Pulse,ON,Everlight and Freescale. Main products comprise IC,Modules,Potentiometer,IC Socket,Relay,Connector.Our parts cover such applications as commercial,industrial, and automotives areas.

We are looking forward to setting up business relationship with you and hope to provide you with the best service and solution. Let us make a better world for our industry!




Contact us

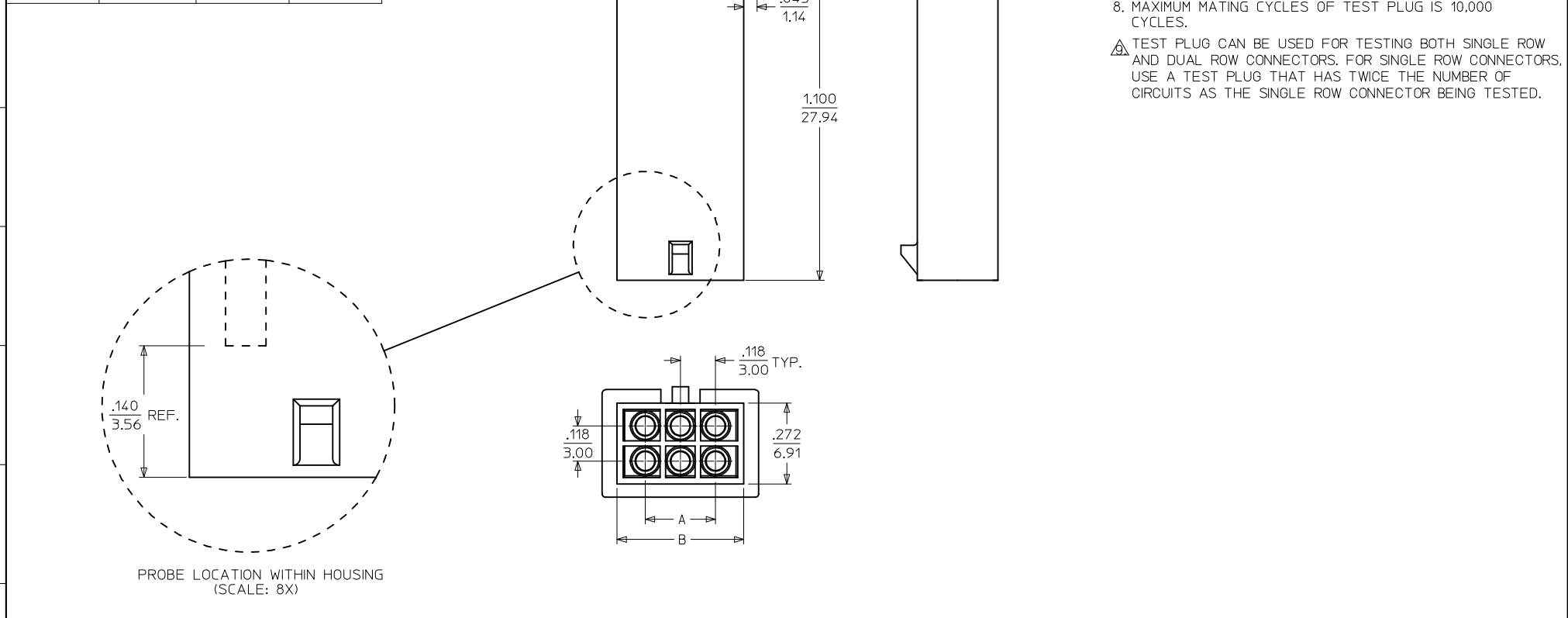
Tel: +86-755-8981 8866 Fax: +86-755-8427 6832

Email & Skype: info@chipsmall.com Web: www.chipsmall.com

Address: A1208, Overseas Decoration Building, #122 Zhenhua RD., Futian, Shenzhen, China



13	12	11	10	9	8	7	6	5	4	3	2	1
MATERIAL NUMBER	NUMBER OF CIR 	DIM. "A"	DIM. "B"									
44242-0001	4	.118/(3.00)	.308/(7.82)									
44242-0002	6	.236/(6.00)	.426/(10.82)									
44242-0003	8	.354/(9.00)	.544/(13.82)									
44242-0004	10	.472/(12.00)	.662/(16.82)									
44242-0005	12	.591/(15.00)	.780/(19.82)									
44242-0006	14	.709/(18.00)	.898/(22.82)									
44242-0007	16	.827/(21.00)	1.017/(25.82)									
44242-0008	18	.945/(24.00)	1.135/(28.82)									
44242-0009	20	1.063/(27.00)	1.253/(31.82)									
44242-0010	22	1.181/(30.00)	1.371/(34.82)									
44242-0011	24	1.299/(33.00)	1.489/(37.82)									



FIX NOTE 7/DIMS EC NO: UCP2013-1516 H DRWN:MMSTROH CHKD:SSOUSEK APPR:FSMLTH	REV	DESCRIPTION	QUALITY SYMBOLS	GENERAL TOLERANCES (UNLESS SPECIFIED)		DIMENSION STYLE		SCALE	DESIGN UNITS	THIRD ANGLE
						IN/MM		4:1	INCH	PROJECTION
						DRAWN BY	DATE	TITLE MICRO-FIT(3.0) 4-24 CIRCUIT TEST PLUG ASSY - BMI COMPATIBLE molex		
				4 PLACES ± --- ± ---		SOMMER	1998/09/08			
				3 PLACES ± --- ± .010		CHECKED BY	DATE			
				2 PLACES ± 0.25 ± .014		EDGLEY	1998/09/10			
				1 PLACE ± 0.35 ± ---		APPROVED BY	DATE			
				0 PLACE ± ±		EDGLEY	1998/09/10	DOCUMENT NO. SD-44242-001 SHEET NO. 1 OF 1		
				ANGULAR ±1/2°		MATERIAL NO.				
				DRAFT WHERE APPLICABLE MUST REMAIN WITHIN DIMENSIONS		SEE CHART				
		SIZE C	THIS DRAWING CONTAINS INFORMATION THAT IS PROPRIETARY TO MOLEX INCORPORATED AND SHOULD NOT BE USED WITHOUT WRITTEN PERMISSION							