



Chipsmall Limited consists of a professional team with an average of over 10 year of expertise in the distribution of electronic components. Based in Hongkong, we have already established firm and mutual-benefit business relationships with customers from,Europe,America and south Asia,supplying obsolete and hard-to-find components to meet their specific needs.

With the principle of "Quality Parts,Customers Priority,Honest Operation,and Considerate Service",our business mainly focus on the distribution of electronic components. Line cards we deal with include Microchip,ALPS,ROHM,Xilinx,Pulse,ON,Everlight and Freescale. Main products comprise IC,Modules,Potentiometer,IC Socket,Relay,Connector.Our parts cover such applications as commercial,industrial, and automotives areas.

We are looking forward to setting up business relationship with you and hope to provide you with the best service and solution. Let us make a better world for our industry!



Contact us

Tel: +86-755-8981 8866 Fax: +86-755-8427 6832

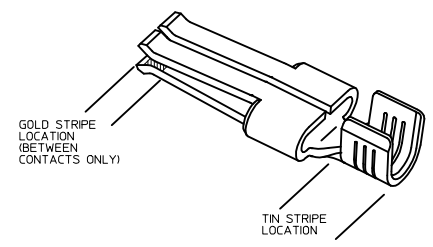
Email & Skype: info@chipsmall.com Web: www.chipsmall.com

Address: A1208, Overseas Decoration Building, #122 Zhenhua RD., Futian, Shenzhen, China



PART NUMBER	PLATING	RECOMMENDED WIRE SIZE	DIM 'A' HEIGHT	DIM 'B' WIDTH	DIM 'C' GAP	DIM 'D' TIPS	RECOMMENDED CRIMP APPLICATOR	MATING CONTACT	PACKAGE SIZE
44262-4334	30μ * GOLD STRIPE OVER 50μ * NICKEL OVERALL WITH 80-130μ * SELECT TIN	8 AWG (2) 12 AWG	7.42±0.5 .292±.020	5.84±0.5 .230±.020			63832-6300	44262-6*** SEE MOLEX DRAWING SD-44262-026 OR WITH BLADES 0.64/.025 THICK X 6.10/.240 MIN WIDE	1800 PARTS/ REEL
44262-4332	30μ * GOLD STRIPE OVER 50μ * NICKEL OVERALL WITH 80-130μ * SELECT TIN	10-12 AWG (2) 14 AWG	5.97±0.5 .235±.020	5.33±0.5 .210±.020	0.10/.004	2.54/.100 REF	63832-6000		2500 PARTS/ REEL
44262-4336	30μ * GOLD STRIPE OVER 50μ * NICKEL OVERALL WITH 80-130μ * SELECT TIN	14-16 AWG (2) 16 AWG (2) 18 AWG	5.20±0.5 .205±.020	5.33±0.5 .210±.020			63832-6100		
44262-4434	30μ * GOLD STRIPE OVER 50μ * NICKEL OVERALL WITH 80-130μ * SELECT TIN	8 AWG (2) 12 AWG	7.42±0.5 .292±.020	5.84±0.5 .230±.020			63832-6300	FOR USE WITH BLADES 1.27/.050 THICK X 6.10/.240 MIN WIDE	1800 PARTS/ REEL
44262-4432	30μ * GOLD STRIPE OVER 50μ * NICKEL OVERALL WITH 80-130μ * SELECT TIN	10-12 AWG (2) 14 AWG	5.97±0.5 .235±.020	5.33±0.5 .210±.020	0.64/.025	3.07/.121 REF	63832-6000		2500 PARTS/ REEL
44262-4436	30μ * GOLD STRIPE OVER 50μ * NICKEL OVERALL WITH 80-130μ * SELECT TIN	14-16 AWG (2) 16 AWG (2) 18 AWG	5.20±0.5 .205±.020	5.33±0.5 .210±.020			63832-6100		
44262-4534	30μ * GOLD STRIPE OVER 50μ * NICKEL OVERALL WITH 80-130μ * SELECT TIN	8 AWG (2) 12 AWG	7.42±0.5 .292±.020	5.84±0.5 .230±.020			63832-6300	FOR USE WITH BLADES 0.81/.032 THICK X 6.10/.240 MIN WIDE RECOMMENDED FOR 6 CIRCUITS AND ABOVE	1800 PARTS/ REEL
44262-4532	30μ * GOLD STRIPE OVER 50μ * NICKEL OVERALL WITH 80-130μ * SELECT TIN	10-12 AWG (2) 14 AWG	5.97±0.5 .235±.020	5.33±0.5 .210±.020	0.30/.012	2.74/.108 REF	63832-6000		2500 PARTS/ REEL
44262-4536	30μ * GOLD STRIPE OVER 50μ * NICKEL OVERALL WITH 80-130μ * SELECT TIN	14-16 AWG (2) 16 AWG (2) 18 AWG	5.20±0.5 .205±.020	5.33±0.5 .210±.020			63832-6100		
44262-4634	30μ * GOLD STRIPE OVER 50μ * NICKEL OVERALL WITH 80-130μ * SELECT TIN	8 AWG (2) 12 AWG	7.42±0.5 .292±.020	5.84±0.5 .230±.020			63832-6300	FOR USE WITH BLADES 1.27/.050 THICK X 6.10/.240 MIN WIDE RECOMMENDED FOR 6 CIRCUITS AND ABOVE	1800 PARTS/ REEL
44262-4632	30μ * GOLD STRIPE OVER 50μ * NICKEL OVERALL WITH 80-130μ * SELECT TIN	10-12 AWG (2) 14 AWG	5.97±0.5 .235±.020	5.33±0.5 .210±.020	0.89/.035	3.33/.131 REF	63832-6000		2500 PARTS/ REEL
44262-4636	30μ * GOLD STRIPE OVER 50μ * NICKEL OVERALL WITH 80-130μ * SELECT TIN	14-16 AWG (2) 16 AWG (2) 18 AWG	5.20±0.5 .205±.020	5.33±0.5 .210±.020			63832-6100		

- NOTES:
1. MATERIAL: COPPER ALLOY .032 IN THICK
 2. FINISH: PER MOLEX PLATING SPECIFICATION ES-88 - SEE CHART
 3. FOR CRIMP APPLICATOR SEE CHART
 4. FOR CRIMP TOOLING CONTACT MOLEX OR VISIT THE MOLEX WEBSITE AT: WWW.MOLEX.COM
 5. STANDARD PACKAGE SIZE: SEE CHART
 6. SEE PRODUCT SPECIFICATION: PS-44262-001 FOR MORE INFORMATION
 7. PARTS ARE RoHS COMPLIANT
 8. FOR MATING CONTACT: SEE CHART
 9. FOR CRIMP SET UP INFORMATION SEE MOLEX APPLICATION SPECIFICATION DOCUMENT:
8 AWG - ATS-638326300
10/12 AWG - ATS-638326000
14/16 AWG - ATS-638326100



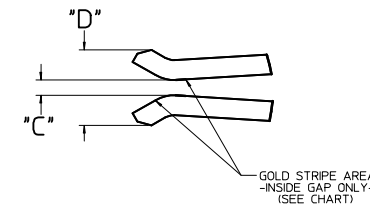
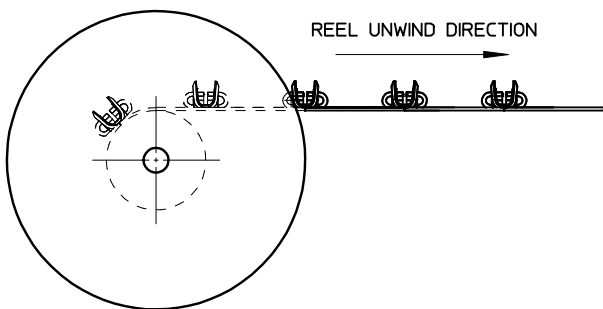
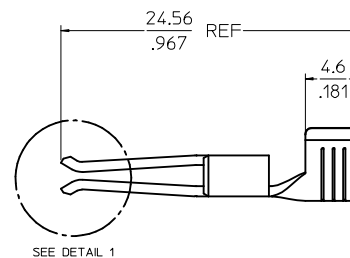
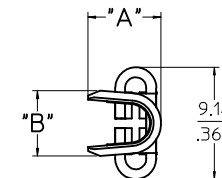
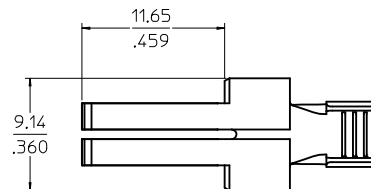
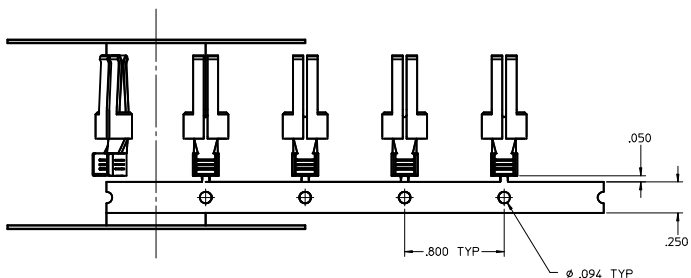
REMOVE THRU DIE PARTS FROM CHART

DEC NO: UCP2016-1882
DRAWN BY: SCHWABER
CHKD: SCHWABER
APPROVED: SCHWABER
DATE: 2015/07/22
REV: 2015/11/20

QUALITY SYMBOLS	GENERAL TOLERANCES (UNLESS SPECIFIED)		DIMENSION STYLE		SCALE	DESIGN UNITS	THIRD ANGLE PROJECTION
	mm	INCH	MM/MIN	DATE			
▽=0	4 PLACES ±.010	±.010	BKOSTIC	2006/11/13	1:1	INCH	
▽=0	3 PLACES ±.010	±.010	BKOSTIC	2006/11/13			
▽=0	2 PLACES ±0.25	±.010	BKOSTIC	2006/11/13			
▽=0	1 PLACE ±0.25	±.010	BKOSTIC	2006/11/13			
	ANGULAR ±1/2°		APATEL		2006/11/14		
DRAFT WHERE APPLICABLE MUST REMAIN WITHIN DIMENSIONS			MATERIAL NO. SEE CHART		DOCUMENT NO. SD-44262-100		SHEET NO. 1 OF 2

THIS DRAWING CONTAINS INFORMATION THAT IS PROPRIETARY TO MOLEX INCORPORATED AND SHOULD NOT BE USED WITHOUT WRITTEN PERMISSION

20 19 18 17 16 15 14 13 12 11 10 9 8 7 6 5 4 3 2 1



DETAIL 1
SCALE 10:1

SEE SHEET 1 IEC NO. UCP2016-1882 DRAWN: SCHAEFER 2015/07/22 CHKD: APPR: BPI/SZCZOR 2015/11/30 D0	QUALITY SYMBOLS	GENERAL TOLERANCES (UNLESS SPECIFIED)	DIMENSION STYLE	SCALE	DESIGN UNITS	THIRD ANGLE PROJECTION	
	▽=0	4 PLACES ± .010	MM/IN	5:1	INCH	☉	
	▽=0	3 PLACES ± .010					
	▽=0	2 PLACES ± 0.25					
		1 PLACE ± 0.25					
		ANGULAR ±1/2°					
		DRAFT WHERE APPLICABLE MUST REMAIN WITHIN DIMENSIONS					
			DRAWN BY	DATE	TITLE		
			BKOSTIC	2006/11/13	TERMINAL - RECEPTACLE POWER CONTACT		
			CHECKED BY	DATE			
			BKOSTIC	2006/11/13			
			APPROVED BY	DATE			
			APATEL	2006/11/14			
			MATERIAL NO.	DOCUMENT NO.			
			SEE CHART		MOLEX INCORPORATED		
					SD-44262-100		
			SIZE			SHEET NO.	
			D			2 OF 2	
			THIS DRAWING CONTAINS INFORMATION THAT IS PROPRIETARY TO MOLEX INCORPORATED AND SHOULD NOT BE USED WITHOUT WRITTEN PERMISSION				

19 18 17 16 15 14 13 12 11 10 9 8 7 6 5 4 3 2 1