



Chipsmall Limited consists of a professional team with an average of over 10 year of expertise in the distribution of electronic components. Based in Hongkong, we have already established firm and mutual-benefit business relationships with customers from,Europe,America and south Asia,supplying obsolete and hard-to-find components to meet their specific needs.

With the principle of “Quality Parts,Customers Priority,Honest Operation,and Considerate Service”,our business mainly focus on the distribution of electronic components. Line cards we deal with include Microchip,ALPS,ROHM,Xilinx,Pulse,ON,Everlight and Freescale. Main products comprise IC,Modules,Potentiometer,IC Socket,Relay,Connector.Our parts cover such applications as commercial,industrial, and automotives areas.

We are looking forward to setting up business relationship with you and hope to provide you with the best service and solution. Let us make a better world for our industry!



Contact us

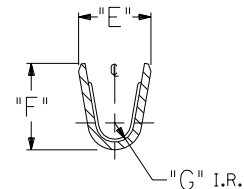
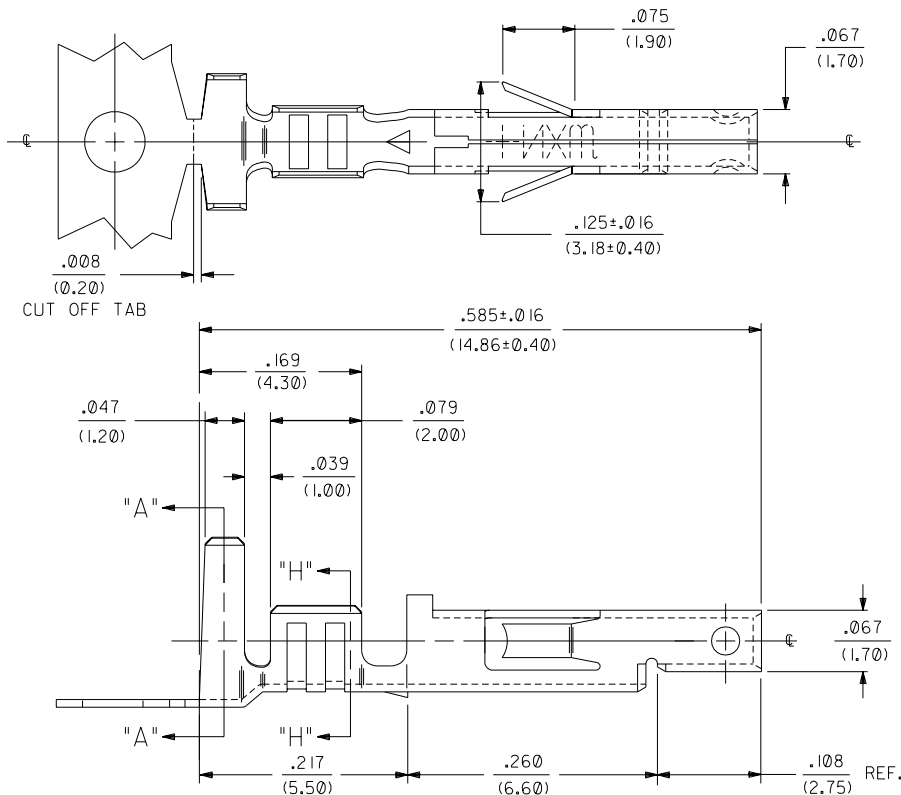
Tel: +86-755-8981 8866 Fax: +86-755-8427 6832

Email & Skype: info@chipsmall.com Web: www.chipsmall.com

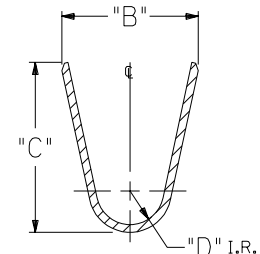
Address: A1208, Overseas Decoration Building, #122 Zhenhua RD., Futian, Shenzhen, China



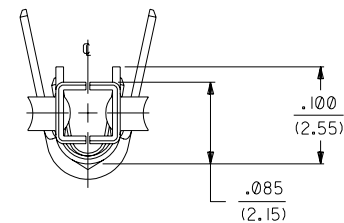
13	12	11	10	9	8	7	6	5	4	3	2	44476
ITEM NO.	FORM	WIRE GAGE	QUANTITY PER REEL	DIM. "B"	DIM. "C"	DIM. "D"	DIM. "E"	DIM. "F"	DIM. "G"			
44476-1211	CHAIN	18-20 GA.	4,000	.142±.012	.177±.016	.035	.075±.012	.091±.016	.020			
44476-1212	LOOSE			(3.60±0.30)	(4.50±0.40)	(0.90)	(1.90±0.30)	(2.30±0.40)	(0.50)			
44476-3211	CHAIN	16 GA.	4,000	.142±.012	.177±.016	.035	.091±.012	.106±.016	.024			
44476-3212	LOOSE			(3.60±0.30)	(4.50±0.40)	(0.90)	(2.30±0.30)	(2.70±0.40)	(0.60)			



SECT. "H-H"



SECT. "A-A"



LEGEND:

44476 - * * | *

BASE NO. _____

WIRE GAGE _____

1 = 18-20 AWG

3 = 16 AWG

PLATING _____

SEE NOTE 2



CHAIN OR LOOSE _____

"I" = CHAIN

"2" = LOOSE

NOTES:

1. MATERIAL: OLIN ALLOY C197, .008/(.203) THICK.
2. FINISH:
 - *2= .000030/(.00076) MIN. SELECT GOLD, .000100/(.00254) MIN. MATTE TIN OVER .000050/(.00127) MIN. NICKEL OVERALL.
 - *THE PRIMARY SHIPPING CARTON WILL BE LABELED "COMPLIANT TO RoHS DIRECTIVE 2002/95/EC AND ELV ANNEX II OF DIRECTIVE 2000/53/EC." CARTONS WITHOUT THIS LABEL MAY CONTAIN PRODUCT WITH TIN-LEAD PLATING.
3. PRODUCT SPECIFICATIONS AND PROCESSING PARAMETERS: SEE PS-44476-001.
4. MATES WITH 44478 MALE TERMINAL AND 43810, 44068, 44472, 44473, 44474, 42404, 5569 AND 30070 SERIES CONNECTORS.
5. TERMINAL FOR USE WITH 5557, 30067 & 42474 SERIES HOUSINGS.
6. PART DESIGNED IN METRIC.
7. ITEM NUMBERS PRECEDED BY AN "X" IN THE CHART ARE NOT AVAILABLE.

REMOVED TIN-LEAD; EC NO. UCP2004-1821 DRWG: CAMPBELL 04/03/19 CHK: GPOLGAR 04/03/19 APPR: MARGULIS 04/03/19	DESCRIPTION	QUALITY SYMBOLS MAJOR CRITICAL	GENERAL TOLERANCES: (UNLESS SPECIFIED)		SCALE 10:1	DESIGN UNITS <input checked="" type="checkbox"/> mm <input type="checkbox"/> INCH	 THIRD ANGLE PROJECTION	DIMENSIONS: <input type="checkbox"/> mm <input checked="" type="checkbox"/> INCH <input type="checkbox"/> mm ONLY		SHT	REV	
				mm	INCH	DRAWN BY & DATE JIWANG 00/11/20		TITLE: TERM., FEMALE, CRIMP, MINI-FIT H.C.S. SERIES, BLANK-PLATE-FORM  MOLEX INCORPORATED				
			4 PLACES	±0.---	±.---	CHECKED BY & DATE MBANDURA 00/11/20						
			3 PLACES	±0.---	±0.10	APPROVED BY & DATE REDGLEY 00/11/20						
			2 PLACES	±0.25	±0.14							
1 PLACE	±0.36	±.---										
			ANGULAR: ±1/2 °		CAD FILENAME		MATERIAL NO. 444760002		DRAWING NO. SD -44476-002		SHEET NO. 1 OF 1	
C	REV		DRAFT WHERE APPLICABLE MUST REMAIN WITHIN DIMENSIONS			THIS DRAWING CONTAINS INFORMATION THAT IS PROPRIETARY TO MOLEX INCORPORATED AND SHOULD NOT BE USED WITHOUT WRITTEN PERMISSION.						SIZE C