



Chipsmall Limited consists of a professional team with an average of over 10 year of expertise in the distribution of electronic components. Based in Hongkong, we have already established firm and mutual-benefit business relationships with customers from,Europe,America and south Asia,supplying obsolete and hard-to-find components to meet their specific needs.

With the principle of “Quality Parts,Customers Priority,Honest Operation,and Considerate Service”,our business mainly focus on the distribution of electronic components. Line cards we deal with include Microchip,ALPS,ROHM,Xilinx,Pulse,ON,Everlight and Freescale. Main products comprise IC,Modules,Potentiometer,IC Socket,Relay,Connector.Our parts cover such applications as commercial,industrial, and automotives areas.

We are looking forward to setting up business relationship with you and hope to provide you with the best service and solution. Let us make a better world for our industry!



## Contact us

Tel: +86-755-8981 8866 Fax: +86-755-8427 6832

Email & Skype: info@chipsmall.com Web: www.chipsmall.com

Address: A1208, Overseas Decoration Building, #122 Zhenhua RD., Futian, Shenzhen, China



ITEM	MOLEX NO	DESCRIPTION	QTY	UOM
A,C	5055650301	1.25WTB SINGLE REC HSG 3CKT BLACK	2	PC
B	5054311000	1.25 ROBUST W/B CRIMP TERM.	6	PC
D	884260070	PAPER PRINTED PAPER WHITE (S100X150YAJ)	1	PC

CKT NO		WIRE #	COLOR	DESCRIPTION
From	To			
A1	C3	884530501	BLACK	1X26AWG DISC PVC BK 0.98MM UL1061 HOOKUP
A2	C2			
A3	C1			

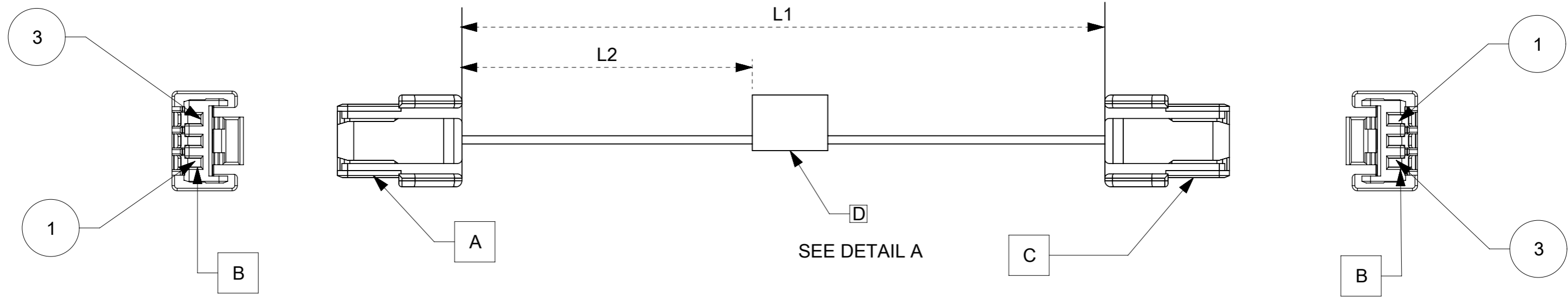


TABLE			
PART NUMBER	L1	L2	TITLE
451110300	50±5	18REF	MicroLock Plus Cable Black 3-ckt 50MM
451110301	100±8	44REF	MicroLock Plus Cable Black 3-ckt 100MM
451110302	150±10	69REF	MicroLock Plus Cable Black 3-ckt 150MM
451110303	300±10	144REF	MicroLock Plus Cable Black 3-ckt 300MM
451110305	450±15	219REF	MicroLock Plus Cable Black 3-ckt 450MM
451110306	600±15	294REF	MicroLock Plus Cable Black 3-ckt 600MM

- NOTES**
1. This product must meet 2011/65/EC ROHS compliance.
  2. Cable assembly to be tested 100% for continuity and polarity.
  3. Label text must be 2mm max. In height with Arial font.
  4. Connector view shown is from mating side.

DATE	REV	DESCRIPTION	CHANGER
2017.07.11	A	INITIAL RELEASE.	RDESAI01
2017.10.16	B	Document type change from RSD to SD	RDESAI01

P/N:45111XXXX — MOLEX PN  
 MOLEX  
 Batch WK/YR

DETAIL A

QUALITY SYMBOLS FA = 0 FE = 0 FB = 0 FV = 0 FC = 0 FX = 0 FS = 0 FT = 0	THIS DRAWING CONTAINS INFORMATION THAT IS PROPRIETARY TO MOLEX ELECTRONIC TECHNOLOGIES, LLC AND SHOULD NOT BE USED WITHOUT WRITTEN PERMISSION		DIMENSION UNITS: mm SCALE: NTS		
	GENERAL TOLERANCES (UNLESS SPECIFIED) ANGULAR TOL ± ° 4 PLACES ± 3 PLACES ± 2 PLACES ± 1 PLACE ± 0 PLACES ±	DRWN BY: RDESAI01 DATE: 2017/10/16	DATE: 2017/07/11 CHK'D BY:	DATE: 2017/07/14 APPR BY: MNARAYAN01	
EC NO: 123387 DRWN: RDESAI01 CHK'D: MNARAYAN01 APPR: MNARAYAN01		DRAFT WHERE APPLICABLE MUST REMAIN WITHIN DIMENSIONS		DRAWING SIZE: A3 THIRD ANGLE PROJECTION	PRODUCT CUSTOMER DRAWING
RELEASE STATUS: P1 RELEASE DATE: 16.10.2017 10:32:11		SERIES: 45111	MATERIAL NUMBER: SEE TABLE	CUSTOMER: GENERAL MARKET	DOCUMENT NUMBER: 451110300 DOC TYPE: PSD DOC PART: 000 SHEET NUMBER: 1 OF 1