



Chipsmall Limited consists of a professional team with an average of over 10 year of expertise in the distribution of electronic components. Based in Hongkong, we have already established firm and mutual-benefit business relationships with customers from,Europe,America and south Asia,supplying obsolete and hard-to-find components to meet their specific needs.

With the principle of “Quality Parts,Customers Priority,Honest Operation,and Considerate Service”,our business mainly focus on the distribution of electronic components. Line cards we deal with include Microchip,ALPS,ROHM,Xilinx,Pulse,ON,Everlight and Freescale. Main products comprise IC,Modules,Potentiometer,IC Socket,Relay,Connector.Our parts cover such applications as commercial,industrial, and automotives areas.

We are looking forward to setting up business relationship with you and hope to provide you with the best service and solution. Let us make a better world for our industry!



Contact us

Tel: +86-755-8981 8866 Fax: +86-755-8427 6832

Email & Skype: info@chipsmall.com Web: www.chipsmall.com

Address: A1208, Overseas Decoration Building, #122 Zhenhua RD., Futian, Shenzhen, China

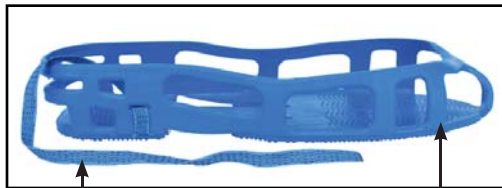




Made in the United States of America



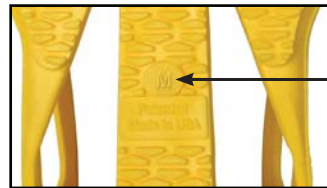
Available in blue and yellow



Side View

B

A



Bottom View

C

Components

- A. Non-Marring Thermoplastic Elastomer (TPE)
- B. 30 Inch Conductive 8-Strand Nylon Polyester Grounding Tab
- C. Size molded on bottom of unit

Electrical Properties

Property	Test Method	Value
Point to Groundable Point Resistance:	ANSI/ESD STM97.1, ESD SP9.2, ESD TR53	< 1 x 10 ⁹ ohms
Walking Voltage Generation:	ANSI/ESD STM97.2	<50 Volts (conductive flooring)
	ANSI/ESD STM97.2	<100 Volts (dissipative flooring)

See independent test lab report [here](#).

Specifications

Construction: Thermoplastic Elastomer (TPE)

Yellow	04564	04565	04566	04567
Blue	04597	04594	04595	04596
Size	Small	Medium	Large	XLarge
Length	9.5"	10.25"	11"	11.75"
Width	3.25"	3.75"	4.375"	4.625"
Shoe Size Women	5-8	8.5-10.5	11-13.5	13.5+
Shoe Size Men	4-6	6.5-8.5	9-12	12.5-14.5
Shoe Size EU	35-38	39-43	44-46	46-48

Sold in pairs

Unless otherwise noted, tolerance +/- 10%

Specifications and procedures subject to change without notice.

RoHS 2 and REACH Statement

None of the RoHS 2 restricted materials or REACH substances of very high concern are intentionally added in manufacturing this product. Ref: European Union Directive 2011/65/EU and Regulation (EC) No. 1907/2006/CE. See Desco Limited Warranty at [Desco.com](#).

"All personnel shall be bonded or electrically connected to the grounding / equipotential bonding system when handling ESDS [ESD sensitive] items. ...For standing operations, personnel shall be grounded via a wrist strap or by a footwear/ flooring system." [ANSI/ESD S20.20 section 8.2 Personnel Grounding]

"If the contact area between the bottom of the foot and the floor is not continuous, charge generation may occur; especially when a person is walking. Heel straps must be worn on both feet to minimize the amount of time that the body of the person is isolated from ground while walking." [ESD Handbook ESD TR20.20 section 5.2.3 Flooring-Footwear System]

*Patent US008189318B2

stat-A-REST™ Foot Grounders

DESCO

DESCO WEST: 3651 WALNUT AVE., CHINO, CA 91710 WEB SITE: [Desco.com](#)
PHONE (909) 627-8178

DESCO EAST: ONE COLGATE WAY, CANTON, MA 02021-1407
PHONE (781) 821-8370

**DRAWING
NUMBER**
04594

DATE:
August
2016