



Chipsmall Limited consists of a professional team with an average of over 10 year of expertise in the distribution of electronic components. Based in Hongkong, we have already established firm and mutual-benefit business relationships with customers from,Europe,America and south Asia,supplying obsolete and hard-to-find components to meet their specific needs.

With the principle of "Quality Parts,Customers Priority,Honest Operation,and Considerate Service",our business mainly focus on the distribution of electronic components. Line cards we deal with include Microchip,ALPS,ROHM,Xilinx,Pulse,ON,Everlight and Freescale. Main products comprise IC,Modules,Potentiometer,IC Socket,Relay,Connector.Our parts cover such applications as commercial,industrial, and automotives areas.

We are looking forward to setting up business relationship with you and hope to provide you with the best service and solution. Let us make a better world for our industry!



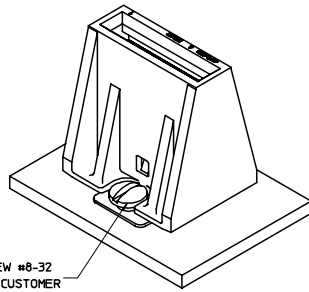
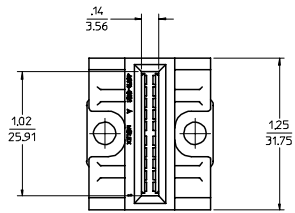
Contact us

Tel: +86-755-8981 8866 Fax: +86-755-8427 6832

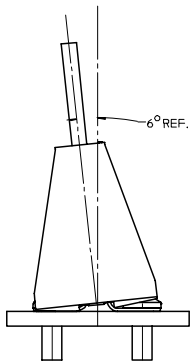
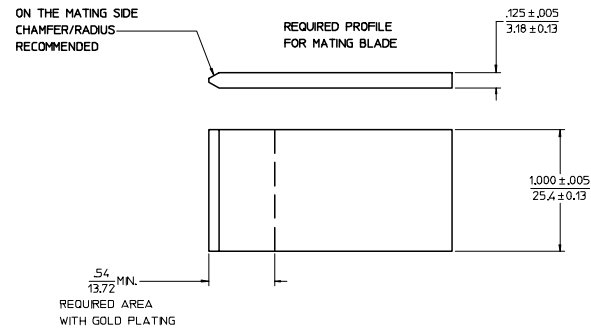
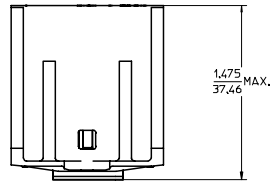
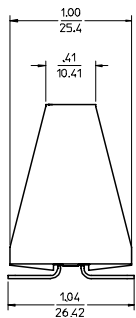
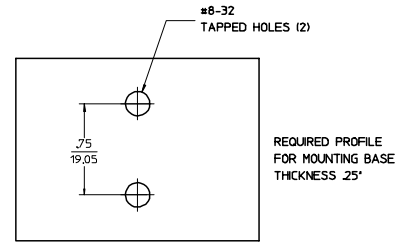
Email & Skype: info@chipsmall.com Web: www.chipsmall.com

Address: A1208, Overseas Decoration Building, #122 Zhenhua RD., Futian, Shenzhen, China

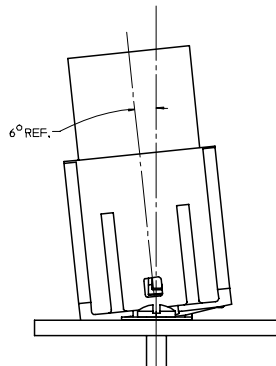




MACHINE SCREW #8-32
SUPPLIED BY CUSTOMER
(2 REQUIRED)



CONNECTOR IS ALLOWED
TO "LEAN" 6° IN EITHER DIRECTION
(AS SHOWN)



NOTE:

- MATERIALS:
TERMINALS: HIGH CONDUCTIVITY COPPER ALLOY
PLATING: GOLD PLATED IN CONTACT AREA
HOUSING: ROHS COMPLIANT 94V-0 THERMOPLASTIC
- MEETS MOLEX PRODUCT SPEC. PS-45711-001.
- PACKAGED PER MOLEX PACKAGING SPEC. PK-45711-000.

PRODUCTION EC NO: UCP2006-2419 DRAWN BY: B KOSTIC CHECKED BY: B KOSTIC APPR: JPALEL DATE: 2006/04/17 DATE: 2006/05/01	QUALITY SYMBOLS ▽=0 ▽=0	GENERAL TOLERANCES (UNLESS SPECIFIED)		DIMENSION STYLE IN/MM		SCALE 2:1	DESIGN UNITS INCH	THIRD ANGLE PROJECTION
		4 PLACES ± --- ± --- 3 PLACES ± --- ± --- 2 PLACES ± 0.25 ± .010 1 PLACE ± 0.25 ± --- ANGULAR ± 1 °	mm INCH	DRAWN BY SBB DATE 11/19/04	CHECKED BY B KOSTIC DATE 03/17/06	TITLE BUS BAR CONN ASSY VERTICAL MOUNT		
DRAFT WHERE APPLICABLE MUST REMAIN WITHIN DIMENSIONS		MATERIAL NO. 45711-1000		DOCUMENT NO. SD-45711-100		SHEET NO. 1 OF 1		MOLEX MOLEX INCORPORATED
THIS DRAWING CONTAINS INFORMATION THAT IS PROPRIETARY TO MOLEX INCORPORATED AND SHOULD NOT BE USED WITHOUT WRITTEN PERMISSION								