



Chipsmall Limited consists of a professional team with an average of over 10 year of expertise in the distribution of electronic components. Based in Hongkong, we have already established firm and mutual-benefit business relationships with customers from,Europe,America and south Asia,supplying obsolete and hard-to-find components to meet their specific needs.

With the principle of “Quality Parts,Customers Priority,Honest Operation,and Considerate Service”,our business mainly focus on the distribution of electronic components. Line cards we deal with include Microchip,ALPS,ROHM,Xilinx,Pulse,ON,Everlight and Freescale. Main products comprise IC,Modules,Potentiometer,IC Socket,Relay,Connector.Our parts cover such applications as commercial,industrial, and automotives areas.

We are looking forward to setting up business relationship with you and hope to provide you with the best service and solution. Let us make a better world for our industry!



Contact us

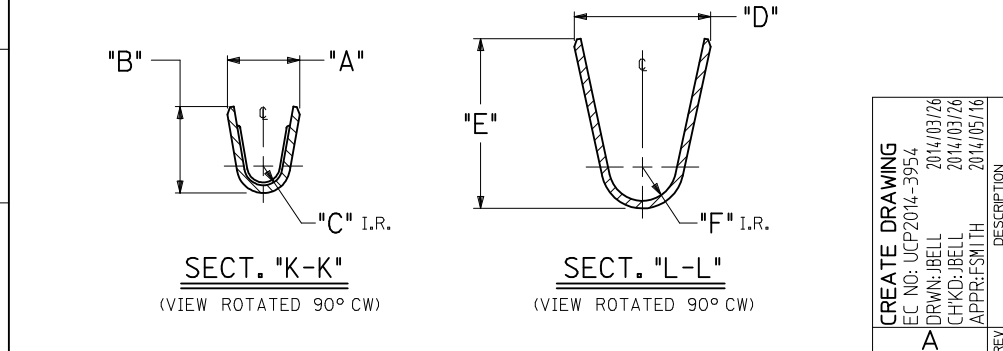
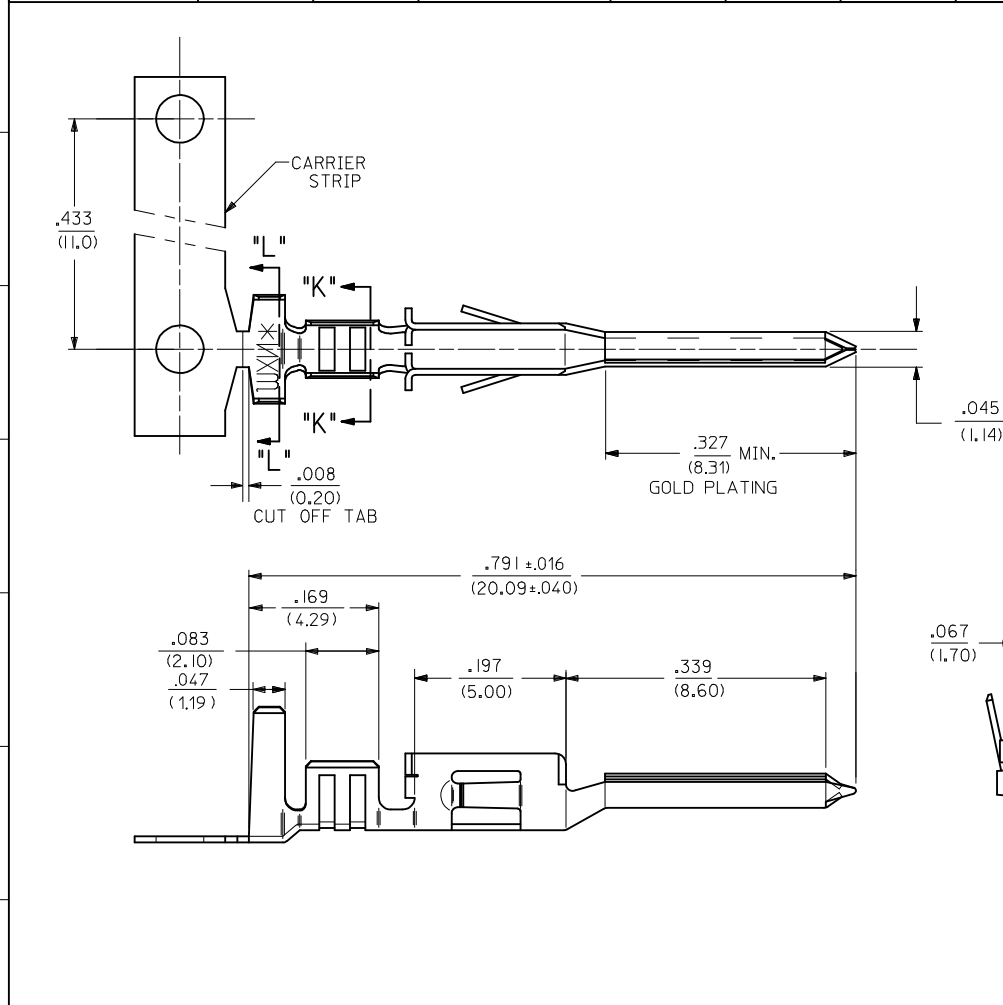
Tel: +86-755-8981 8866 Fax: +86-755-8427 6832

Email & Skype: info@chipsmall.com Web: www.chipsmall.com

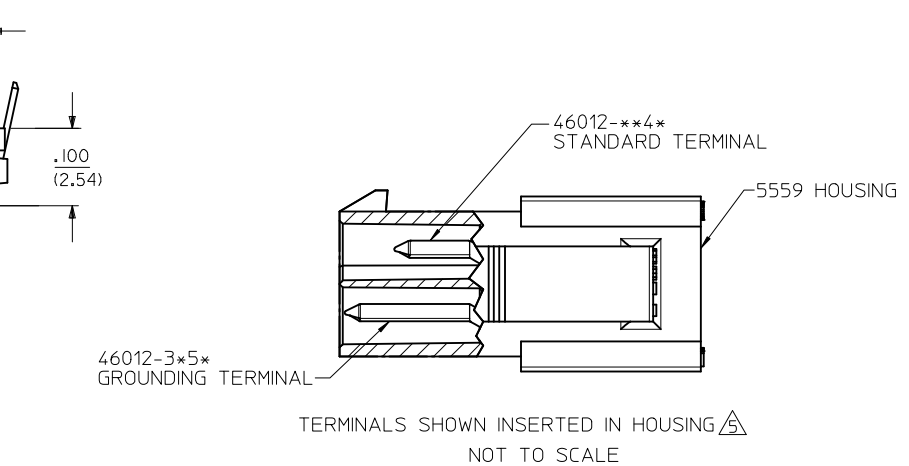
Address: A1208, Overseas Decoration Building, #122 Zhenhua RD., Futian, Shenzhen, China



ITEM NO.	FORM	WIRE GAGE	RANGE OF INSULATION DIA.	DIM. "A"	DIM. "B"	DIM. "C"	DIM. "D"	DIM. "E"	DIM. "F"	FINISH (SEE NOTE 2)	LEGEND:
46012-3151	CHAIN	16 GA.	.122 (3.10) MAX.	.091±.012 (2.30±.30)	.106±.016 (2.70±.40)	.024 (.60)	.142±.012 (3.60±.30)	.177±.016 (4.50±.40)	.035 (.90)	FINISH 1 - BRIGHT	<div>46012 - * * 5 *</div> <div>BASE NO. _____</div> <div>WIRE GAGE _____</div> <div>3= 16</div> <div>PLATING _____</div> <div>1= TIN</div> <div>2= GOLD</div> <div>CHAIN OR LOOSE _____</div> <div>1= CHAIN</div> <div>2= LOOSE</div>
46012-3152	LOOSE									TIN OVER NICKEL	
46012-3251	CHAIN									FINISH 2 - SEL. GOLD	
46012-3252	LOOSE	16 GA.	.122 (3.10) MAX.	.091±.012 (2.30±.30)	.106±.016 (2.70±.40)	.024 (.60)	.142±.012 (3.60±.30)	.177±.016 (4.50±.40)	.035 (.90)	AND SEL. TIN OVER NICKEL	



- NOTES:
- MATERIAL:
COPPER ALLOY
 - FINISH:
1= .000100/(0.00254) MIN. BRIGHT TIN OVER .000050/(0.00127) MIN NICKEL OVERALL.
2= .000030/(0.00076) MIN SELECT GOLD IN CONTACT AREA AND .000100/(0.00254) MIN SELECT MATTE TIN IN CRIMP AREA OVER .000050/(0.00127) MIN NICKEL OVERALL.
GOLD PLATING RECOMMENDED FOR APPLICATIONS WHERE FRETTING CORROSION IS A CONCERN.
 - PRODUCT SPECIFICATION: PS-45750-001
 - PACKAGING SPECIFICATION: PK-46012-002 FOR CHAIN TERMINALS
PK-5556-003 FOR LOOSE TERMINALS.
 - TERMINAL MATES WITH FEMALE TERMINAL SERIES 45750 AND CAN BE USED WITH MOLEX PLUG HOUSINGS 5559 AND 30068. TIP OF TERMINAL EXTENDS CLOSER TO HOUSING MATING FACE. SEE VIEW BELOW FOR TERMINAL POSITIONS. THIS TERMINAL CANNOT BE USED WITH 42475 OR 43588 HOUSINGS
 - THIS TERMINAL IS DESIGNED FOR SINGLE WIRE CRIMPING.
 - WHEN TERMINALS ARE INSTALLED IN THE HOUSINGS, THE WIRES ARE TO BE DRESSED IN SUCH A MANNER TO ALLOW THE TERMINALS TO FLOAT FREELY IN THE POCKETS.



<div>CREATE DRAWING</div> <div>EC NO: UCP2014-3954</div> <div>DRWN:JBELL 2014/03/26</div> <div>CHKD:JBELL 2014/03/26</div> <div>APPR:FSMITH 2014/05/16</div> <div>A</div>	<div>DESCRIPTION</div> <div>REV</div>	<div>QUALITY SYMBOLS</div> <div>▽=0</div> <div>▽=1</div> <div>▽=0</div>	GENERAL TOLERANCES (UNLESS SPECIFIED)		DIMENSION STYLE		SCALE	DESIGN UNITS	<div>THIRD ANGLE PROJECTION</div>	<div>MALE CRIMP GROUNDING TERMINAL, MINI-FIT PLUS HCS SERIES</div> <div>molex</div>	
					IN/MM		4:1	METRIC			
				mm	INCH	DRAWN BY	DATE	TITLE			
			4 PLACES	± ---	± ---	JBELL	2014/03/26				
			3 PLACES	± ---	± .010	CHECKED BY	DATE				
			2 PLACES	± 0.25	± .015	JBELL	2014/03/26				
			1 PLACE	± 0.38	± ---	APPROVED BY	DATE				
			0 PLACE	±		FSMITH	2014/05/16				
			ANGULAR ±1/2°		MATERIAL NO.		DOCUMENT NO.				SHEET NO.
			DRAFT WHERE APPLICABLE MUST REMAIN WITHIN DIMENSIONS		SEE CHART		SD-46012-002				1 OF 1
		SIZE	THIS DRAWING CONTAINS INFORMATION THAT IS PROPRIETARY TO MOLEX INCORPORATED AND SHOULD NOT BE USED WITHOUT WRITTEN PERMISSION								