



Chipsmall Limited consists of a professional team with an average of over 10 year of expertise in the distribution of electronic components. Based in Hongkong, we have already established firm and mutual-benefit business relationships with customers from,Europe,America and south Asia,supplying obsolete and hard-to-find components to meet their specific needs.

With the principle of "Quality Parts,Customers Priority,Honest Operation,and Considerate Service",our business mainly focus on the distribution of electronic components. Line cards we deal with include Microchip,ALPS,ROHM,Xilinx,Pulse,ON,Everlight and Freescale. Main products comprise IC,Modules,Potentiometer,IC Socket,Relay,Connector.Our parts cover such applications as commercial,industrial, and automotives areas.

We are looking forward to setting up business relationship with you and hope to provide you with the best service and solution. Let us make a better world for our industry!



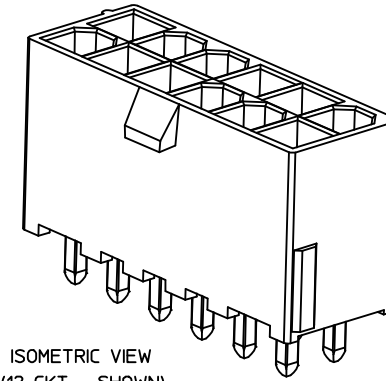
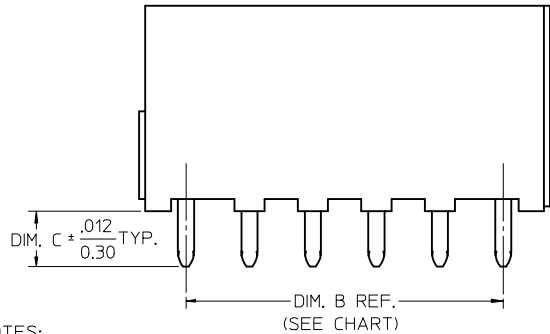
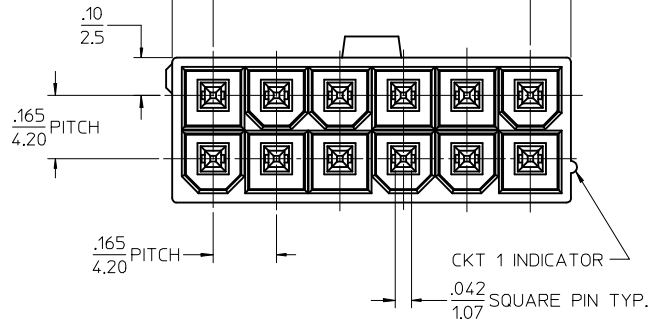
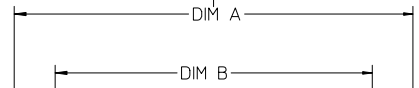
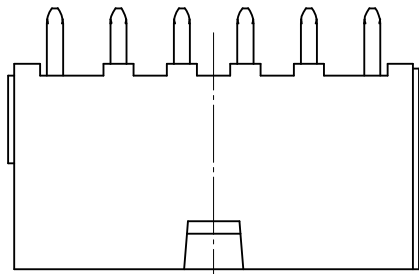
## Contact us

Tel: +86-755-8981 8866 Fax: +86-755-8427 6832

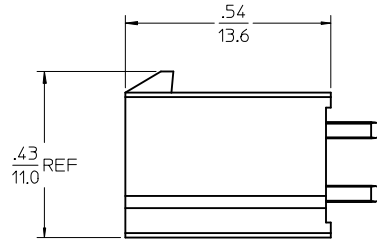
Email & Skype: info@chipsmall.com Web: www.chipsmall.com

Address: A1208, Overseas Decoration Building, #122 Zhenhua RD., Futian, Shenzhen, China

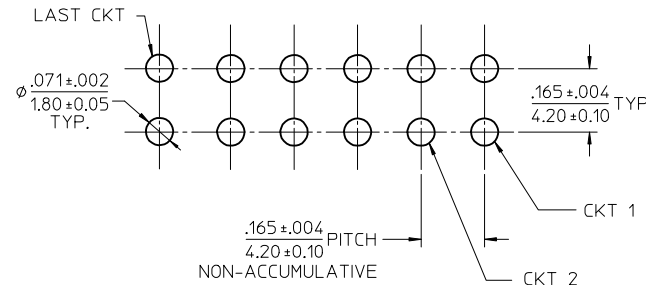




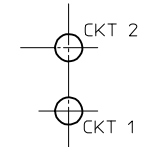
ISOMETRIC VIEW  
(12 CKT - SHOWN)



CKT SIZE	DIM. A	DIM. B
02	0.21/5.4	NA
04	0.38/9.6	0.165/4.20
06	0.54/13.8	0.331/8.40
08	0.71/18.0	0.496/12.60
10	0.87/22.2	0.661/16.80
12	1.04/26.4	0.827/21.00
14	1.21/30.6	0.992/25.20
16	1.37/34.8	1.160/29.40
18	1.54/39.0	1.323/33.60
20	1.70/43.2	1.488/37.80
22	1.87/47.4	1.654/42.00
24	2.03/51.6	1.819/46.20



LAYOUT FOR  
4-24 CIRCUITS



LAYOUT FOR  
2 CIRCUIT

RECOMMENDED PCB HOLE LAYOUT COMPONENT SIDE

NOTES:

- MATERIALS:  
HOUSING - GLASS FILLED LCP UL94V-0, COLOR: SEE CHART  
TERMINAL - BRASS
- TERMINAL PLATING:  
TIN= .000100/0.00254 MIN. MATTE TIN OVER  
.000050/0.00127 MIN. NICKEL  
GOLD=.000030/0.00076 MIN. SELECT GOLD OVER  
.000100/0.00254 MIN. SELECT MATTE TIN  
OVER .000050/0.00127 MIN. NICKEL OVERALL.
- PRODUCT SPECIFICATION: PS-46207-001
- PACKAGING SPECIFICATION: TRAY PACK PER: PK-46207-001 UNLESS NOTED.  
TAPE AND REEL PACK PER: PK-46207-002
- PART CONFORMS TO CLASS "B" REQUIREMENTS OF COSMETIC SPECIFICATION PS-45499-002.
- PARTS ARE NOT DESIGNED FOR CURRENT SHARING.
- CONNECTORS ARE NOT TO BE MATED AND UNMATED WHILE CIRCUITS ARE LIVE.

RELEASE 46207-4006 IEC NO: UCP2015-2143 DRWN: DFOX 2014/11/20 CHKD: JBELL 2014/11/20 APPR: FSMITH 2015/03/26	QUALITY SYMBOLS 	GENERAL TOLERANCES (UNLESS SPECIFIED)		DIMENSION STYLE IN/MM		SCALE 4:1	DESIGN UNITS METRIC	THIRD ANGLE PROJECTION																				
		<table border="1"> <thead> <tr> <th></th> <th>mm</th> <th>INCH</th> </tr> </thead> <tbody> <tr> <td>4 PLACES</td> <td>± ---</td> <td>± ---</td> </tr> <tr> <td>3 PLACES</td> <td>± ---</td> <td>± .005</td> </tr> <tr> <td>2 PLACES</td> <td>± 0.13</td> <td>± .010</td> </tr> <tr> <td>1 PLACE</td> <td>± 0.25</td> <td>± ---</td> </tr> <tr> <td>0 PLACE</td> <td>± ---</td> <td>± ---</td> </tr> </tbody> </table>			mm	INCH	4 PLACES	± ---	± ---	3 PLACES	± ---	± .005	2 PLACES	± 0.13	± .010	1 PLACE	± 0.25	± ---	0 PLACE	± ---	± ---	DRAWN BY LSCHMIDT		DATE 2007/12/14	MINI-FIT RTC HI-TEMP VERTICAL HEADER IN LCP, W/O PCB PEGS <b>molex</b> DOCUMENT NO. SD-46207-002 SHEET NO. 1 OF 3			
			mm	INCH																								
		4 PLACES	± ---	± ---																								
3 PLACES	± ---	± .005																										
2 PLACES	± 0.13	± .010																										
1 PLACE	± 0.25	± ---																										
0 PLACE	± ---	± ---																										
DRAFT WHERE APPLICABLE MUST REMAIN WITHIN DIMENSIONS		CHECKED BY JBELL		DATE 2007/12/17																								
ANGULAR ±1/2° SIZE C		APPROVED BY FSMI THROEMER		DATE 2007/12/18																								
THIS DRAWING CONTAINS INFORMATION THAT IS PROPRIETARY TO MOLEX INCORPORATED AND SHOULD NOT BE USED WITHOUT WRITTEN PERMISSION																												

GOLD PLATING		COLOR=BLACK			
CKT SIZE	TAPE & REEL MATERIAL NUMBER	TRAY PACK MATERIAL NUMBER	DIM. C	PCB THK.	
02	462078002	* 462076002	* 0.144/3.66	0.062	
04	462078004	* 462076004	* 0.144/3.66	0.062	
06	462078006	* 462076006	* 0.144/3.66	0.062	
08	462078008	* 462076008	* 0.144/3.66	0.062	
10	462078010	* 462076010	* 0.144/3.66	0.062	
12	462078012	* 462076012	* 0.144/3.66	0.062	
14	462078014	* 462076014	* 0.144/3.66	0.062	
16	462078016	* 462076016	* 0.144/3.66	0.062	
18	462078018	* 462076018	* 0.144/3.66	0.062	
20	462078020	* 462076020	* 0.144/3.66	0.062	
22	462078022	* 462076022	* 0.144/3.66	0.062	
24	462078024	* 462076024	* 0.144/3.66	0.062	
02					
04					
06					
08					
10					
12					
14					
16					
18					
20					
22					
24					

TIN PLATING		COLOR=BLACK			
CKT SIZE	TAPE & REEL MATERIAL NUMBER	TRAY PACK MATERIAL NUMBER	DIM. C	PCB THK.	
02	462074002	* 462071002	* 0.144/3.66	0.062	
04	462074004	* 462071004	* 0.144/3.66	0.062	
06	462074006	* 462071006	* 0.144/3.66	0.062	
08	462074008	* 462071008	* 0.144/3.66	0.062	
10	462074010	* 462071010	* 0.144/3.66	0.062	
12	462074012	* 462071012	* 0.144/3.66	0.062	
14	462074014	* 462071014	* 0.144/3.66	0.062	
16	462074016	* 462071016	* 0.144/3.66	0.062	
18	462074018	* 462071018	* 0.144/3.66	0.062	
20	462074020	* 462071020	* 0.144/3.66	0.062	
22	462074022	* 462071022	* 0.144/3.66	0.062	
24	462074024	* 462071024	* 0.144/3.66	0.062	
02		462071102	* 0.176/4.46	0.093	
04		462071104	0.176/4.46	0.093	
06		462071106	0.176/4.46	0.093	
08		462071108	0.176/4.46	0.093	
10		462071110	0.176/4.46	0.093	
12		462071112	0.176/4.46	0.093	
14		462071114	* 0.176/4.46	0.093	
16		462071116	* 0.176/4.46	0.093	
18		462071118	* 0.176/4.46	0.093	
20		462071120	* 0.176/4.46	0.093	
22		462071122	* 0.176/4.46	0.093	
24		462071124	0.176/4.46	0.093	
02		462071202	* 0.207/5.26	0.125	
04		462071204	0.207/5.26	0.125	
06		462071206	0.207/5.26	0.125	
08		462071208	0.207/5.26	0.125	
10		462071210	0.207/5.26	0.125	
12		462071212	0.207/5.26	0.125	
14		462071214	* 0.207/5.26	0.125	
16		462071216	* 0.207/5.26	0.125	
18		462071218	* 0.207/5.26	0.125	
20		462071220	* 0.207/5.26	0.125	
22		462071222	* 0.207/5.26	0.125	
24		462071224	0.207/5.26	0.125	

02		462076602	* .278/7.06	0.250	
04		462076604	* .278/7.06	0.250	
06		462076606	* .278/7.06	0.250	
08		462076608	* .278/7.06	0.250	
10		462076610	* .278/7.06	0.250	
12		462076612	* .278/7.06	0.250	
14		462076614	* .278/7.06	0.250	
16		462076616	* .278/7.06	0.250	
18		462076618	* .278/7.06	0.250	
20		462076620	* .278/7.06	0.250	
22		462076622	* .278/7.06	0.250	
24		462076624	* .278/7.06	0.250	

TRAY PACKAGED PER PK-5569-003

\* DESIGNATES PART NOT RELEASED. CONTACT FACTORY FOR AVAILABILITY.

\* DESIGNATES PART NOT RELEASED. CONTACT FACTORY FOR AVAILABILITY.

SEE SHEET 1 EC NO: UCP2015-2143 DRWN: JDFOX 2014/11/20 CHKD: JBELL 2014/11/20 APPR: FSMITH 2015/03/26	QUALITY SYMBOLS	GENERAL TOLERANCES (UNLESS SPECIFIED)	DIMENSION STYLE	SCALE	DESIGN UNITS	THIRD ANGLE PROJECTION
	▽=0	mm INCH	IN/MM	1:1	METRIC	
	▽=0	4 PLACES ± --- ± ---	DRAWN BY DATE	TITLE		
	▽=0	3 PLACES ± --- ±.005	LSCHMIDT 2007/12/14	MINI-FIT RTC HI-TEMP VERTICAL HEADER IN LCP, W/O PCB PEGS		
	2 PLACES ±0.13 ±.010	CHECKED BY DATE	molex			
	1 PLACE ±0.25 ± ---	JBELL 2007/12/17	SD-46207-002			
	0 PLACE ± --- ± ---	APPROVED BY DATE	2 OF 3			
		FSMI THROEMER 2007/12/18	SHEET NO.			
		MATERIAL NO.	SD-46207-002			
		ANGULAR ±1/2°	THIS DRAWING CONTAINS INFORMATION THAT IS PROPRIETARY TO MOLEX INCORPORATED AND SHOULD NOT BE USED WITHOUT WRITTEN PERMISSION			
		DRAFT WHERE APPLICABLE MUST REMAIN WITHIN DIMENSIONS				

