



Chipsmall Limited consists of a professional team with an average of over 10 year of expertise in the distribution of electronic components. Based in Hongkong, we have already established firm and mutual-benefit business relationships with customers from,Europe,America and south Asia,supplying obsolete and hard-to-find components to meet their specific needs.

With the principle of “Quality Parts,Customers Priority,Honest Operation,and Considerate Service”,our business mainly focus on the distribution of electronic components. Line cards we deal with include Microchip,ALPS,ROHM,Xilinx,Pulse,ON,Everlight and Freescale. Main products comprise IC,Modules,Potentiometer,IC Socket,Relay,Connector.Our parts cover such applications as commercial,industrial, and automotives areas.

We are looking forward to setting up business relationship with you and hope to provide you with the best service and solution. Let us make a better world for our industry!



Contact us

Tel: +86-755-8981 8866 Fax: +86-755-8427 6832

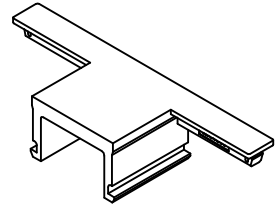
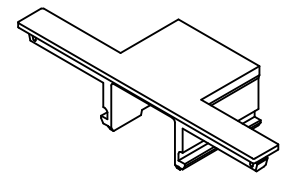
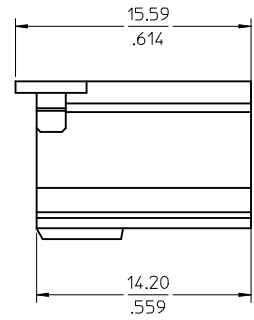
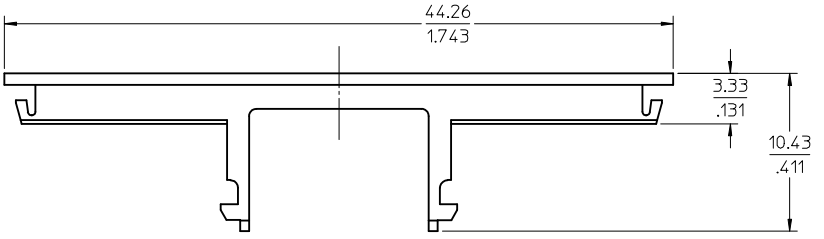
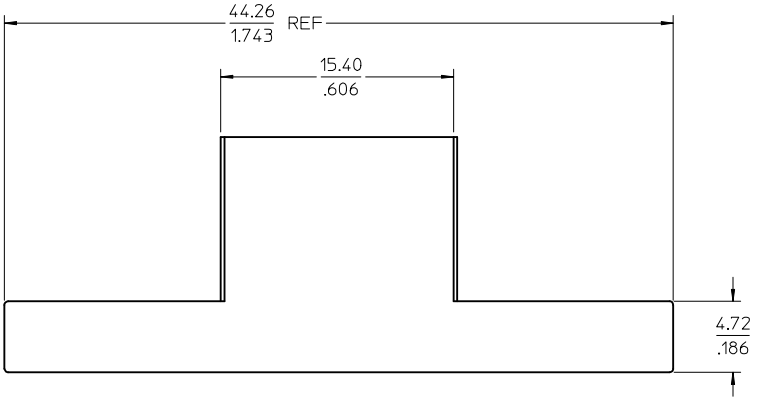
Email & Skype: info@chipsmall.com Web: www.chipsmall.com

Address: A1208, Overseas Decoration Building, #122 Zhenhua RD., Futian, Shenzhen, China



NOTES:

1. MATERIAL: PA6 NYLON UNFILLED 89992-1195 - COLOR BLACK
2. PART FOR USE WITH HOUSING 46707-0001
3. PART IS ROHS COMPLIANT
4. PACKAGED PER MOLEX PACKAGING SPEC PK-46708-001



RVD TO MODEL EC NO: UCP2009-2016 DRWN: JSCHAFFER 2009/02/26 CHKD: 2009/02/26 APPR: APATEL 2009/03/10	QUALITY SYMBOLS	GENERAL TOLERANCES (UNLESS SPECIFIED)		DIMENSION STYLE	SCALE	DESIGN UNITS	THIRD ANGLE PROJECTION	
	▽=0	mm	INCH	MM/IN	4:1	METRIC	TITLE	
	▽=0	4 PLACES ± --- ± ---	3 PLACES ± --- ± .008	DRAWN BY DATE	TPA FOR HSG RECEPTACLE TEN50 WIRE HALOGEN FREE			
	▽=0	2 PLACES ± 0.20 ± .013	1 PLACE ± 0.33 ± ---	JSCHAFFER 2009/02/12				
1	DESCRIPTION	ANGULAR ± 1/2°		CHECKED BY DATE	MOLEX INCORPORATED DOCUMENT NO. SD-46708-001 SHEET NO. 1 OF 1			
1	DRAFT WHERE APPLICABLE MUST REMAIN WITHIN DIMENSIONS	APPROVED BY DATE						
		MATERIAL NO. 46708-0001		APATEL 2009/02/16				
		SIZE		THIS DRAWING CONTAINS INFORMATION THAT IS PROPRIETARY TO MOLEX INCORPORATED AND SHOULD NOT BE USED WITHOUT WRITTEN PERMISSION				