



Chipsmall Limited consists of a professional team with an average of over 10 year of expertise in the distribution of electronic components. Based in Hongkong, we have already established firm and mutual-benefit business relationships with customers from,Europe,America and south Asia,supplying obsolete and hard-to-find components to meet their specific needs.

With the principle of "Quality Parts,Customers Priority,Honest Operation,and Considerate Service",our business mainly focus on the distribution of electronic components. Line cards we deal with include Microchip,ALPS,ROHM,Xilinx,Pulse,ON,Everlight and Freescale. Main products comprise IC,Modules,Potentiometer,IC Socket,Relay,Connector.Our parts cover such applications as commercial,industrial, and automotives areas.

We are looking forward to setting up business relationship with you and hope to provide you with the best service and solution. Let us make a better world for our industry!



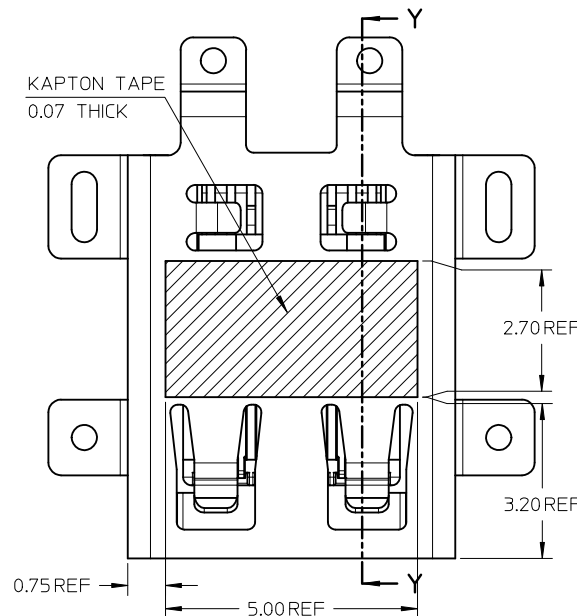
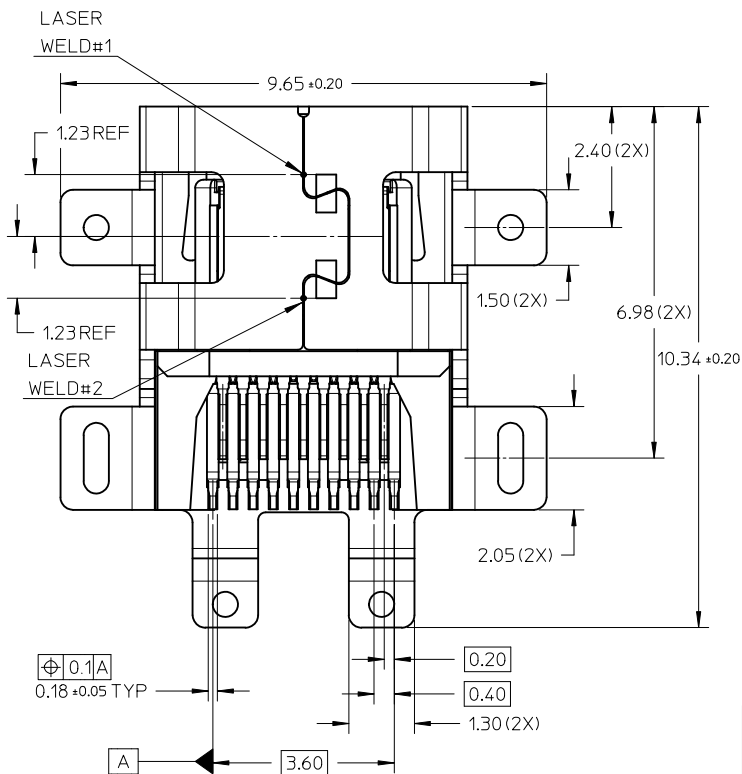
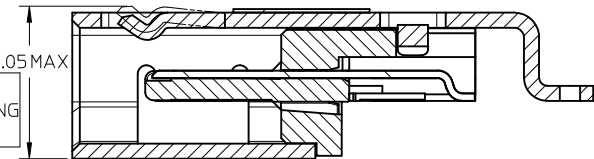
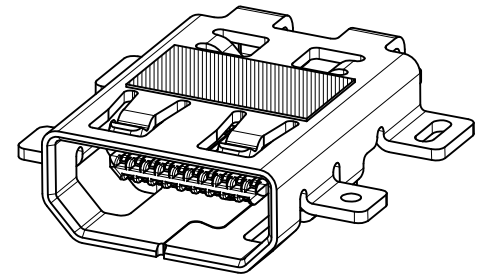
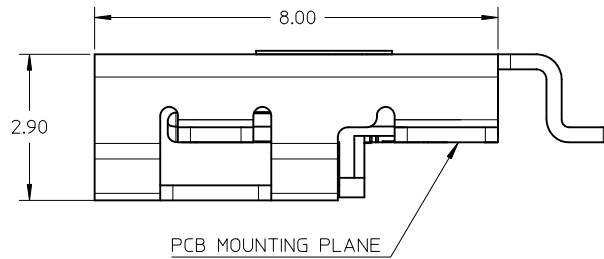
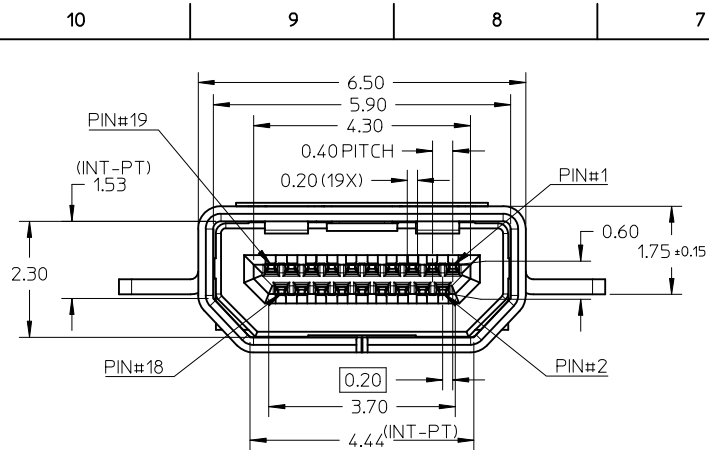
Contact us

Tel: +86-755-8981 8866 Fax: +86-755-8427 6832

Email & Skype: info@chipsmall.com Web: www.chipsmall.com

Address: A1208, Overseas Decoration Building, #122 Zhenhua RD., Futian, Shenzhen, China





NOTES:

1. MATERIALS:

- HOUSING: LCP, 30% GLASS FILLED, UL94V-0
- TERMINALS: COPPER ALLOY
- SHIELD: STAINLESS STEEL

2. FINISHES:

- TERMINALS: GOLD ON CONTACT AREA (Refer Table), 0.05UM MIN GOLD FLASH ON SOLDER TAILS, AND 2.0UM MIN NICKEL UNDERPLATE OVERALL
- SHIELD: MATTE TIN (Refer Table) OVER 1.27UM MIN NICKEL

3. PRODUCT SPECIFICATION: PS-46765-001

4. PACKAGING SPECIFICATION: PACKED IN TAPE & REEL

5. SEE SHEET 4 OF 5 FOR RECOMMENDED PCB LAYOUT

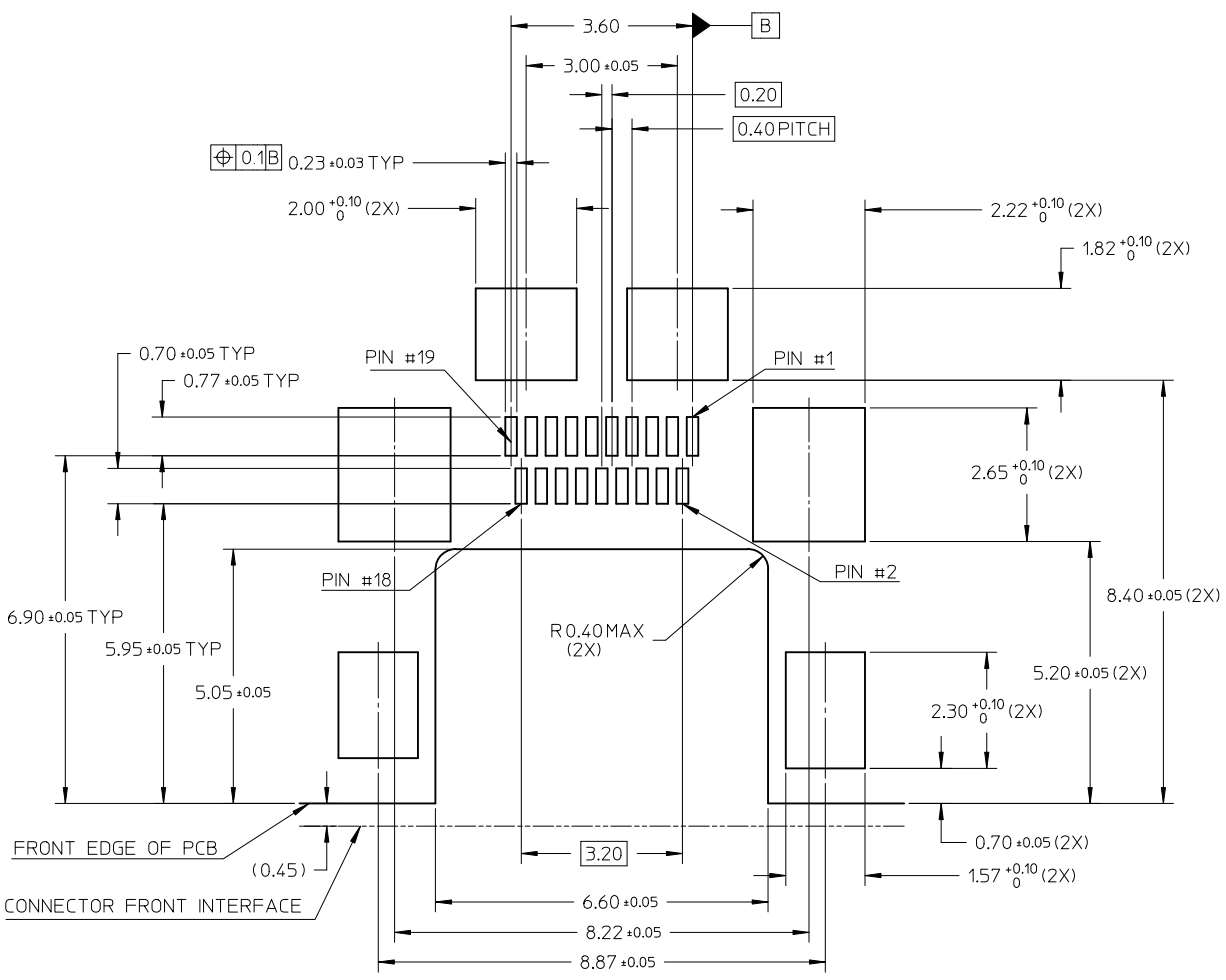
6. TERMINAL SOLDER-TAIL COPLANARITY 0.08 MAX

	Contact: 0.76µM Gold Min Shield: 3.8µM Tin Min	Contact: 0.38µM Gold Min Shield: 2.0µM Tin Min
MOUNTING TYPE	PART NUMBER	PART NUMBER
ASSEMBLY+KAPTON TAPE	46875-3001	46875-3301
ASSEMBLY	46875-3011	46875-3311

REVISED EC NO: S2011-0822 DRWN: KSSHANTHA 2011/03/29 CHKD: JESSIECHUA 2011/03/30 APPR: NAGESHKN 2011/03/30	QUALITY SYMBOLS	GENERAL TOLERANCES (UNLESS SPECIFIED)	DIMENSION STYLE	SCALE	DESIGN UNITS	THIRD ANGLE PROJECTION
	$\nabla_A = 0$ $\nabla_B = 0$ $\nabla_C = 0$	mm INCH 4 PLACES ± --- ± --- 3 PLACES ± --- ± --- 2 PLACES ± 0.10 ± --- 1 PLACE ± --- ± --- ANGULAR ± 1°	MM ONLY	NTS	METRIC	
	DRAFT WHERE APPLICABLE MUST REMAIN WITHIN DIMENSIONS	DRAWN BY: KSSHANTHA CHECKED BY: JESSIECHUA APPROVED BY: NAGESHKN MATERIAL NO.	DATE: 2010/03/29 DATE: 2010/03/29 DATE: 2010/04/07	TITLE		
	SEE TABLE	THIS DRAWING CONTAINS INFORMATION THAT IS PROPRIETARY TO MOLEX INCORPORATED AND SHOULD NOT BE USED WITHOUT WRITTEN PERMISSION	RECEPTACLE, MIDMOUNT, 6-LEG SMT 0.4MM PITCH, MICRO HDMI MOLEX INCORPORATED	DOCUMENT NO. SD-46875-701	SHEET NO. 1 OF 2	

PIN	SIGNAL ASSIGNMENT
1	Hot Plug Detect
2	Utility
3	TMDS Data2+
4	TMDS Data2 Shield
5	TMDS Data2-
6	TMDS Data1+
7	TMDS Data1 Shield
8	TMDS Data1-
9	TMDS Data0+
10	TMDS Data0 Shield
11	TMDS Data0-
12	TMDS Clock+
13	TMDS Clock Shield
14	TMDS Clock-
15	CEC
16	DDC/CEC Ground
17	SCL
18	SDA
19	+5V Power

CONNECTION	SIGNALS
FIRST MAKE	CONNECTOR SHELL
SECOND MAKE	PINS 1 - 18
THIRD MAKE	PIN 19 (+5V POWER)



REVISED EC NO: S2011-0822 DRWN: KSSHANTHA 2011/03/29 CHKD: JESSIECHUA 2011/03/30 APPR: NAGESHKN 2011/03/30	DESCRIPTION QUALITY SYMBOLS $F_A=0$ $F_G=0$ $F_P=0$	GENERAL TOLERANCES (UNLESS SPECIFIED)		DIMENSION STYLE MM ONLY		SCALE NTS	DESIGN UNITS METRIC	THIRD ANGLE PROJECTION			
		4 PLACES ± --- ± ---	mm INCH	DRAWN BY KSSHANTHA	DATE 2010/03/29	TITLE RECEPTACLE, MIDMOUNT, 6-LEG SMT 0.4MM PITCH, MICRO HDMI					
		3 PLACES ± --- ± ---		CHECKED BY JESSIECHUA	DATE 2010/03/29	MOLEX INCORPORATED					
		2 PLACES ± 0.10 ± ---		APPROVED BY NAGESHKN	DATE 2010/04/07	MATERIAL NO. SEE TABLE	DOCUMENT NO. SD-46875-701	SHEET NO. 2 OF 2			
1 PLACE ± --- ± ---		ANGULAR ± 1 °		THIS DRAWING CONTAINS INFORMATION THAT IS PROPRIETARY TO MOLEX INCORPORATED AND SHOULD NOT BE USED WITHOUT WRITTEN PERMISSION							
DRAFT WHERE APPLICABLE MUST REMAIN WITHIN DIMENSIONS											