



Chipsmall Limited consists of a professional team with an average of over 10 year of expertise in the distribution of electronic components. Based in Hongkong, we have already established firm and mutual-benefit business relationships with customers from,Europe,America and south Asia,supplying obsolete and hard-to-find components to meet their specific needs.

With the principle of “Quality Parts,Customers Priority,Honest Operation,and Considerate Service”,our business mainly focus on the distribution of electronic components. Line cards we deal with include Microchip,ALPS,ROHM,Xilinx,Pulse,ON,Everlight and Freescale. Main products comprise IC,Modules,Potentiometer,IC Socket,Relay,Connector.Our parts cover such applications as commercial,industrial, and automotives areas.

We are looking forward to setting up business relationship with you and hope to provide you with the best service and solution. Let us make a better world for our industry!



Contact us

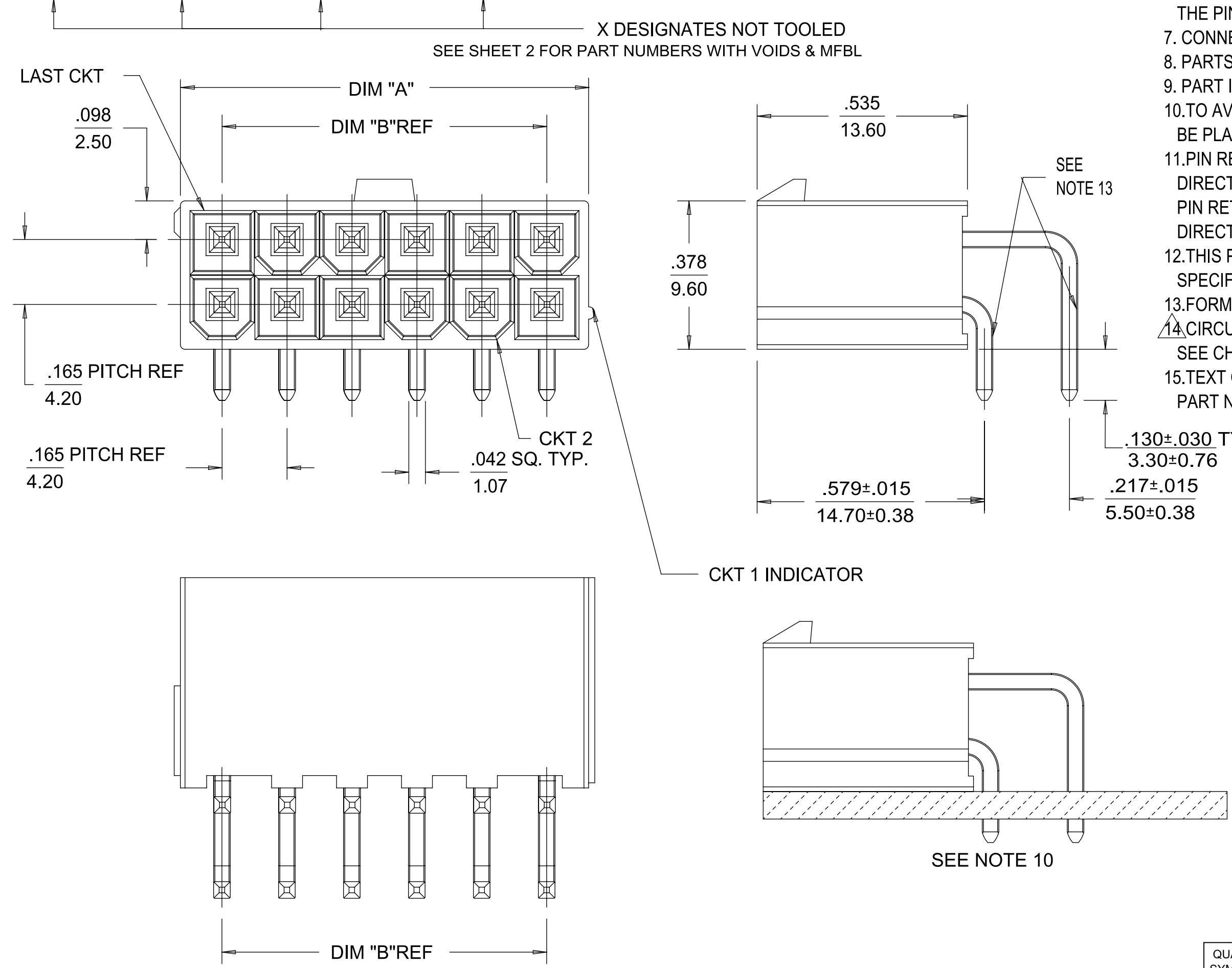
Tel: +86-755-8981 8866 Fax: +86-755-8427 6832

Email & Skype: info@chipsmall.com Web: www.chipsmall.com

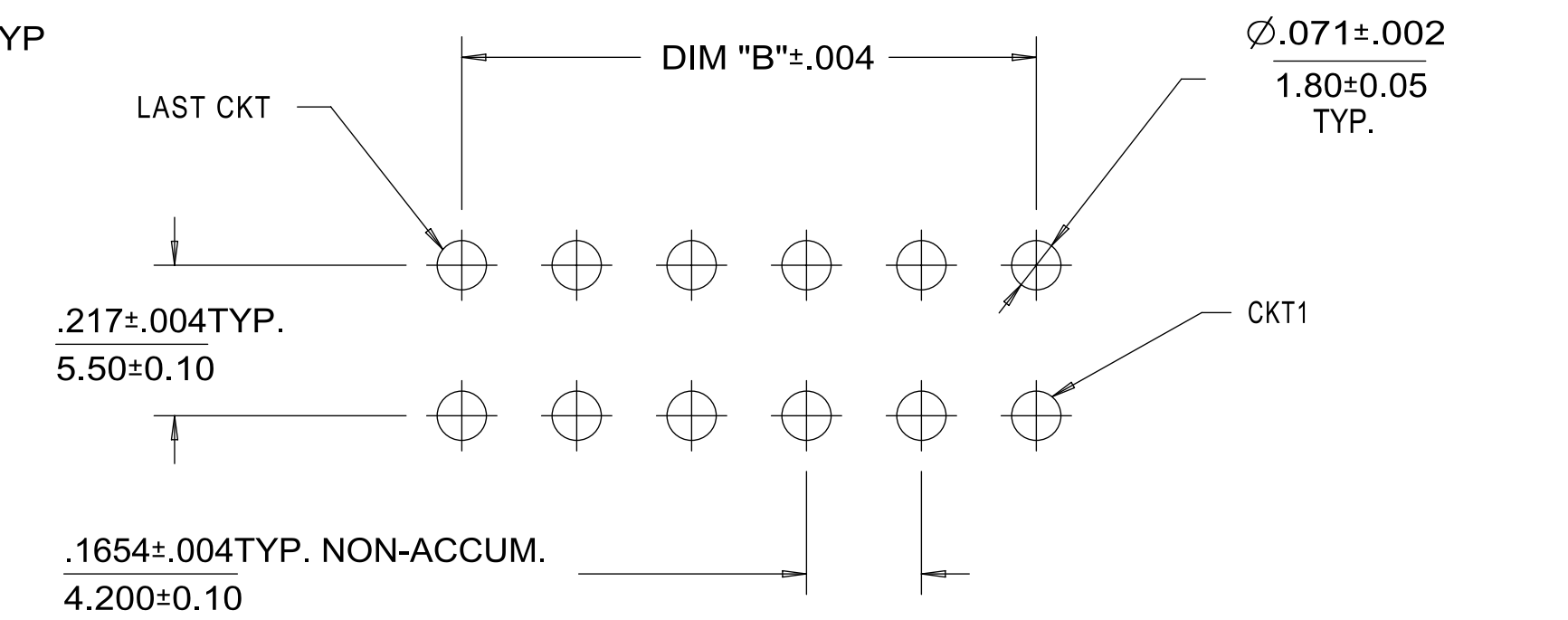
Address: A1208, Overseas Decoration Building, #122 Zhenhua RD., Futian, Shenzhen, China



	12	11	10	9	8						
	COLOR = BLACK				COLOR = NATURAL						
	TIN PLATING		GOLD PLATING		TIN PLATING						
CKT SIZE	TRAY PACK MATERIAL NUMBER	TAPE & REEL MATERIAL NUMBER	TRAY PACK MATERIAL NUMBER	TRAY PACK MATERIAL NUMBER			DIM "A"	DIM "B"			
4	46991-1004		46991-4004	X	46991-2004			.38/9.6	.165/4.20		
6	46991-1006	X	46991-4006	X	46991-2006			.54/13.8	.331/8.40		
8	46991-1008	X	46991-4008		46991-2008			.71/18.0	.496/12.60		
10	46991-1010		46991-4010	X	46991-2010	X	46991-1110	.87/22.2	.661/16.80		
12	46991-1012	X	46991-4012		46991-2012			1.04/26.4	.827/21.00		
14	X	46991-1014	X	46991-4014	X	46991-2014		1.21/30.6	.992/25.20		
16	X	46991-1016	X	46991-4016	X	46991-2016		1.37/34.8	1.160/29.40		
18	X	46991-1018	X	46991-4018	X	46991-2018		1.54/39.0	1.323/33.60		
20	X	46991-1020	X	46991-4020	X	46991-2020		1.70/43.2	1.488/37.80		
22	X	46991-1022	X	46991-4022	X	46991-2022		1.87/47.4	1.654/42.00		
24		46991-1024	X	46991-4024	X	46991-2024		2.03/51.6	1.819/46.20		



- NOTES:
- MATERIAL:
HOUSING - LIQUID CRYSTAL POLYMER (LCP), COLOR: SEE CHART.
TERMINAL - BRASS
 - TERMINAL PLATING: TIN = .000100/0.00254 MATTE TIN OVER
.000050/0.00127 NICKEL OVERALL
GOLD= .000030/0.00076 MIN. SELECT GOLD OVER
.000100/0.00254 MIN. SELECT MATTE TIN OVER
.000050/0.00127 MIN NICKEL OVERALL
 - PRODUCT SPECIFICATION: PS-46207-001.
 - PACKAGING SPECIFICATION: TRAY PACKED PER PK-5569-003 OR
TAPE AND REEL PACKAGED PER PK-46991-001.
 - PART MATES WITH MINIFIT JR RECEPTACLE SERIES 5557
 - DISCOLORIZATION IN THE BANDOLIER CARRIER AREA OF THE PIN IS
INHERENT TO THE PLATING PROCESS AND IS DUE TO THE MASKING EFFECT
OF THE CARRIER. THIS DISCOLORIZATION IS A NON-FUNCTIONAL AREA OF
THE PIN AND WILL NOT AFFECT THE PERFORMANCE OF THE HEADER ASSEMBLY.
 - CONNECTORS ARE NOT TO BE MATED OR UNMATED WHILE CIRCUITS ARE LIVE.
 - PARTS ARE NOT DESIGNED FOR CURRENT SHARING.
 - PART IS INTENDED FOR PIN IN PASTE REFLOW SOLDER ONLY.
 - TO AVOID INTERFERENCE BETWEEN THE RECEPTACLE AND PCB. HEADER MUST
BE PLACED AT THE EDGE OF PCB AS SHOWN.
 - PIN RETENTION IN HOUSING IS 2.2 LBS/1 KG MIN. BOTH
DIRECTIONS FOR TIN PLATING.
PIN RETENTION IN HOUSING IS 1.0 LBS/0.45 KG MIN. BOTH
DIRECTIONS FOR GOLD PLATING.
 - THIS PART CONFORMS TO CLASS B REQUIREMENTS OF COSMETIC
SPECIFICATION PS-45499-002.
 - FORMING MARKS ON PINS ARE ACCEPTABLE.
 - CIRCUITS SHOWN PROVIDE THE MATE-FIRST/BREAK-LAST FEATURE.
SEE CHART ON SHEET 2 FOR SPECIFIC CIRCUIT LOCATIONS.
 - TEXT ON PART IS FOR REFERENCE ONLY. TEXT AND TEXT LOCATION MAY VARY DEPENDING ON
PART NUMBER AND/OR TOOL.



RECOMMENDED PCB HOLE LAYOUT FOR .070/1.78 MAX THICK P.C. BOARD
VIEWED FROM COMPONENT SIDE

DIM "B" REF											
THIS DRAWING CONTAINS INFORMATION THAT IS PROPRIETARY TO MOLEX ELECTRONIC TECHNOLOGIES, LLC AND SHOULD NOT BE USED WITHOUT WRITTEN PERMISSION											
QUALITY SYMBOLS		ADD NATURAL P.N.S		EC NO: 106232		DRWN: CSLAFTER		CHK'D: CHKD:		APPR: FSMITH	
A = 0											
E = 0											
B = 0											
= 0											
C = 0											
X = 0											
= 0											
= 0											

[illegible]