



Chipsmall Limited consists of a professional team with an average of over 10 year of expertise in the distribution of electronic components. Based in Hongkong, we have already established firm and mutual-benefit business relationships with customers from,Europe,America and south Asia,supplying obsolete and hard-to-find components to meet their specific needs.

With the principle of “Quality Parts,Customers Priority,Honest Operation,and Considerate Service”,our business mainly focus on the distribution of electronic components. Line cards we deal with include Microchip,ALPS,ROHM,Xilinx,Pulse,ON,Everlight and Freescale. Main products comprise IC,Modules,Potentiometer,IC Socket,Relay,Connector.Our parts cover such applications as commercial,industrial, and automotives areas.

We are looking forward to setting up business relationship with you and hope to provide you with the best service and solution. Let us make a better world for our industry!



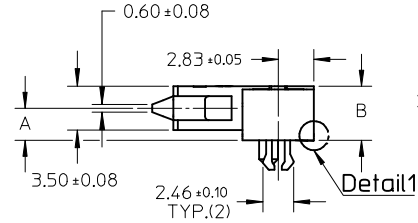
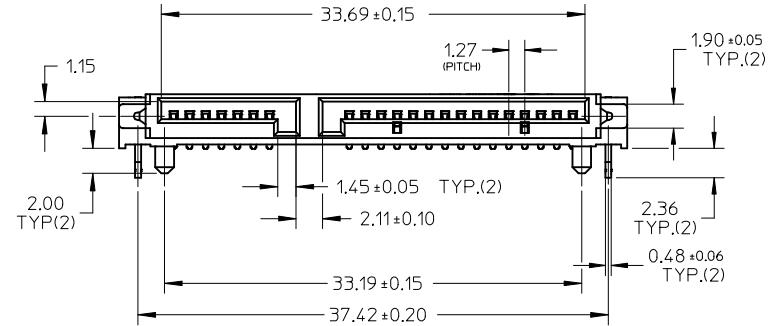
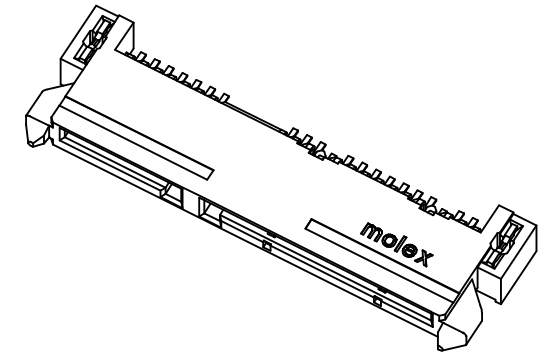
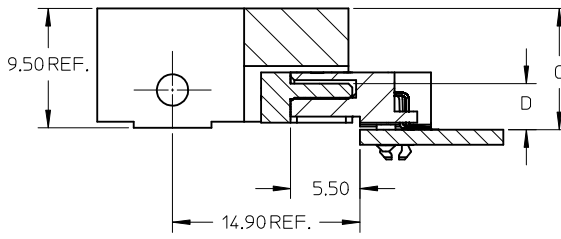
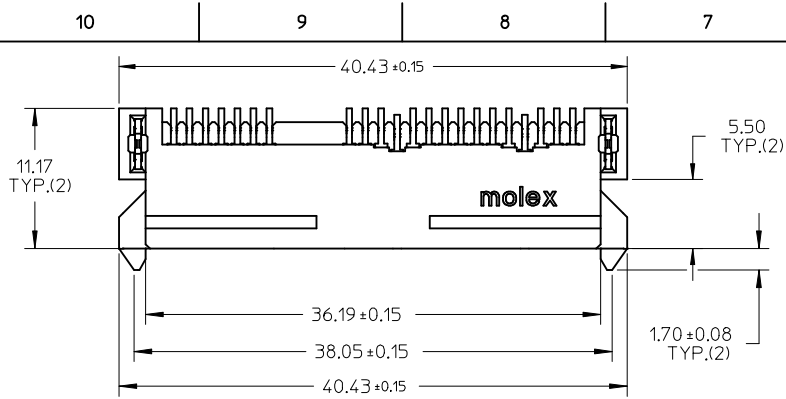
Contact us

Tel: +86-755-8981 8866 Fax: +86-755-8427 6832

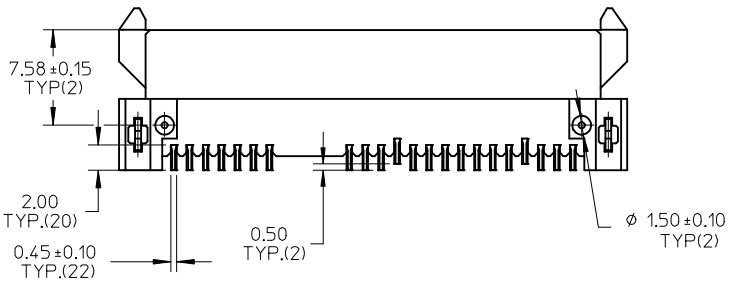
Email & Skype: info@chipsmall.com Web: www.chipsmall.com

Address: A1208, Overseas Decoration Building, #122 Zhenhua RD., Futian, Shenzhen, China





Detail1



NOTES:

1.MATERIAL:

HOUSING: LCP, GLASS FILLED, UL94V-0. COLOR: BLACK;
 FORKLOCK: COPPER ALLOY;
 TERMINALS: COPPER ALLOY.

2.TERMINAL PLATING:

CONTACT AREA:

- (a) GOLD FLASH(0.025 MICRONS MINIMUM);
 - (b) GOLD, THICKNESS=0.76 MICRONS MINIMUM;
 - (c) GOLD, THICKNESS=0.38 MICRONS MINIMUM;
- SOLDER AREA: TIN, THICKNESS=2.00 MICRONS MINIMUM;
 UNDER PLATE: NICKEL, THICKNESS=1.27 MICRONS MINIMUM.

3.FORLOCK PLATING:

SOLDER AREA: TIN, THICKNESS=2.00 MICRONS MINIMUM;
 UNDER PLATING: NICKEL, THICKNESS=1.27 MICRONS MINIMUM.

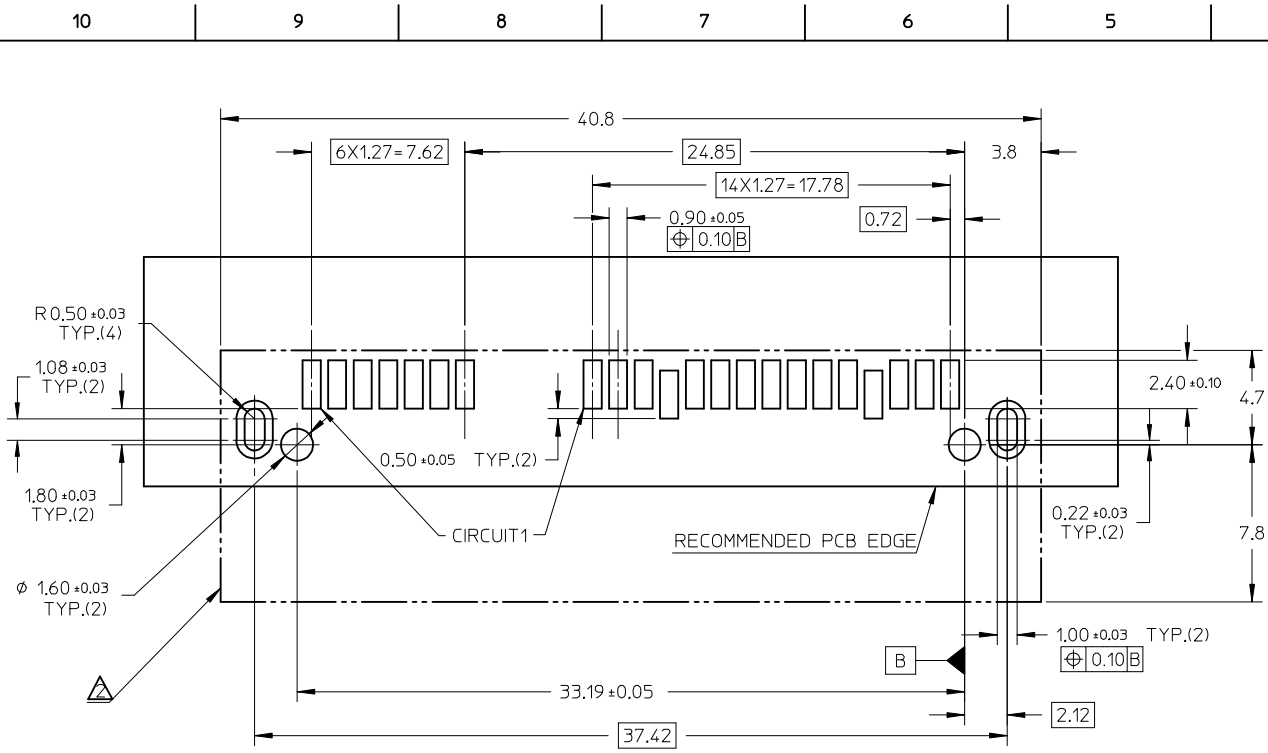
4.PRODUCT SPECIFICATION: PS-67492-001.

5.PACKAGING METHOD: 47018-400*, TAPE REEL, DETAIL REFER TO PK-47018-003,
 47018-210*, TAPE REEL, DETAIL REFER TO PK-47018-001;
 OTHERS, TRAY, DETAIL REFER TO PK-67492-001.

6.MATING PARTS: 87703/87672.

7.PRODUCT COMPLIANT TO RoSH DIRECTIVE 2002/95/EC AND 2000/53/EC.

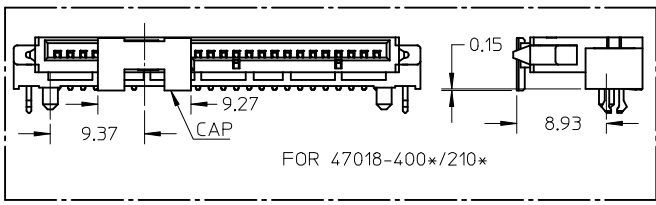
REVISED EC NO: SH2016-0027 DRWG:GLL1 CHKD: APPR:AYIN	2015/12/08 2016/01/18	DESCRIPTION REV	QUALITY SYMBOLS	GENERAL TOLERANCES (UNLESS SPECIFIED)		DIMENSION STYLE	SCALE	DESIGN UNITS	THIRD ANGLE PROJECTION		
			$F_A=0$	mm	INCH	MM ONLY	2:1	METRIC	⊙ □		
			$F_C=0$	4 PLACES ± --- ± ---		DRAWN BY	DATE	TITLE			
			$F_B=0$	3 PLACES ± --- ± ---		GLL1	2011/12/12	SERIAL ATA DOCKING CONNECTOR TOP MOUNT TYPE			
			ANGULAR ± 3 °	2 PLACES ± 0.25 ± ---		CHECKED BY	DATE	MOLEX MOLEX INCORPORATED			
				1 PLACE ± 0.25 ± ---		APPROVED BY	DATE	DOCUMENT NO.			
				DRAFT WHERE APPLICABLE MUST REMAIN WITHIN DIMENSIONS		XJSONG	2011/12/12	SD-47018-001			
				SEE SHEET 2		MATERIAL NO.	DOCUMENT NO.	SHEET NO.			
				SIZE A3		THIS DRAWING CONTAINS INFORMATION THAT IS PROPRIETARY TO MOLEX INCORPORATED AND SHOULD NOT BE USED WITHOUT WRITTEN PERMISSION					
						1 OF 2					



RECOMMENDED P.C.B LAYOUT (COMPONENT SIDE)

NOTES:

1. RECOMMENDED P.C.B THICKNESS: 1.60+/-0.05.
- △ CONNECTOR PROFILE, ALL THE TRACE SHOULD BE AVOIDED THIS AREA.



PRODUCT	CONTACT PLATING SPEC	DIM'A'	DIM'B'	DIM'C'	DIM'D'	PACKAGE	REMARK
47018-2100	NOTES 2 (A) OF SHEET 1						PURE TIN
47018-2101	NOTES 2 (B) OF SHEET 1	2.55	4.30	9.65	3.65	TAPE REEL	(LIGHT TIN)
47018-2102	NOTES 2 (C) OF SHEET 1						WITH CAP
47018-4000	NOTES 2 (A) OF SHEET 1						PURE TIN
47018-4001	NOTES 2 (B) OF SHEET 1	3.40	5.15	10.50	4.50	TAPE REEL	(LIGHT TIN)
47018-4002	NOTES 2 (C) OF SHEET 1						WITH CAP
47018-2010	NOTES 2 (A) OF SHEET 1						PURE TIN
47018-2011	NOTES 2 (B) OF SHEET 1	2.55	4.30	9.65	3.65	TRAY	(MATTE TIN)
47018-2012	NOTES 2 (C) OF SHEET 1						
47018-2000	NOTES 2 (A) OF SHEET 1						PURE TIN
47018-2001	NOTES 2 (B) OF SHEET 1	2.55	4.30	9.65	3.65	TRAY	(LIGHT TIN)
47018-2002	NOTES 2 (C) OF SHEET 1						

REVISED EC NO: SH2016-0027 DRW: GLL1 CHKD: APPR: AYIN	2015/12/08 2016/01/18	DESCRIPTION REV	QUALITY SYMBOLS	GENERAL TOLERANCES (UNLESS SPECIFIED)	DIMENSION STYLE	SCALE	DESIGN UNITS	THIRD ANGLE PROJECTION															
			$\nabla = 0$ $\nabla = 0$ $\nabla = 0$	<table border="1"> <tr> <th></th> <th>mm</th> <th>INCH</th> </tr> <tr> <td>4 PLACES</td> <td>± ---</td> <td>± ---</td> </tr> <tr> <td>3 PLACES</td> <td>± ---</td> <td>± ---</td> </tr> <tr> <td>2 PLACES</td> <td>± 0.25</td> <td>± ---</td> </tr> <tr> <td>1 PLACE</td> <td>± 0.25</td> <td>± ---</td> </tr> </table>		mm	INCH	4 PLACES	± ---	± ---	3 PLACES	± ---	± ---	2 PLACES	± 0.25	± ---	1 PLACE	± 0.25	± ---	MM ONLY	1:1	METRIC	
				mm	INCH																		
			4 PLACES	± ---	± ---																		
3 PLACES	± ---	± ---																					
2 PLACES	± 0.25	± ---																					
1 PLACE	± 0.25	± ---																					
	ANGULAR ± 3°	DRAWN BY: GLL1 DATE: 2011/12/12 CHECKED BY: _____ DATE: _____ APPROVED BY: XJSONG DATE: 2011/12/12 MATERIAL NO.: SEE TABLE DOCUMENT NO.: SD-47018-001	TITLE: SERIAL ATA DOCKING CONNECTOR TOP MOUNT TYPE MOLEX INCORPORATED SHEET NO.: 2 OF 2																				
			DRAFT WHERE APPLICABLE MUST REMAIN WITHIN DIMENSIONS	SIZE: A3 THIS DRAWING CONTAINS INFORMATION THAT IS PROPRIETARY TO MOLEX INCORPORATED AND SHOULD NOT BE USED WITHOUT WRITTEN PERMISSION																			