



Chipsmall Limited consists of a professional team with an average of over 10 year of expertise in the distribution of electronic components. Based in Hongkong, we have already established firm and mutual-benefit business relationships with customers from,Europe,America and south Asia,supplying obsolete and hard-to-find components to meet their specific needs.

With the principle of “Quality Parts,Customers Priority,Honest Operation,and Considerate Service”,our business mainly focus on the distribution of electronic components. Line cards we deal with include Microchip,ALPS,ROHM,Xilinx,Pulse,ON,Everlight and Freescale. Main products comprise IC,Modules,Potentiometer,IC Socket,Relay,Connector.Our parts cover such applications as commercial,industrial, and automotives areas.

We are looking forward to setting up business relationship with you and hope to provide you with the best service and solution. Let us make a better world for our industry!



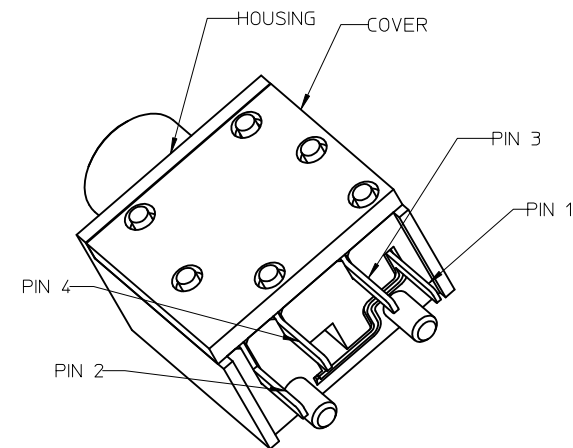
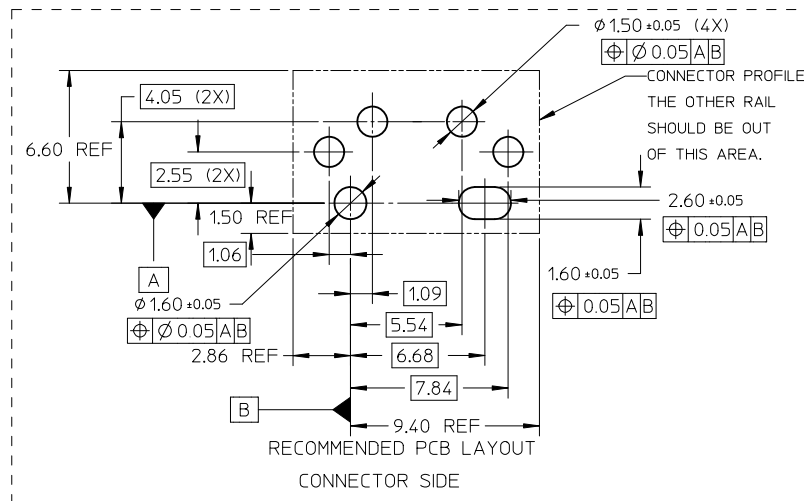
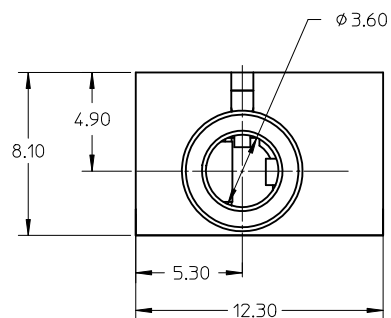
Contact us

Tel: +86-755-8981 8866 Fax: +86-755-8427 6832

Email & Skype: info@chipsmall.com Web: www.chipsmall.com

Address: A1208, Overseas Decoration Building, #122 Zhenhua RD., Futian, Shenzhen, China





NOTE:

1.MATERIAL:

PART TO BE COMPLIANT WITH RELOW PROCEWW AT 260°C.

HOUSING & COVER: NYLON, GLASS FIBER FILLED,

UL94V-0, COLOR: BLACK

TERMINAL: PIN 1 : PHOSPHOR BRONZE

PIN 2 : PHOSPHOR BRONZE

PIN 3 : PHOSPHOR BRONZE

PIN 4 : BRASS

2.FINISH:

TERMINAL:

CONTACT AREA: GOLD, THICKNESS=0.75 MICRON MIN.

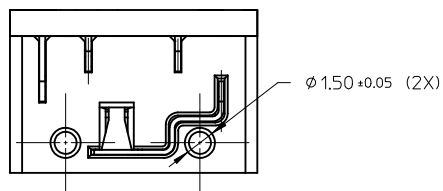
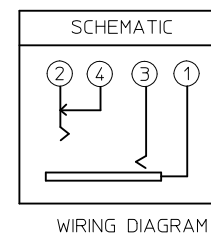
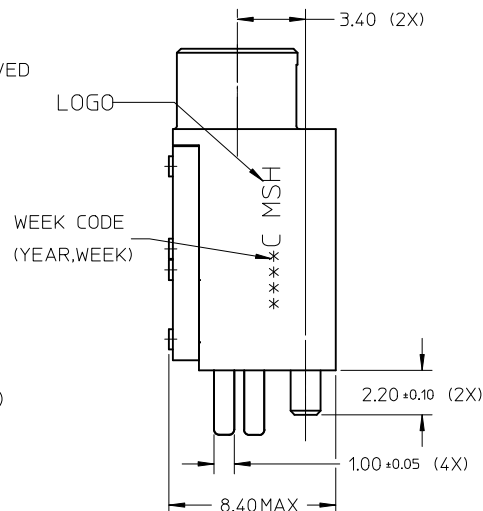
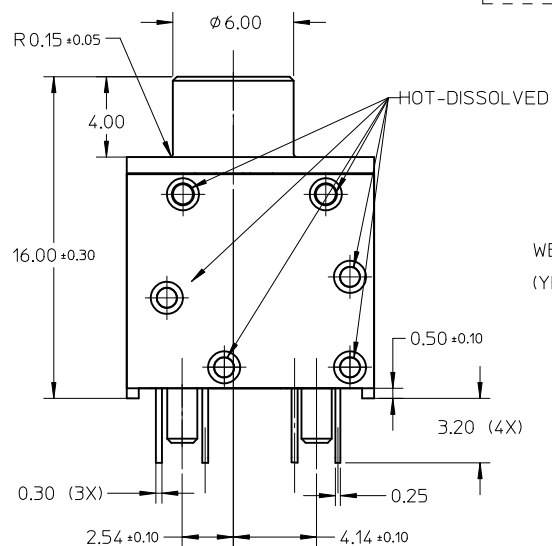
SOLDER TAIL: TIN, THICKNESS=2 MICRON MIN.

UNDERPLATE: NICKEL, THICKNESS=2 MICRON MIN

3.RECOMMENDED PCB THICKNESS: 1.60±0.05mm

4.PRODUCT SPECIFICATION REFER TO PS-47257-001

5.PACKAGING SPECIFICATION REFER TO PK-47257-001



REVISE		QUALITY SYMBOLS		GENERAL TOLERANCES (UNLESS SPECIFIED)		DIMENSION STYLE		SCALE		DESIGN UNITS		THIRD ANGLE PROJECTION	
EC NO:	SH2011-0108	2010/10/26	2010/11/01	mm	INCH	MM ONLY	DATE	1:1	METRIC	METRIC	DATE	DATE	DATE
DRW:NYANG05	2010/10/26	2010/11/01	2010/11/01	4 PLACES	± ---	± ---	MZCHEN	2005/04/26					
CHKD:				3 PLACES	± ---	± ---	CHECKED BY	DATE					
APPR:RZHANG				2 PLACES	± 0.25	± ---	GRMA	2005/05/30					
				1 PLACE	± 0.25	± ---	APPROVED BY	DATE					
				ANGULAR ±1/2°		RZHANG	2010/11/01						
				DRAFT WHERE APPLICABLE MUST REMAIN WITHIN DIMENSIONS		MATERIAL NO.		DOCUMENT NO.		SHEET NO.			
						47257-0001		SD-47257-001		1 OF 1			
						THIS DRAWING CONTAINS INFORMATION THAT IS PROPRIETARY TO MOLEX INCORPORATED AND SHOULD NOT BE USED WITHOUT WRITTEN PERMISSION							